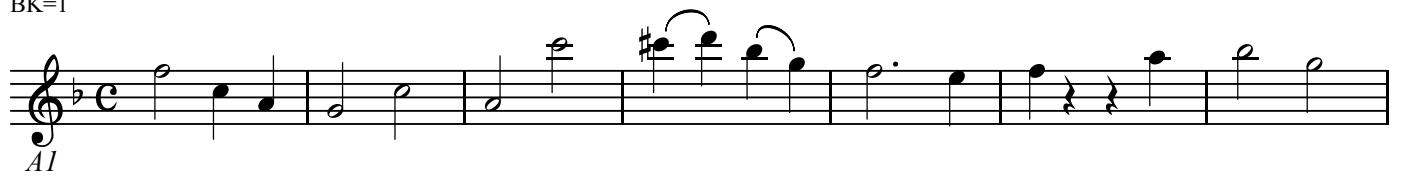


A1

三声のカノン「なめろ、おれの尻を」 KV233

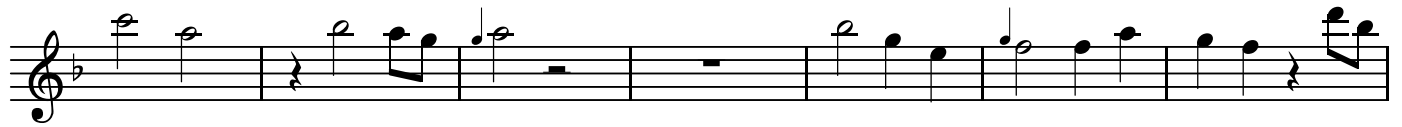
W.A.Mozart

BK=1



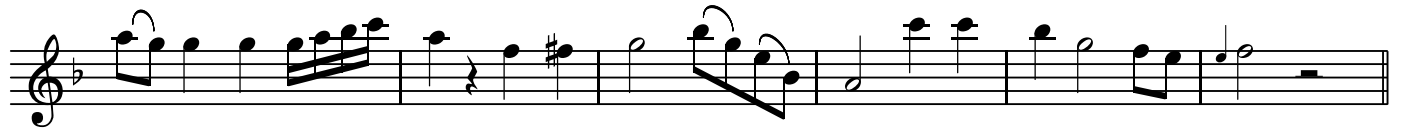
Musical staff for BK=1, starting with a treble clef, a key signature of one flat (B-flat), and a common time signature (C). The staff contains a sequence of notes and rests, including a dynamic marking of *Al* below the first few notes.

BK=2



Musical staff for BK=2, continuing the sequence of notes and rests from the previous staff.

BK=3



Musical staff for BK=3, featuring a more complex melodic line with slurs and a dynamic marking of *Al*.

BK=4



Musical staff for BK=4, starting with a repeat sign (double bar line with dots) and a dynamic marking of *Al*.

BK=5



Musical staff for BK=5, continuing the melodic sequence with a dynamic marking of *Al*.

BK=6



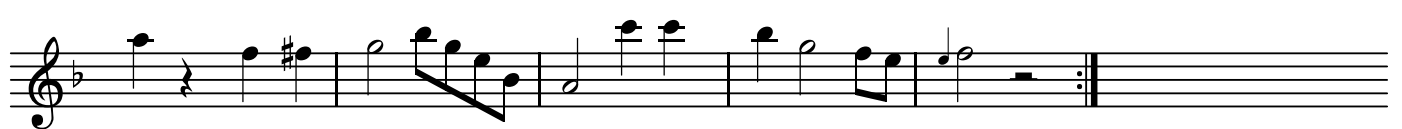
Musical staff for BK=6, featuring a melodic line with slurs and a dynamic marking of *Al*.

BK=7



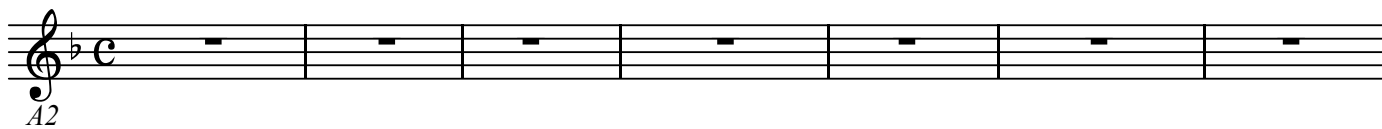
Musical staff for BK=7, continuing the melodic sequence with a dynamic marking of *Al*.

BK=8



Musical staff for BK=8, concluding the sequence with a repeat sign (double bar line with dots) and a dynamic marking of *Al*.

BK=1



BK=2



BK=3



BK=4



BK=5



BK=6



BK=7



BK=8



BK=1



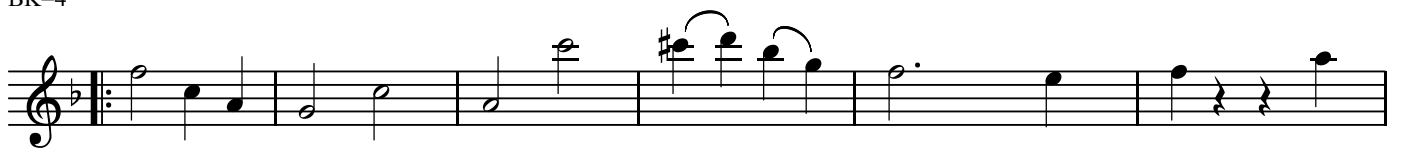
BK=2



BK=3



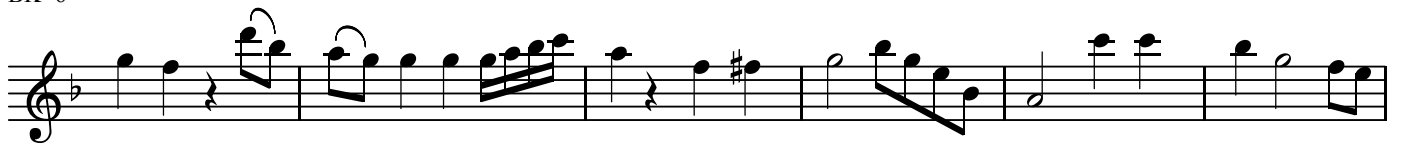
BK=4



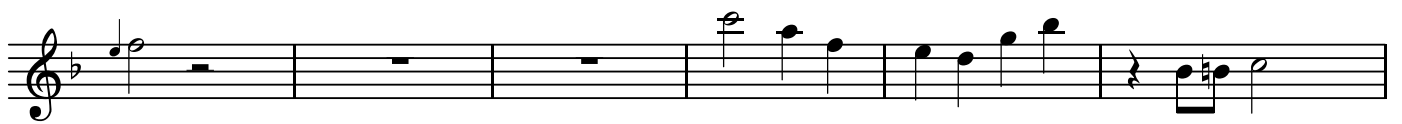
BK=5



BK=6



BK=7



BK=8

