

六声のカノン「おれの尻をなめろ」 KV231

W.A.Mozart

BK=1

Musical staff for BK=1, starting with a treble clef and a key signature of one flat (B-flat). The staff contains a sequence of notes: a whole rest, followed by a whole note B-flat, a whole note A, a whole note G, a whole note F, a whole note E, a whole note D, a whole note C, and a whole note B-flat. A slur is placed over the final two notes, B-flat and A.

BK=2

Musical staff for BK=2, starting with a treble clef and a key signature of one flat. The staff contains a sequence of notes: a whole note B-flat, a whole note A, a whole note G, a whole note F, a whole note E, a whole note D, a whole note C, and a whole note B-flat. A slur is placed over the first four notes, B-flat, A, G, and F.

BK=3

Musical staff for BK=3, starting with a treble clef and a key signature of one flat. The staff contains a sequence of notes: a whole note B-flat, a whole note A, a whole note G, a whole note F, a whole note E, a whole note D, a whole note C, and a whole note B-flat. A slur is placed over the first four notes, B-flat, A, G, and F.

BK=4

Musical staff for BK=4, starting with a treble clef and a key signature of one flat. The staff contains a sequence of notes: a whole note B-flat, a whole note A, a whole note G, a whole note F, a whole note E, a whole note D, a whole note C, and a whole note B-flat. A slur is placed over the first four notes, B-flat, A, G, and F.

BK=5

Musical staff for BK=5, starting with a treble clef and a key signature of one flat. The staff contains a sequence of notes: a whole note B-flat, a whole note A, a whole note G, a whole note F, a whole note E, a whole note D, a whole note C, and a whole note B-flat. A slur is placed over the first four notes, B-flat, A, G, and F.

BK=6

Musical staff for BK=6, starting with a treble clef and a key signature of one flat. The staff contains a sequence of notes: a whole note B-flat, a whole note A, a whole note G, a whole note F, a whole note E, a whole note D, a whole note C, and a whole note B-flat. A slur is placed over the first four notes, B-flat, A, G, and F.

BK=7

Musical staff for BK=7, starting with a treble clef and a key signature of one flat. The staff contains a sequence of notes: a whole note B-flat, a whole note A, a whole note G, a whole note F, a whole note E, a whole note D, a whole note C, and a whole note B-flat. A slur is placed over the first four notes, B-flat, A, G, and F.

BK=8

Musical staff for BK=8, starting with a treble clef and a key signature of one flat. The staff contains a sequence of notes: a whole note B-flat, a whole note A, a whole note G, a whole note F, a whole note E, a whole note D, a whole note C, and a whole note B-flat. A slur is placed over the first four notes, B-flat, A, G, and F.

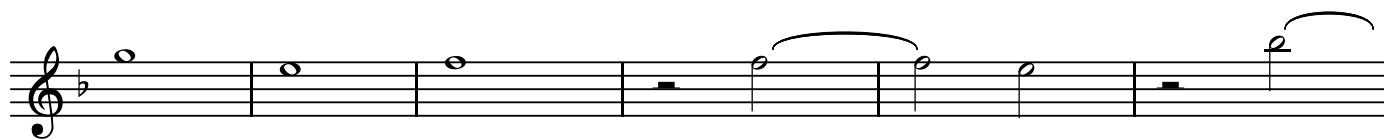
六声のカノン「おれの尻をなめろ」 KV231

W.A.Mozart

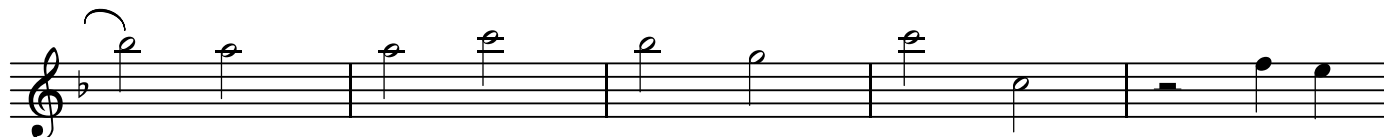
BK=1



A3
BK=2



BK=3



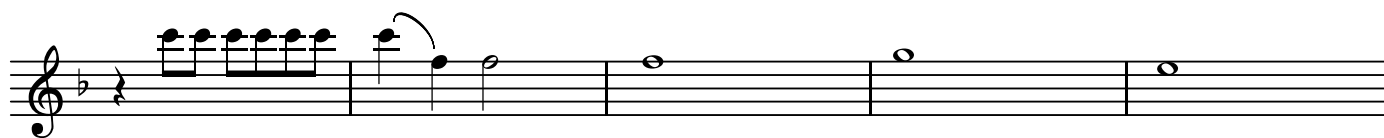
BK=4



BK=5



BK=6



BK=7



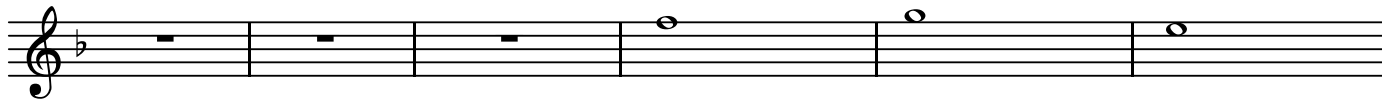
BK=8



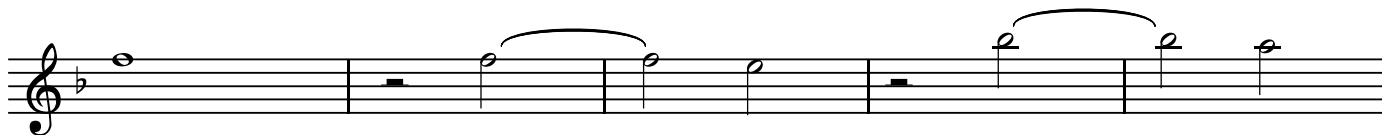
BK=1



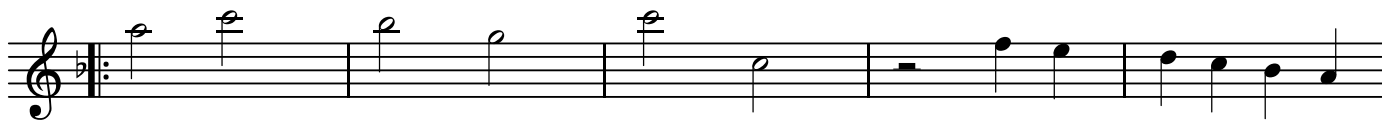
A4
BK=2



BK=3



BK=4



BK=5



BK=6



BK=7



BK=8



BK=1



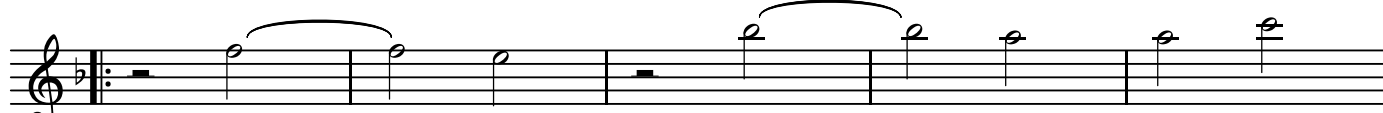
A5
BK=2



BK=3



BK=4



BK=5



BK=6



BK=7



BK=8



BK=1



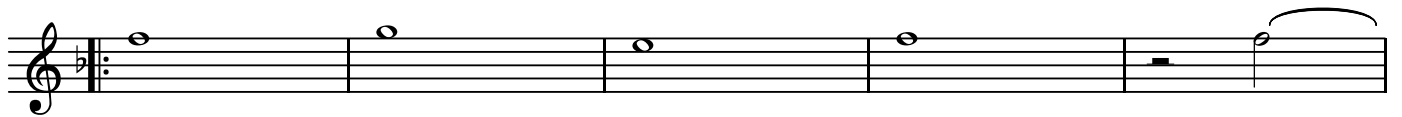
BK=2



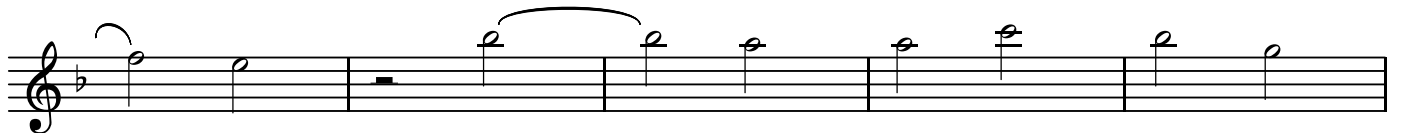
BK=3



BK=4



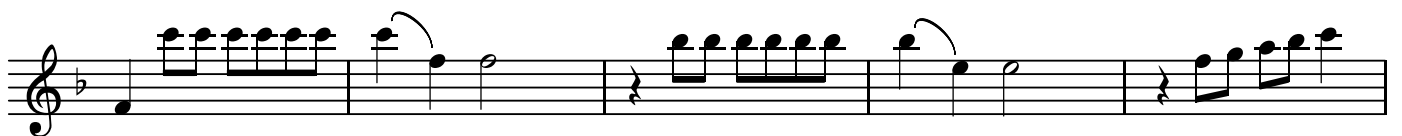
BK=5



BK=6



BK=7



BK=8

