

Sn

6.

BK=1

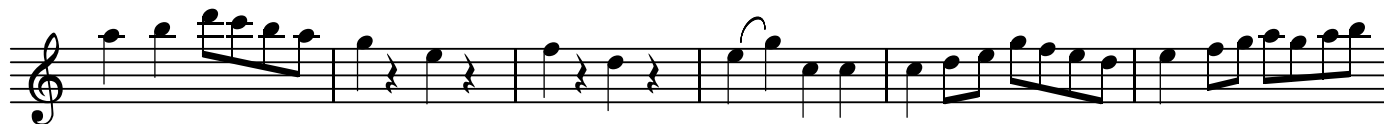


sn

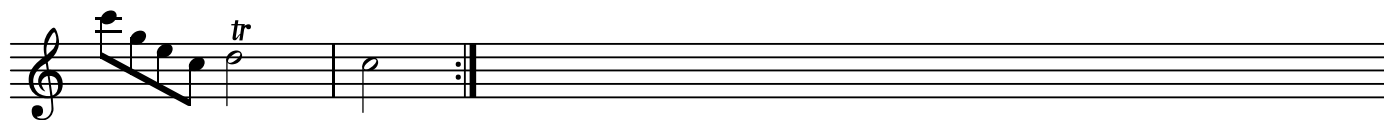
BK=2



BK=3



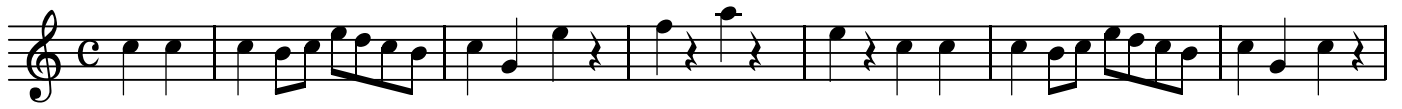
BK=4



S

6.

BK=1



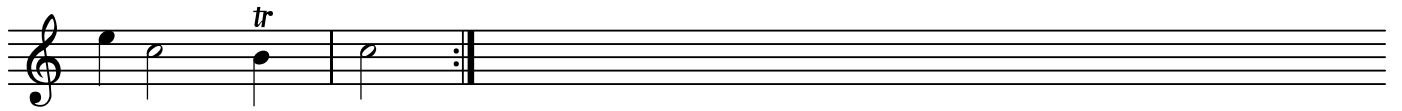
S
BK=2



BK=3



BK=4



BK=1

Musical staff for BK=1, starting with a treble clef and a common time signature (C). The staff contains seven measures of music. The first measure has two quarter notes. The second measure has a quarter note followed by a quarter rest. The third measure has a quarter note followed by a quarter rest. The fourth measure has a quarter note followed by a quarter rest. The fifth measure has a quarter note followed by a quarter rest. The sixth measure has a quarter note followed by a quarter rest. The seventh measure has a quarter note followed by a quarter rest. A dynamic marking 'A' is placed below the first measure.

BK=2

Musical staff for BK=2, starting with a treble clef. The staff contains seven measures of music. The first measure has a quarter note followed by a quarter rest. The second measure has a quarter note followed by a quarter rest. The third measure has a quarter note followed by a quarter rest. The fourth measure has a quarter rest. The fifth measure has a half note. The sixth measure has a half note. The seventh measure has a half note. A slur is placed over the fifth, sixth, and seventh measures.

BK=3

Musical staff for BK=3, starting with a treble clef. The staff contains seven measures of music. The first measure has a quarter note followed by a quarter rest. The second measure has a quarter note followed by a quarter rest. The third measure has a quarter note followed by a quarter rest. The fourth measure has a quarter note followed by a quarter rest. The fifth measure has a quarter note followed by a quarter rest. The sixth measure has a quarter note followed by a quarter rest. The seventh measure has a half note. A slur is placed over the seventh measure.

BK=4

Musical staff for BK=4, starting with a treble clef. The staff contains two measures of music. The first measure has a quarter note followed by a quarter note followed by a quarter note. The second measure has a quarter note followed by a quarter rest. A trill marking 'tr' is placed above the second quarter note in the first measure. A repeat sign is placed at the end of the second measure.

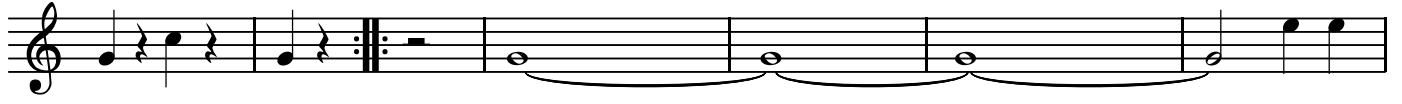
T1

6.

BK=1



T1
BK=2



BK=3



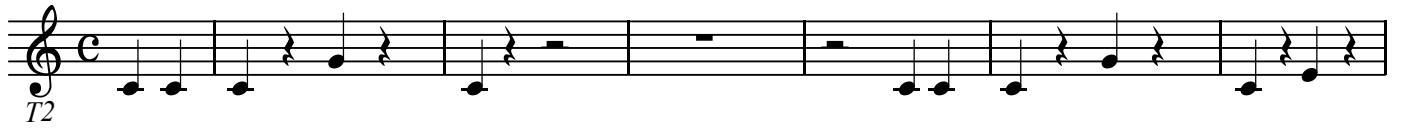
BK=4



T2

6.

BK=1



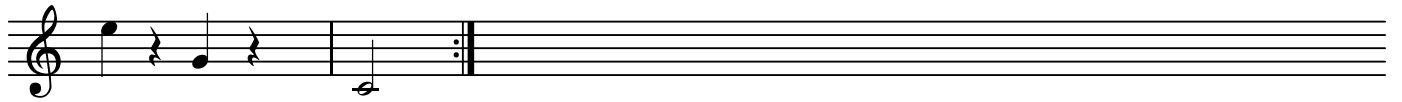
BK=2



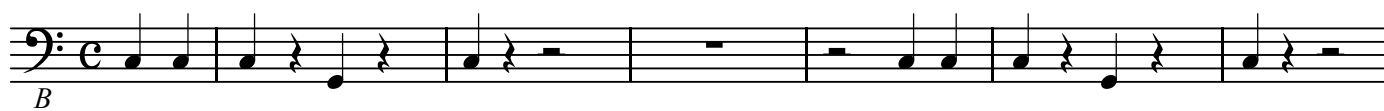
BK=3



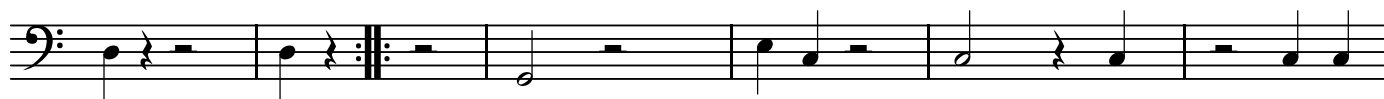
BK=4



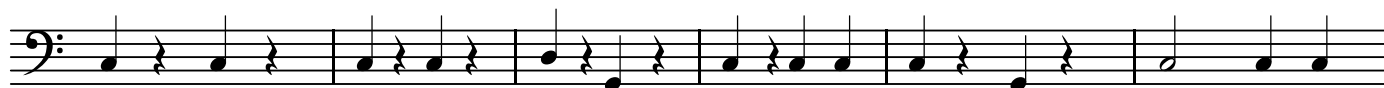
BK=1



BK=2



BK=3



BK=4

