

Sn

2. Allegro

BK=1

Musical staff for BK=1, starting with a treble clef and a 2/4 time signature. The notation includes a series of eighth and quarter notes with slurs, followed by a whole rest.

BK=2

Musical staff for BK=2, featuring a sequence of eighth notes with slurs, followed by a whole rest.

BK=3

Musical staff for BK=3, containing eighth notes with slurs, a repeat sign, and a whole rest.

BK=4

Musical staff for BK=4, showing eighth notes with slurs, a whole rest, and a final eighth note.

BK=5

Musical staff for BK=5, featuring eighth notes with slurs, a whole rest, and a final eighth note.

BK=6

Musical staff for BK=6, containing eighth notes with slurs, a whole rest, and a final eighth note.

S

2. Allegro

BK=1

Musical staff for BK=1, starting with a treble clef, a 2/4 time signature, and a dynamic marking of *S*. The staff contains a sequence of notes and rests, including a half note, a quarter note, and several eighth notes.

BK=2

Musical staff for BK=2, continuing the melodic line with eighth and quarter notes.

BK=3

Musical staff for BK=3, featuring a repeat sign and eighth notes.

BK=4

Musical staff for BK=4, including a whole rest and eighth notes.

BK=5

Musical staff for BK=5, featuring eighth notes and a quarter note.

BK=6

Musical staff for BK=6, ending with a double bar line and repeat dots.



T1

2. Allegro

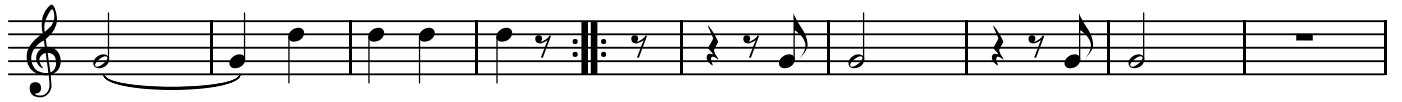
BK=1



BK=2



BK=3



BK=4



BK=5



BK=6



T2

2. Allegro

BK=1

Musical staff for BK=1, starting with a treble clef, a 2/4 time signature, and a key signature of one flat. The staff contains a series of rests followed by a sequence of eighth notes: G4, A4, B4, C5, B4, A4, G4.

T2

Musical staff for BK=2, starting with a treble clef. The staff contains a sequence of eighth notes: G4, A4, B4, C5, B4, A4, G4, followed by a series of eighth notes: G4, A4, B4, C5, B4, A4, G4, F4, E4, D4, C4.

BK=3

Musical staff for BK=3, starting with a treble clef. The staff contains a sequence of eighth notes: G4, A4, B4, C5, B4, A4, G4, followed by a repeat sign and a sequence of eighth notes: G4, A4, B4, C5, B4, A4, G4, F4, E4, D4, C4.

BK=4

Musical staff for BK=4, starting with a treble clef. The staff contains a sequence of eighth notes: G4, A4, B4, C5, B4, A4, G4, followed by a series of eighth notes: G4, A4, B4, C5, B4, A4, G4, F4, E4, D4, C4.

BK=5

Musical staff for BK=5, starting with a treble clef. The staff contains a series of rests followed by a sequence of eighth notes: G4, A4, B4, C5, B4, A4, G4, F4, E4, D4, C4.

BK=6

Musical staff for BK=6, starting with a treble clef. The staff contains a sequence of eighth notes: G4, A4, B4, C5, B4, A4, G4, followed by a series of eighth notes: G4, A4, B4, C5, B4, A4, G4, F4, E4, D4, C4, ending with a double bar line and repeat sign.

