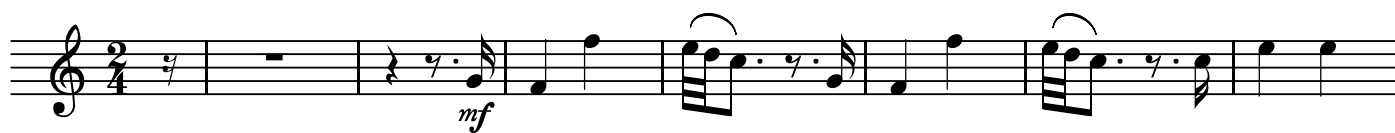


S1

5. Allegro

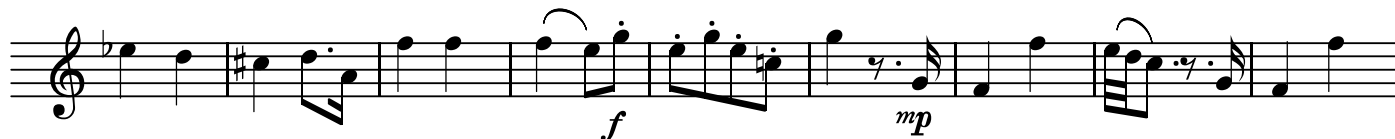
BK=1



BK=2



BK=3



BK=4



BK=1



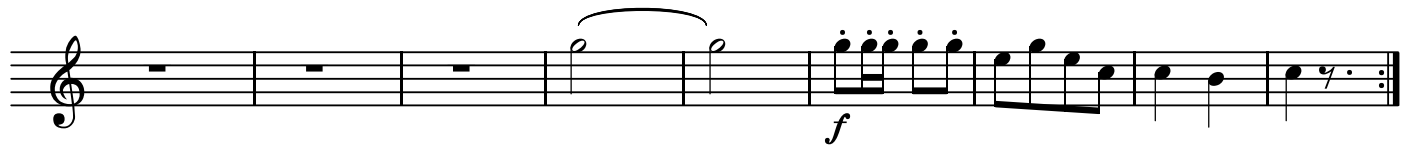
BK=2



BK=3



BK=4







T2

5. Allegro

BK=1

Musical staff for BK=1, 2/4 time signature, starting with a treble clef and a 7-measure rest. The melody begins in measure 4 with a quarter note G4, followed by an eighth note G4 and a quarter note F4. This pattern repeats in measure 6. The dynamic marking *mf* is placed below the first G4.

BK=2

Musical staff for BK=2, 2/4 time signature, starting with a treble clef and a 7-measure rest. The melody begins in measure 4 with a quarter note G4, followed by an eighth note G4 and a quarter note F4. This pattern repeats in measure 6. The dynamic marking *mf* is placed below the first G4.

BK=3

Musical staff for BK=3, 2/4 time signature, starting with a treble clef and a 7-measure rest. The melody begins in measure 4 with a quarter note G4, followed by an eighth note G4 and a quarter note F4. This pattern repeats in measure 6. The dynamic marking *mp* is placed below the first G4.

BK=4

Musical staff for BK=4, 2/4 time signature, starting with a treble clef and a 7-measure rest. The melody begins in measure 4 with a quarter note G4, followed by an eighth note G4 and a quarter note F4. This pattern repeats in measure 6. The dynamic marking *mp* is placed below the first G4.



