

S1

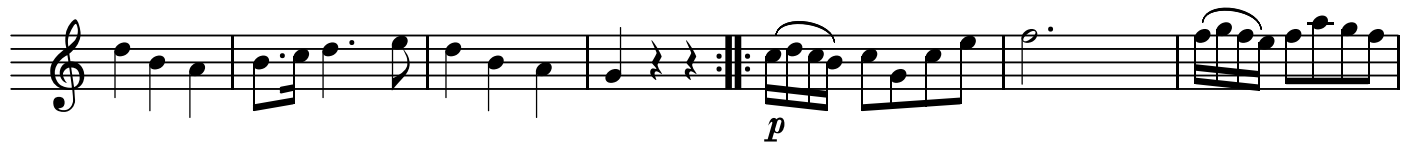
4.Menuetto

BK=1



Musical notation for BK=1, starting with a treble clef and a 3/4 time signature. The piece begins with a mezzo-piano (*mp*) dynamic. The first measure contains a quarter note G4, followed by eighth notes A4, B4, and C5. The second measure has eighth notes D5, E5, and F5. The third measure features a quarter note G5, followed by eighth notes F5, E5, and D5. The fourth measure has a quarter note C5, followed by eighth notes B4, A4, and G4. The fifth measure contains a quarter note F4, followed by eighth notes E4, D4, and C4. The sixth measure has a quarter note B3, followed by eighth notes A3, G3, and F3. The seventh measure contains a quarter note E3, followed by eighth notes D3, C3, and B2. The eighth measure has a quarter note A2, followed by eighth notes G2, F2, and E2. The ninth measure contains a quarter note D2, followed by eighth notes C2, B1, and A1. The tenth measure has a quarter note G1, followed by eighth notes F1, E1, and D1. The eleventh measure contains a quarter note C2, followed by eighth notes B1, A1, and G1. The twelfth measure has a quarter note B1, followed by eighth notes A1, G1, and F1. The thirteenth measure contains a quarter note A1, followed by eighth notes G1, F1, and E1. The fourteenth measure has a quarter note G1, followed by eighth notes F1, E1, and D1. The fifteenth measure contains a quarter note F1, followed by eighth notes E1, D1, and C1. The sixteenth measure has a quarter note E1, followed by eighth notes D1, C1, and B1. The seventeenth measure contains a quarter note D1, followed by eighth notes C1, B1, and A1. The eighteenth measure has a quarter note C1, followed by eighth notes B1, A1, and G1. The nineteenth measure contains a quarter note B1, followed by eighth notes A1, G1, and F1. The twentieth measure has a quarter note A1, followed by eighth notes G1, F1, and E1. The piece concludes with a double bar line.

BK=2



Musical notation for BK=2, starting with a treble clef. The piece begins with a piano (*p*) dynamic. The first measure contains a quarter note G4, followed by eighth notes A4, B4, and C5. The second measure has eighth notes D5, E5, and F5. The third measure features a quarter note G5, followed by eighth notes F5, E5, and D5. The fourth measure has a quarter note C5, followed by eighth notes B4, A4, and G4. The fifth measure contains a quarter note F4, followed by eighth notes E4, D4, and C4. The sixth measure has a quarter note B3, followed by eighth notes A3, G3, and F3. The seventh measure contains a quarter note E3, followed by eighth notes D3, C3, and B2. The eighth measure has a quarter note A2, followed by eighth notes G2, F2, and E2. The ninth measure contains a quarter note D2, followed by eighth notes C2, B1, and A1. The tenth measure has a quarter note G1, followed by eighth notes F1, E1, and D1. The eleventh measure contains a quarter note C2, followed by eighth notes B1, A1, and G1. The twelfth measure has a quarter note B1, followed by eighth notes A1, G1, and F1. The thirteenth measure contains a quarter note A1, followed by eighth notes G1, F1, and E1. The fourteenth measure has a quarter note G1, followed by eighth notes F1, E1, and D1. The fifteenth measure contains a quarter note F1, followed by eighth notes E1, D1, and C1. The sixteenth measure has a quarter note E1, followed by eighth notes D1, C1, and B1. The seventeenth measure contains a quarter note D1, followed by eighth notes C1, B1, and A1. The eighteenth measure has a quarter note C1, followed by eighth notes B1, A1, and G1. The nineteenth measure contains a quarter note B1, followed by eighth notes A1, G1, and F1. The twentieth measure has a quarter note A1, followed by eighth notes G1, F1, and E1. The piece concludes with a double bar line.

BK=3



Musical notation for BK=3, starting with a treble clef. The piece begins with a forte (*f*) dynamic. The first measure contains a quarter note G4, followed by eighth notes A4, B4, and C5. The second measure has eighth notes D5, E5, and F5. The third measure features a quarter note G5, followed by eighth notes F5, E5, and D5. The fourth measure has a quarter note C5, followed by eighth notes B4, A4, and G4. The fifth measure contains a quarter note F4, followed by eighth notes E4, D4, and C4. The sixth measure has a quarter note B3, followed by eighth notes A3, G3, and F3. The seventh measure contains a quarter note E3, followed by eighth notes D3, C3, and B2. The eighth measure has a quarter note A2, followed by eighth notes G2, F2, and E2. The ninth measure contains a quarter note D2, followed by eighth notes C2, B1, and A1. The tenth measure has a quarter note G1, followed by eighth notes F1, E1, and D1. The eleventh measure contains a quarter note C2, followed by eighth notes B1, A1, and G1. The twelfth measure has a quarter note B1, followed by eighth notes A1, G1, and F1. The thirteenth measure contains a quarter note A1, followed by eighth notes G1, F1, and E1. The fourteenth measure has a quarter note G1, followed by eighth notes F1, E1, and D1. The fifteenth measure contains a quarter note F1, followed by eighth notes E1, D1, and C1. The sixteenth measure has a quarter note E1, followed by eighth notes D1, C1, and B1. The seventeenth measure contains a quarter note D1, followed by eighth notes C1, B1, and A1. The eighteenth measure has a quarter note C1, followed by eighth notes B1, A1, and G1. The nineteenth measure contains a quarter note B1, followed by eighth notes A1, G1, and F1. The twentieth measure has a quarter note A1, followed by eighth notes G1, F1, and E1. The piece concludes with a double bar line.

S2

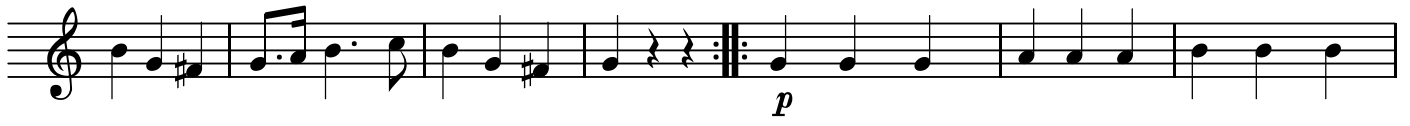
4. Menuetto

BK=1



Musical notation for BK=1, starting with a treble clef and a 3/4 time signature. The piece begins with a mezzo-piano (*mp*) dynamic. The first four measures feature a rhythmic pattern of eighth notes with quarter rests, and the fifth measure contains a dotted quarter note. The sixth and seventh measures are whole rests. The eighth measure contains a quarter note, and the ninth measure contains a dotted quarter note.

BK=2



Musical notation for BK=2, starting with a treble clef. The first four measures contain eighth notes with quarter rests, followed by a repeat sign. The fifth measure contains a dotted quarter note, and the sixth measure contains a quarter note. The seventh measure contains a dotted quarter note, and the eighth measure contains a quarter note. The piece concludes with a piano (*p*) dynamic in the ninth measure, which contains a dotted quarter note.

BK=3

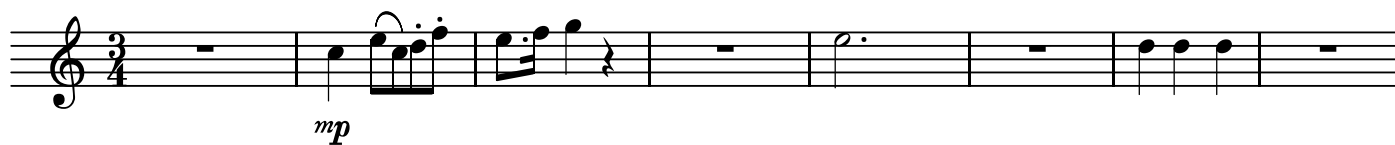


Musical notation for BK=3, starting with a treble clef. The first two measures are whole rests. The third measure contains a dotted quarter note. The fourth measure contains a quarter note. The fifth measure contains a dotted quarter note. The sixth measure contains a quarter note. The seventh measure contains a dotted quarter note. The eighth measure contains a quarter note. The piece concludes with a forte (*f*) dynamic in the ninth measure, which contains a dotted quarter note.

A

4. Menuetto

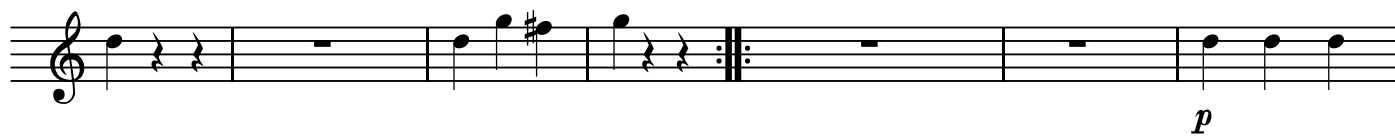
BK=1



Musical staff for BK=1, treble clef, 3/4 time signature. The staff contains a sequence of notes: a whole rest, a quarter note G4, a quarter note A4, a quarter note B4, a quarter note C5, a quarter note B4, a quarter note A4, a quarter note G4, a whole rest, a half note G4, a whole rest, a whole rest, a quarter note G4, a quarter note A4, a quarter note B4, a whole rest.

mp

BK=2



Musical staff for BK=2, treble clef. The staff contains a sequence of notes: a quarter note G4, a quarter note A4, a quarter note B4, a whole rest, a whole rest, a quarter note G4, a quarter note A4, a quarter note B4, a quarter note C5, a quarter note B4, a quarter note A4, a quarter note G4, a double bar line with repeat dots, a whole rest, a whole rest, a quarter note G4, a quarter note A4, a quarter note B4.

p

BK=3



Musical staff for BK=3, treble clef. The staff contains a sequence of notes: a quarter note G4, a quarter note A4, a quarter note B4, a whole rest, a whole rest, a whole rest, a quarter note G4, a quarter note A4, a quarter note B4, a quarter note C5, a quarter note B4, a quarter note A4, a quarter note G4, a quarter note F4, a quarter note E4, a quarter note D4, a quarter note C4, a double bar line with repeat dots.

f

T1

4.Menuetto

BK=1

Musical notation for BK=1, starting with a treble clef, a 3/4 time signature, and a mezzo-piano (*mp*) dynamic marking. The melody consists of a sequence of eighth notes and quarter notes across eight measures.

BK=2

Musical notation for BK=2, starting with a treble clef. The first two measures contain quarter notes, followed by a whole rest. The third measure contains quarter notes, and the fourth measure contains quarter notes and quarter rests. A repeat sign is present after the fourth measure, followed by a piano (*p*) dynamic marking and a quarter note in the fifth measure, a quarter rest in the sixth measure, and another whole rest in the seventh measure.

BK=3

Musical notation for BK=3, starting with a treble clef. The first six measures contain quarter notes. The seventh measure contains a quarter note and a quarter rest. The eighth measure contains a quarter note and a quarter rest. The ninth measure contains a quarter note and a quarter rest. The tenth measure contains a quarter note and a quarter rest. The piece concludes with a double bar line and repeat dots.

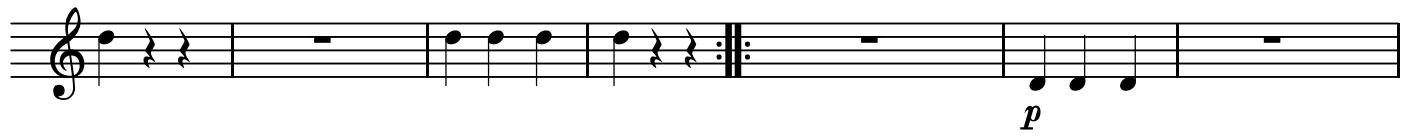
T2

4. Menuetto

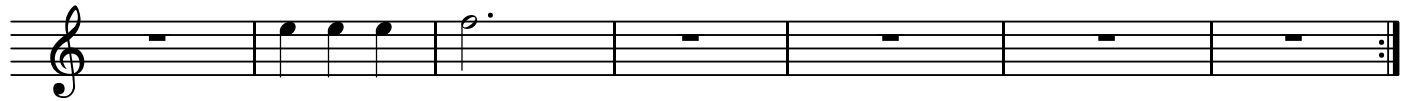
BK=1



BK=2



BK=3



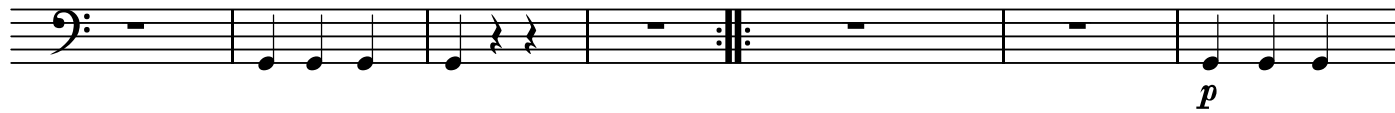
B

4. Menuetto

BK=1



BK=2



BK=3



GB

4. Menuetto

BK=1



Musical staff for BK=1, bass clef, 3/4 time signature. The staff contains a sequence of eighth notes with stems up, followed by a whole rest, and then another sequence of eighth notes with stems up. The dynamic marking *mp* is placed below the first measure.

BK=2



Musical staff for BK=2, bass clef. The staff contains a sequence of eighth notes with stems up, followed by a double bar line with repeat dots, and then three whole rests.

BK=3



Musical staff for BK=3, bass clef. The staff contains a whole rest, followed by a sequence of eighth notes with stems up, and then a sequence of eighth notes with stems up. The dynamic marking *f* is placed below the first measure of the second sequence.