

3. Menuetto

BK=1

Musical staff for BK=1, treble clef, key signature of one sharp (F#), 3/4 time signature. The staff contains a sequence of notes starting with a whole rest, followed by quarter notes G4, A4, B4, and C5. Dynamics include *p* (piano) and *fp* (fortissimo piano). The staff ends with a double bar line.

BK=2

Musical staff for BK=2, treble clef, key signature of one sharp (F#), 3/4 time signature. The staff contains a sequence of notes starting with a quarter note G4, followed by quarter notes A4, B4, and C5. Dynamics include *f* (forte). The staff ends with a double bar line.

BK=3

Musical staff for BK=3, treble clef, key signature of one sharp (F#), 3/4 time signature. The staff contains a sequence of notes starting with a trill (tr) on G4, followed by quarter notes A4, B4, and C5. Dynamics include *p* (piano). The staff ends with a double bar line.

BK=4

Musical staff for BK=4, treble clef, key signature of one sharp (F#), 3/4 time signature. The staff contains a sequence of notes starting with a whole rest, followed by quarter notes G4, A4, B4, and C5. Dynamics include *p* (piano), *fp* (fortissimo piano), and *f* (forte). The staff ends with a double bar line.

BK=5

Musical staff for BK=5, treble clef, key signature of one sharp (F#), 3/4 time signature. The staff contains a sequence of notes starting with a quarter note G4, followed by quarter notes A4, B4, and C5. Dynamics include *p* (piano) and *f* (forte). The staff ends with a double bar line and the word "Fine".

BK=6

Musical staff for BK=6, treble clef, key signature of two flats (Bb, Eb), 3/4 time signature. The staff contains a sequence of whole rests. The word "Trio" is written above the staff. The staff ends with a double bar line.

BK=7

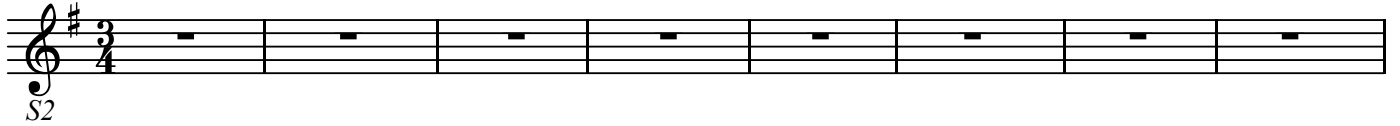
Musical staff for BK=7, treble clef, key signature of two flats (Bb, Eb), 3/4 time signature. The staff contains a sequence of whole rests. The staff ends with a double bar line.

BK=8

Musical staff for BK=8, treble clef, key signature of two flats (Bb, Eb), 3/4 time signature. The staff contains a sequence of whole rests. The staff ends with a double bar line.

## 3. Menuetto

BK=1

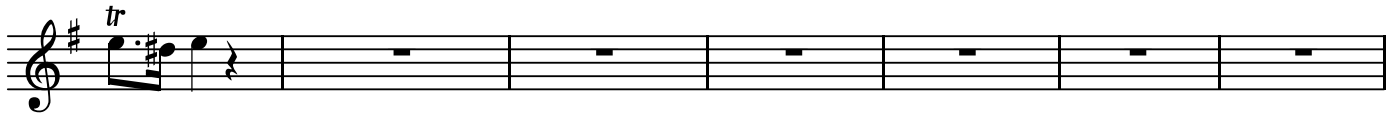


S2

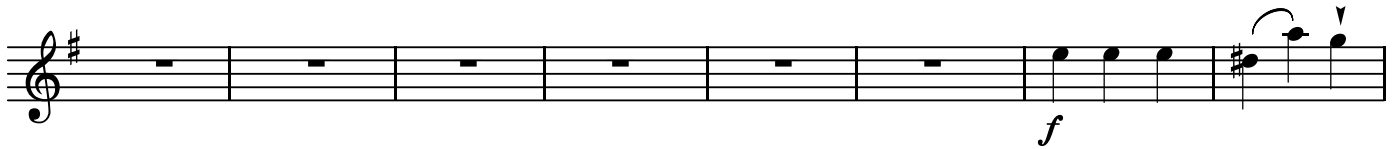
BK=2



BK=3



BK=4



BK=5



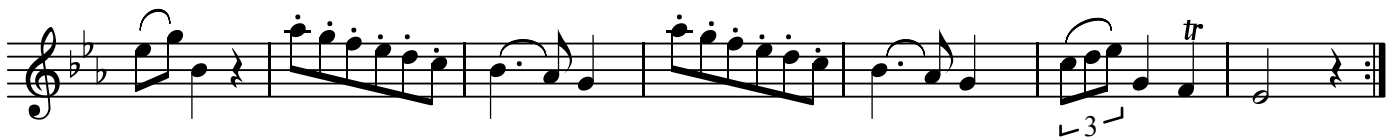
BK=6



BK=7



BK=8



A

3. Menuetto

BK=1

Musical staff BK=1, treble clef, key signature of one sharp (F#), 3/4 time signature. The staff contains a sequence of notes with dynamic markings: *f*, *p*, *fp*, and *fp*. The first measure is marked with a fermata and the letter 'A' below it.

BK=2

Musical staff BK=2, treble clef, key signature of one sharp (F#), 3/4 time signature. The staff contains a sequence of notes with a dynamic marking of *f*. The staff ends with a repeat sign.

BK=3

Musical staff BK=3, treble clef, key signature of one sharp (F#), 3/4 time signature. The staff contains a sequence of notes with dynamic markings: *p* and *f*. The staff begins with a trill (tr) and includes a fermata.

BK=4

Musical staff BK=4, treble clef, key signature of one sharp (F#), 3/4 time signature. The staff contains a sequence of notes with dynamic markings: *p*, *fp*, *fp*, and *f*. The staff ends with a fermata.

BK=5

Musical staff BK=5, treble clef, key signature of one sharp (F#), 3/4 time signature. The staff contains a sequence of notes with dynamic markings: *p* and *f*. The staff ends with a repeat sign and the word 'Fine' below it.

BK=6

Musical staff BK=6, treble clef, key signature of two flats (Bb, Eb), 3/4 time signature. The staff contains a sequence of notes with dynamic markings: *p* and *fp*. The staff ends with a repeat sign.

BK=7

Musical staff BK=7, treble clef, key signature of two flats (Bb, Eb), 3/4 time signature. The staff contains a sequence of notes with a fermata at the beginning and a repeat sign at the end.

BK=8

Musical staff BK=8, treble clef, key signature of two flats (Bb, Eb), 3/4 time signature. The staff contains a sequence of notes with a trill (tr) and a repeat sign at the end.

T

3. Menuetto

BK=1

Musical staff BK=1, treble clef, key signature of one sharp (F#), 3/4 time signature. The staff contains a sequence of notes with dynamic markings: *T*, *f*, *p*, *fp*, and *fp*.

BK=2

Musical staff BK=2, treble clef, key signature of one sharp (F#), 3/4 time signature. The staff contains a sequence of notes with a dynamic marking of *f*. It ends with a repeat sign.

BK=3

Musical staff BK=3, treble clef, key signature of one sharp (F#), 3/4 time signature. The staff contains a sequence of notes with dynamic markings of *p* and *f*.

BK=4

Musical staff BK=4, treble clef, key signature of one sharp (F#), 3/4 time signature. The staff contains a sequence of notes with dynamic markings of *p*, *fp*, *fp*, and *f*.

BK=5

Musical staff BK=5, treble clef, key signature of one sharp (F#), 3/4 time signature. The staff contains a sequence of notes with dynamic markings of *p* and *f*. It ends with a repeat sign and the word "Fine".

BK=6

Musical staff BK=6, treble clef, key signature of two flats (Bb, Eb), 3/4 time signature. The staff contains a sequence of rests.

BK=7

Musical staff BK=7, treble clef, key signature of two flats (Bb, Eb), 3/4 time signature. The staff contains a sequence of rests.

BK=8

Musical staff BK=8, treble clef, key signature of two flats (Bb, Eb), 3/4 time signature. The staff contains a sequence of rests.

