

BK=1

Musical staff for BK=1, featuring a treble clef, a 3/4 time signature, and a key signature of one sharp (F#). The staff contains a melodic line with dynamic markings *f* and *S*. The piece concludes with a double bar line and repeat dots.

BK=2

Musical staff for BK=2, featuring a treble clef and a key signature of one sharp (F#). The staff contains a melodic line with dynamic markings *p* and *f*. The piece concludes with a double bar line and repeat dots.

BK=3 *Trio*

Musical staff for BK=3, featuring a treble clef and a key signature of one sharp (F#). The staff contains a melodic line with dynamic marking *p* and the marking *Sn*. The piece concludes with a double bar line and repeat dots.

BK=4

Musical staff for BK=4, featuring a treble clef and a key signature of one sharp (F#). The staff contains a melodic line with dynamic marking *p*. The piece concludes with a double bar line and repeat dots.

BK=5

Musical staff for BK=5, featuring a treble clef and a key signature of one sharp (F#). The staff contains a melodic line with dynamic marking *p*. The piece concludes with a double bar line and repeat dots.

A1

No. 8

BK=1



Musical notation for BK=1, starting with a treble clef and a 3/4 time signature. The piece begins with a forte (*f*) dynamic. The melody consists of eighth and quarter notes, ending with a repeat sign.

BK=2



Musical notation for BK=2, starting with a treble clef. The piece begins with a piano (*p*) dynamic, followed by a forte (*f*) dynamic. The melody features sixteenth-note runs and quarter notes, ending with a repeat sign.

BK=3



Musical notation for BK=3, starting with a treble clef. The piece begins with a piano (*p*) dynamic. The melody consists of eighth-note runs with slurs, ending with a repeat sign.

BK=4



Musical notation for BK=4, starting with a treble clef. The piece begins with a repeat sign, followed by eighth-note runs with slurs. The melody includes a sharp sign and ends with a repeat sign.

BK=5



Musical notation for BK=5, starting with a treble clef. The piece begins with eighth-note runs with slurs, followed by a repeat sign and then a blank staff.

BK=1

Musical staff for BK=1 in 3/4 time. The melody consists of quarter notes and half notes. The first measure starts with a treble clef, a key signature of one flat, and a 3/4 time signature. The piece begins with a forte (*f*) dynamic. The staff concludes with a double bar line and repeat dots.

BK=2

Musical staff for BK=2 in 3/4 time. The first two measures are rests. The melody begins in the third measure with a forte (*f*) dynamic. The staff concludes with a double bar line and repeat dots.

BK=3

Musical staff for BK=3 in 3/4 time. The melody consists of quarter notes and eighth notes. The piece begins with a piano (*p*) dynamic. The staff concludes with a double bar line and repeat dots.

BK=4

Musical staff for BK=4 in 3/4 time. The melody consists of quarter notes and half notes. The first measure is a quarter rest, followed by a double bar line and repeat dots. The piece continues with a half note and a quarter note. The staff concludes with a double bar line and repeat dots.

BK=5

Musical staff for BK=5 in 3/4 time. The melody consists of quarter notes and eighth notes. The piece begins with a half note and a quarter note. The staff concludes with a double bar line and repeat dots.

T

No. 8

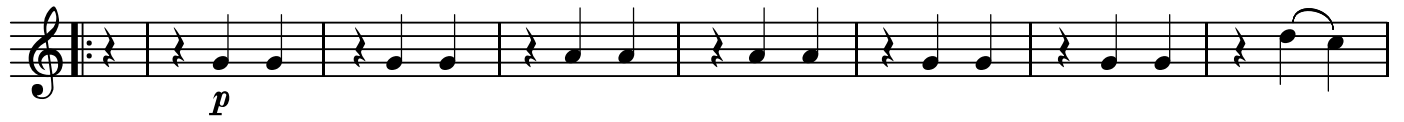
BK=1



BK=2



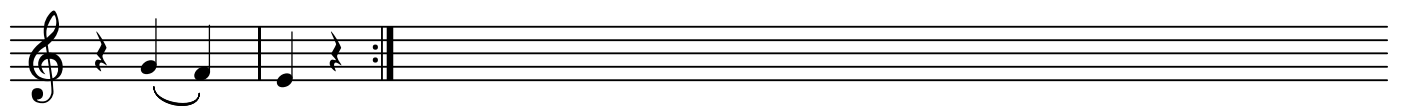
BK=3



BK=4



BK=5



B

No. 8

BK=1



Musical staff for BK=1, bass clef, 3/4 time signature. The staff contains a sequence of notes: G2, A2, B2, C3, D3, E3, F3, G3, A3, B3, C4, D4, E4, F4, G4, A4, B4, C5. Dynamics include a forte (*f*) marking and a *B* marking.

BK=2



Musical staff for BK=2, bass clef. The staff contains a sequence of notes: G2, A2, B2, C3, D3, E3, F3, G3, A3, B3, C4, D4, E4, F4, G4, A4, B4, C5. Dynamics include piano (*p*) and forte (*f*) markings.

BK=3



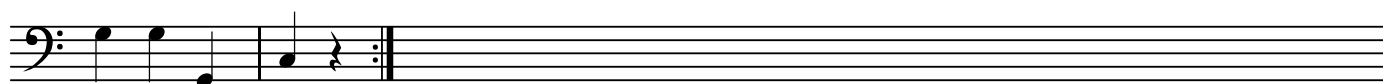
Musical staff for BK=3, bass clef. The staff contains a sequence of notes: G2, A2, B2, C3, D3, E3, F3, G3, A3, B3, C4, D4, E4, F4, G4, A4, B4, C5. Dynamics include piano (*p*) marking.

BK=4



Musical staff for BK=4, bass clef. The staff contains a sequence of notes: G2, A2, B2, C3, D3, E3, F3, G3, A3, B3, C4, D4, E4, F4, G4, A4, B4, C5.

BK=5



Musical staff for BK=5, bass clef. The staff contains a sequence of notes: G2, A2, B2, C3, D3, E3, F3, G3, A3, B3, C4, D4, E4, F4, G4, A4, B4, C5.

*Menuetto D.C*