

Sn

2.Andante

BK=1

Musical staff for BK=1, showing a treble clef, key signature of two flats (Bb, Eb), and a 4/4 time signature. The staff contains a whole rest in the first measure, followed by three measures of whole rests.

BK=2

Musical staff for BK=2, showing a treble clef, key signature of two flats (Bb, Eb), and a 4/4 time signature. The staff contains four measures of whole rests.

BK=3

Musical staff for BK=3, showing a treble clef, key signature of two flats (Bb, Eb), and a 4/4 time signature. The staff contains four measures of whole rests.

BK=4

Musical staff for BK=4, showing a treble clef, key signature of two flats (Bb, Eb), and a 4/4 time signature. The staff contains four measures of whole rests.

BK=5

Musical staff for BK=5, showing a treble clef, key signature of two flats (Bb, Eb), and a 4/4 time signature. The staff contains four measures of whole rests.

BK=6

Musical staff for BK=6, showing a treble clef, key signature of two flats (Bb, Eb), and a 4/4 time signature. The staff contains four measures of music: a whole rest, a quarter rest, a quarter note G4, and a quarter note F4.

BK=7

Musical staff for BK=7, showing a treble clef, key signature of two flats (Bb, Eb), and a 4/4 time signature. The staff contains four measures of music: a quarter note G4, a quarter note F4, a quarter note E4, and a quarter note D4.

BK=8

Musical staff for BK=8, showing a treble clef, key signature of two flats (Bb, Eb), and a 4/4 time signature. The staff contains four measures of music: a quarter note G4, a quarter note F4, a quarter note E4, and a quarter note D4.

BK=9

Musical staff for BK=9, showing a treble clef, key signature of two flats (Bb, Eb), and a 4/4 time signature. The staff contains four measures of music: a quarter note G4, a quarter note F4, a quarter note E4, and a quarter note D4.

BK=10

Musical staff for BK=10, showing a treble clef, key signature of two flats (Bb, Eb), and a 4/4 time signature. The staff contains four measures of music: a quarter note G4, a quarter note F4, a quarter note E4, and a quarter note D4.

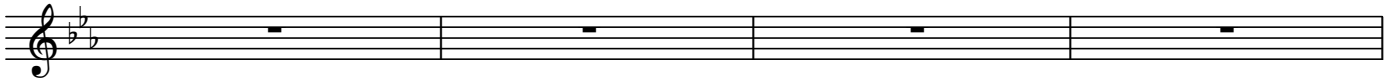
BK=11

Musical staff for BK=11, showing a treble clef, key signature of two flats (Bb, Eb), and a 4/4 time signature. The staff contains four measures of music: a quarter note G4, a quarter note F4, a quarter note E4, and a quarter note D4.

BK=12

Musical staff for BK=12, showing a treble clef, key signature of two flats (Bb, Eb), and a 4/4 time signature. The staff contains four measures of music: a quarter note G4, a quarter note F4, a quarter note E4, and a quarter note D4.

BK=13



BK=14



BK=15



BK=16



BK=17



BK=18



BK=19



BK=20



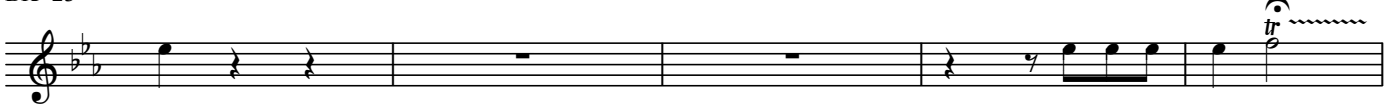
BK=21



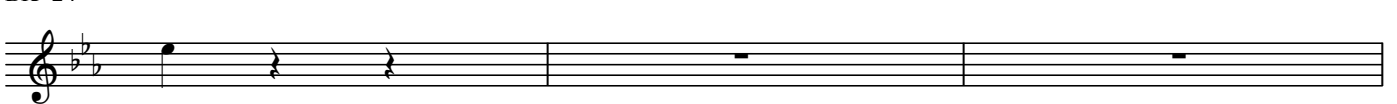
BK=22



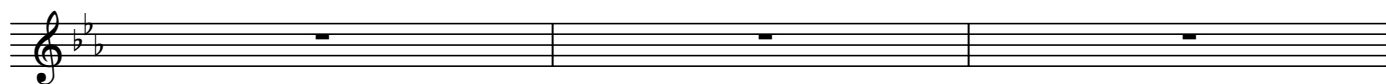
BK=23



BK=24



BK=25



BK=26



S

2.Andante

BK=1

Musical staff BK=1, treble clef, 3/4 time signature, key signature of two flats. The staff contains a melodic line starting with a quarter note G4, followed by eighth notes, and ending with a quarter note G4. A dynamic marking 'S' is placed below the first measure.

BK=2

Musical staff BK=2, treble clef, 3/4 time signature, key signature of two flats. The staff contains a melodic line with eighth notes and quarter notes, ending with a quarter note G4.

BK=3

Musical staff BK=3, treble clef, 3/4 time signature, key signature of two flats. The staff contains a melodic line with eighth notes and quarter notes, ending with a quarter note G4. A trill marking 'tr' is placed above the final measure.

BK=4

Musical staff BK=4, treble clef, 3/4 time signature, key signature of two flats. The staff contains a melodic line with eighth notes and quarter notes, starting with a dynamic marking 'p'.

BK=5

Musical staff BK=5, treble clef, 3/4 time signature, key signature of two flats. The staff contains a melodic line with eighth notes and quarter notes, starting with a dynamic marking 'f'. A trill marking 'tr' is placed above the final measure.

BK=6

Musical staff BK=6, treble clef, 3/4 time signature, key signature of two flats. The staff contains a melodic line with eighth notes and quarter notes, starting with a dynamic marking 'p'.

BK=7

Musical staff BK=7, treble clef, 3/4 time signature, key signature of two flats. The staff contains a melodic line with eighth notes and quarter notes, starting with a dynamic marking 'f' and ending with a dynamic marking 'p'.

BK=8

Musical staff BK=8, treble clef, 3/4 time signature, key signature of two flats. The staff contains a melodic line with eighth notes and quarter notes, starting with a triplet marking '3'.

BK=9

Musical staff BK=9, treble clef, 3/4 time signature, key signature of two flats. The staff contains a melodic line with eighth notes and quarter notes.

BK=10

Musical staff BK=10, treble clef, 3/4 time signature, key signature of two flats. The staff contains a melodic line with eighth notes and quarter notes, ending with a dynamic marking 'f'.

BK=11

Musical staff BK=11, treble clef, 3/4 time signature, key signature of two flats. The staff contains a melodic line with eighth notes and quarter notes, starting with a dynamic marking 'p'. A triplet marking '3' is placed above the final measure.

BK=12

Musical staff BK=12, treble clef, 3/4 time signature, key signature of two flats. The staff contains a melodic line with eighth notes and quarter notes, starting with a dynamic marking 'cresc.' and ending with a dynamic marking 'f'.

BK=13



BK=14



BK=15



BK=16



BK=17



BK=18



BK=19



BK=20



BK=21



BK=22



BK=23



BK=24



BK=25



BK=26



T1

2.Andante

BK=1

Musical staff for BK=1, featuring a treble clef, a key signature of two flats, and a 3/4 time signature. The staff contains a melodic line with various note values and rests.

BK=2

Musical staff for BK=2, featuring a treble clef, a key signature of two flats, and a 3/4 time signature. The staff contains a melodic line with various note values and rests.

BK=3

Musical staff for BK=3, featuring a treble clef, a key signature of two flats, and a 3/4 time signature. The staff contains a melodic line with various note values and rests, including a trill (tr) in the final measure.

BK=4

Musical staff for BK=4, featuring a treble clef, a key signature of two flats, and a 3/4 time signature. The staff contains a melodic line with various note values and rests, marked with a piano (*p*) dynamic.

BK=5

Musical staff for BK=5, featuring a treble clef, a key signature of two flats, and a 3/4 time signature. The staff contains a melodic line with various note values and rests, marked with a forte (*f*) dynamic and a trill (tr) in the final measure.

BK=6

Musical staff for BK=6, featuring a treble clef, a key signature of two flats, and a 3/4 time signature. The staff contains a melodic line with various note values and rests, marked with a piano (*p*) dynamic.

BK=7

Musical staff for BK=7, featuring a treble clef, a key signature of two flats, and a 3/4 time signature. The staff contains a melodic line with various note values and rests, marked with a forte (*f*) dynamic and a piano (*p*) dynamic.

BK=8

Musical staff for BK=8, featuring a treble clef, a key signature of two flats, and a 3/4 time signature. The staff contains a melodic line with various note values and rests.

BK=9

Musical staff for BK=9, featuring a treble clef, a key signature of two flats, and a 3/4 time signature. The staff contains a melodic line with various note values and rests.

BK=10

Musical staff for BK=10, featuring a treble clef, a key signature of two flats, and a 3/4 time signature. The staff contains a melodic line with various note values and rests, marked with a forte (*f*) dynamic.

BK=11

Musical staff for BK=11, featuring a treble clef, a key signature of two flats, and a 3/4 time signature. The staff contains a melodic line with various note values and rests, marked with a piano (*p*) dynamic and a triplet (3) in the final measure.

BK=12

Musical staff for BK=12, featuring a treble clef, a key signature of two flats, and a 3/4 time signature. The staff contains a melodic line with various note values and rests, marked with a crescendo (*cresc.*) and a forte (*f*) dynamic.

BK=13



BK=14



BK=15



BK=16



BK=17



BK=18



BK=19



BK=20



BK=21



BK=22



BK=23

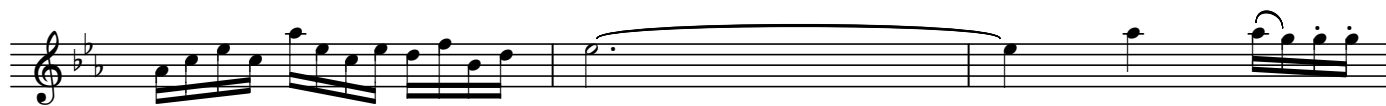


BK=24





BK=25



BK=26



T2

2.Andante

BK=1

Musical staff for BK=1, featuring a treble clef, a key signature of two flats (B-flat and E-flat), and a 3/4 time signature. The staff contains a sequence of eighth and quarter notes, with some notes beamed together.

T2  
BK=2

Musical staff for BK=2, continuing the melodic line from BK=1 with similar rhythmic patterns and articulation.

BK=3

Musical staff for BK=3, featuring a more complex rhythmic pattern with sixteenth notes and a trill (tr) in the final measure.

BK=4

Musical staff for BK=4, featuring a melodic line with a piano (*p*) dynamic marking.

BK=5

Musical staff for BK=5, featuring a melodic line with a forte (*f*) dynamic marking and a trill (tr) in the final measure.

BK=6

Musical staff for BK=6, featuring a melodic line with a piano (*p*) dynamic marking.

BK=7

Musical staff for BK=7, featuring a melodic line with a forte (*f*) dynamic marking and a piano (*p*) dynamic marking.

BK=8

Musical staff for BK=8, featuring a melodic line with a piano (*p*) dynamic marking.

BK=9

Musical staff for BK=9, featuring a melodic line with a piano (*p*) dynamic marking.

BK=10

Musical staff for BK=10, featuring a melodic line with a forte (*f*) dynamic marking.

BK=11

Musical staff for BK=11, featuring a melodic line with a piano (*p*) dynamic marking.

BK=12

Musical staff for BK=12, featuring a melodic line with a crescendo (*cresc.*) and a forte (*f*) dynamic marking.

BK=13



BK=14



BK=15



BK=16



BK=17



BK=18



BK=19



BK=20



BK=21



BK=22



BK=23



BK=24



BK=25



BK=26



GB

2.Andante

BK=1

GB

Musical staff for BK=1, bass clef, 3/4 time signature, key signature of two flats. The staff contains a sequence of notes starting with a quarter rest, followed by quarter and eighth notes.

BK=2

Musical staff for BK=2, bass clef, 3/4 time signature, key signature of two flats. The staff contains a sequence of eighth notes.

BK=3

Musical staff for BK=3, bass clef, 3/4 time signature, key signature of two flats. The staff contains a sequence of eighth notes.

BK=4

*p*

Musical staff for BK=4, bass clef, 3/4 time signature, key signature of two flats. The staff contains a sequence of quarter notes.

BK=5

*f*

Musical staff for BK=5, bass clef, 3/4 time signature, key signature of two flats. The staff contains a sequence of quarter notes with some rests.

BK=6

*p*

Musical staff for BK=6, bass clef, 3/4 time signature, key signature of two flats. The staff contains a sequence of quarter notes with some rests.

BK=7

*f* *p*

Musical staff for BK=7, bass clef, 3/4 time signature, key signature of two flats. The staff contains a sequence of eighth notes.

BK=8

Musical staff for BK=8, bass clef, 3/4 time signature, key signature of two flats. The staff contains a sequence of quarter notes.

BK=9

Musical staff for BK=9, bass clef, 3/4 time signature, key signature of two flats. The staff contains a sequence of eighth notes.

BK=10

*f*

Musical staff for BK=10, bass clef, 3/4 time signature, key signature of two flats. The staff contains a sequence of quarter notes.

BK=11

*p*

Musical staff for BK=11, bass clef, 3/4 time signature, key signature of two flats. The staff contains a sequence of quarter notes.

BK=12

*cresc.* *f*

Musical staff for BK=12, bass clef, 3/4 time signature, key signature of two flats. The staff contains a sequence of eighth notes.

BK=13



BK=14



BK=15



BK=16



BK=17



BK=18



BK=19



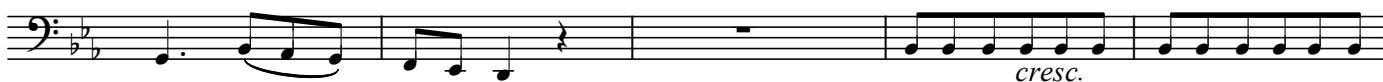
BK=20



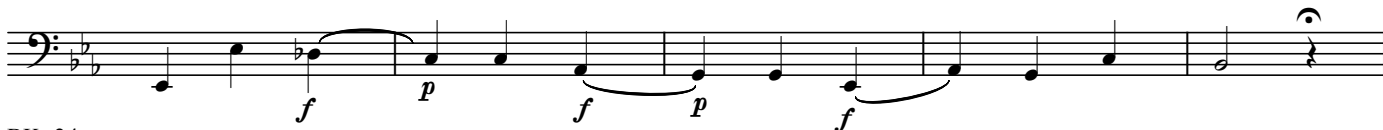
BK=21



BK=22



BK=23



BK=24



BK=25



BK=26

