

QUARTETT KV160

1.Allegro

W.A.Mozart

BK=1

Musical staff BK=1, treble clef, C major, 3/4 time. Dynamics: *f*, *tr*.

BK=2

Musical staff BK=2, treble clef, C major, 3/4 time.

BK=3

Musical staff BK=3, treble clef, C major, 3/4 time.

BK=4

Musical staff BK=4, treble clef, C major, 3/4 time.

BK=5

Musical staff BK=5, treble clef, C major, 3/4 time. Dynamics: *p*.

BK=6

Musical staff BK=6, treble clef, C major, 3/4 time. Dynamics: *f*.

BK=7

Musical staff BK=7, treble clef, C major, 3/4 time. Dynamics: *cresc.*, *f*.

BK=8

Musical staff BK=8, treble clef, C major, 3/4 time. Dynamics: *p*, *fp*, *fp*, *cresc.*, *f*.

BK=9

Musical staff BK=9, treble clef, C major, 3/4 time. Dynamics: *fp*, *fp*.

BK=10

Musical staff BK=10, treble clef, C major, 3/4 time. Dynamics: *f*, *f*.

BK=11

Musical staff BK=11, treble clef, C major, 3/4 time. Dynamics: *f*, *tr*.

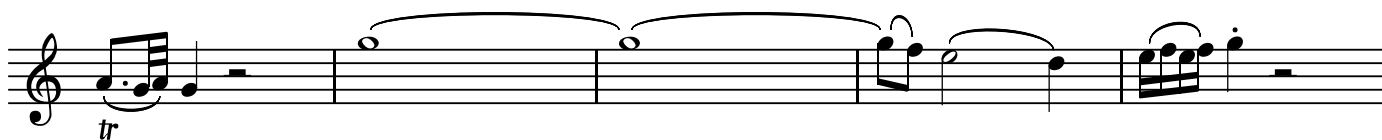
BK=12



BK=13



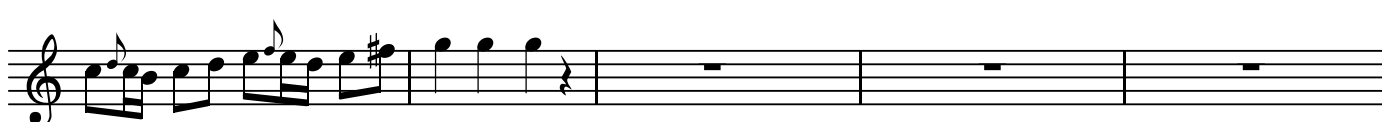
BK=14



BK=15



BK=16



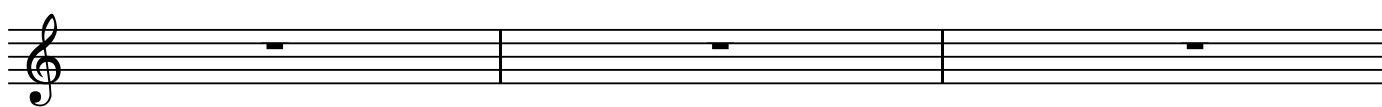
BK=17



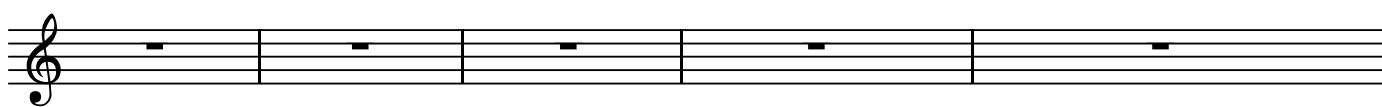
BK=18



BK=19



BK=20



BK=21



BK=22



QUARTETT KV160

1.Allegro

W.A.Mozart

BK=1

Musical staff BK=1, starting with a treble clef and a common time signature. The music begins with a forte (*f*) dynamic. It features a series of eighth-note patterns, including a trill (*tr*) in the final measure of the first system.

BK=2

Musical staff BK=2, continuing the eighth-note patterns from the previous staff.

BK=3

Musical staff BK=3, featuring a melodic line with a sharp sign (#) indicating a key signature change.

BK=4

Musical staff BK=4, starting with a piano (*p*) dynamic. It contains a series of eighth-note patterns.

BK=5

Musical staff BK=5, continuing the eighth-note patterns with a piano (*p*) dynamic.

BK=6

Musical staff BK=6, featuring eighth-note patterns that conclude with a forte (*f*) dynamic.

BK=7

Musical staff BK=7, featuring a crescendo (*cresc.*) leading to a forte (*f*) dynamic.

BK=8

Musical staff BK=8, starting with a piano (*p*) dynamic, followed by fortissimo (*fp*) and a crescendo (*cresc.*) leading to forte (*f*).

BK=9

Musical staff BK=9, featuring fortissimo (*fp*) dynamics and eighth-note patterns.

BK=10

Musical staff BK=10, featuring forte (*f*) and piano (*p*) dynamics.

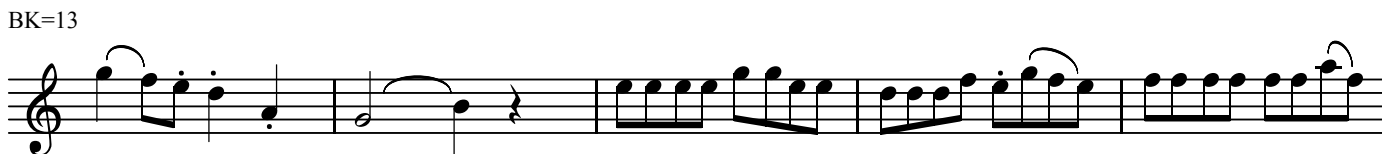
BK=11

Musical staff BK=11, starting with a piano (*p*) dynamic, followed by forte (*f*) and a trill (*tr*) in the final measure.

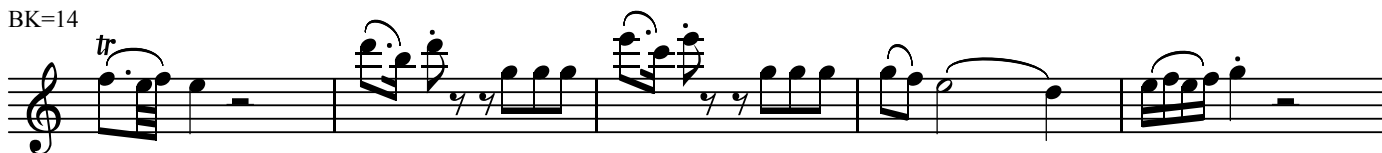
BK=12



BK=13



BK=14



BK=15



BK=16



BK=17



BK=18



BK=19



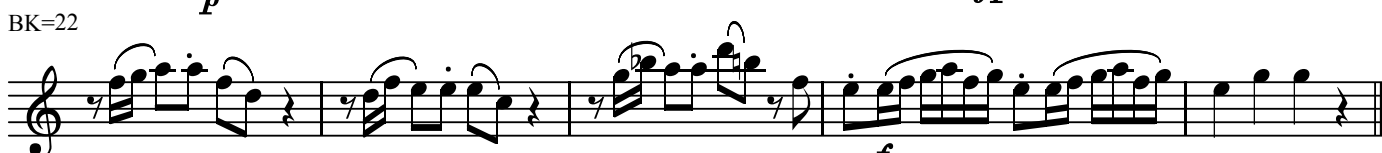
BK=20



BK=21



BK=22



T

QUARTETT KV160

1.Allegro

W.A.Mozart

BK=1

Musical staff BK=1, starting with a treble clef and a common time signature. The first measure contains a dynamic marking *f* and a *T* (trill) symbol above the first note. The staff contains a series of eighth and sixteenth notes.

BK=2

Musical staff BK=2, continuing the melodic line with eighth and sixteenth notes.

BK=3

Musical staff BK=3, featuring a continuous eighth-note accompaniment.

BK=4

Musical staff BK=4, starting with a dynamic marking *p* and containing a mix of eighth and sixteenth notes.

BK=5

Musical staff BK=5, featuring a series of eighth notes with a sharp sign in the final measure.

BK=6

Musical staff BK=6, containing eighth notes with a dynamic marking *f* at the end.

BK=7

Musical staff BK=7, mostly containing rests, with a dynamic marking *cresc.* and *f* at the end.

BK=8

Musical staff BK=8, starting with a dynamic marking *p*, followed by *fp* and *f* markings, and ending with *cresc.* and *f*.

BK=9

Musical staff BK=9, featuring a dynamic marking *fp* and *f* markings.

BK=10

Musical staff BK=10, containing eighth notes with dynamic markings *f*, *p*, and *f*.

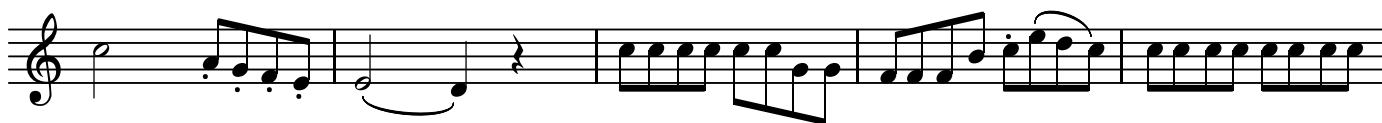
BK=11

Musical staff BK=11, starting with a dynamic marking *p* and *f*, followed by eighth notes.

BK=12



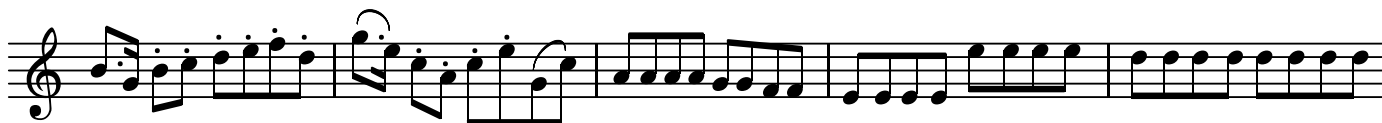
BK=13



BK=14



BK=15



BK=16



BK=17



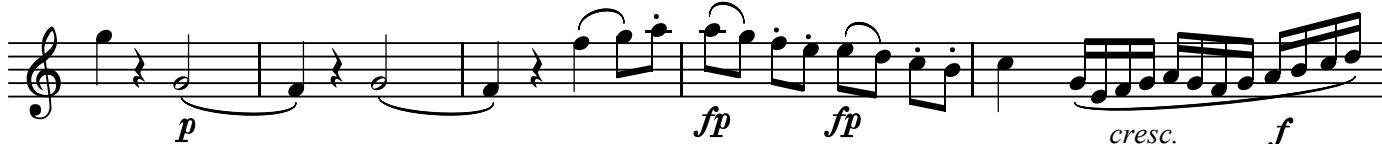
BK=18



BK=19



BK=20



BK=21



BK=22



QUARTETT KV160

1.Allegro

W.A.Mozart

BK=1

First musical staff (BK=1) in bass clef, common time. It begins with a forte (*f*) dynamic and a *B* marking. The staff contains a series of eighth-note patterns.

BK=2

Second musical staff (BK=2) in bass clef, common time. It continues the eighth-note patterns from the first staff.

BK=3

Third musical staff (BK=3) in bass clef, common time. It continues the eighth-note patterns.

BK=4

Fourth musical staff (BK=4) in bass clef, common time. It features a piano (*p*) dynamic and contains mostly quarter notes.

BK=5

Fifth musical staff (BK=5) in bass clef, common time. It continues with quarter notes.

BK=6

Sixth musical staff (BK=6) in bass clef, common time. It features eighth-note patterns and ends with a forte (*f*) dynamic.

BK=7

Seventh musical staff (BK=7) in bass clef, common time. It features eighth-note patterns with a *cresc.* marking and ends with a forte (*f*) dynamic.

BK=8

Eighth musical staff (BK=8) in bass clef, common time. It features quarter notes with dynamics *p*, *fp*, *fp*, *cresc.*, and *f*.

BK=9

Ninth musical staff (BK=9) in bass clef, common time. It features quarter notes with dynamics *fp* and *fp*.

BK=10

Tenth musical staff (BK=10) in bass clef, common time. It features a long melodic line with dynamics *f* and *f*.

BK=11

Eleventh musical staff (BK=11) in bass clef, common time. It features eighth-note patterns starting with a forte (*f*) dynamic.

BK=12

First musical staff (BK=12) in bass clef, featuring a sequence of eighth and sixteenth notes with a 7-measure rest.

BK=13

Second musical staff (BK=13) in bass clef, featuring a sequence of eighth and sixteenth notes with a 7-measure rest.

BK=14

Third musical staff (BK=14) in bass clef, featuring a sequence of eighth and sixteenth notes with a 7-measure rest.

BK=15

Fourth musical staff (BK=15) in bass clef, featuring a sequence of eighth and sixteenth notes with a 7-measure rest.

BK=16

Fifth musical staff (BK=16) in bass clef, featuring a sequence of eighth and sixteenth notes with a 7-measure rest. Dynamics: *p*.

BK=17

Sixth musical staff (BK=17) in bass clef, featuring a sequence of eighth and sixteenth notes with a 7-measure rest.

BK=18

Seventh musical staff (BK=18) in bass clef, featuring a sequence of eighth and sixteenth notes with a 7-measure rest. Dynamics: *f*.

BK=19

Eighth musical staff (BK=19) in bass clef, featuring a sequence of eighth and sixteenth notes with a 7-measure rest. Dynamics: *p*, *cresc.*, *f*.

BK=20

Ninth musical staff (BK=20) in bass clef, featuring a sequence of eighth and sixteenth notes with a 7-measure rest. Dynamics: *p*, *fp*, *fp*, *cresc.*, *f*.

BK=21

Tenth musical staff (BK=21) in bass clef, featuring a sequence of eighth and sixteenth notes with a 7-measure rest. Dynamics: *p*, *fp*, *fp*.

BK=22

Eleventh musical staff (BK=22) in bass clef, featuring a sequence of eighth and sixteenth notes with a 7-measure rest. Dynamics: *f*.