

Sn

5.Menuetto

BK=1



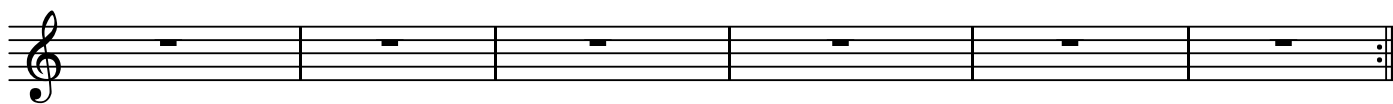
BK=2



BK=3

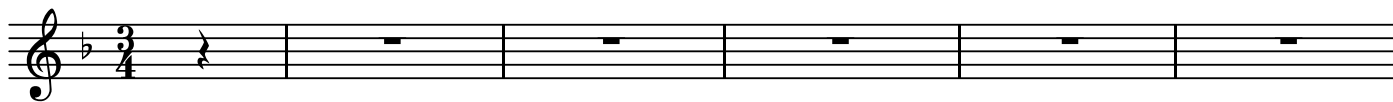


BK=4



BK=5

Trio 1



BK=6

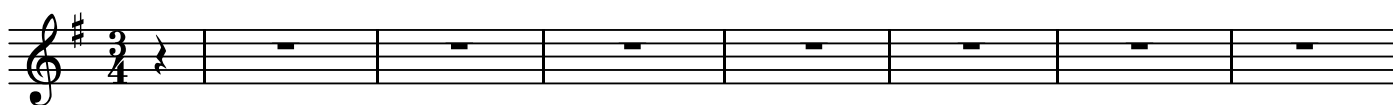


BK=7

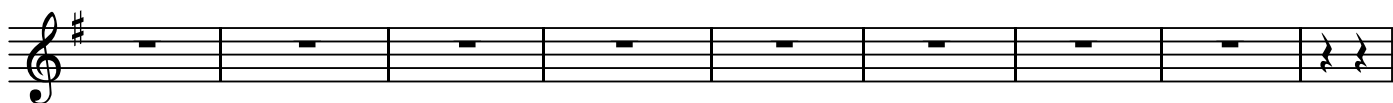


BK=8

Trio 2



BK=9



BK=10



BK=11

♩ Coda

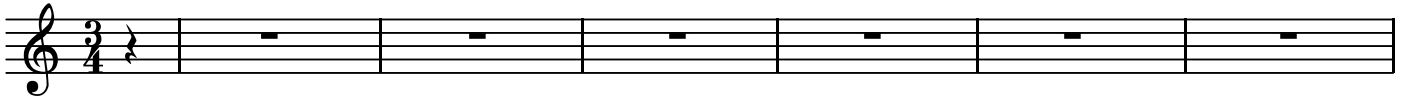
Musical notation for BK=11, Coda section. It consists of a single staff in 3/4 time with a treble clef. The melody starts on G4, moves to A4, B4, C5, then back to G4, A4, B4, C5, and ends with a final G4. The notation includes a Coda symbol at the beginning and a double bar line at the end.

BK=12

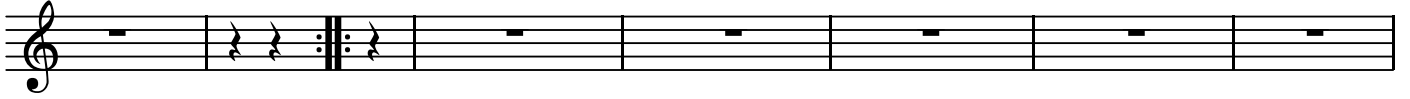
Musical notation for BK=12. It consists of a single staff in 3/4 time with a treble clef. The melody starts on G4, moves to A4, B4, C5, then back to G4, A4, B4, C5, and ends with a final G4. The notation includes a double bar line at the end.

5.Menuetto

BK=1



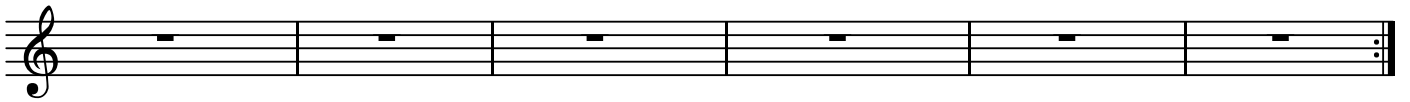
BK=2



BK=3



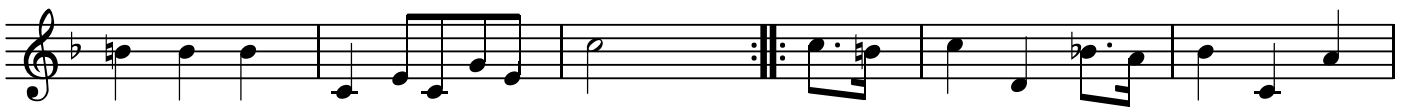
BK=4



BK=5



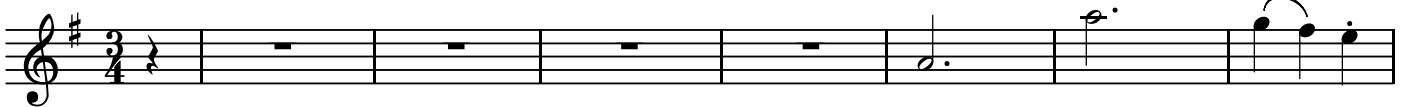
BK=6



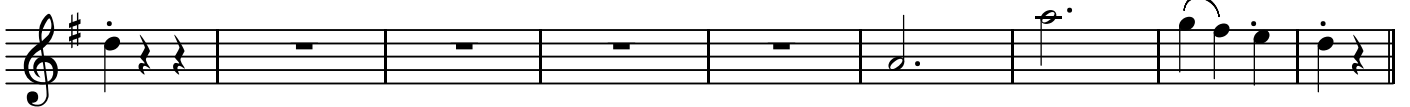
BK=7



BK=8



BK=9



BK=10



BK=11

♩ Coda

Musical notation for BK=11, Coda section. It consists of a single staff in 3/4 time with a treble clef. The notation includes a quarter rest, followed by three measures of eighth-note runs, a quarter note, a quarter rest, and a final measure with a quarter note and a beamed eighth-note triplet.

BK=12

Musical notation for BK=12. It consists of a single staff in 3/4 time with a treble clef. The notation includes a quarter note, two eighth notes, a quarter note, and a half note, followed by a double bar line.

5.Menuetto

BK=1



BK=2



BK=3



BK=4



BK=5



BK=6



BK=7



BK=8



BK=9



BK=10



BK=11

♩ Coda

BK=12

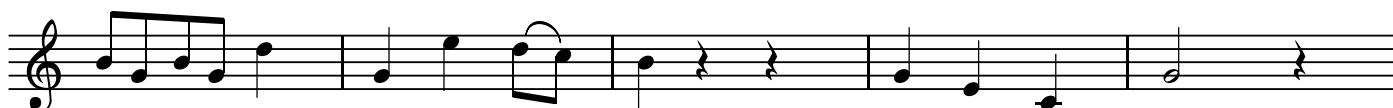
BK=1



BK=2



BK=3



BK=4



BK=5



BK=6



BK=7



BK=8



BK=9



BK=10



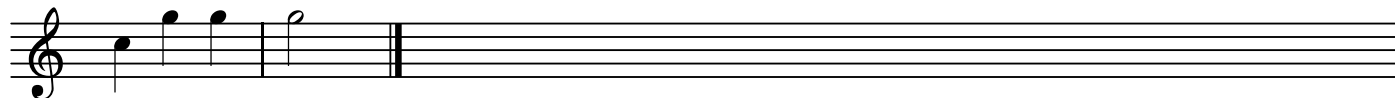
BK=11

♩ Coda



A musical staff in 3/4 time with a treble clef. The staff contains eight measures of music. The notes are: G4 (quarter), A4 (quarter), B4 (quarter), C5 (quarter), B4 (quarter), A4 (quarter), G4 (quarter), and F4 (quarter). The first measure has a whole rest. Above the staff, there is a Coda symbol (a circle with a cross) and the word "Coda".

BK=12



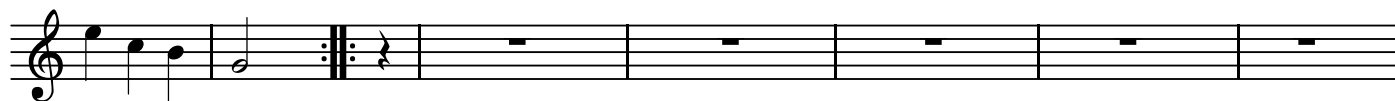
A musical staff in 3/4 time with a treble clef. The staff contains four measures of music. The notes are: G4 (quarter), A4 (quarter), B4 (quarter), and C5 (quarter). The first measure has a whole rest. The staff ends with a double bar line.



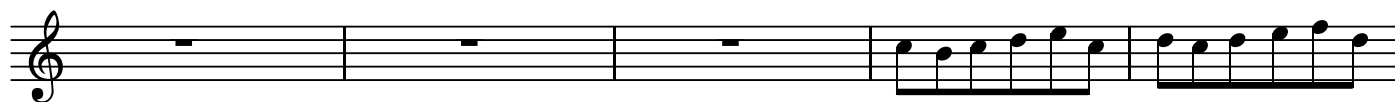
BK=1



BK=2



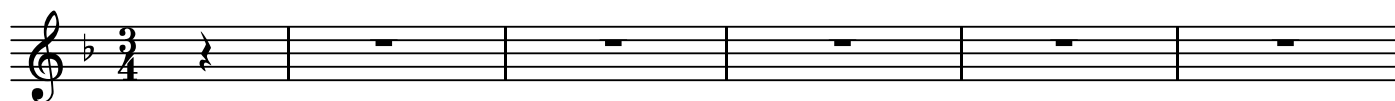
BK=3



BK=4



BK=5



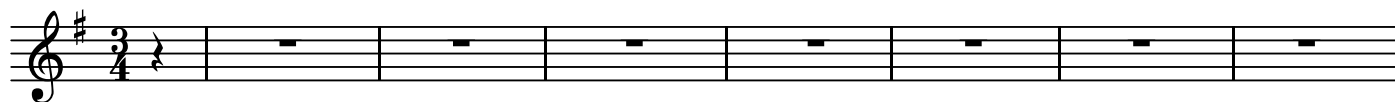
BK=6



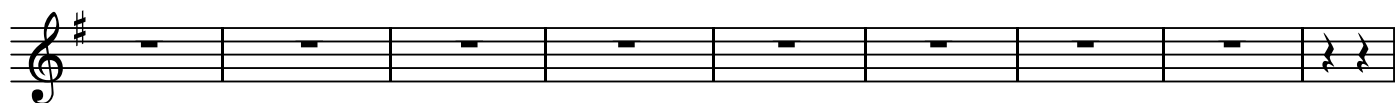
BK=7



BK=8



BK=9



BK=10



BK=11

♩ Coda

Musical notation for BK=11, Coda section. It consists of a single staff in 3/4 time with a treble clef. The notation includes a quarter rest, followed by three eighth-note runs, a quarter note, a quarter rest, and a final eighth-note run.

BK=12

Musical notation for BK=12. It consists of a single staff in 3/4 time with a treble clef. The notation includes a quarter note, two eighth notes, a quarter note, and a double bar line.

5.Menuetto

BK=1



BK=2



BK=3



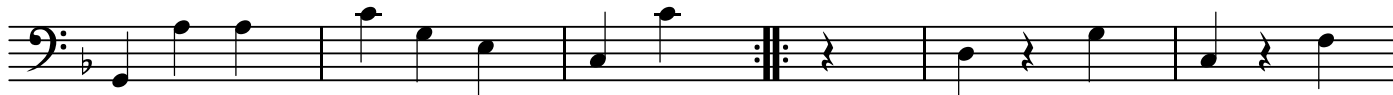
BK=4



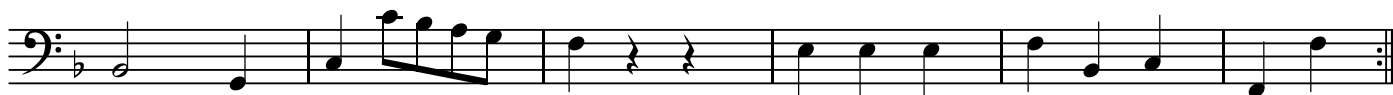
BK=5



BK=6



BK=7



Menuetto D.C

BK=8



BK=9



BK=10



Menuetto D.C

