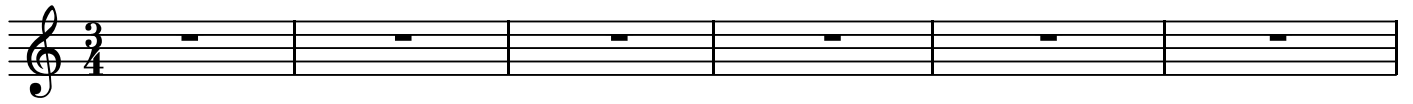


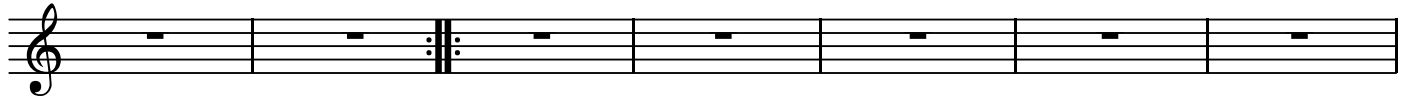
Sn

3.Menuetto

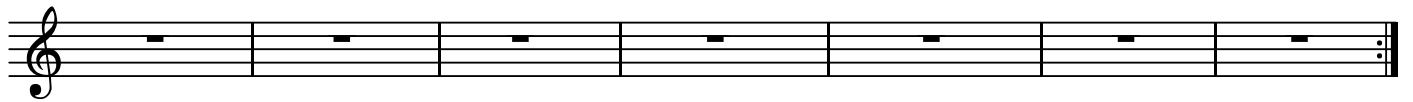
BK=1



BK=2

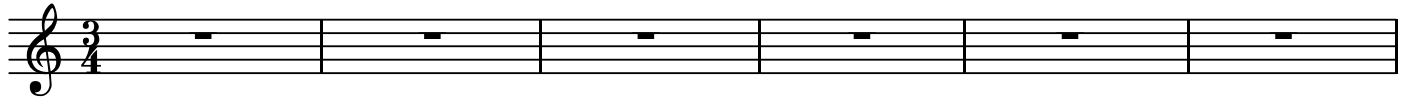


BK=3

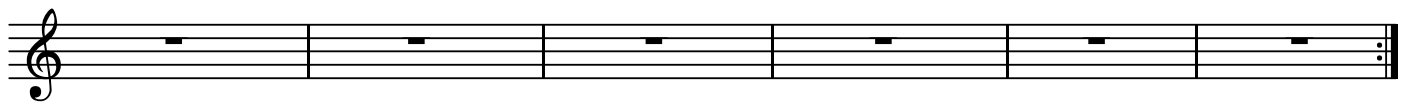


BK=4

Trio 1



BK=5



BK=6

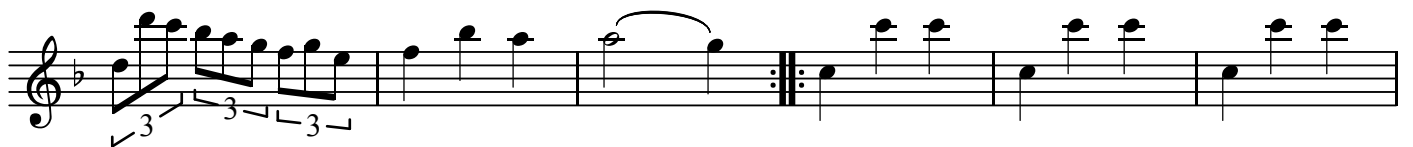


BK=7

Trio 2



BK=8



BK=9



BK=10

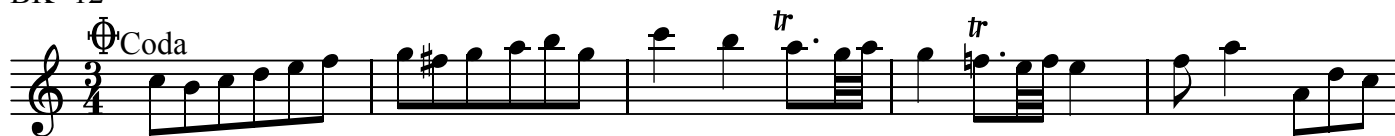
Trio 3



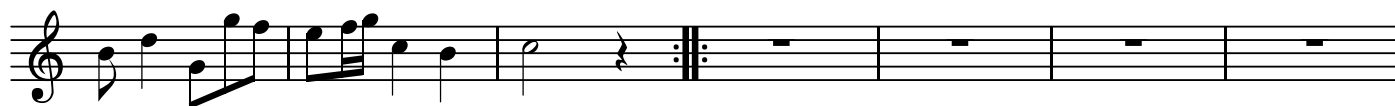
BK=11



BK=12



BK=13



BK=14

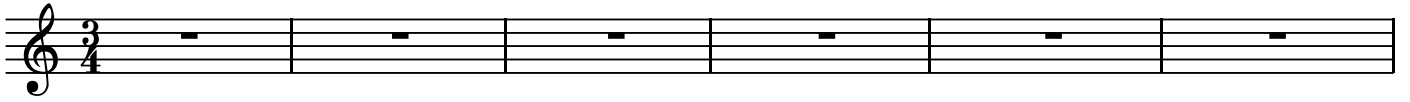


BK=15

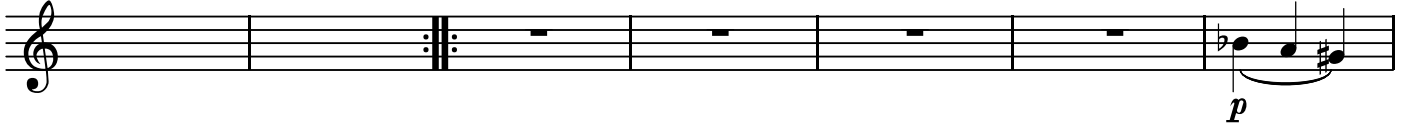


3.Menuetto

BK=1



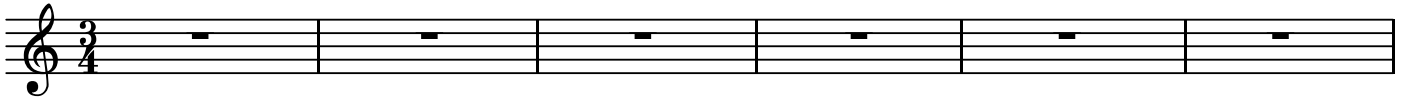
BK=2



BK=3



BK=4



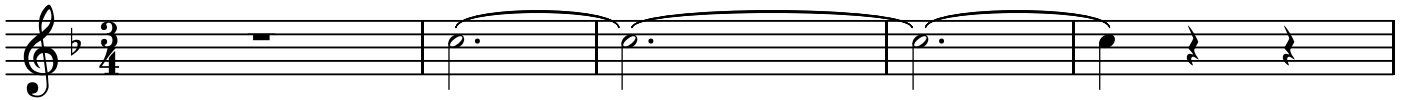
BK=5



BK=6



BK=7



BK=8



BK=9



BK=10



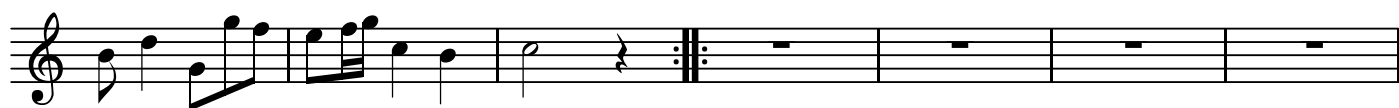
BK=11



BK=12



BK=13



BK=14



BK=15

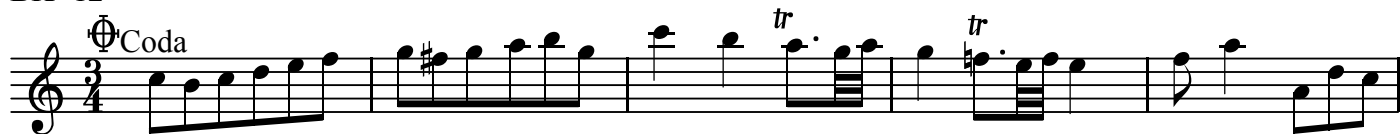




BK=11



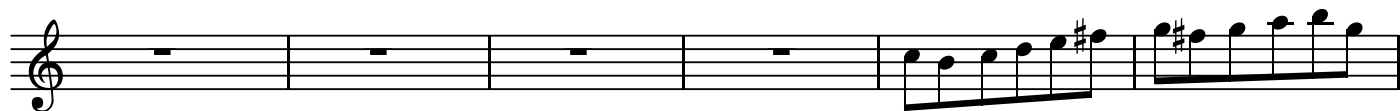
BK=12



BK=13



BK=14



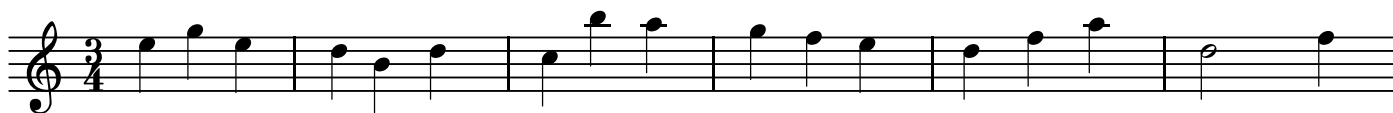
BK=15



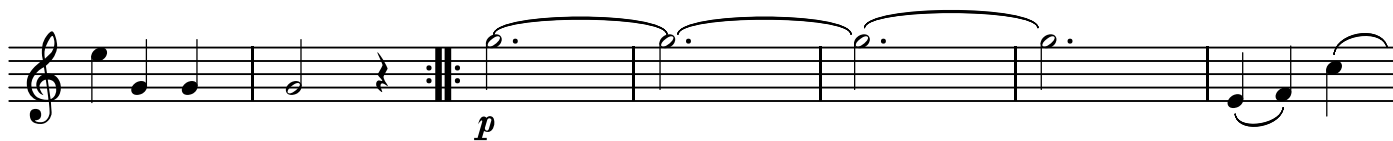
T1

3.Menuetto

BK=1



BK=2



BK=3



BK=4



BK=5



BK=6



BK=7



BK=8



BK=9



BK=10



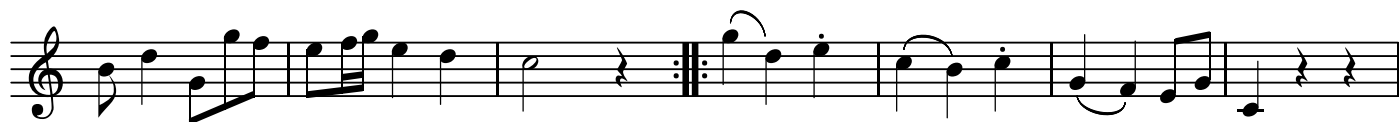
BK=11



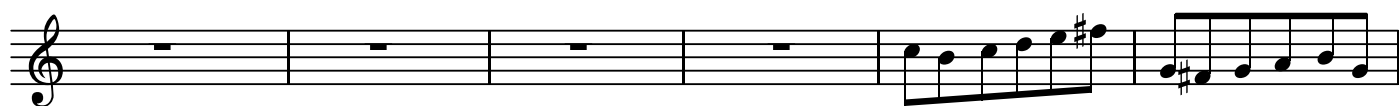
BK=12



BK=13



BK=14

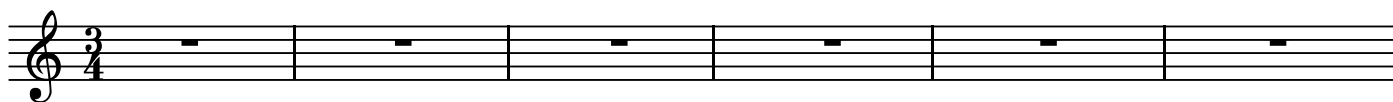


BK=15

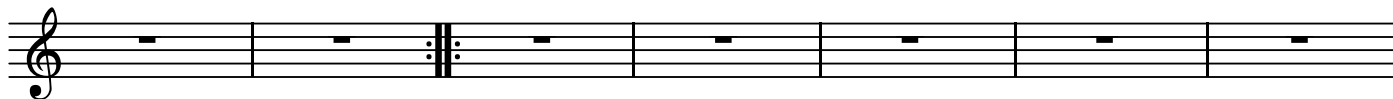




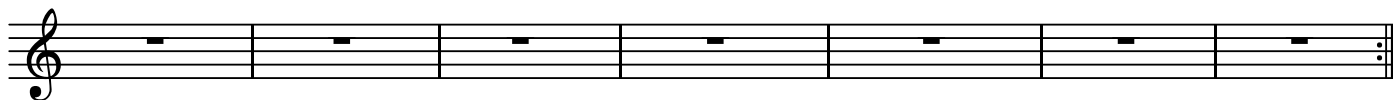
BK=1



BK=2



BK=3



BK=4



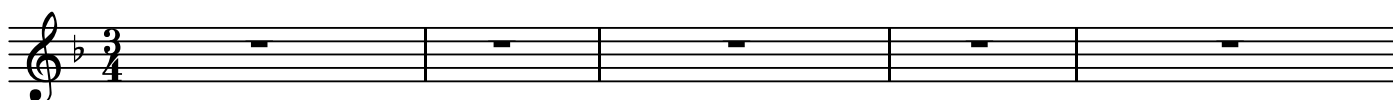
BK=5



BK=6



BK=7



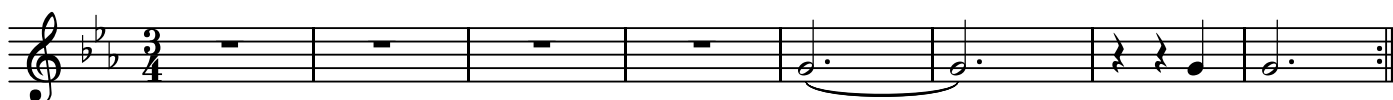
BK=8



BK=9



BK=10



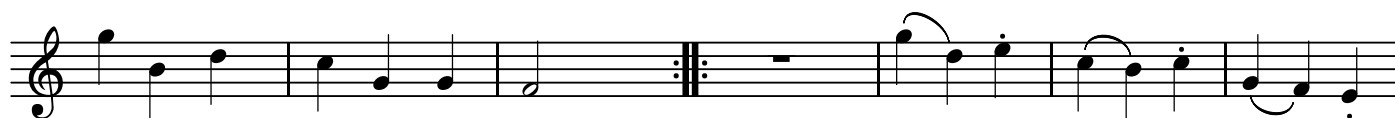
BK=11



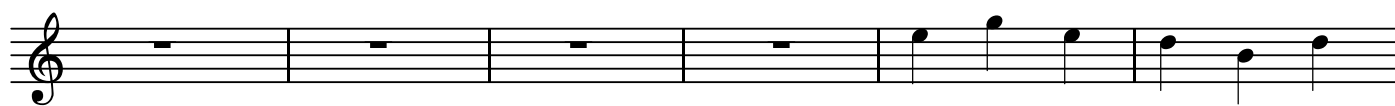
BK=12



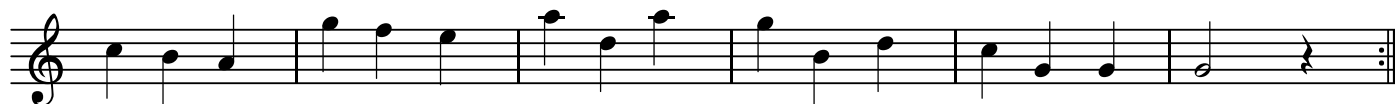
BK=13



BK=14



BK=15



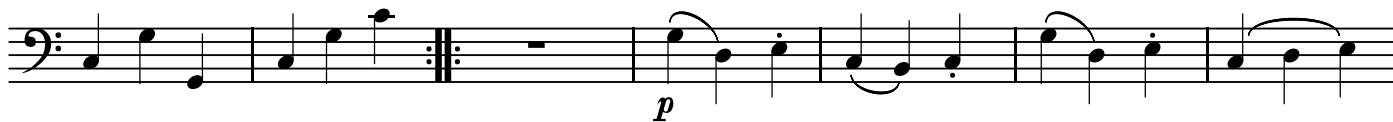
B

3.Menuetto

BK=1



BK=2



BK=3



BK=4



BK=5



BK=6



Menuetto D.C

BK=7



BK=8



BK=9



Menuetto D.C

BK=10



BK=11



Musical notation for BK=11, featuring a bass clef, a key signature of two flats (B-flat and E-flat), and a 3/4 time signature. The piece begins with a repeat sign. The melody consists of eighth and quarter notes, with some rests. A slur covers the final two measures, which end with a repeat sign.

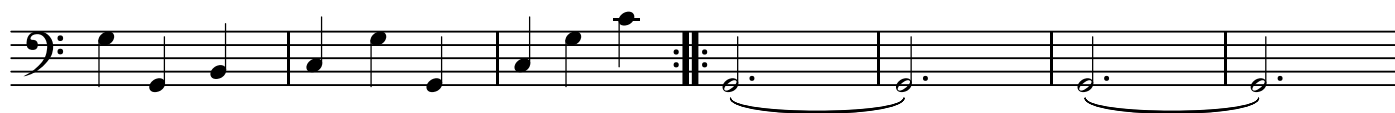
Menuetto D.C

BK=12



Musical notation for BK=12, featuring a bass clef, a key signature of one flat (B-flat), and a 3/4 time signature. The piece begins with a Coda symbol (a circle with a cross) and the word "Coda". The melody consists of quarter and eighth notes.

BK=13



Musical notation for BK=13, featuring a bass clef and a key signature of one flat (B-flat). The piece begins with a repeat sign. The melody consists of quarter and eighth notes. A double bar line with repeat dots is followed by two measures of half notes, each with a slur underneath.

BK=14



Musical notation for BK=14, featuring a bass clef and a key signature of one flat (B-flat). The melody consists of quarter and eighth notes.

BK=15



Musical notation for BK=15, featuring a bass clef and a key signature of one flat (B-flat). The melody consists of quarter and eighth notes. The final measure has a fermata over the note.