

DIVERTIMENT KV113

1.Allegro

W.A.Mozart

BK=1

Musical staff BK=1, starting with a treble clef and a common time signature. The melody begins with a quarter note G4, followed by quarter notes A4, B4, and C5. It continues with a quarter rest, quarter notes D5, E5, and F5, then a quarter note G5. The piece concludes with a quarter note F5, a quarter note E5, and a quarter note D5. A dynamic marking of *s* (pianissimo) is placed below the first note.

BK=2

Musical staff BK=2, starting with a treble clef and a common time signature. The melody begins with a quarter note G4, followed by a quarter rest, quarter notes A4, B4, and C5. It continues with a quarter note D5, a quarter note E5, and a quarter note F5. The piece concludes with a quarter note G5, a quarter note F5, and a quarter note E5. A dynamic marking of *f* (forte) is placed below the first note.

BK=3

Musical staff BK=3, starting with a treble clef and a common time signature. The melody begins with a quarter note G4, followed by quarter notes A4, B4, and C5. It continues with a quarter note D5, a quarter note E5, and a quarter note F5. The piece concludes with a quarter note G5, a quarter note F5, and a quarter note E5. Dynamic markings of *p* (piano) and *f* (forte) are placed below the first and last notes, respectively.

BK=4

Musical staff BK=4, starting with a treble clef and a common time signature. The melody begins with a quarter note G4, followed by quarter notes A4, B4, and C5. It continues with a quarter note D5, a quarter note E5, and a quarter note F5. The piece concludes with a quarter note G5, a quarter note F5, and a quarter note E5. A dynamic marking of *p* (piano) is placed below the first note.

BK=5

Musical staff BK=5, starting with a treble clef and a common time signature. The melody begins with a quarter note G4, followed by quarter notes A4, B4, and C5. It continues with a quarter note D5, a quarter note E5, and a quarter note F5. The piece concludes with a quarter note G5, a quarter note F5, and a quarter note E5. A dynamic marking of *f* (forte) is placed below the first note.

BK=6

Musical staff BK=6, starting with a treble clef and a common time signature. The melody begins with a quarter note G4, followed by quarter notes A4, B4, and C5. It continues with a quarter note D5, a quarter note E5, and a quarter note F5. The piece concludes with a quarter note G5, a quarter note F5, and a quarter note E5. A dynamic marking of *f* (forte) is placed below the first note.

BK=7

Musical staff BK=7, starting with a treble clef and a common time signature. The melody begins with a quarter note G4, followed by quarter notes A4, B4, and C5. It continues with a quarter note D5, a quarter note E5, and a quarter note F5. The piece concludes with a quarter note G5, a quarter note F5, and a quarter note E5. A dynamic marking of *f* (forte) is placed below the first note.

BK=8

Musical staff BK=8, starting with a treble clef and a common time signature. The melody begins with a quarter note G4, followed by quarter notes A4, B4, and C5. It continues with a quarter note D5, a quarter note E5, and a quarter note F5. The piece concludes with a quarter note G5, a quarter note F5, and a quarter note E5. A dynamic marking of *p* (piano) is placed below the first note.

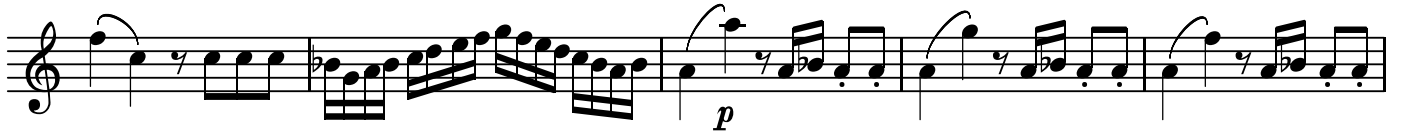
BK=9

Musical staff BK=9, starting with a treble clef and a common time signature. The melody begins with a quarter note G4, followed by quarter notes A4, B4, and C5. It continues with a quarter note D5, a quarter note E5, and a quarter note F5. The piece concludes with a quarter note G5, a quarter note F5, and a quarter note E5. Dynamic markings of *f* (forte) and *p* (piano) are placed below the first and last notes, respectively.

BK=10



BK=11



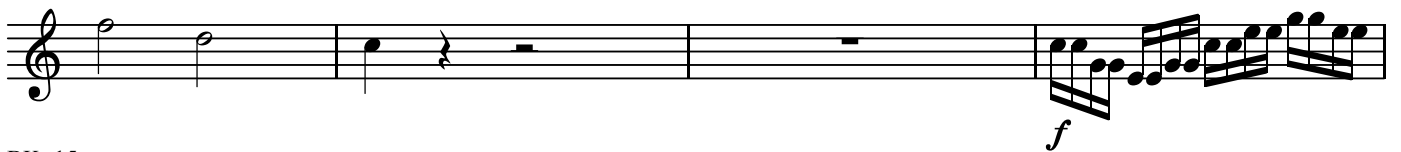
BK=12



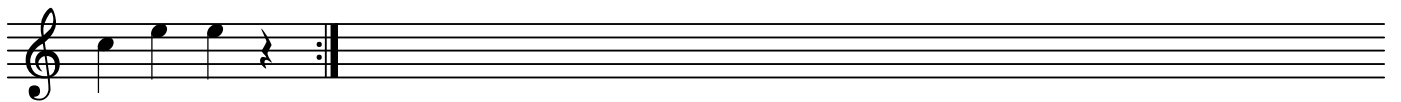
BK=13



BK=14



BK=15



DIVERTIMENT KV113

1.Allegro

W.A.Mozart

BK=1

Musical staff BK=1, treble clef, C major, 2/4 time. The staff begins with a dynamic marking of *A* (Allegro). The melody consists of eighth and sixteenth notes, ending with a quarter rest.

BK=2

Musical staff BK=2, treble clef, C major, 2/4 time. The staff begins with a quarter rest, followed by eighth notes, and ends with a dynamic marking of *f* (forte).

BK=3

Musical staff BK=3, treble clef, D major, 2/4 time. The staff features a complex rhythmic pattern with sixteenth notes and a dynamic marking of *p* (piano) in the middle, and *f* (forte) at the end.

BK=4

Musical staff BK=4, treble clef, D major, 2/4 time. The staff features a complex rhythmic pattern with sixteenth notes and a dynamic marking of *p* (piano) at the beginning.

BK=5

Musical staff BK=5, treble clef, D major, 2/4 time. The staff features a simple melody with a dynamic marking of *f* (forte) in the middle.

BK=6

Musical staff BK=6, treble clef, D major, 2/4 time. The staff features a complex rhythmic pattern with sixteenth notes and a dynamic marking of *f* (forte) at the end.

BK=7

Musical staff BK=7, treble clef, D major, 2/4 time. The staff features a complex rhythmic pattern with sixteenth notes and a dynamic marking of *f* (forte) in the middle.

BK=8

Musical staff BK=8, treble clef, D major, 2/4 time. The staff features a complex rhythmic pattern with sixteenth notes and a dynamic marking of *p* (piano) in the middle.

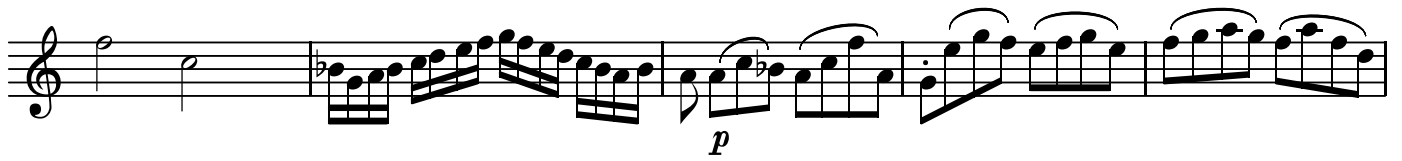
BK=9

Musical staff BK=9, treble clef, D major, 2/4 time. The staff features a complex rhythmic pattern with sixteenth notes and dynamic markings of *f* (forte) and *p* (piano).

BK=10



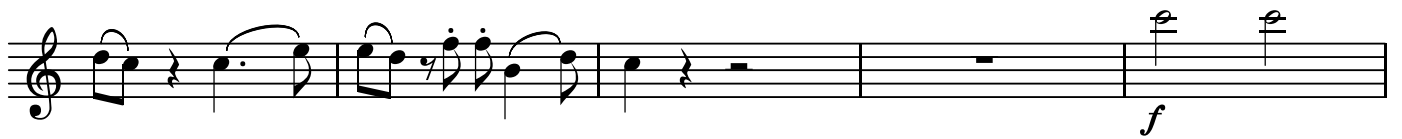
BK=11



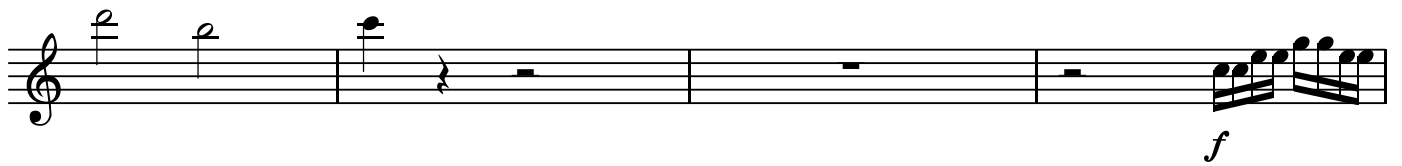
BK=12



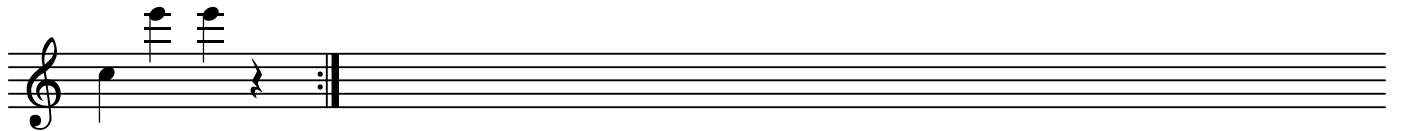
BK=13



BK=14



BK=15

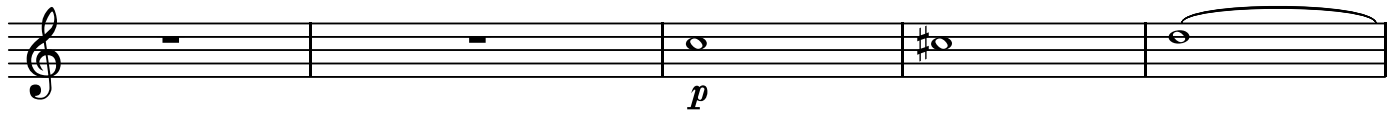




BK=10



BK=11



BK=12



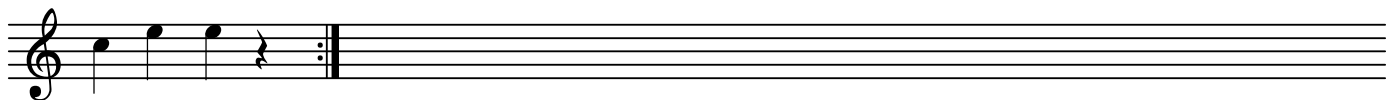
BK=13



BK=14



BK=15









DIVERTIMENT KV113  
1.Allegro

W.A.Mozart

BK=1

Musical staff for BK=1, treble clef, C major, 3/4 time. It begins with a whole note G4, followed by a whole note A4. The second measure contains a sixteenth-note triplet starting on G4, marked *p*. This is followed by a series of sixteenth-note runs: a descending run from G4 to E4, an ascending run from E4 to G4, and another descending run from G4 to E4.

T3  
BK=2

Musical staff for BK=2, treble clef, C major, 3/4 time. It starts with a whole rest, followed by a whole note G4. The second measure contains a whole rest. The third measure begins with a sixteenth-note triplet starting on G4, marked *f*, followed by a series of sixteenth-note runs: a descending run from G4 to E4, an ascending run from E4 to G4, and another descending run from G4 to E4.

BK=3

Musical staff for BK=3, treble clef, C major, 3/4 time. It begins with a sixteenth-note triplet starting on G4, marked *p*. This is followed by a series of sixteenth-note runs: a descending run from G4 to E4, an ascending run from E4 to G4, and another descending run from G4 to E4. The staff concludes with a whole note G4 with a sharp sign, followed by a whole note A4.

BK=4

Musical staff for BK=4, treble clef, C major, 3/4 time. It consists of a continuous sixteenth-note run starting on G4, marked *p*. The run descends from G4 to E4, ascends from E4 to G4, and then descends again from G4 to E4.

BK=5

Musical staff for BK=5, treble clef, C major, 3/4 time. It starts with a whole rest, followed by a whole note G4, marked *f*. The second measure contains a whole note A4. The third measure contains a whole note G4. The fourth measure contains a whole note F4. The fifth measure contains a whole note E4. The sixth measure contains a whole note D4.

BK=6

Musical staff for BK=6, treble clef, C major, 3/4 time. It begins with a sixteenth-note triplet starting on G4, marked *p*. This is followed by a series of sixteenth-note runs: a descending run from G4 to E4, an ascending run from E4 to G4, and another descending run from G4 to E4. The staff concludes with a whole note G4 with a sharp sign, followed by a whole note A4, marked *f*.

BK=7

Musical staff for BK=7, treble clef, C major, 3/4 time. It begins with a sixteenth-note triplet starting on G4, marked *p*. This is followed by a series of sixteenth-note runs: a descending run from G4 to E4, an ascending run from E4 to G4, and another descending run from G4 to E4. The staff concludes with a whole note G4, marked *f*.

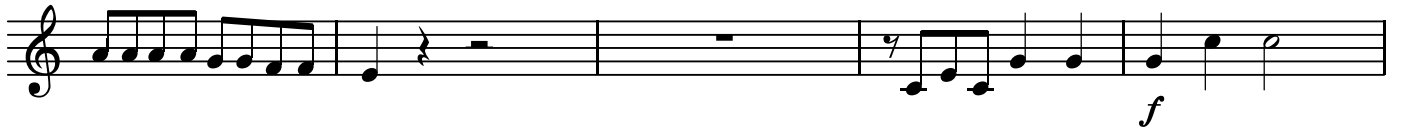
BK=8

Musical staff for BK=8, treble clef, C major, 3/4 time. It starts with a whole rest, followed by a whole note G4. The second measure contains a whole rest. The third measure begins with a sixteenth-note triplet starting on G4, marked *p*, followed by a series of sixteenth-note runs: a descending run from G4 to E4, an ascending run from E4 to G4, and another descending run from G4 to E4.

BK=9

Musical staff for BK=9, treble clef, C major, 3/4 time. It begins with a whole note G4, marked *f*. The second measure contains a whole note A4. The third measure contains a whole note G4. The fourth measure contains a whole note F4. The fifth measure contains a whole note E4. The sixth measure contains a whole note D4. The seventh measure contains a whole note C4. The eighth measure contains a whole note B3. The ninth measure contains a whole note A3. The tenth measure contains a whole note G3.

BK=10



BK=11



BK=12



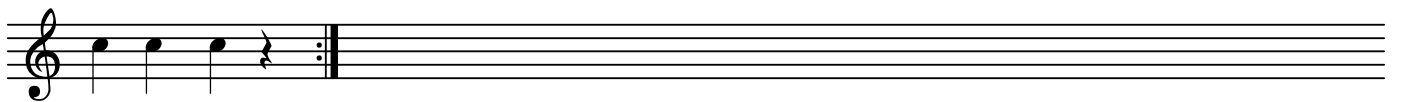
BK=13



BK=14

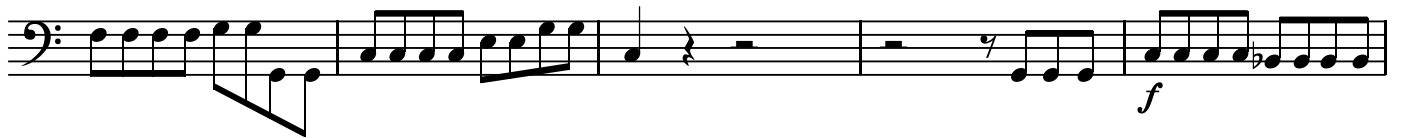


BK=15





BK=10



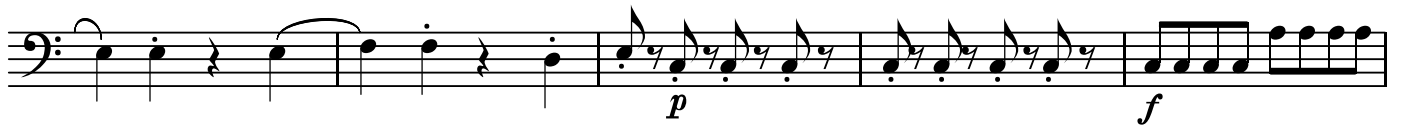
BK=11



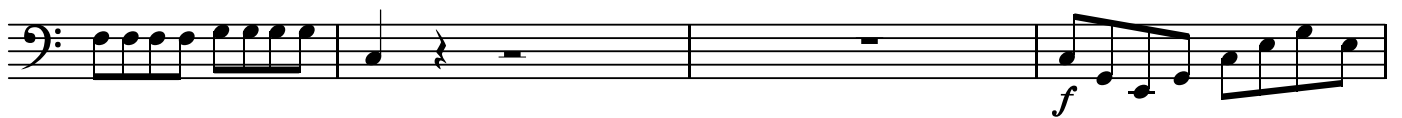
BK=12



BK=13



BK=14



BK=15

