

BK=1

Musical staff for BK=1, starting with a treble clef, a key signature of one flat (B-flat), and a 4/4 time signature. The staff contains a series of eighth and sixteenth notes, with a dynamic marking of *f* (forte) at the beginning. A small 'S' is written below the first few notes.

BK=2

Musical staff for BK=2, continuing the melody with various note values and rests. It includes a repeat sign with first and second endings.

BK=3

Musical staff for BK=3, featuring a triplet of eighth notes marked with a '3' and a bracket. The word *Trio* is written above the staff, and a dynamic marking of *p* (piano) is below. It includes a repeat sign with first and second endings.

BK=4

Musical staff for BK=4, continuing the melodic line with eighth and sixteenth notes, including a repeat sign with first and second endings.

BK=5

Musical staff for BK=5, concluding the piece with a final melodic phrase and a repeat sign with first and second endings.

A1

No. 5

BK=1



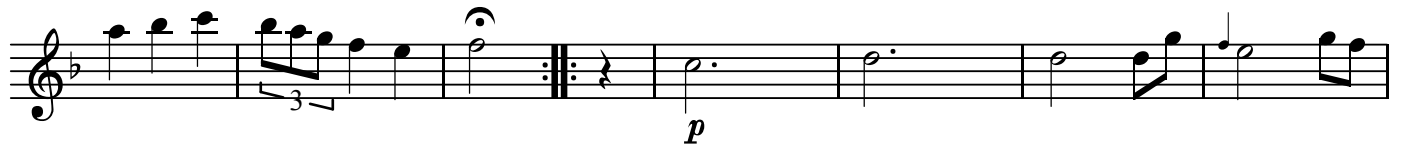
Musical staff for BK=1, starting with a treble clef, a key signature of one flat (B-flat), and a 3/4 time signature. The music features a series of eighth-note patterns, some with beamed sixteenth notes, and a dynamic marking of *f* (forte).

BK=2



Musical staff for BK=2, continuing the piece with a treble clef, one flat key signature, and 3/4 time signature. It includes a repeat sign and a dynamic marking of *f*.

BK=3



Musical staff for BK=3, featuring a treble clef, one flat key signature, and 3/4 time signature. It includes a triplet of eighth notes, a repeat sign, and a dynamic marking of *p* (piano).

BK=4



Musical staff for BK=4, continuing with a treble clef, one flat key signature, and 3/4 time signature. It includes a repeat sign.

BK=5



Musical staff for BK=5, concluding the piece with a treble clef, one flat key signature, and 3/4 time signature. It includes a repeat sign.

A2

No. 5

BK=1

Musical staff for BK=1, starting with a treble clef and a key signature of one flat. The first measure contains a whole rest. The second measure begins with a dynamic marking of *f* and features a half note with a slur extending to the next measure. The staff continues with eighth notes and concludes with a sixteenth-note triplet.

BK=2

Musical staff for BK=2, continuing the melody with eighth notes and quarter notes. It includes a repeat sign and a fermata over a half note.

BK=3

Musical staff for BK=3, featuring a dynamic marking of *p* and a snare drum symbol (*Sn*) above a half note. The staff contains eighth notes and quarter notes.

BK=4

Musical staff for BK=4, consisting of eighth notes and quarter notes, with a repeat sign.

BK=5

Musical staff for BK=5, featuring eighth notes and quarter notes, ending with a repeat sign.

T

No. 5

BK=1

Musical staff for BK=1, starting with a treble clef and a key signature of one flat. The staff contains a series of notes, including a half note with a fermata and a dynamic marking of *f*.

BK=2

Musical staff for BK=2, continuing the melody with various note values and a repeat sign.

BK=3

Musical staff for BK=3, featuring a half note with a fermata and a dynamic marking of *p*.

BK=4

Musical staff for BK=4, showing a sequence of eighth notes followed by a repeat sign and a whole rest.

BK=5

Musical staff for BK=5, consisting of whole rests followed by a final measure with a half note and a fermata.

B

No. 5

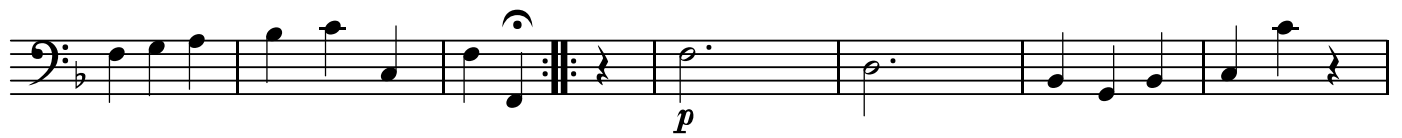
BK=1



BK=2



BK=3



BK=4



BK=5

