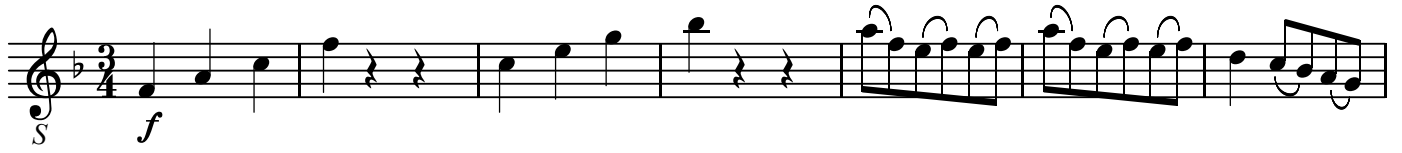


S

No. 16

BK=1



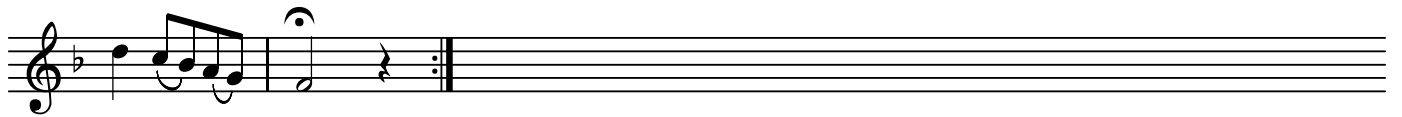
Musical staff for BK=1, featuring a treble clef, a key signature of one flat (B-flat), and a 3/4 time signature. The staff begins with a forte (*f*) dynamic marking and a 'S' marking below the first measure. The melody consists of quarter and eighth notes, with a series of slurred eighth-note patterns in the latter half of the staff.

BK=2



Musical staff for BK=2, featuring a treble clef, a key signature of one flat (B-flat), and a 3/4 time signature. The staff begins with a piano (*p*) dynamic marking. It includes a repeat sign after the first measure, followed by a series of slurred eighth-note patterns. A forte (*f*) dynamic marking is placed below the staff towards the end.

BK=3

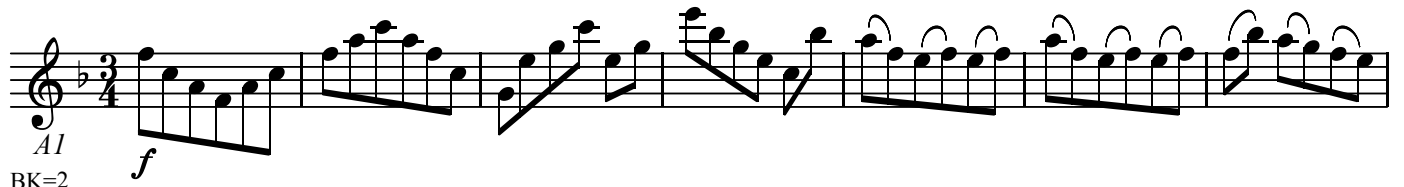


Musical staff for BK=3, featuring a treble clef, a key signature of one flat (B-flat), and a 3/4 time signature. The staff begins with a series of slurred eighth-note patterns, followed by a repeat sign and a final measure.

A1

No. 16

BK=1



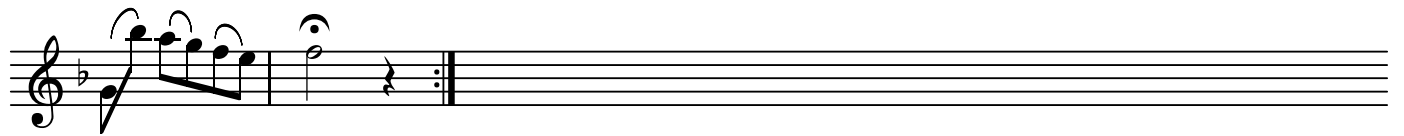
Musical staff for BK=1, starting with a treble clef, a key signature of one flat (B-flat), and a 3/4 time signature. The staff contains a continuous melodic line with slurs and accents. The first measure is marked with *f* (forte).

BK=2



Musical staff for BK=2, continuing the melodic line. It features a repeat sign in the first measure, followed by a dynamic marking of *p* (piano) and a final *f* (forte) marking.

BK=3



Musical staff for BK=3, showing the final few notes of the piece, including a repeat sign and a fermata over the final note.

A2

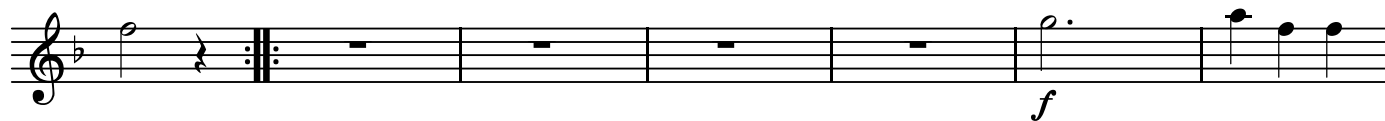
No. 16

BK=1



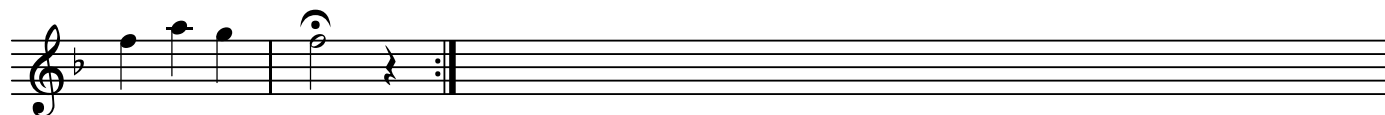
Musical notation for BK=1, featuring a treble clef, a key signature of one flat (B-flat), and a 3/4 time signature. The notation includes a dynamic marking of *f* (forte) and a performance instruction *A2*. The melody consists of eighth and quarter notes with rests.

BK=2



Musical notation for BK=2, featuring a treble clef, a key signature of one flat (B-flat), and a 3/4 time signature. The notation includes a dynamic marking of *f* (forte) and a repeat sign. The melody consists of quarter notes, a dotted quarter note, and eighth notes.

BK=3



Musical notation for BK=3, featuring a treble clef, a key signature of one flat (B-flat), and a 3/4 time signature. The notation includes a repeat sign. The melody consists of quarter notes and a half note.

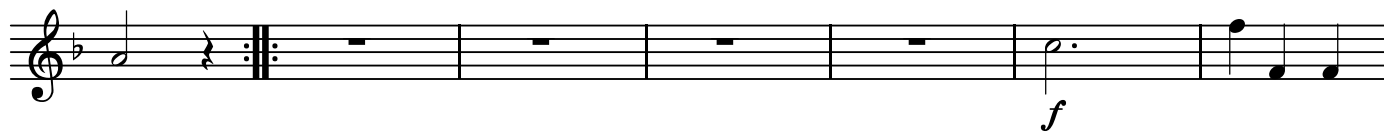
T

No. 16

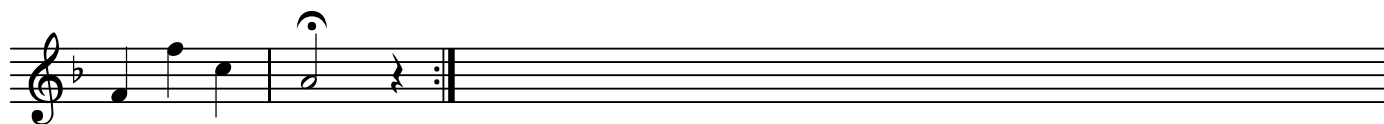
BK=1



BK=2



BK=3



B

No. 16

BK=1



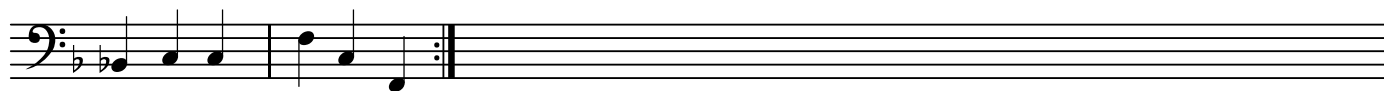
Musical staff for BK=1, bass clef, 3/4 time signature, key signature of one flat. The staff contains 8 measures of music. The first measure has a dynamic marking *f*. The second measure has a dynamic marking *B*. The music consists of quarter and eighth notes.

BK=2



Musical staff for BK=2, bass clef, 3/4 time signature, key signature of one flat. The staff contains 8 measures of music. The first measure has a dynamic marking *p*. The seventh measure has a dynamic marking *f*. The music consists of quarter and eighth notes.

BK=3



Musical staff for BK=3, bass clef, 3/4 time signature, key signature of one flat. The staff contains 4 measures of music. The music consists of quarter and eighth notes.