

QUARTETT KV80

1. Adagio

BK=1

Adagio

Musical staff for BK=1, starting with the tempo marking 'Adagio'. The staff contains a melodic line in treble clef with a key signature of one sharp (F#) and a 3/4 time signature. It begins with a trill (tr) on a dotted quarter note, followed by a series of eighth and quarter notes, ending with a sixteenth-note flourish.

BK=2

Musical staff for BK=2, featuring a complex rhythmic pattern of sixteenth and thirty-second notes, including a trill (tr) on a dotted quarter note.

BK=3

Musical staff for BK=3, showing a series of eighth-note patterns and a final flourish.

BK=4

Musical staff for BK=4, featuring a long, sustained melodic line with a trill (tr) on a dotted quarter note.

BK=5

Musical staff for BK=5, containing intricate sixteenth-note passages with triplets (3) and a sextuplet (6), along with a trill (tr).

BK=6

Musical staff for BK=6, featuring a melodic line with a trill (tr) on a dotted quarter note and a final flourish.

BK=7

Musical staff for BK=7, starting with a double bar line and a repeat sign, followed by a melodic line with a trill (tr) on a dotted quarter note.

BK=8

Musical staff for BK=8, featuring a melodic line with a trill (tr) on a dotted quarter note and a final flourish.

BK=9

Musical staff for BK=9, showing a melodic line with a trill (tr) on a dotted quarter note and a final flourish.

BK=10

Musical staff for BK=10, featuring a melodic line with a trill (tr) on a dotted quarter note and a final flourish.

BK=11



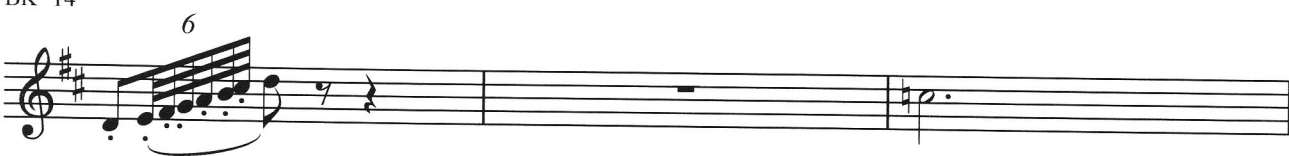
BK=12



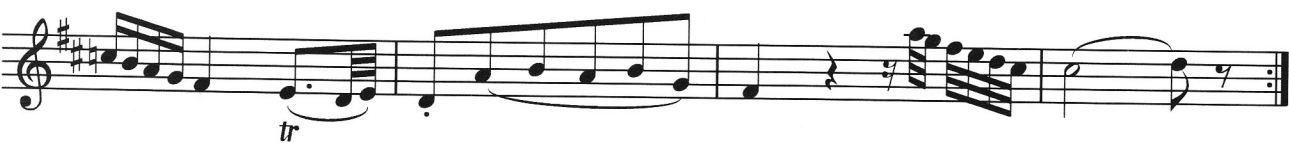
BK=13



BK=14



BK=15



QUARTETT KV80

1. Adagio

BK=1

Musical staff for BK=1, starting with a treble clef, key signature of two sharps (F# and C#), and a 3/4 time signature. The staff contains a series of notes, including a long note with a fermata, followed by a melodic line with eighth notes and a final flourish.

BK=2

Musical staff for BK=2, continuing the melodic line with eighth notes and a trill (tr) on a note.

BK=3

Musical staff for BK=3, featuring a melodic line with eighth notes and triplets (3) marked with a '7' above them.

BK=4

Musical staff for BK=4, showing a melodic line with eighth notes and a trill (tr) on a note.

BK=5

Musical staff for BK=5, featuring a melodic line with eighth notes and a sixteenth-note flourish (6) at the end.

BK=6

Musical staff for BK=6, showing a melodic line with eighth notes and a trill (tr) on a note.

BK=7

Musical staff for BK=7, featuring a melodic line with eighth notes and a trill (tr) on a note.

BK=8

Musical staff for BK=8, showing a melodic line with eighth notes and triplets (3) marked with a '3' above them.

BK=9

Musical staff for BK=9, featuring a melodic line with eighth notes and a trill (tr) on a note.

BK=10

Musical staff for BK=10, showing a melodic line with eighth notes and a trill (tr) on a note.

BK=11

Musical notation for BK=11, featuring a treble clef, a key signature of two sharps (F# and C#), and a 3/4 time signature. The piece begins with a half note G4, followed by a half note A4. The melody then descends through a series of eighth notes: G4, F#4, E4, D4, C#4, B3, A3, G3, F#3, E3, D3, C#3, B2, A2, G2. The notation includes slurs over the first two notes and the final eighth-note run. Fingering numbers 3, 4, 3, 4, 3, 4 are indicated below the notes of the eighth-note run.

BK=12

Musical notation for BK=12, featuring a treble clef, a key signature of two sharps (F# and C#), and a 3/4 time signature. The piece begins with a half note G4, followed by a half note A4. The melody then descends through a series of eighth notes: G4, F#4, E4, D4, C#4, B3, A3, G3, F#3, E3, D3, C#3, B2, A2, G2. The notation includes slurs over the first two notes and the final eighth-note run.

BK=13

Musical notation for BK=13, featuring a treble clef, a key signature of two sharps (F# and C#), and a 3/4 time signature. The piece begins with a quarter note G4, followed by quarter notes A4, B4, C#5, D5, E5, F#5, G5. The melody then descends through a series of quarter notes: F#4, E4, D4, C#4, B3, A3, G3, F#3, E3, D3, C#3, B2, A2, G2. The notation includes slurs over the eighth-note run and the final quarter note. A trill (tr) is indicated above the final note G2.

BK=14

Musical notation for BK=14, featuring a treble clef, a key signature of two sharps (F# and C#), and a 3/4 time signature. The piece begins with a quarter note G4, followed by quarter notes A4, B4, C#5, D5, E5, F#5, G5. The melody then descends through a series of quarter notes: F#4, E4, D4, C#4, B3, A3, G3, F#3, E3, D3, C#3, B2, A2, G2. The notation includes slurs over the eighth-note run and the final quarter note. A trill (tr) is indicated above the final note G2.

BK=15

Musical notation for BK=15, featuring a treble clef, a key signature of two sharps (F# and C#), and a 3/4 time signature. The piece begins with a quarter note G4, followed by quarter notes A4, B4, C#5, D5, E5, F#5, G5. The melody then descends through a series of quarter notes: F#4, E4, D4, C#4, B3, A3, G3, F#3, E3, D3, C#3, B2, A2, G2. The notation includes slurs over the eighth-note run and the final quarter note. A trill (tr) is indicated above the final note G2.

T

QUARTETT KV80

1. Adagio

BK=1

Musical staff for BK=1, starting with a treble clef, a key signature of one sharp (F#), and a 3/4 time signature. The staff contains a sequence of eighth notes, followed by a quarter note and a half note, ending with a fermata.

BK=2

Musical staff for BK=2, starting with a treble clef, a key signature of one sharp (F#), and a 3/4 time signature. The staff contains a sequence of eighth notes, followed by a quarter note and a half note, ending with a fermata.

BK=3

Musical staff for BK=3, starting with a treble clef, a key signature of one sharp (F#), and a 3/4 time signature. The staff contains a sequence of eighth notes, followed by a quarter note and a half note, ending with a fermata.

BK=4

Musical staff for BK=4, starting with a treble clef, a key signature of one sharp (F#), and a 3/4 time signature. The staff contains a sequence of eighth notes, followed by a quarter note and a half note, ending with a fermata.

BK=5

Musical staff for BK=5, starting with a treble clef, a key signature of one sharp (F#), and a 3/4 time signature. The staff contains a sequence of eighth notes, followed by a quarter note and a half note, ending with a fermata.

BK=6

Musical staff for BK=6, starting with a treble clef, a key signature of one sharp (F#), and a 3/4 time signature. The staff contains a sequence of eighth notes, followed by a quarter note and a half note, ending with a fermata. A sixteenth-note figure is marked with a '6' above it.

BK=7

Musical staff for BK=7, starting with a treble clef, a key signature of one sharp (F#), and a 3/4 time signature. The staff contains a sequence of eighth notes, followed by a quarter note and a half note, ending with a fermata.

BK=8

Musical staff for BK=8, starting with a treble clef, a key signature of one sharp (F#), and a 3/4 time signature. The staff contains a sequence of eighth notes, followed by a quarter note and a half note, ending with a fermata. Triplet markings are present below the staff.

BK=9

Musical staff for BK=9, starting with a treble clef, a key signature of one sharp (F#), and a 3/4 time signature. The staff contains a sequence of eighth notes, followed by a quarter note and a half note, ending with a fermata.

BK=10

Musical staff for BK=10, starting with a treble clef, a key signature of one sharp (F#), and a 3/4 time signature. The staff contains a sequence of eighth notes, followed by a quarter note and a half note, ending with a fermata.

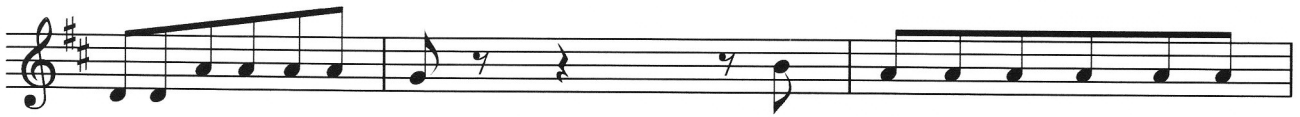
BK=11



BK=12



BK=13



BK=14



BK=15



B

QUARTETT KV80

1. Adagio

BK=1



BK=2



BK=3



BK=4



BK=5



BK=6



BK=7



BK=8



BK=9



BK=10



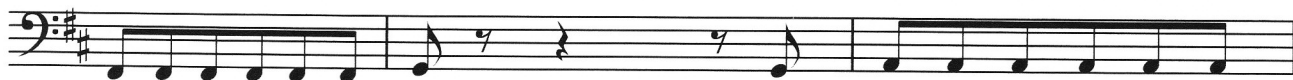
BK=11



BK=12



BK=13



BK=14



BK=15

