

S

魔笛
第9番 僧侶の行進

BK=1 Moderato



Musical notation for BK=1, starting with a treble clef, a key signature of one flat (B-flat), and a common time signature (C). The notation includes a series of notes and rests, with a dynamic marking of *sf* (sforzando) under the first measure.

BK=2




Musical notation for BK=2, continuing the melody with various note values and rests, including a repeat sign.

BK=3



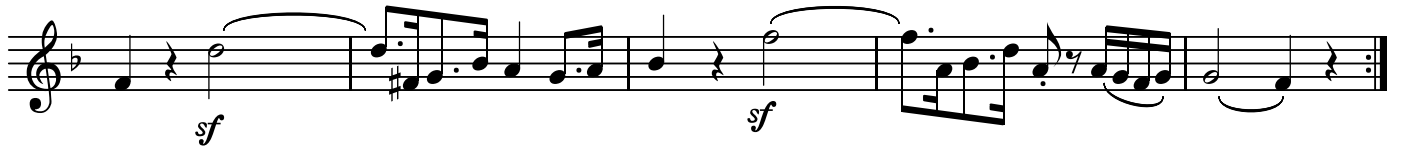
Musical notation for BK=3, featuring a sequence of notes and rests, ending with a sharp sign (#) on the final note.

BK=4



Musical notation for BK=4, including a dynamic marking of *sf* (sforzando) under the final measure.

BK=5

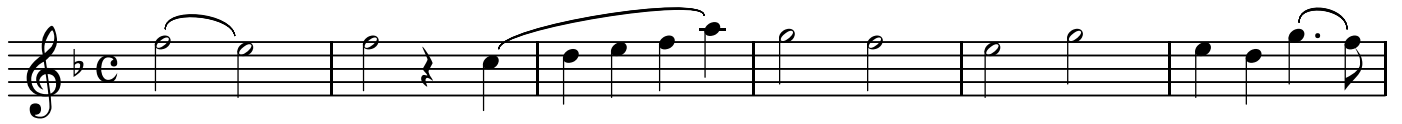


Musical notation for BK=5, featuring two dynamic markings of *sf* (sforzando) under the first and third measures.

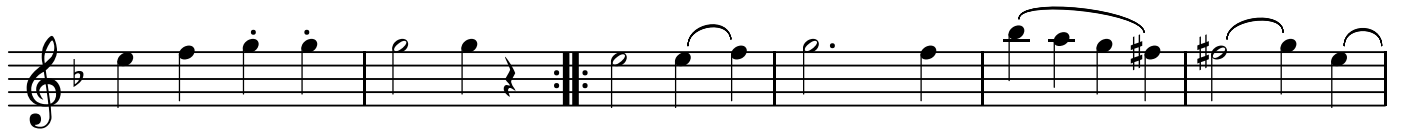
A1

魔笛
第9番 僧侶の行進

BK=1



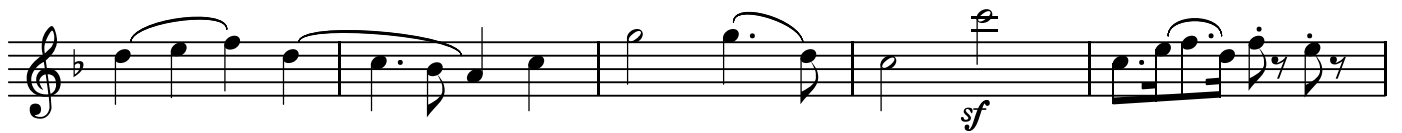
A1
BK=2



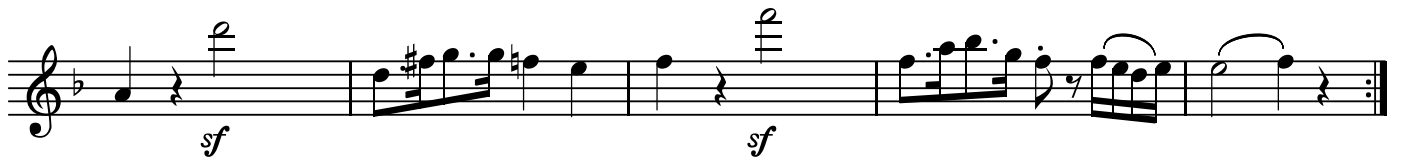
BK=3



BK=4



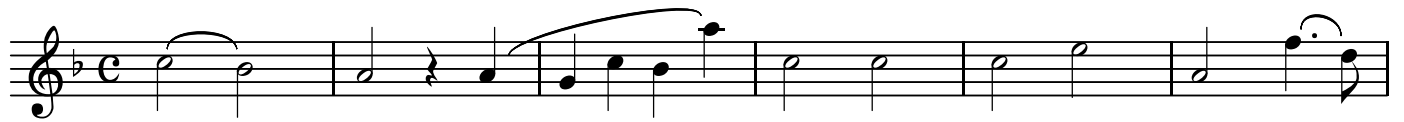
BK=5



A2

魔笛
第9番 僧侶の行進

BK=1



A2
BK=2



BK=3



BK=4



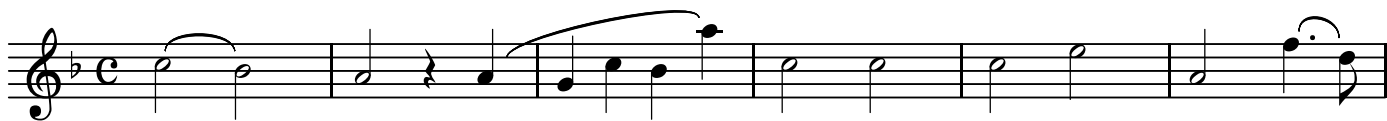
BK=5



T

魔笛
第9番 僧侶の行進

BK=1



T
BK=2



BK=3



BK=4



BK=5



B

魔笛
第9番 僧侶の行進

BK=1



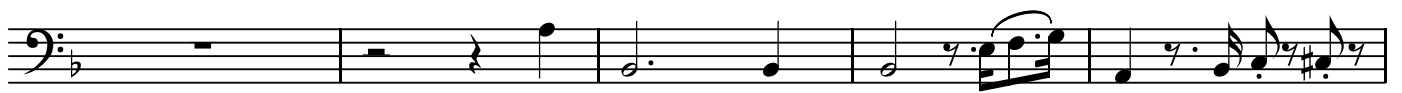
BK=2



BK=3



BK=4



BK=5

