

魔笛
第8番 終曲-7 こしゃくなる奴め

BK=1 Allegro



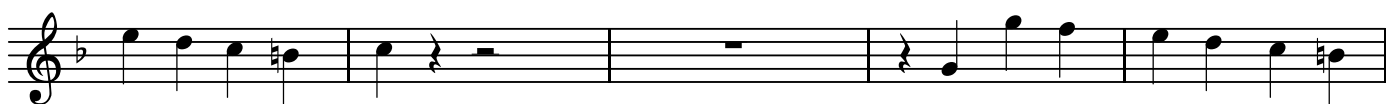
BK=2



BK=3



BK=4



BK=5



BK=6



BK=7



BK=8



BK=9



BK=10



BK=11



BK=12



BK=13



BK=14



A1


魔笛
第8番 終曲-7 こしゃくなる奴め

BK=1



Musical notation for BK=1, starting with a treble clef, a key signature of one flat (B-flat), and a common time signature (C). The notation includes a dynamic marking of *f* (forte) and a *p* (piano) marking. The melody consists of a series of eighth notes with slurs, followed by a series of sixteenth notes with slurs.

BK=2



Musical notation for BK=2, continuing the melody from BK=1. It features a series of eighth notes with slurs, followed by a series of sixteenth notes with slurs, and then a series of quarter notes with slurs.

BK=3



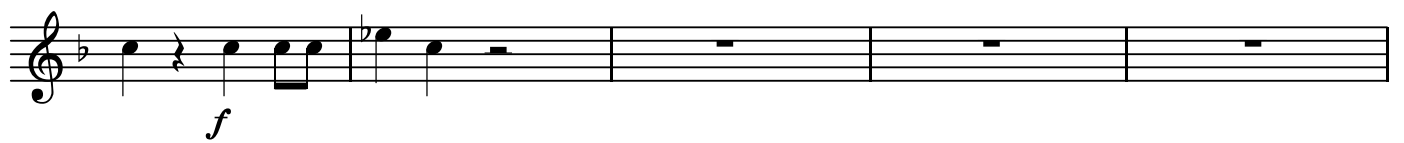
Musical notation for BK=3, continuing the melody from BK=2. It features a series of quarter notes with slurs, followed by a series of eighth notes with slurs, and then a series of quarter notes with slurs.

BK=4



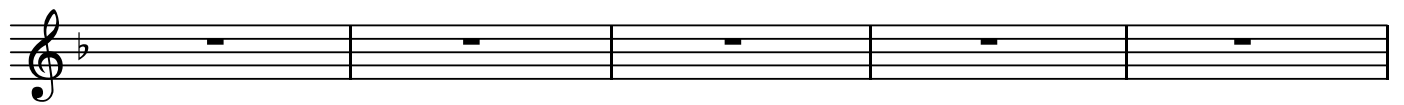
Musical notation for BK=4, continuing the melody from BK=3. It features a series of quarter notes with slurs, followed by a series of eighth notes with slurs, and then a series of quarter notes with slurs.

BK=5



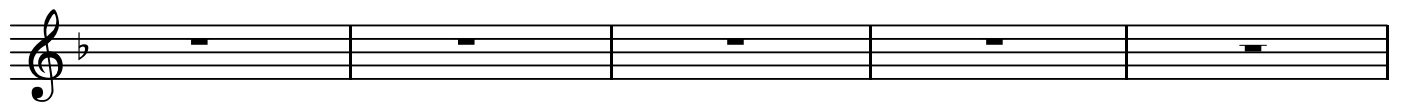
Musical notation for BK=5, continuing the melody from BK=4. It features a series of quarter notes with slurs, followed by a series of eighth notes with slurs, and then a series of quarter notes with slurs. A dynamic marking of *f* (forte) is present.

BK=6



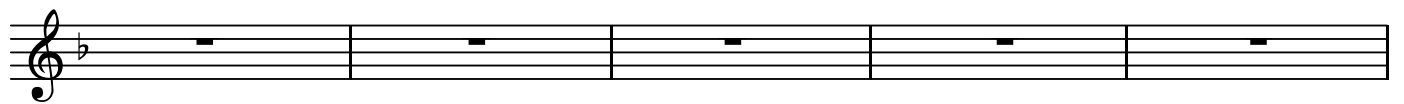
Musical notation for BK=6, consisting of five measures of whole rests.

BK=7



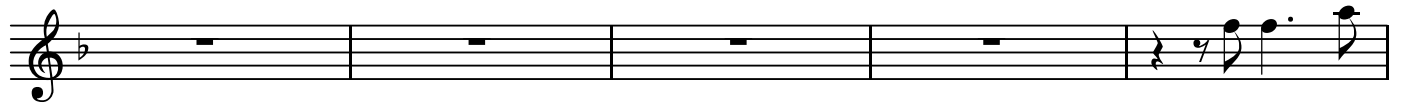
Musical notation for BK=7, consisting of five measures of whole rests.

BK=8



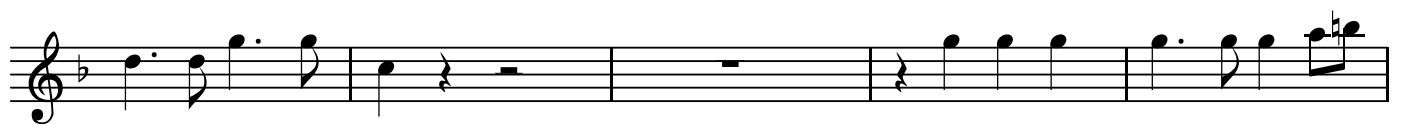
Musical notation for BK=8, consisting of five measures of whole rests.

BK=9



Musical notation for BK=9, consisting of five measures of whole rests, followed by a series of eighth notes with slurs.

BK=10



Musical notation for BK=10, continuing the melody from BK=9. It features a series of quarter notes with slurs, followed by a series of eighth notes with slurs, and then a series of quarter notes with slurs.

魔笛
第8番 終曲-7 こしゃくなる奴め

BK=1

Musical notation for BK=1, starting with a treble clef, a key signature of one flat (B-flat), and a common time signature (C). The first measure is marked with a forte dynamic (*f*), and the second measure is marked with a piano dynamic (*p*). The notation includes quarter notes, eighth notes, and half notes.

BK=2

Musical notation for BK=2, continuing the piece with eighth and sixteenth note patterns.

BK=3

Musical notation for BK=3, featuring a series of eighth notes with slurs.

BK=4

Musical notation for BK=4, showing a continuation of the eighth-note patterns.

BK=5

Musical notation for BK=5, featuring a sequence of sixteenth-note runs. Dynamics alternate between *f* and *p*.

BK=6

Musical notation for BK=6, continuing the sixteenth-note runs with a piano (*p*) dynamic.

BK=7

Musical notation for BK=7, featuring sixteenth-note runs with *fp* dynamics.

BK=8

Musical notation for BK=8, showing sixteenth-note runs with *fp* dynamics.

BK=9

Musical notation for BK=9, continuing the sixteenth-note patterns.

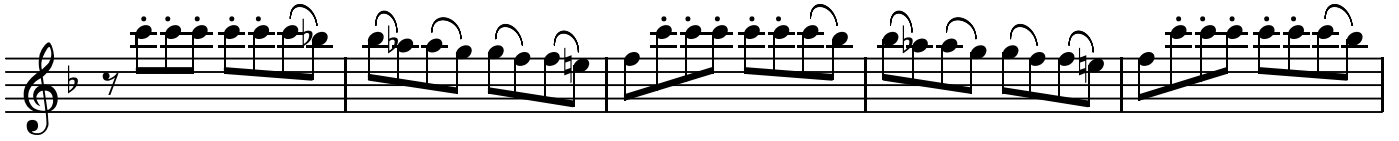
BK=10

Musical notation for BK=10, the final section of the piece, featuring sixteenth-note runs.

BK=11



BK=12



BK=13



BK=14



BK=11



BK=12



BK=13



BK=14



BK=11



BK=12



BK=13



BK=14

