

魔笛
第7番 恋を知るほどの殿方には

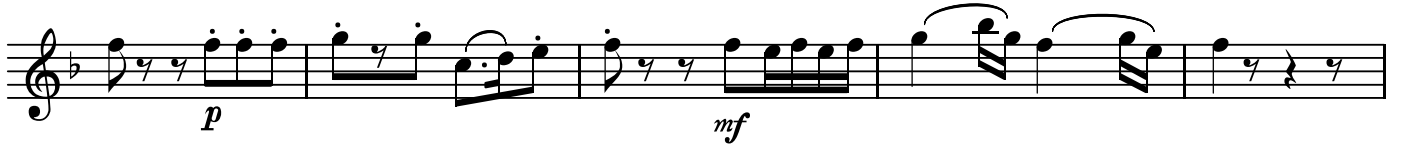
BK=1 Andantino



BK=2



BK=3



BK=4



BK=5



BK=6



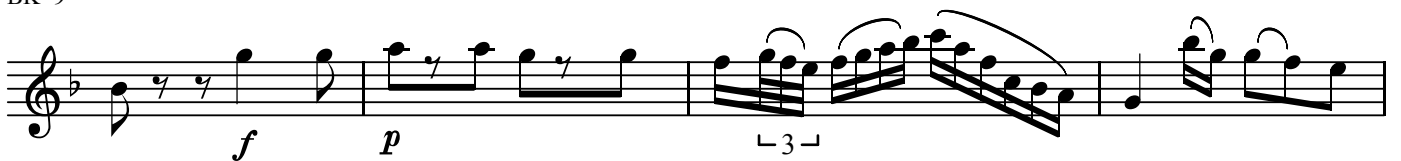
BK=7



BK=8



BK=9



BK=10



A1

魔笛
第7番 恋を知るほどの殿方には

BK=1

Musical staff for BK=1, starting with a treble clef, a key signature of one flat (B-flat), and a 6/8 time signature. The staff contains a melodic line with various note values and rests. A dynamic marking of *p* is placed below the first measure.

BK=2

Musical staff for BK=2, continuing the melodic line from the previous staff.

BK=3

Musical staff for BK=3, featuring a melodic line with a dynamic marking of *p* at the beginning and *mf* later in the staff.

BK=4

Musical staff for BK=4, continuing the melodic line.

BK=5

Musical staff for BK=5, continuing the melodic line.

BK=6

Musical staff for BK=6, featuring a melodic line with a dynamic marking of *p* and *f*.

BK=7

Musical staff for BK=7, featuring a melodic line with a dynamic marking of *p*.

BK=8

Musical staff for BK=8, featuring a melodic line with dynamic markings of *f* and *p*.

BK=9

Musical staff for BK=9, featuring a melodic line with dynamic markings of *f* and *p*.

BK=10

Musical staff for BK=10, featuring a melodic line with dynamic markings of *cresc.*, *f*, and *p*.

魔笛
第7番 恋を知るほどの殿方には

BK=1



BK=2



BK=3



BK=4



BK=5



BK=6



BK=7



BK=8



BK=9



BK=10



B

魔笛
第7番 恋を知るほどの殿方には

BK=1

First staff of music, bass clef, 6/8 time signature. It begins with a dynamic marking of *p*. The notation includes eighth and sixteenth notes with stems, and some notes have dots above them.

BK=2

Second staff of music, bass clef, 6/8 time signature. It continues the melodic line from the first staff.

BK=3

Third staff of music, bass clef, 6/8 time signature. It features a dynamic marking of *p* at the beginning and *mf* later in the staff.

BK=4

Fourth staff of music, bass clef, 6/8 time signature. It continues the melodic line.

BK=5

Fifth staff of music, bass clef, 6/8 time signature. It continues the melodic line.

BK=6

Sixth staff of music, bass clef, 6/8 time signature. It features dynamic markings of *p* and *f*.

BK=7

Seventh staff of music, bass clef, 6/8 time signature. It features dynamic markings of *p* and *f*.

BK=8

Eighth staff of music, bass clef, 6/8 time signature. It features dynamic markings of *f* and *p*.

BK=9

Ninth staff of music, bass clef, 6/8 time signature. It features dynamic markings of *f* and *p*.

BK=10

Tenth staff of music, bass clef, 6/8 time signature. It features dynamic markings of *cresc.*, *f*, and *p*.