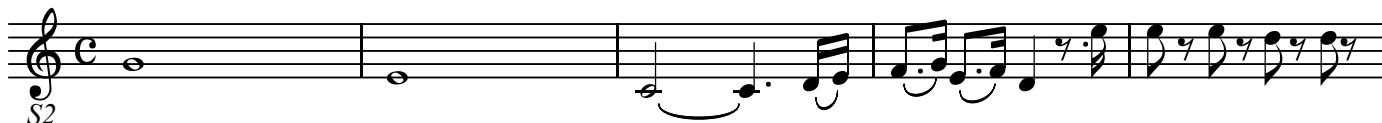


魔笛
第5番-2 三人のかしこき少年が

BK=1



Musical staff 1, starting with a treble clef and a common time signature (C). The first measure contains a whole note G4. The second measure contains a whole note A4. The third measure contains a quarter note B4, a quarter note C5, and a quarter note D5. The fourth measure contains a quarter note E5, a quarter note F5, and a quarter note G5. The fifth measure contains a quarter note G5, a quarter note F5, and a quarter note E5. The sixth measure contains a quarter note D5, a quarter note C5, and a quarter note B4. The seventh measure contains a quarter note A4, a quarter note G4, and a quarter note F4. The eighth measure contains a quarter note E4, a quarter note D4, and a quarter note C4. The label 'S2' is written below the first measure.

BK=2



Musical staff 2, continuing the melody from staff 1. It begins with a quarter note C4, a quarter note D4, and a quarter note E4. The second measure contains a quarter note F4, a quarter note G4, and a quarter note A4. The third measure contains a quarter note B4, a quarter note C5, and a quarter note D5. The fourth measure contains a quarter note E5, a quarter note F5, and a quarter note G5. The fifth measure contains a quarter note G5, a quarter note F5, and a quarter note E5. The sixth measure contains a quarter note D5, a quarter note C5, and a quarter note B4. The seventh measure contains a quarter note A4, a quarter note G4, and a quarter note F4. The eighth measure contains a quarter note E4, a quarter note D4, and a quarter note C4.

BK=3



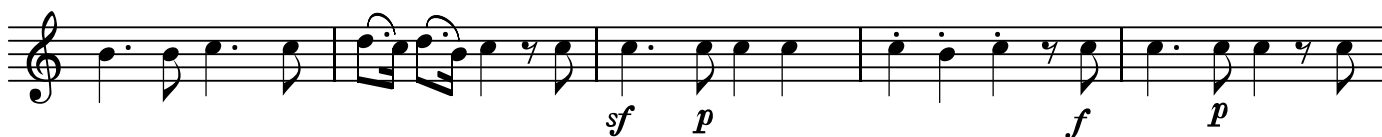
Musical staff 3, continuing the melody. It begins with a quarter note B4, a quarter note C5, and a quarter note D5. The second measure contains a quarter note E5, a quarter note F5, and a quarter note G5. The third measure contains a quarter note G5, a quarter note F5, and a quarter note E5. The fourth measure contains a quarter note D5, a quarter note C5, and a quarter note B4. The fifth measure contains a quarter note A4, a quarter note G4, and a quarter note F4. The sixth measure contains a quarter note E4, a quarter note D4, and a quarter note C4. The seventh measure contains a quarter note B4, a quarter note A4, and a quarter note G4. The eighth measure contains a quarter note F4, a quarter note E4, and a quarter note D4. The label 'sf' is written below the first measure, and 'p' is written below the second measure.

BK=4



Musical staff 4, continuing the melody. It begins with a quarter note C4, a quarter note D4, and a quarter note E4. The second measure contains a quarter note F4, a quarter note G4, and a quarter note A4. The third measure contains a quarter note B4, a quarter note C5, and a quarter note D5. The fourth measure contains a quarter note E5, a quarter note F5, and a quarter note G5. The fifth measure contains a quarter note G5, a quarter note F5, and a quarter note E5. The sixth measure contains a quarter note D5, a quarter note C5, and a quarter note B4. The seventh measure contains a quarter note A4, a quarter note G4, and a quarter note F4. The eighth measure contains a quarter note E4, a quarter note D4, and a quarter note C4. The label 'sf' is written below the sixth measure, and 'p' is written below the seventh measure.

BK=5



Musical staff 5, continuing the melody. It begins with a quarter note B4, a quarter note A4, and a quarter note G4. The second measure contains a quarter note F4, a quarter note E4, and a quarter note D4. The third measure contains a quarter note C4, a quarter note B4, and a quarter note A4. The fourth measure contains a quarter note G4, a quarter note F4, and a quarter note E4. The fifth measure contains a quarter note D4, a quarter note C4, and a quarter note B4. The sixth measure contains a quarter note A4, a quarter note G4, and a quarter note F4. The seventh measure contains a quarter note E4, a quarter note D4, and a quarter note C4. The eighth measure contains a quarter note B4, a quarter note A4, and a quarter note G4. The label 'sf' is written below the fourth measure, 'p' below the fifth, 'f' below the seventh, and 'p' below the eighth.

BK=6



Musical staff 6, continuing the melody. It begins with a quarter note B4, a quarter note A4, and a quarter note G4. The second measure contains a quarter note F4, a quarter note E4, and a quarter note D4. The third measure contains a quarter note C4, a quarter note B4, and a quarter note A4. The fourth measure contains a quarter note G4, a quarter note F4, and a quarter note E4. The fifth measure contains a quarter note D4, a quarter note C4, and a quarter note B4. The sixth measure contains a quarter note A4, a quarter note G4, and a quarter note F4. The seventh measure contains a quarter note E4, a quarter note D4, and a quarter note C4. The eighth measure contains a quarter note B4, a quarter note A4, and a quarter note G4. The label 'f' is written below the first measure, 'p' below the second, 'f' below the third, and 'p' below the fourth.

BK=7



Musical staff 7, concluding the melody. It begins with a quarter note B4, a quarter note A4, and a quarter note G4. The second measure contains a quarter note F4, a quarter note E4, and a quarter note D4. The third measure contains a quarter note C4, a quarter note B4, and a quarter note A4. The fourth measure contains a quarter note G4, a quarter note F4, and a quarter note E4. The fifth measure contains a quarter note D4, a quarter note C4, and a quarter note B4. The sixth measure contains a quarter note A4, a quarter note G4, and a quarter note F4. The seventh measure contains a quarter note E4, a quarter note D4, and a quarter note C4. The eighth measure contains a quarter note B4, a quarter note A4, and a quarter note G4. The staff ends with a double bar line.

A

魔笛
第5番-2 三人のかしこき少年が

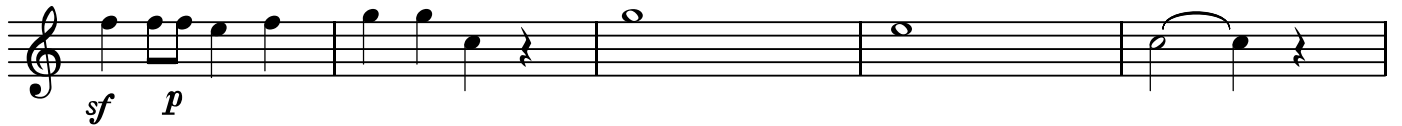
BK=1



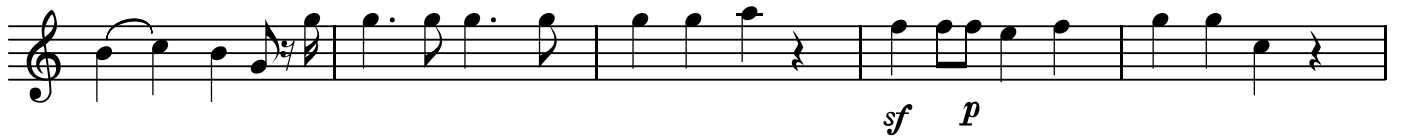
A
BK=2



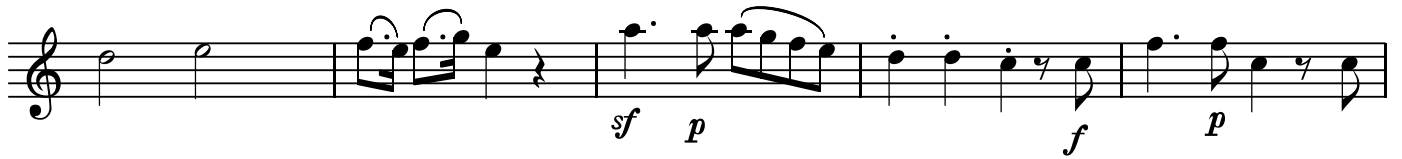
BK=3



BK=4



BK=5



BK=6



BK=7



T

魔笛
第5番-2 三人のかしこき少年が

BK=1

Musical staff BK=1, starting with a treble clef and a common time signature (C). The staff contains a series of eighth and sixteenth notes, with a dynamic marking *T* at the beginning.

BK=2

Musical staff BK=2, continuing the melodic line with eighth and sixteenth notes.

BK=3

Musical staff BK=3, continuing the melodic line with eighth and sixteenth notes.

BK=4

Musical staff BK=4, continuing the melodic line with eighth and sixteenth notes.

BK=5

Musical staff BK=5, continuing the melodic line with eighth and sixteenth notes.

BK=6

Musical staff BK=6, continuing the melodic line with eighth and sixteenth notes, ending with a dynamic marking *p*.

BK=7

Musical staff BK=7, concluding the piece with a final melodic phrase and a double bar line.

B

魔笛
第5番-2 三人のかしこき少年が

BK=1

Musical staff BK=1, bass clef, common time. The staff contains four measures of whole rests, followed by a fifth measure with a half note G2 and a half note F2 beamed together.

BK=2

Musical staff BK=2, bass clef, common time. The staff contains five measures: a half note G2 and half note F2 beamed together; a half note G2 and half note F2 beamed together; a quarter note G2, quarter note F2, and quarter rest; a half note G2 and half note F2 beamed together; a half note G2 and quarter rest.

BK=3

Musical staff BK=3, bass clef, common time. The staff contains five measures: a half note G2 and half note F2 beamed together (*sf*); a quarter note G2, quarter note F2, and quarter rest (*p*); a half note G2 and half note F2 beamed together; a half note G2 and half note F2 beamed together; a half note G2 and quarter rest.

BK=4

Musical staff BK=4, bass clef, common time. The staff contains five measures: a quarter note G2, quarter note F2, and quarter rest; a half note G2 and half note F2 beamed together; a half note G2 and quarter rest; a half note G2 and half note F2 beamed together (*sf*); a half note G2 and quarter rest (*p*).

BK=5

Musical staff BK=5, bass clef, common time. The staff contains five measures: a half note G2 and half note F2 beamed together; a half note G2 and quarter rest; a half note G2 and half note F2 beamed together (*sf*); a half note G2 and quarter rest (*p*); a quarter note G2, quarter note F2, and quarter rest (*f*); a quarter note G2 and quarter rest (*p*).

BK=6

Musical staff BK=6, bass clef, common time. The staff contains five measures: a quarter note G2, quarter rest, and quarter note F2 (*f*); a quarter note G2, quarter rest, and quarter note F2 (*p*); a quarter note G2, quarter note F2, and quarter rest (*f*); a half note G2 and half note F2 beamed together (*p*); a quarter note G2, quarter note F2, and quarter rest.

BK=7

Musical staff BK=7, bass clef, common time. The staff contains four measures: a half note G2 and half note F2 beamed together (*p*); a quarter note G2, quarter note F2, and quarter rest; a quarter note G2, quarter note F2, and quarter rest; a quarter note G2 and quarter rest. The staff ends with a double bar line.