

魔笛  
第5番-1 フム、フム、フム

BK=1

Allegro



S

BK=2



BK=3



BK=4



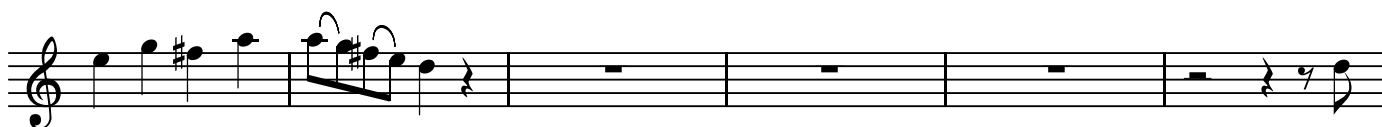
BK=5



BK=6



BK=7



BK=8



BK=9



BK=10



BK=11

Musical staff for BK=11, featuring a melody with a dynamic marking of *f* (forte) at the end.

BK=12

Musical staff for BK=12, featuring a melody with dynamic markings of *p* (piano) and *f* (forte).

BK=13

Musical staff for BK=13, featuring a melody with a dynamic marking of *p* (piano) at the end.

BK=14

Musical staff for BK=14, featuring a melody with eighth notes and rests.

BK=15

Musical staff for BK=15, featuring a melody with a long slur and dynamic markings of *fp* (fortissimo piano) and *f* (forte).

BK=16

Musical staff for BK=16, featuring a melody with eighth notes and rests.

BK=17

Musical staff for BK=17, featuring a melody with dynamic markings of *fp* (fortissimo piano) and *f* (forte).

BK=18

Musical staff for BK=18, featuring a melody with dynamic markings of *fp* (fortissimo piano), *f* (forte), and *f* (forte).

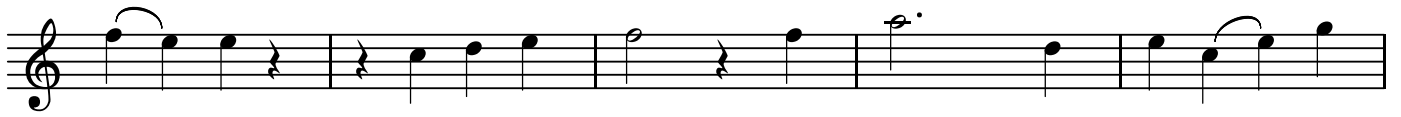
BK=19

Musical staff for BK=19, featuring a melody with a dynamic marking of *p* (piano).

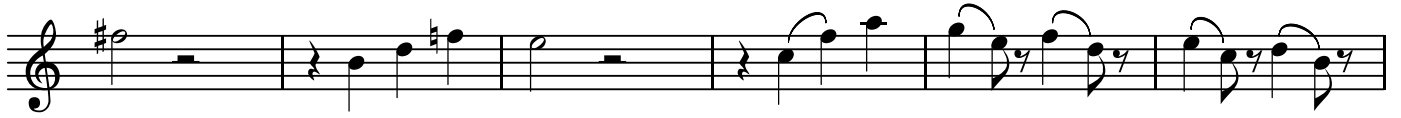
BK=20

Musical staff for BK=20, featuring a melody with a long slur.

BK=21



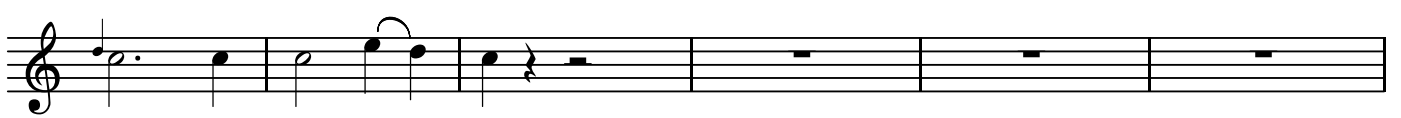
BK=22



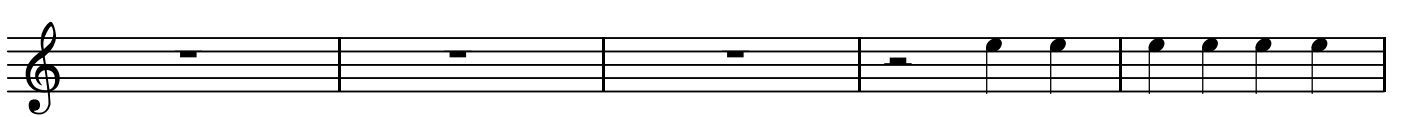
BK=23



BK=24



BK=25



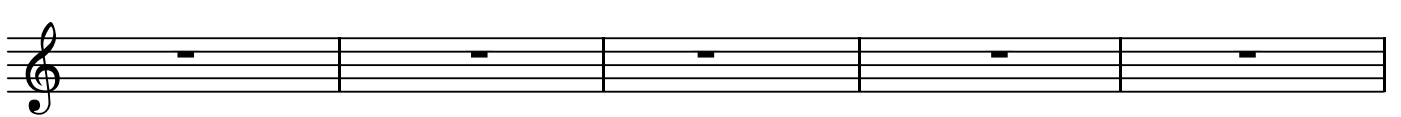
BK=26



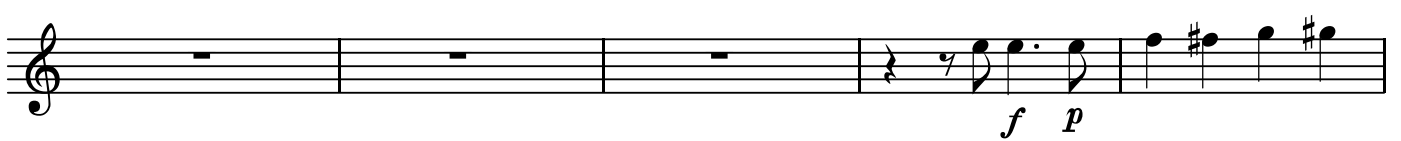
BK=27



BK=28



BK=29



BK=30



BK=31



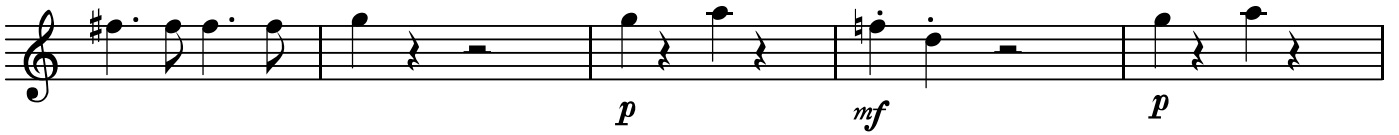
BK=32



BK=33



BK=34



BK=35



BK=36



BK=37



BK=38



BK=39





BK=11

Musical notation for BK=11, featuring a treble clef and a series of notes with dynamic markings *sf* and *f*.

BK=12

Musical notation for BK=12, featuring a treble clef and notes with dynamic markings *p*, *sf*, and *f*.

BK=13

Musical notation for BK=13, featuring a treble clef and notes with a dynamic marking *p*.

BK=14

Musical notation for BK=14, featuring a treble clef and notes with a long slur.

BK=15

Musical notation for BK=15, featuring a treble clef and notes with a long slur.

BK=16

Musical notation for BK=16, featuring a treble clef and notes with a long slur.

BK=17

Musical notation for BK=17, featuring a treble clef and notes with dynamic markings *fp* and *fp*.

BK=18

Musical notation for BK=18, featuring a treble clef and notes with dynamic markings *fp*, *fp*, and *f*.

BK=19

Musical notation for BK=19, featuring a treble clef and notes with dynamic markings *p*, *f*, and *p*.

BK=20

Musical notation for BK=20, featuring a treble clef and notes with a long slur.

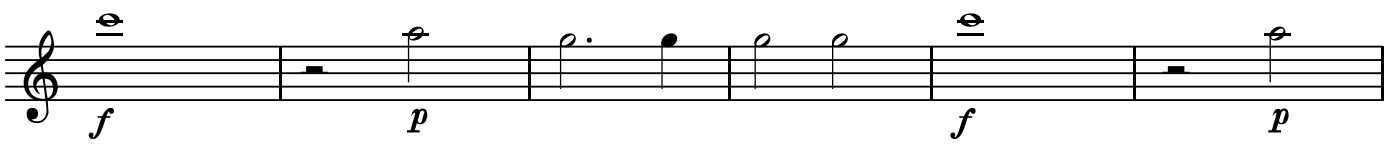
BK=21



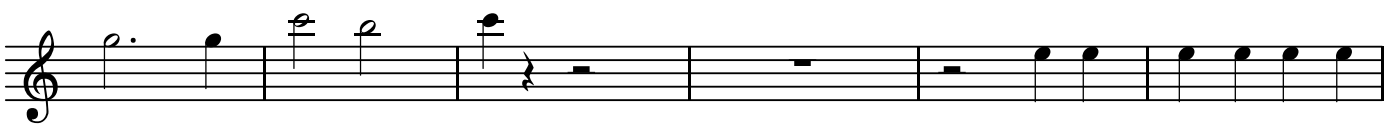
BK=22



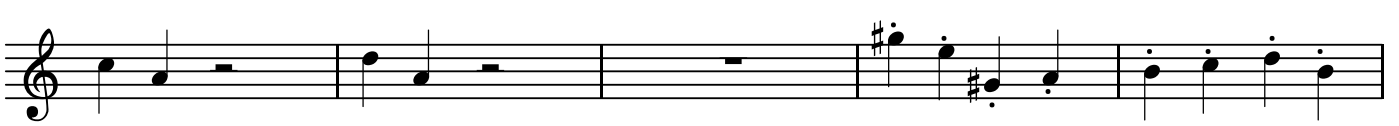
BK=23



BK=24



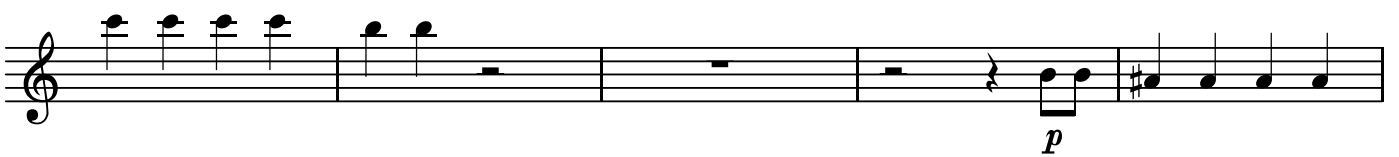
BK=25



BK=26



BK=27



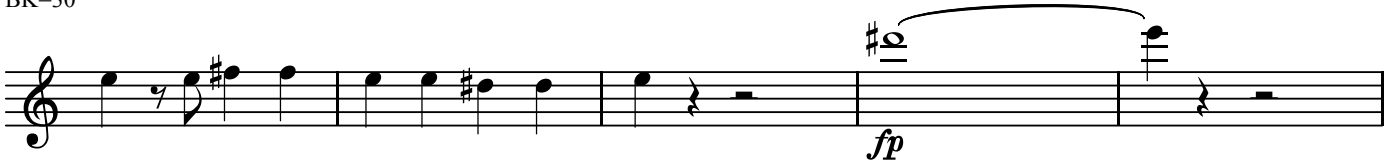
BK=28



BK=29



BK=30



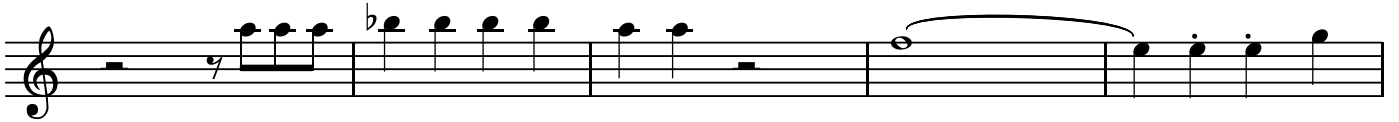
BK=31



BK=32



BK=33



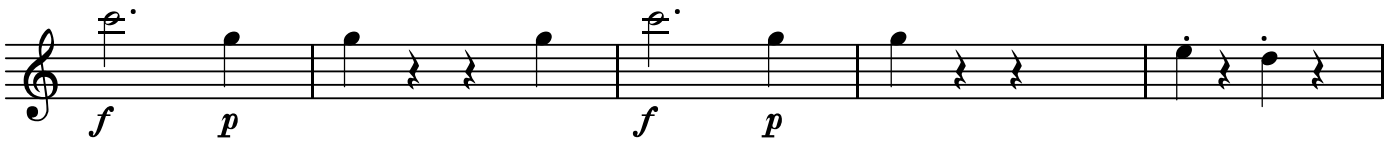
BK=34



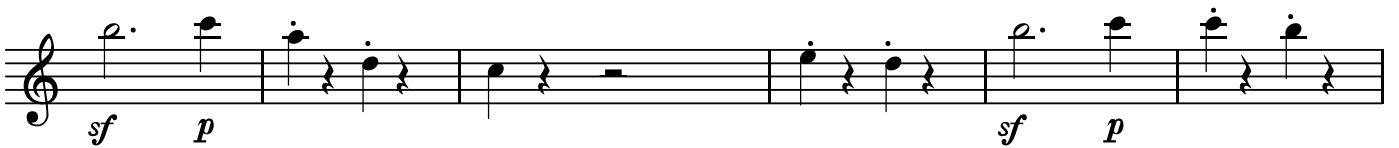
BK=35



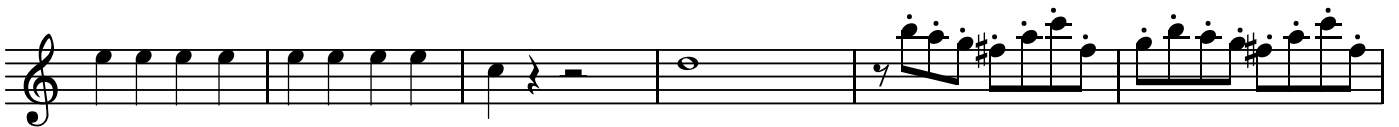
BK=36



BK=37



BK=38



BK=39





A2

魔笛  
第5番-1 フム、フム、フム

BK=1

Musical staff BK=1, starting with a treble clef and a common time signature (C). The staff contains six measures of music. The first three measures are whole rests. The fourth measure begins with a piano (*p*) dynamic marking and contains a quarter note G4, followed by a quarter rest. The fifth measure contains a quarter note A4, followed by a quarter rest. The sixth measure contains a quarter note B4, followed by a quarter rest.

A2  
BK=2

Musical staff BK=2, continuing from BK=1. It contains six measures. The first measure has a quarter note G4, followed by a quarter rest. The second measure has a half note G4 with a slur above it, followed by a quarter rest. The third measure has a quarter note A4, followed by a quarter rest. The fourth measure has a quarter note B4, followed by a quarter rest. The fifth measure has a quarter note C5, followed by a quarter rest. The sixth measure has a quarter note B4, followed by a quarter rest.

BK=3

Musical staff BK=3, continuing from BK=2. It contains six measures. The first measure has a quarter note G4, followed by a quarter rest. The second measure has a quarter note A4, followed by a quarter rest. The third measure has a quarter note B4, followed by a quarter rest. The fourth measure has a half note C5 with a slur above it, followed by a quarter rest. The fifth measure has a quarter note B4, followed by a quarter rest. The sixth measure has a quarter note A4, followed by a quarter rest.

BK=4

Musical staff BK=4, continuing from BK=3. It contains six measures. The first measure has a quarter note G4, followed by a quarter rest. The second measure has a quarter note A4, followed by a quarter rest. The third measure has a quarter note B4, followed by a quarter rest. The fourth measure has a quarter note C5, followed by a quarter rest. The fifth measure has a quarter note B4, followed by a quarter rest. The sixth measure has a quarter note A4, followed by a quarter rest.

BK=5

Musical staff BK=5, continuing from BK=4. It contains six measures. The first measure has a whole note G4. The second measure has a whole note A4. The third measure has a quarter note B4, followed by a quarter rest. The fourth measure has a quarter note C5, followed by a quarter rest. The fifth measure has a quarter note B4, followed by a quarter rest. The sixth measure has a quarter note A4, followed by a quarter rest.

BK=6

Musical staff BK=6, continuing from BK=5. It contains six measures. The first measure has a quarter note G4, followed by a quarter rest. The second measure has a quarter note A4, followed by a quarter rest. The third measure has a quarter note B4, followed by a quarter rest. The fourth measure has a quarter note C5, followed by a quarter rest. The fifth measure has a quarter note B4, followed by a quarter rest. The sixth measure has a quarter note A4, followed by a quarter rest.

BK=7

Musical staff BK=7, continuing from BK=6. It contains six measures. The first measure has a quarter note G4, followed by a quarter rest. The second measure has a quarter note A4, followed by a quarter rest. The third measure has a quarter note B4, followed by a quarter rest. The fourth measure has a quarter note C5, followed by a quarter rest. The fifth measure has a quarter note B4, followed by a quarter rest. The sixth measure has a quarter note A4, followed by a quarter rest.

BK=8

Musical staff BK=8, continuing from BK=7. It contains six measures. The first measure has a quarter note G4, followed by a quarter rest. The second measure has a quarter note A4, followed by a quarter rest. The third measure has a quarter note B4, followed by a quarter rest. The fourth measure has a quarter note C5, followed by a quarter rest. The fifth measure has a quarter note B4, followed by a quarter rest. The sixth measure has a quarter note A4, followed by a quarter rest.

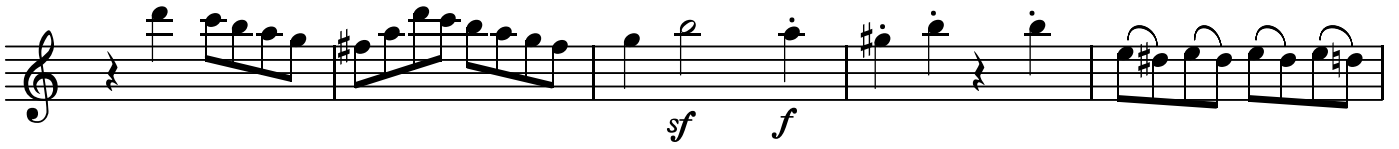
BK=9

Musical staff BK=9, continuing from BK=8. It contains six measures. The first measure has a quarter note G4, followed by a quarter rest. The second measure has a quarter note A4, followed by a quarter rest. The third measure has a quarter note B4, followed by a quarter rest. The fourth measure has a quarter note C5, followed by a quarter rest. The fifth measure has a quarter note B4, followed by a quarter rest. The sixth measure has a quarter note A4, followed by a quarter rest. The dynamic marking *cresc.* is placed below the first measure, and *f* is placed below the fifth measure.

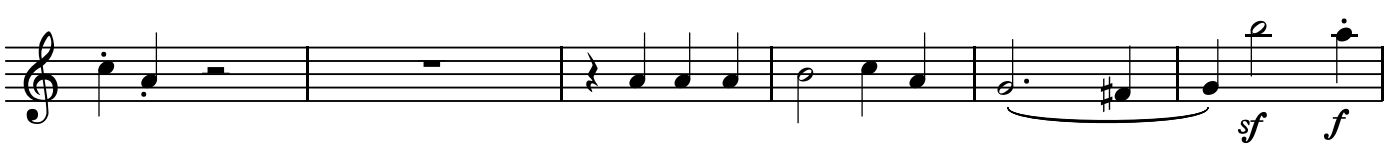
BK=10

Musical staff BK=10, continuing from BK=9. It contains six measures. The first measure has a quarter note G4, followed by a quarter rest. The second measure has a quarter note A4, followed by a quarter rest. The third measure has a quarter note B4, followed by a quarter rest. The fourth measure has a quarter note C5, followed by a quarter rest. The fifth measure has a quarter note B4, followed by a quarter rest. The sixth measure has a quarter note A4, followed by a quarter rest.

BK=11



BK=12



BK=13



BK=14



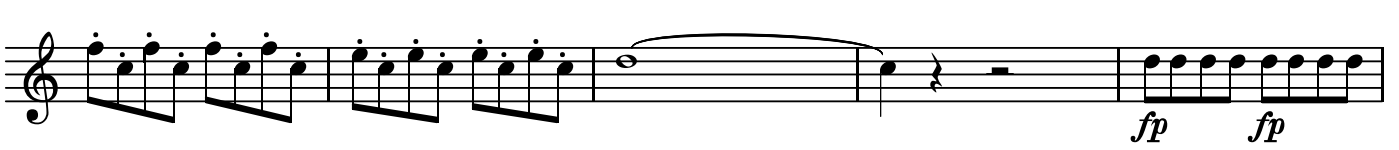
BK=15



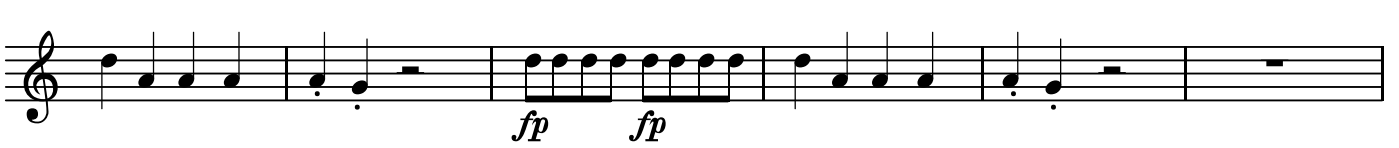
BK=16



BK=17



BK=18



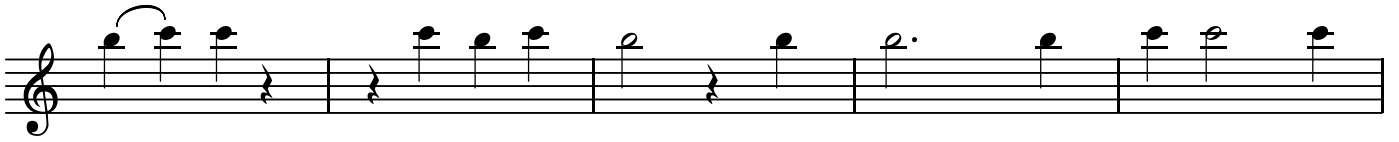
BK=19



BK=20



BK=21



BK=22



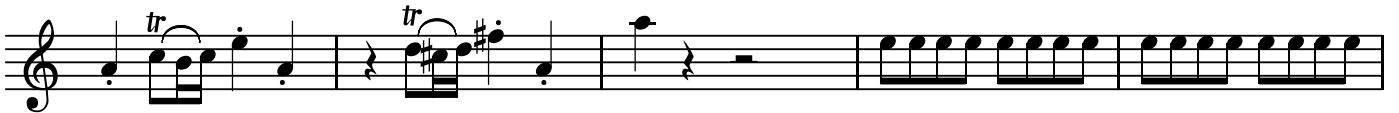
BK=23



BK=24



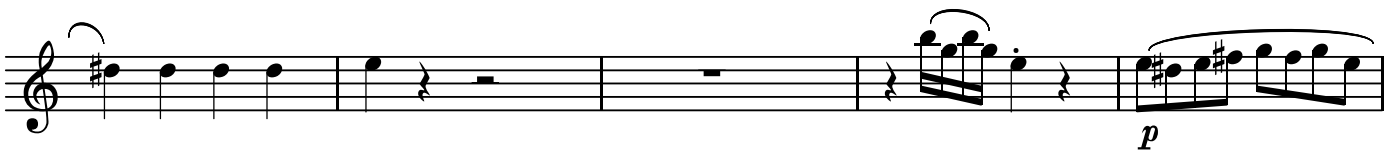
BK=25



BK=26



BK=27



BK=28



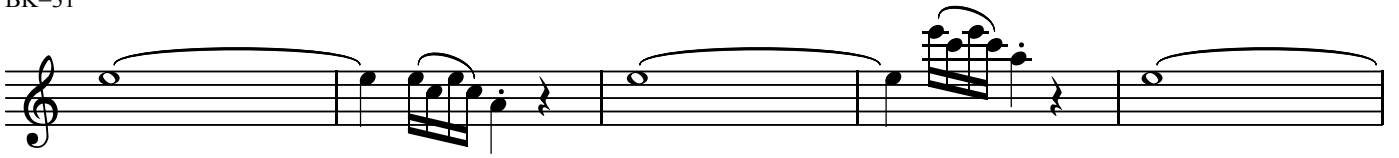
BK=29



BK=30



BK=31



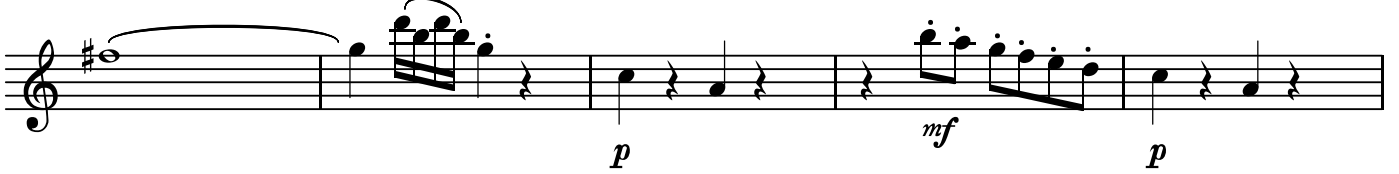
BK=32



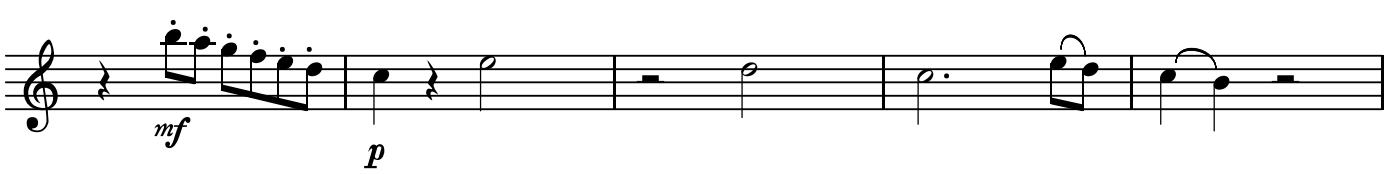
BK=33



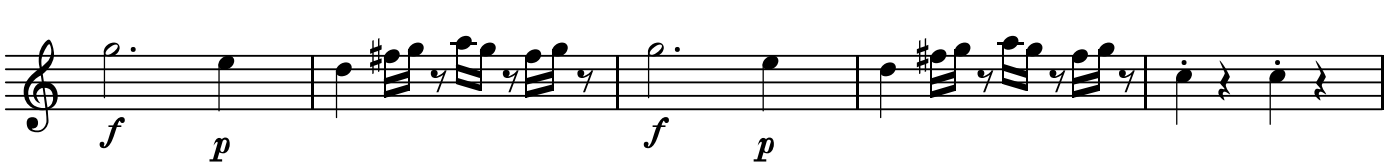
BK=34



BK=35



BK=36



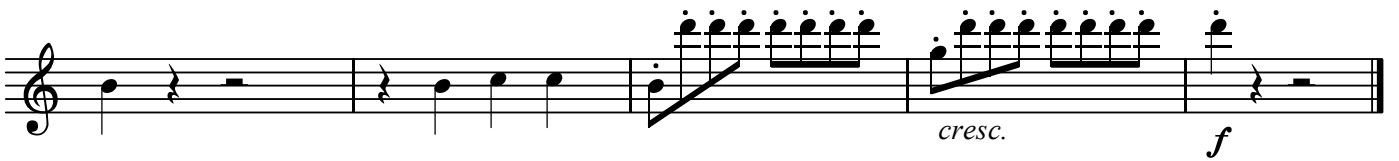
BK=37



BK=38



BK=39





BK=11

Musical staff for BK=11. It contains a single line of music with various notes and rests. Dynamic markings *sf* and *f* are present below the staff.

BK=12

Musical staff for BK=12. It contains a single line of music with various notes and rests. Dynamic markings *sf* and *f* are present below the staff.

BK=13

Musical staff for BK=13. It contains a single line of music with various notes and rests. A dynamic marking *p* is present below the staff.

BK=14

Musical staff for BK=14. It contains a single line of music with various notes and rests.

BK=15

Musical staff for BK=15. It contains a single line of music with various notes and rests.

BK=16

Musical staff for BK=16. It contains a single line of music with various notes and rests.

BK=17

Musical staff for BK=17. It contains a single line of music with various notes and rests. Dynamic markings *fp* and *fp* are present below the staff.

BK=18

Musical staff for BK=18. It contains a single line of music with various notes and rests. Dynamic markings *fp*, *fp*, and *f* are present below the staff.

BK=19

Musical staff for BK=19. It contains a single line of music with various notes and rests. Dynamic markings *p*, *f*, and *p* are present below the staff.

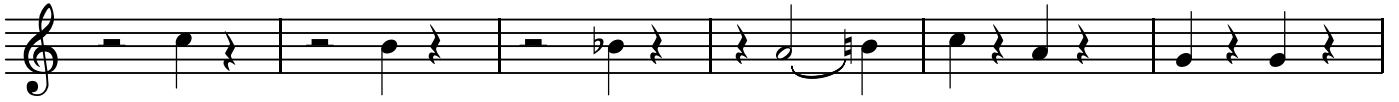
BK=20

Musical staff for BK=20. It contains a single line of music with various notes and rests.

BK=21



BK=22



BK=23



BK=24



BK=25



BK=26



BK=27



BK=28



BK=29



BK=30



BK=31



BK=32



BK=33



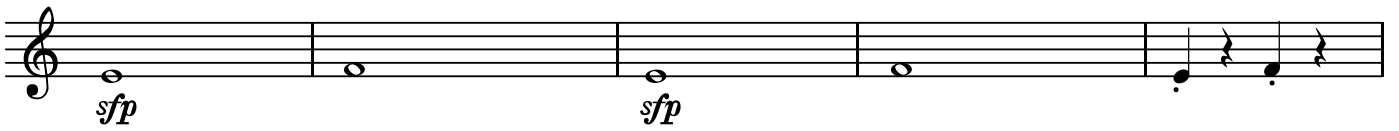
BK=34



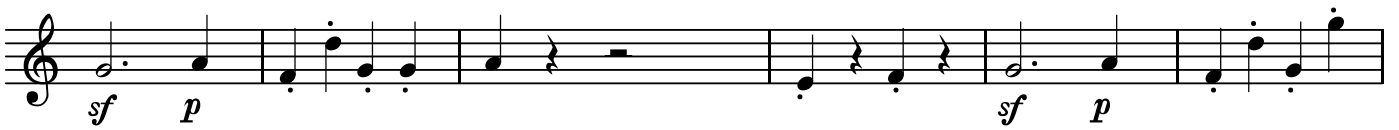
BK=35



BK=36



BK=37



BK=38



BK=39





B

魔笛  
第5番-1 フム、フム、フム

BK=1

First musical staff (BK=1) in bass clef, common time. It begins with a whole rest, followed by a half rest, and then a series of eighth notes and quarter notes. Dynamics include *B* (breath mark) and *f* (forte).

BK=2

Second musical staff (BK=2) in bass clef, common time. It features a half note, a whole note with a slur, and several quarter notes. Dynamics include *f* (forte).

BK=3

Third musical staff (BK=3) in bass clef, common time. It contains eighth notes, quarter notes, and a half note with a slur. Dynamics include *f* (forte).

BK=4

Fourth musical staff (BK=4) in bass clef, common time. It consists of eighth notes and quarter notes with various rests.

BK=5

Fifth musical staff (BK=5) in bass clef, common time. It starts with a whole rest, followed by eighth notes and quarter notes. Dynamics include *f* (forte).

BK=6

Sixth musical staff (BK=6) in bass clef, common time. It features eighth notes, quarter notes, and a half note with a sharp sign. Dynamics include *f* (forte).

BK=7

Seventh musical staff (BK=7) in bass clef, common time. It contains quarter notes and eighth notes with various rests.

BK=8

Eighth musical staff (BK=8) in bass clef, common time. It features quarter notes and eighth notes with various rests.

BK=9

Ninth musical staff (BK=9) in bass clef, common time. It contains eighth notes and quarter notes. Dynamics include *cresc.* (crescendo), *f* (forte), and *p* (piano).

BK=10

Tenth musical staff (BK=10) in bass clef, common time. It features eighth notes and quarter notes with various rests.



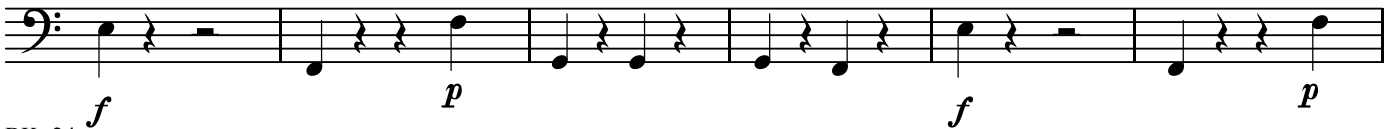
BK=21



BK=22



BK=23



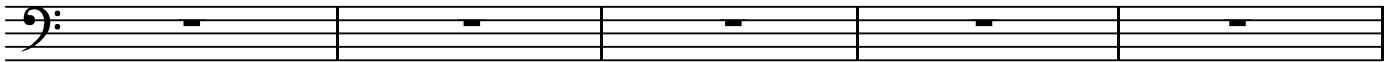
BK=24



BK=25



BK=26



BK=27



BK=28



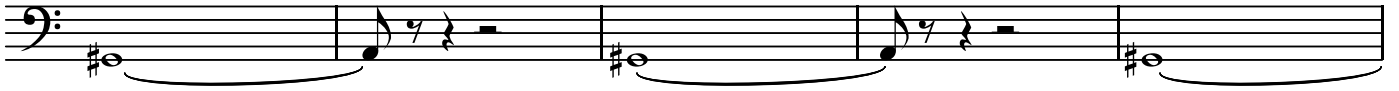
BK=29



BK=30



BK=31



BK=32



BK=33



BK=34



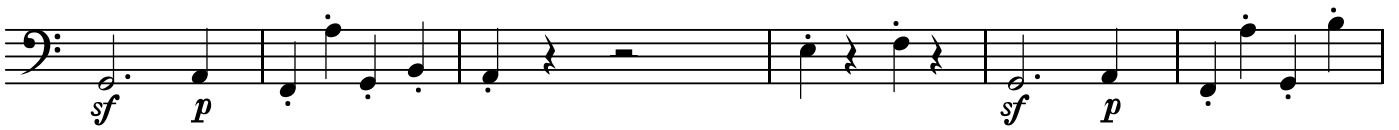
BK=35



BK=36



BK=37



BK=38



BK=39

