

第21番 終曲-2 魔笛 苦難に満ちたこの道を

BK=1

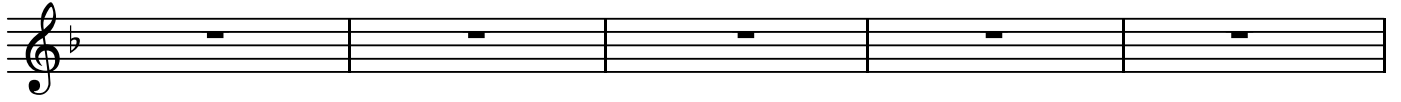
Adagio



S1
BK=2



BK=3



BK=4



BK=5



BK=6



BK=7



BK=8



BK=9



BK=10



BK=11



BK=12



BK=13

Allegretto



BK=14



BK=15



BK=16



BK=17



BK=18



魔笛
第21番 終曲-2 苦難に満ちたこの道を

BK=1

Musical staff for BK=1, featuring a melody in treble clef with a key signature of one flat and a common time signature. The staff begins with a dynamic marking of *f* (forte).

S2

BK=2

Musical staff for BK=2, featuring a melody in treble clef with a key signature of one flat and a common time signature. The staff begins with a dynamic marking of *p* (piano).

BK=3

Musical staff for BK=3, featuring a melody in treble clef with a key signature of one flat and a common time signature.

BK=4

Musical staff for BK=4, featuring a melody in treble clef with a key signature of one flat and a common time signature.

BK=5

Musical staff for BK=5, featuring a melody in treble clef with a key signature of one flat and a common time signature.

BK=6

Musical staff for BK=6, featuring a melody in treble clef with a key signature of one flat and a common time signature.

BK=7

Musical staff for BK=7, featuring a melody in treble clef with a key signature of one flat and a common time signature.

BK=8

Musical staff for BK=8, featuring a melody in treble clef with a key signature of one flat and a common time signature.

BK=9

Musical staff for BK=9, featuring a melody in treble clef with a key signature of one flat and a common time signature.

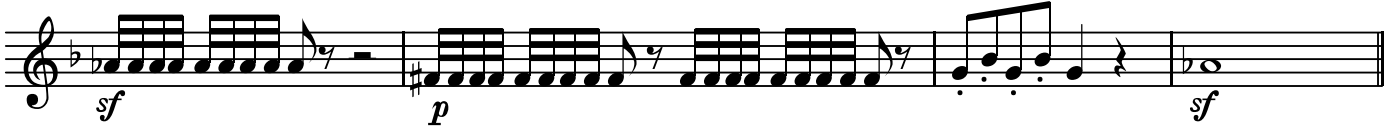
BK=10

Musical staff for BK=10, featuring a melody in treble clef with a key signature of one flat and a common time signature.

BK=11



BK=12



BK=13



BK=14



BK=15



BK=16



BK=17



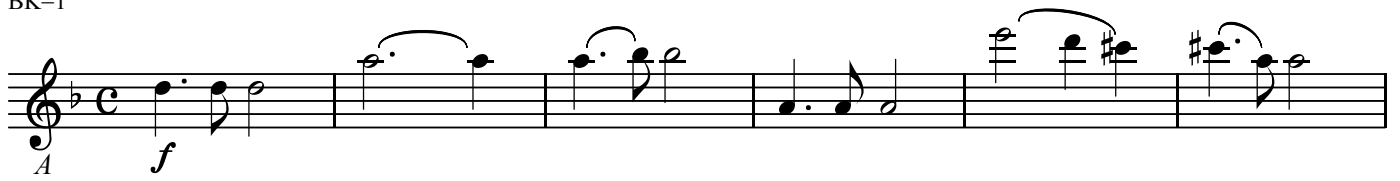
BK=18



A

魔笛
第21番 終曲-2 苦難に満ちたこの道を

BK=1



Musical notation for BK=1, starting with a treble clef, a key signature of one flat (B-flat), and a common time signature (C). The first measure is marked with a forte dynamic (*f*). The notation includes various note values, rests, and slurs.

BK=2



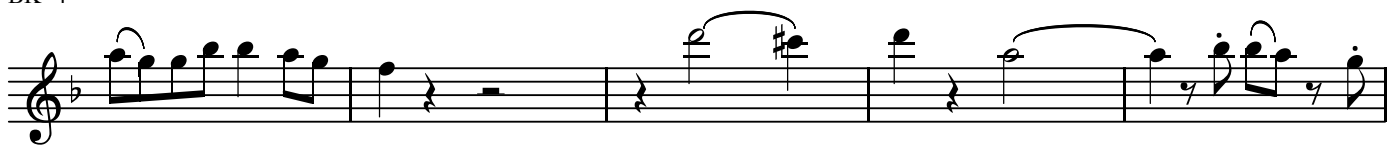
Musical notation for BK=2, starting with a treble clef, a key signature of one flat (B-flat), and a common time signature (C). The first measure is marked with a piano dynamic (*p*). The notation includes various note values, rests, and slurs.

BK=3



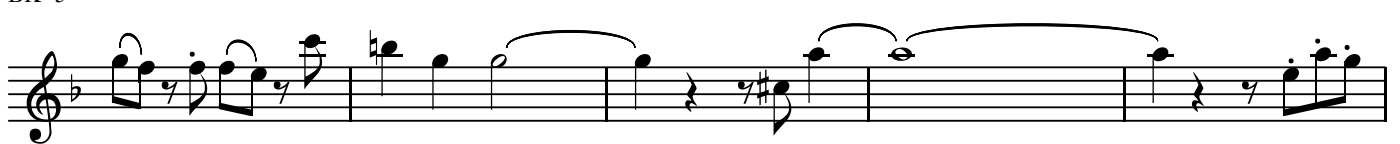
Musical notation for BK=3, starting with a treble clef, a key signature of one flat (B-flat), and a common time signature (C). The notation includes various note values, rests, and slurs.

BK=4



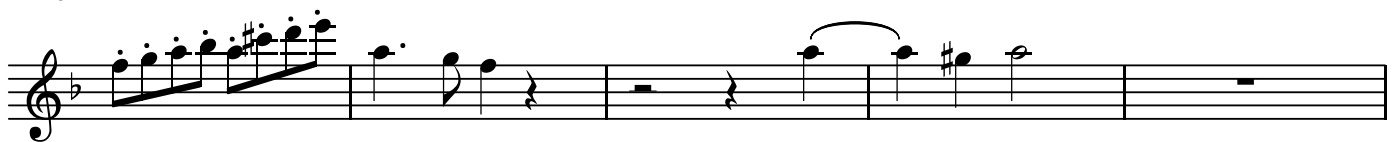
Musical notation for BK=4, starting with a treble clef, a key signature of one flat (B-flat), and a common time signature (C). The notation includes various note values, rests, and slurs.

BK=5



Musical notation for BK=5, starting with a treble clef, a key signature of one flat (B-flat), and a common time signature (C). The notation includes various note values, rests, and slurs.

BK=6



Musical notation for BK=6, starting with a treble clef, a key signature of one flat (B-flat), and a common time signature (C). The notation includes various note values, rests, and slurs.

BK=7



Musical notation for BK=7, starting with a treble clef, a key signature of one flat (B-flat), and a common time signature (C). The notation includes various note values, rests, and slurs.

BK=8



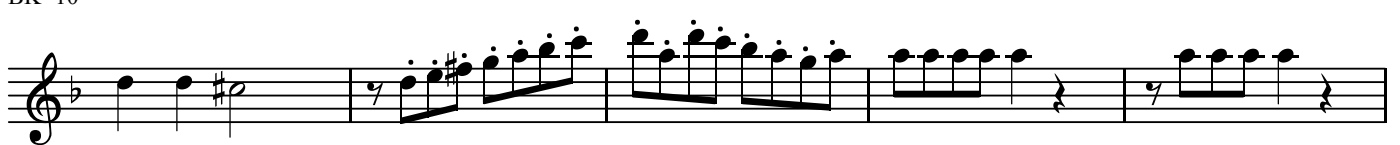
Musical notation for BK=8, starting with a treble clef, a key signature of one flat (B-flat), and a common time signature (C). The notation includes various note values, rests, and slurs.

BK=9



Musical notation for BK=9, starting with a treble clef, a key signature of one flat (B-flat), and a common time signature (C). The notation includes various note values, rests, and slurs.

BK=10



Musical notation for BK=10, starting with a treble clef, a key signature of one flat (B-flat), and a common time signature (C). The notation includes various note values, rests, and slurs.

BK=11



Musical notation for BK=11, featuring eighth and sixteenth notes with dynamic markings *sf*.

BK=12



Musical notation for BK=12, featuring sixteenth notes and a half note with dynamic markings *sf* and *p*.

BK=13



Musical notation for BK=13, featuring eighth notes with dynamic marking *p*.

BK=14



Musical notation for BK=14, featuring eighth notes and quarter notes.

BK=15



Musical notation for BK=15, featuring eighth notes and a half note with dynamic markings *f* and *p*.

BK=16



Musical notation for BK=16, featuring eighth notes and quarter notes.

BK=17



Musical notation for BK=17, featuring eighth notes and quarter notes with dynamic markings *f* and *p*.

BK=18



Musical notation for BK=18, featuring eighth notes and quarter notes.

T

魔笛
第21番 終曲-2 苦難に満ちたこの道を

BK=1

Musical staff BK=1, starting with a treble clef, a key signature of one flat (B-flat), and a common time signature (C). The staff contains a melodic line with a dynamic marking of *f* (forte) and a *T* (trill) marking over the first note.

BK=2

Musical staff BK=2, continuing the melodic line with a dynamic marking of *p* (piano).

BK=3

Musical staff BK=3, featuring a more complex melodic line with various rhythmic values and accidentals.

BK=4

Musical staff BK=4, continuing the melodic development with a dynamic marking of *f*.

BK=5

Musical staff BK=5, featuring a melodic line with a dynamic marking of *f*.

BK=6

Musical staff BK=6, continuing the melodic line with a dynamic marking of *f*.

BK=7

Musical staff BK=7, featuring a melodic line with a dynamic marking of *f*.

BK=8

Musical staff BK=8, featuring a melodic line with a dynamic marking of *f*.

BK=9

Musical staff BK=9, featuring a melodic line with a dynamic marking of *f*.

BK=10

Musical staff BK=10, featuring a melodic line with a dynamic marking of *f*.

BK=11

Musical notation for BK=11, featuring a treble clef, a key signature of one flat, and a 7/8 time signature. The piece consists of four measures. The first three measures contain eighth-note patterns, while the fourth measure features a complex sixteenth-note texture. Dynamic markings *sf* are placed below the final two measures.

BK=12

Musical notation for BK=12, featuring a treble clef, a key signature of one flat, and a 7/8 time signature. The piece consists of four measures. The first measure has a sixteenth-note texture with a dynamic marking of *sf*. The second measure has a dynamic marking of *p*. The third measure has a dynamic marking of *sf*. The fourth measure contains a single half note.

BK=13

Musical notation for BK=13, featuring a treble clef, a key signature of one flat, and a 7/8 time signature. The piece consists of four measures of eighth-note patterns. A dynamic marking of *p* is placed below the first measure.

BK=14

Musical notation for BK=14, featuring a treble clef, a key signature of one flat, and a 7/8 time signature. The piece consists of four measures of eighth-note patterns with various slurs and ties.

BK=15

Musical notation for BK=15, featuring a treble clef, a key signature of one flat, and a 7/8 time signature. The piece consists of four measures of eighth-note patterns with various slurs and ties.

BK=16

Musical notation for BK=16, featuring a treble clef, a key signature of one flat, and a 7/8 time signature. The piece consists of four measures of eighth-note patterns. Dynamic markings of *fp* are placed below the final two measures.

BK=17

Musical notation for BK=17, featuring a treble clef, a key signature of one flat, and a 7/8 time signature. The piece consists of four measures. The first measure has a dynamic marking of *fp*. The second measure has a dynamic marking of *f*. The third measure has a dynamic marking of *p*. The fourth measure has a dynamic marking of *fp*.

BK=18

Musical notation for BK=18, featuring a treble clef, a key signature of one flat, and a 7/8 time signature. The piece consists of four measures of eighth-note patterns with various slurs and ties.

B

魔笛
第21番 終曲-2 苦難に満ちたこの道を

BK=1

Musical notation for BK=1, featuring a bass clef, a key signature of one flat (B-flat), and a common time signature (C). The notation includes a dynamic marking of *f* (forte) and a *B* marking. The melody consists of several measures with notes and rests, including a slur over a group of notes.

BK=2

Musical notation for BK=2, consisting of a single measure with a whole rest.

BK=3

Musical notation for BK=3, featuring a bass clef, a key signature of one flat, and a common time signature. The notation includes a dynamic marking of *p* (piano) and a series of eighth notes.

BK=4

Musical notation for BK=4, featuring a bass clef, a key signature of one flat, and a common time signature. The notation includes a series of eighth notes.

BK=5

Musical notation for BK=5, featuring a bass clef, a key signature of one flat, and a common time signature. The notation includes a series of eighth notes.

BK=6

Musical notation for BK=6, featuring a bass clef, a key signature of one flat, and a common time signature. The notation includes a series of eighth notes.

BK=7

Musical notation for BK=7, featuring a bass clef, a key signature of one flat, and a common time signature. The notation includes a series of eighth notes.

BK=8

Musical notation for BK=8, featuring a bass clef, a key signature of one flat, and a common time signature. The notation includes a series of eighth notes.

BK=9

Musical notation for BK=9, featuring a bass clef, a key signature of one flat, and a common time signature. The notation includes a series of eighth notes.

BK=10

Musical notation for BK=10, featuring a bass clef, a key signature of one flat, and a common time signature. The notation includes a series of eighth notes.

