

S

魔笛

第11番 女性のたぐらみに気をつけよ

BK=1 Allegretto



S

BK=2



BK=3



BK=4



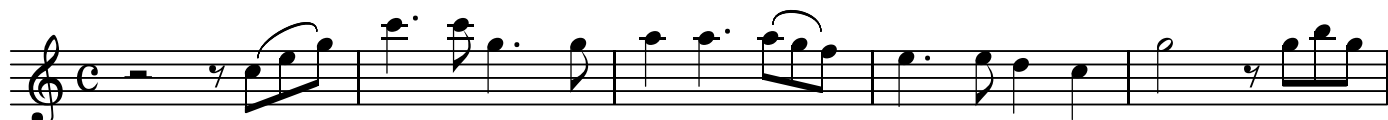
BK=5



A1

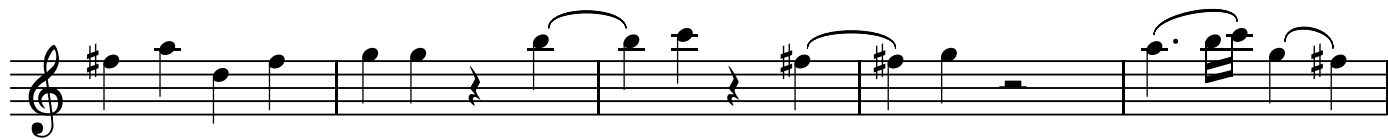
魔笛
第11番 女性のたくらみに気をつけよ

BK=1



Al

BK=2



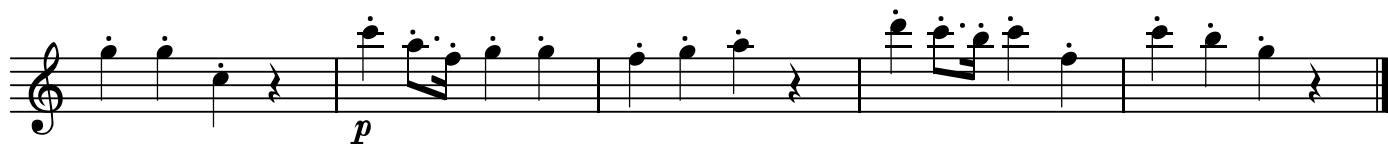
BK=3



BK=4



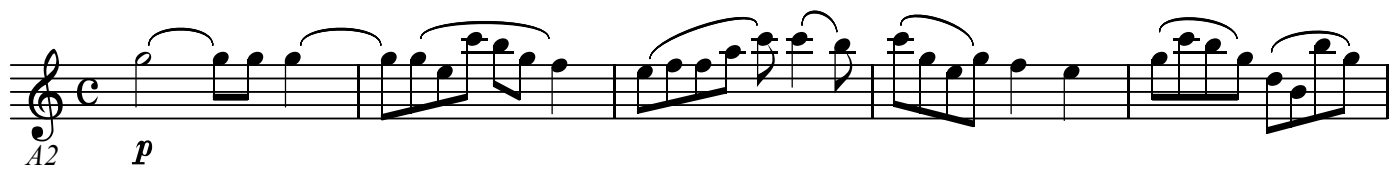
BK=5



A2

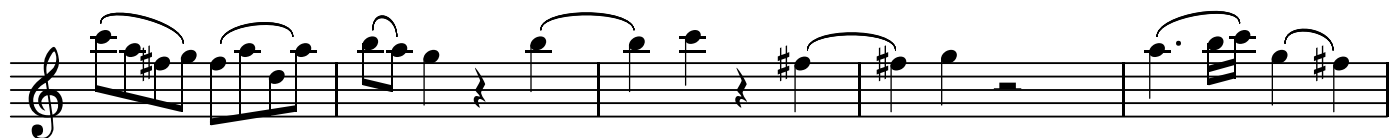
魔笛
第11番 女性のたくらみに気をつけよ

BK=1



Musical notation for BK=1, starting with a treble clef, common time signature, and a dynamic marking of *p*. The notation consists of a single staff with a series of eighth and sixteenth notes, many of which are beamed together and have slurs above them.

BK=2



Musical notation for BK=2, continuing the melody with various note values and slurs.

BK=3



Musical notation for BK=3, featuring a mix of eighth and sixteenth notes with slurs.

BK=4



Musical notation for BK=4, including dynamic markings of *mf*, *f*, and *p* across the staff.

BK=5



Musical notation for BK=5, concluding the piece with a dynamic marking of *p* and a double bar line.

T

魔笛
第11番 女性のたくらみに気をつけよ

BK=1



Musical notation for BK=1, starting with a treble clef, a common time signature (C), and a dynamic marking of *p*. The notation includes a series of eighth and sixteenth notes, followed by a half note and a quarter note.

BK=2



Musical notation for BK=2, starting with a treble clef and a key signature of one sharp (F#). The notation includes a series of quarter notes, followed by a half note and a quarter note.

BK=3



Musical notation for BK=3, starting with a treble clef. The notation includes a series of quarter notes, followed by a half note and a quarter note.

BK=4



Musical notation for BK=4, starting with a treble clef and a key signature of one sharp (F#). The notation includes a series of quarter notes, followed by a half note and a quarter note. Dynamic markings *mf*, *f*, and *p* are present.

BK=5

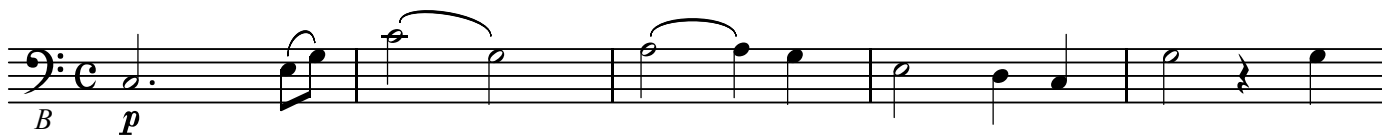


Musical notation for BK=5, starting with a treble clef. The notation includes a series of quarter notes, followed by a half note and a quarter note. A dynamic marking of *p* is present.

B

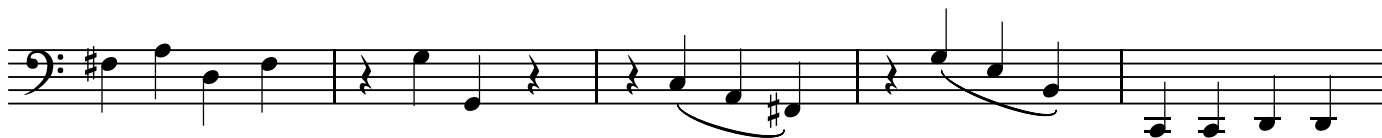
魔笛
第11番 女性のたくらみに気をつけよ

BK=1



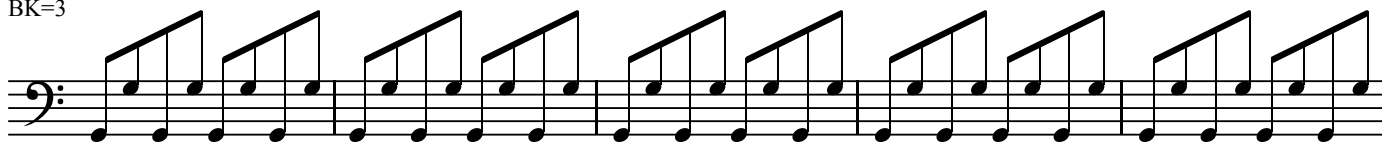
Musical notation for BK=1, featuring a bass clef, common time signature, and dynamics *B* and *p*. The staff contains a melodic line with slurs and a final whole note.

BK=2



Musical notation for BK=2, featuring a bass clef, key signature of one sharp (F#), and a melodic line with slurs and a final whole note.

BK=3



Musical notation for BK=3, featuring a bass clef and a rhythmic pattern of eighth notes with upward stems.

BK=4



Musical notation for BK=4, featuring a bass clef, key signature of one sharp (F#), and dynamics *mf*, *f*, and *p*. The staff contains a melodic line with slurs and a final whole note.

BK=5



Musical notation for BK=5, featuring a bass clef, key signature of one sharp (F#), and dynamic *p*. The staff contains a melodic line with slurs and a final whole note.