

Ave verum corpus KV618  
まことの御体よ

W.A.Mozart

BK=1 Adagio  
Al



BK=2



BK=3



BK=4



BK=5



BK=6



BK=7



BK=8



Detailed description: This image shows a page of musical notation for the piece 'Ave verum corpus KV618' by W.A. Mozart. The page is divided into eight systems, labeled BK=1 through BK=8. The first system (BK=1) is marked 'Adagio' and 'Al' (Allegretto). The notation is in treble clef with a common time signature (C). The music consists of eighth and sixteenth notes, often beamed together in groups, with various accidentals (sharps, flats, naturals) and slurs. The eighth system (BK=8) ends with a trill (tr) over a note and a double bar line. The overall style is characteristic of the Classical period.

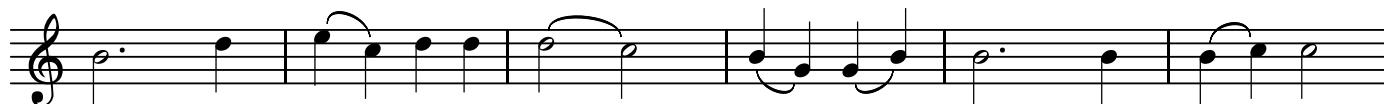
Ave verum corpus KV618  
まことの御体よ

W.A.Mozart

BK=1



BK=2



BK=3



BK=4



BK=5



BK=6



BK=7



BK=8



Ave verum corpus KV618  
まことの御体よ

W.A.Mozart

BK=1



BK=2



BK=3



BK=4



BK=5



BK=6



BK=7



BK=8



Ave verum corpus KV618  
まことの御体よ

W.A.Mozart

BK=1

Musical staff BK=1, starting with a treble clef and a common time signature (C). The staff contains a series of notes: a whole rest, another whole rest, followed by a half note G4, a quarter note A4, a quarter note B4, a quarter note C5, a quarter note B4, a quarter note A4, a quarter note G4, and a quarter note F4.

BK=2

Musical staff BK=2, starting with a treble clef and a common time signature (C). The staff contains a series of notes: a dotted quarter note G4, an eighth note A4, an eighth note B4, a quarter note C5, a quarter note B4, a quarter note A4, a quarter note G4, a dotted quarter note F4, and a quarter note G4.

BK=3

Musical staff BK=3, starting with a treble clef and a common time signature (C). The staff contains a series of notes: a dotted quarter note G4, an eighth note A4, an eighth note B4, a quarter note C5, a quarter note B4, a quarter note A4, a quarter note G4, a dotted quarter note F4, and a quarter note G4.

BK=4

Musical staff BK=4, starting with a treble clef and a common time signature (C). The staff contains a series of notes: a whole rest, another whole rest, another whole rest, a dotted quarter note G4, an eighth note A4, an eighth note B4, a quarter note C5, a quarter note B4, a quarter note A4, and a quarter note G4.

BK=5

Musical staff BK=5, starting with a treble clef and a common time signature (C). The staff contains a series of notes: a dotted quarter note G4, an eighth note A4, an eighth note B4, a quarter note C5, a quarter note B4, a quarter note A4, a quarter note G4, a dotted quarter note F4, and a quarter note G4.

BK=6

Musical staff BK=6, starting with a treble clef and a common time signature (C). The staff contains a series of notes: a dotted quarter note G4, an eighth note A4, an eighth note B4, a quarter note C5, a quarter note B4, a quarter note A4, a quarter note G4, a dotted quarter note F4, and a quarter note G4.

BK=7

Musical staff BK=7, starting with a treble clef and a common time signature (C). The staff contains a series of notes: a dotted quarter note G4, an eighth note A4, an eighth note B4, a quarter note C5, a quarter note B4, a quarter note A4, a quarter note G4, a dotted quarter note F4, and a quarter note G4.

BK=8

Musical staff BK=8, starting with a treble clef and a common time signature (C). The staff contains a series of notes: a whole rest, another whole rest, another whole rest, another whole rest, and a double bar line.

Ave verum corpus KV618  
まことの御体よ

W.A.Mozart

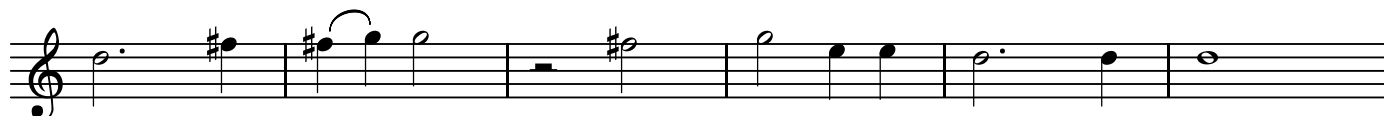
BK=1



BK=2



BK=3



BK=4



BK=5



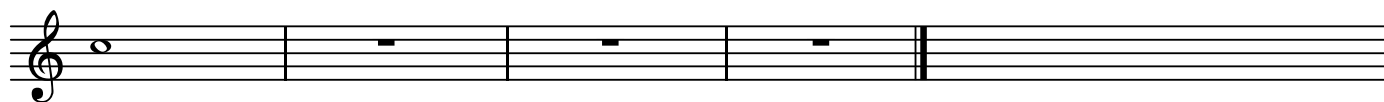
BK=6



BK=7



BK=8



T2

Ave verum corpus KV618  
まことの御体よ

W.A.Mozart

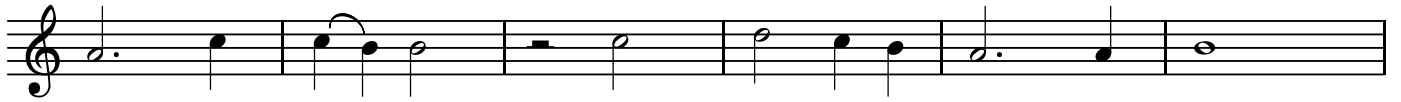
BK=1



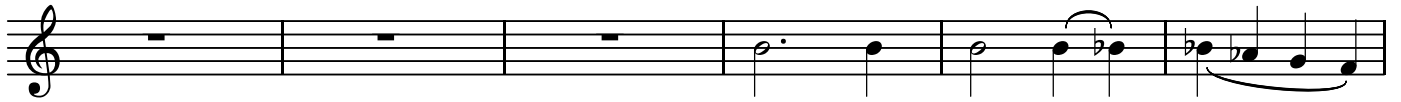
BK=2



BK=3



BK=4



BK=5



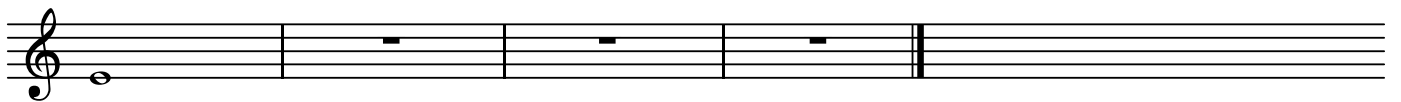
BK=6



BK=7



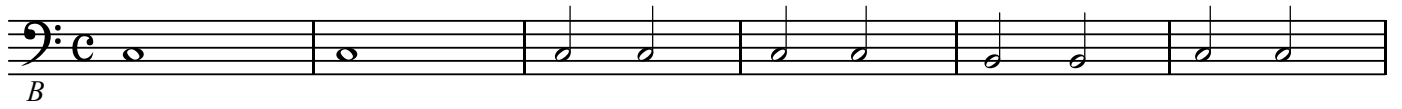
BK=8



Ave verum corpus KV618  
まことの御体よ

W.A.Mozart

BK=1



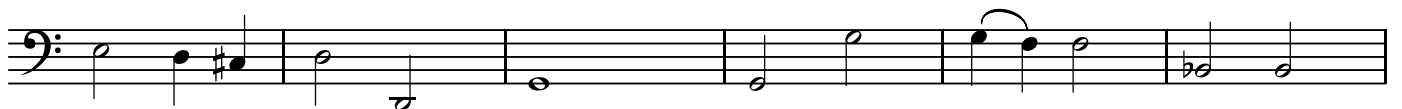
BK=2



BK=3



BK=4



BK=5



BK=6



BK=7



BK=8

