

A

2. Menuetto

BK=1
Allegretto

Musical notation for BK=1, Allegretto. The piece is in 3/4 time. It begins with a forte dynamic (*f*). The melody consists of eighth and sixteenth notes, with some rests. The first measure is a half note G4, followed by quarter notes A4, B4, and C5. The second measure has a quarter rest followed by eighth notes D5, E5, F5, and G5. The third measure has eighth notes G5, F5, E5, and D5. The fourth measure is a half note G4. The fifth measure has a quarter note A4, followed by eighth notes B4, C5, and D5. The sixth measure has eighth notes E5, F5, G5, and A5. The seventh measure is a half note G4. The eighth measure has a quarter note A4, followed by eighth notes B4, C5, and D5. The ninth measure has eighth notes E5, F5, G5, and A5. The tenth measure is a half note G4. The eleventh measure has a quarter note A4, followed by eighth notes B4, C5, and D5. The twelfth measure has eighth notes E5, F5, G5, and A5. The piece ends with a double bar line and repeat dots.

BK=2

Musical notation for BK=2. The piece is in 3/4 time. It begins with a repeat sign. The melody consists of quarter and eighth notes. The first measure is a half note G4, followed by quarter notes A4, B4, and C5. The second measure has a quarter rest followed by eighth notes D5, E5, F5, and G5. The third measure has eighth notes G5, F5, E5, and D5. The fourth measure is a half note G4. The fifth measure has a quarter note A4, followed by eighth notes B4, C5, and D5. The sixth measure has eighth notes E5, F5, G5, and A5. The seventh measure is a half note G4. The eighth measure has a quarter note A4, followed by eighth notes B4, C5, and D5. The ninth measure has eighth notes E5, F5, G5, and A5. The tenth measure is a half note G4. The eleventh measure has a quarter note A4, followed by eighth notes B4, C5, and D5. The twelfth measure has eighth notes E5, F5, G5, and A5. The piece ends with a double bar line and repeat dots.

BK=3

Musical notation for BK=3. The piece is in 3/4 time. It begins with a half note G4, followed by quarter notes A4, B4, and C5. The second measure has a quarter rest followed by eighth notes D5, E5, F5, and G5. The third measure has eighth notes G5, F5, E5, and D5. The fourth measure is a half note G4. The fifth measure has a quarter note A4, followed by eighth notes B4, C5, and D5. The sixth measure has eighth notes E5, F5, G5, and A5. The seventh measure is a half note G4. The eighth measure has a quarter note A4, followed by eighth notes B4, C5, and D5. The ninth measure has eighth notes E5, F5, G5, and A5. The tenth measure is a half note G4. The eleventh measure has a quarter note A4, followed by eighth notes B4, C5, and D5. The twelfth measure has eighth notes E5, F5, G5, and A5. The piece ends with a double bar line and repeat dots.

BK=4

Musical notation for BK=4, Trio. The piece is in 3/4 time. It begins with a repeat sign. The melody consists of quarter and eighth notes. The first measure is a half note G4, followed by quarter notes A4, B4, and C5. The second measure has a quarter rest followed by eighth notes D5, E5, F5, and G5. The third measure has eighth notes G5, F5, E5, and D5. The fourth measure is a half note G4. The fifth measure has a quarter note A4, followed by eighth notes B4, C5, and D5. The sixth measure has eighth notes E5, F5, G5, and A5. The seventh measure is a half note G4. The eighth measure has a quarter note A4, followed by eighth notes B4, C5, and D5. The ninth measure has eighth notes E5, F5, G5, and A5. The tenth measure is a half note G4. The eleventh measure has a quarter note A4, followed by eighth notes B4, C5, and D5. The twelfth measure has eighth notes E5, F5, G5, and A5. The piece ends with a double bar line and repeat dots.

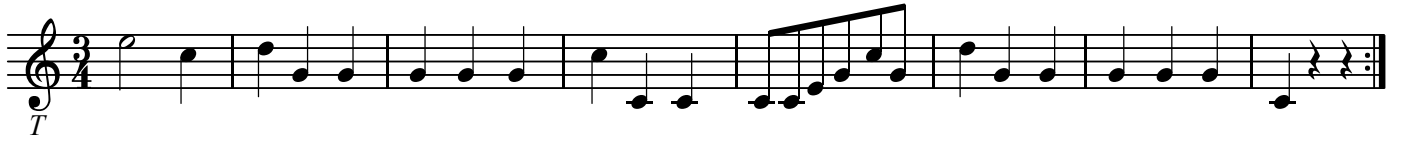
BK=5

Musical notation for BK=5. The piece is in 3/4 time. It begins with a repeat sign. The melody consists of quarter and eighth notes. The first measure is a half note G4, followed by quarter notes A4, B4, and C5. The second measure has a quarter rest followed by eighth notes D5, E5, F5, and G5. The third measure has eighth notes G5, F5, E5, and D5. The fourth measure is a half note G4. The fifth measure has a quarter note A4, followed by eighth notes B4, C5, and D5. The sixth measure has eighth notes E5, F5, G5, and A5. The seventh measure is a half note G4. The eighth measure has a quarter note A4, followed by eighth notes B4, C5, and D5. The ninth measure has eighth notes E5, F5, G5, and A5. The tenth measure is a half note G4. The eleventh measure has a quarter note A4, followed by eighth notes B4, C5, and D5. The twelfth measure has eighth notes E5, F5, G5, and A5. The piece ends with a double bar line and repeat dots.

T

2. Menuetto

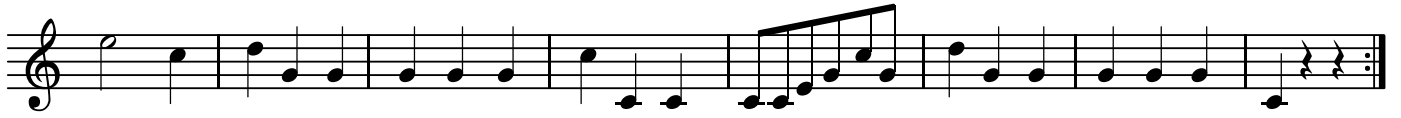
BK=1



BK=2



BK=3



BK=4



BK=5



Menuetto D.C