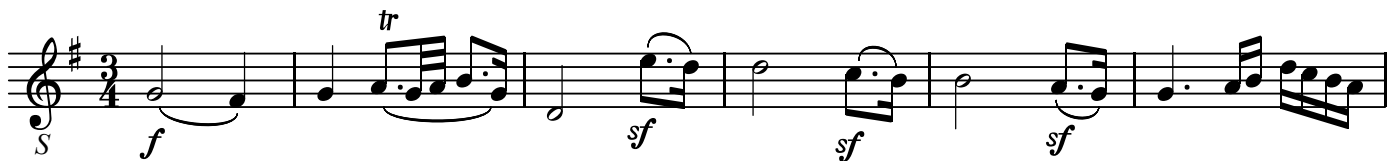


QUARTET KV458 「狩」
2.Menuetto

W.A.Mozart

BK=1



BK=2



BK=3



BK=4



BK=5



BK=6



BK=7



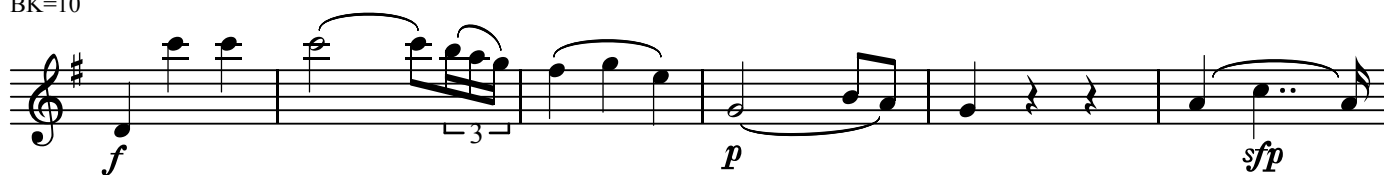
BK=8



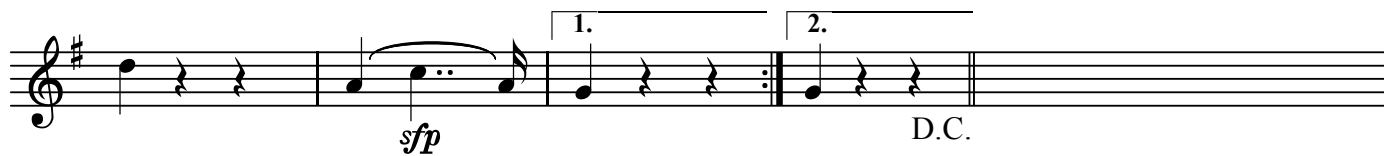
BK=9



BK=10



BK=11

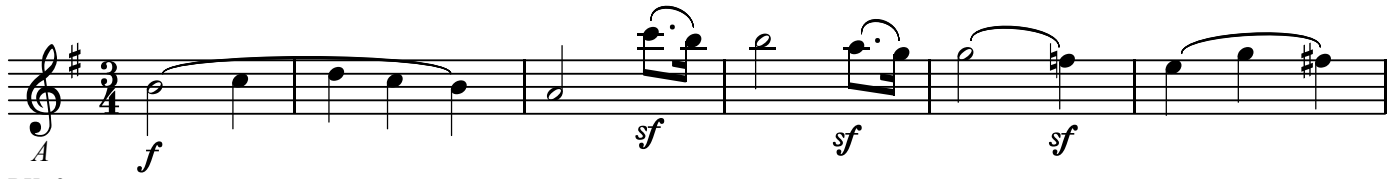


A

QUARTET KV458 「狩」
2.Menuetto

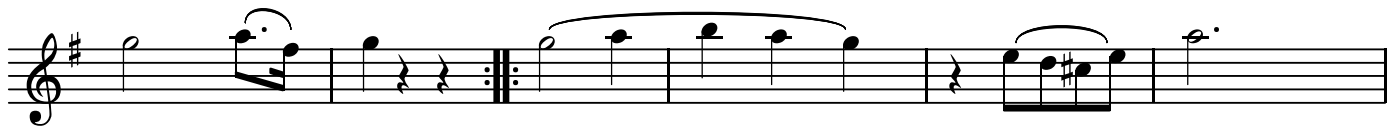
W.A.Mozart

BK=1



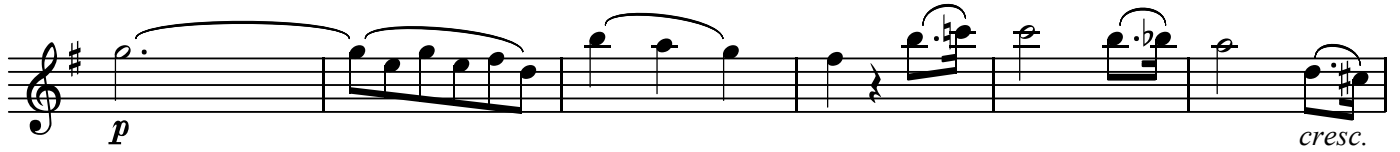
Musical notation for BK=1, starting with a treble clef, a key signature of one sharp (F#), and a 3/4 time signature. The notation includes a first ending bracket and dynamic markings: *f*, *sf*, *p*, *sf*, and *sf*.

BK=2



Musical notation for BK=2, including a repeat sign and dynamic markings: *f*, *sf*, and *sf*.

BK=3



Musical notation for BK=3, including dynamic markings: *p* and *cresc.*

BK=4



Musical notation for BK=4, including dynamic markings: *f*, *sf*, and *sf*.

BK=5



Musical notation for BK=5, including dynamic markings: *sf*, *Fine*, and *p*.

BK=6



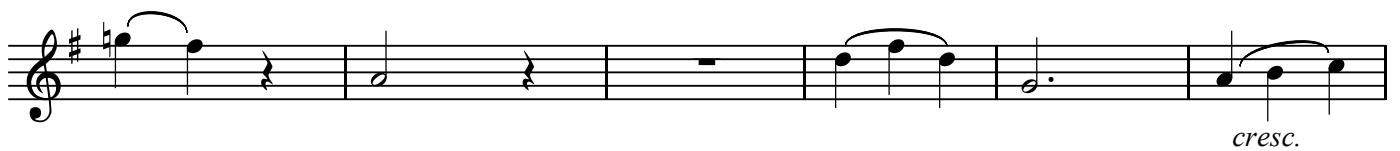
Musical notation for BK=6, including dynamic markings: *f* and *p*.

BK=7



Musical notation for BK=7, including first and second ending brackets and dynamic markings: *f* and *p*.

BK=8



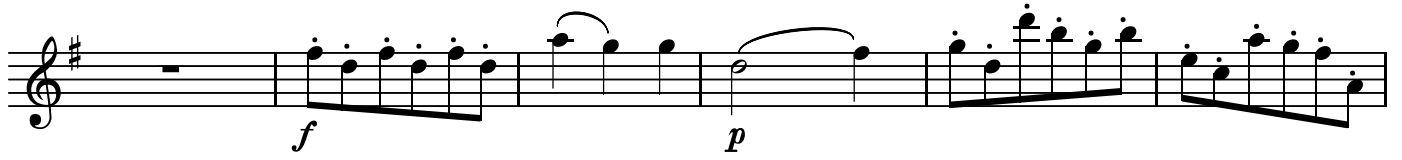
Musical notation for BK=8, including dynamic markings: *cresc.*

BK=9



Musical notation for BK=9, including dynamic markings: *p*

BK=10



BK=11



T

QUARTET KV458 「狩」
2.Menuetto

W.A.Mozart

BK=1

Musical staff for BK=1, starting with a treble clef, a key signature of one sharp (F#), and a 3/4 time signature. The staff contains a melodic line with dynamics *f* and *sf*. A *T* (Trill) marking is present above the first note.

BK=2

Musical staff for BK=2, continuing the melodic line with dynamics *f* and *sf*. It includes a repeat sign with first and second endings.

BK=3

Musical staff for BK=3, continuing the melodic line with dynamics *p* and *cresc.*

BK=4

Musical staff for BK=4, continuing the melodic line with dynamics *f* and *sf*.

BK=5

Musical staff for BK=5, continuing the melodic line with dynamics *p* and *Fine*. It includes a repeat sign with first and second endings.

BK=6

Musical staff for BK=6, continuing the melodic line with dynamics *f* and *p*.

BK=7

Musical staff for BK=7, continuing the melodic line with dynamics *f* and *p*. It includes first and second endings.

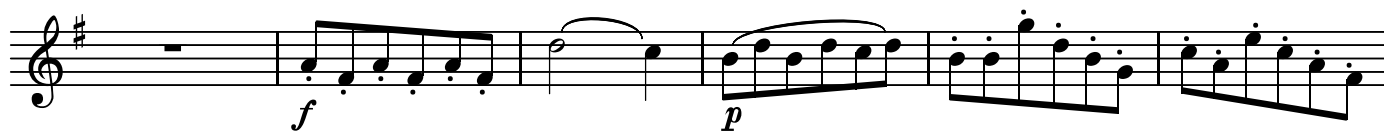
BK=8

Musical staff for BK=8, continuing the melodic line with dynamics *cresc.*

BK=9

Musical staff for BK=9, continuing the melodic line with dynamics *p*.

BK=10



BK=11



QUARTET KV458 「狩」
2.Menuetto

W.A.Mozart

BK=1

First musical staff (BK=1) in bass clef, 3/4 time, key of B major. It begins with a whole rest, followed by a series of eighth notes. Dynamics include *f* and *sf*. A bass clef symbol 'B' is present at the start.

BK=2

Second musical staff (BK=2) in bass clef, 3/4 time, key of B major. It features a repeat sign and continues the melodic line with eighth notes.

BK=3

Third musical staff (BK=3) in bass clef, 3/4 time, key of B major. It starts with a whole rest followed by eighth notes. Dynamics include *p*.

BK=4

Fourth musical staff (BK=4) in bass clef, 3/4 time, key of B major. It begins with a whole rest, followed by eighth notes. Dynamics include *f* and *sf*.

BK=5

Fifth musical staff (BK=5) in bass clef, 3/4 time, key of B major. It continues the melodic line with eighth notes. Dynamics include *sf* and *p*. The staff ends with a double bar line and the word "Fine".

BK=6

Sixth musical staff (BK=6) in bass clef, 3/4 time, key of B major. It features eighth notes and rests. Dynamics include *sfp*.

BK=7

Seventh musical staff (BK=7) in bass clef, 3/4 time, key of B major. It includes first and second endings marked "1." and "2.". Dynamics include *sf*.

BK=8

Eighth musical staff (BK=8) in bass clef, 3/4 time, key of B major. It contains rests followed by eighth notes. Dynamics include *cresc.*

BK=9

Ninth musical staff (BK=9) in bass clef, 3/4 time, key of B major. It begins with a whole rest, followed by eighth notes. Dynamics include *p*.

BK=10

Musical notation for BK=10, bass clef, key signature of one sharp (F#). The staff contains six measures. The first measure is a whole rest. The second measure starts with a forte (*f*) dynamic and contains a quarter note F#2, followed by a slur over two eighth notes G2 and A2. The third measure continues the slur with two eighth notes B2 and C3, followed by a quarter rest. The fourth measure starts with a piano (*p*) dynamic and contains a quarter note D3, followed by a slur over two eighth notes E3 and F#3. The fifth measure continues the slur with two eighth notes G3 and A3. The sixth measure contains a quarter note B3, followed by a slur over two eighth notes C4 and D4.

BK=11

Musical notation for BK=11, bass clef, key signature of one sharp (F#). The staff contains six measures. The first measure is a quarter note F#2, followed by a quarter note G2. The second measure is a quarter note A2, followed by a quarter note B2. The third measure is a quarter note C3, followed by a quarter note D3. The fourth measure is a quarter note E3, followed by a quarter note F#3. The fifth measure is a quarter note G3, followed by a quarter note A3. The sixth measure is a quarter note B3, followed by a quarter note C4. The notation includes first and second endings: a first ending bracket over measures 4 and 5, a repeat sign, and a second ending bracket over measure 6. The piece concludes with the instruction "D.C." (Da Capo).