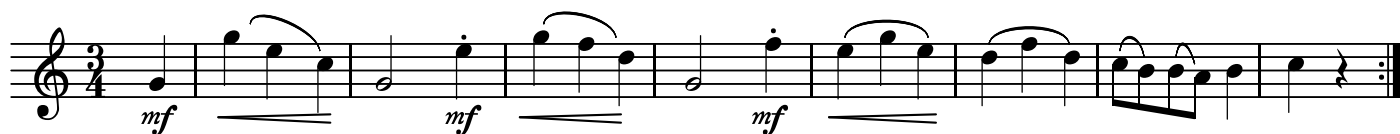


A

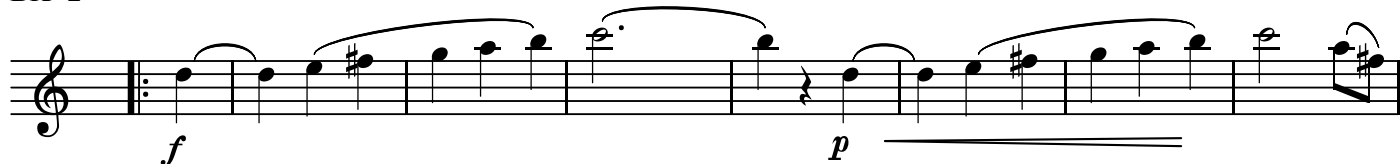
2. Menuetto

BK=1



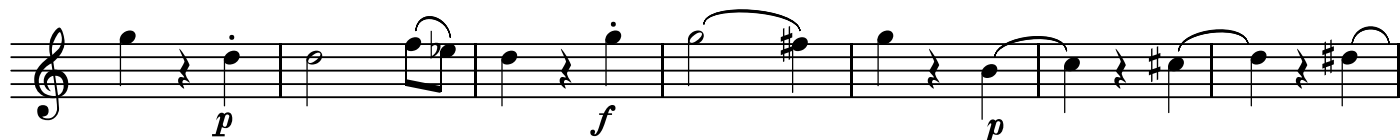
Musical notation for BK=1, starting with a treble clef and a 3/4 time signature. The piece begins with a *mf* dynamic. The melody consists of eighth and quarter notes, some with slurs and accents. The notation ends with a double bar line and repeat dots.

BK=2



Musical notation for BK=2, starting with a treble clef. The piece begins with a *f* dynamic and features a repeat sign. The melody includes slurs and accents, with a *p* dynamic marking later in the phrase.

BK=3



Musical notation for BK=3, starting with a treble clef. The piece begins with a *p* dynamic, followed by a *f* dynamic, and ends with a *p* dynamic. The melody features slurs and accents.

BK=4



Musical notation for BK=4, starting with a treble clef. The piece begins with a *cresc.* marking, followed by a *mf* dynamic. The melody includes slurs and accents.

BK=5




Musical notation for BK=5, starting with a treble clef. The piece includes first and second endings, marked with '1.' and '2.' above the notes. The notation ends with a double bar line and a key signature change to one flat.

BK=6



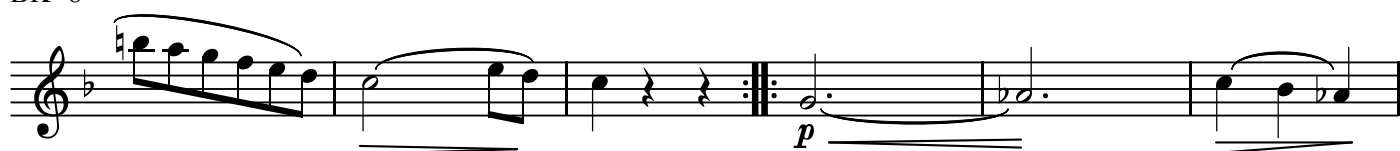
Musical notation for BK=6, starting with a treble clef and a 3/4 time signature. The piece is labeled 'Trio' and begins with a *p* dynamic. The melody features slurs and accents.

BK=7



Musical notation for BK=7, starting with a treble clef. The piece begins with a *f* dynamic. The melody features slurs and accents.

BK=8



Musical notation for BK=8, starting with a treble clef. The piece begins with a *p* dynamic. The melody features slurs and accents.

BK=9



Musical notation for BK=9, starting with a treble clef. The piece begins with a *f* dynamic, followed by a *p* dynamic, and ends with a *f* dynamic. The melody features slurs and accents.

BK=10

Musical notation for BK=10, featuring a treble clef, a key signature of one flat (B-flat), and a 4/4 time signature. The piece consists of six measures. The first measure contains a dotted half note G4. The second measure contains a dotted half note F4. The third measure contains a dotted half note E4. The fourth measure contains a dotted half note D4. The fifth measure contains a quarter note C4, a quarter rest, and a quarter note B3. The sixth measure contains a quarter note A3, a quarter rest, and a quarter note G3. A dynamic marking of *p* (piano) is placed below the second measure.

BK=11

Musical notation for BK=11, featuring a treble clef, a key signature of one flat (B-flat), and a 4/4 time signature. The piece consists of six measures. The first measure contains an eighth-note scale: G4, A4, B4, C5, B4, A4, G4. The second measure contains a quarter note F4, a quarter note E4, and a quarter note D4. The third measure contains a dotted half note C4. The fourth measure contains a dotted half note B3. The fifth measure contains a dotted half note A3. The sixth measure contains a dotted half note G3. A dynamic marking of *f* (forte) is placed below the third measure.

BK=12

Musical notation for BK=12, featuring a treble clef, a key signature of one flat (B-flat), and a 4/4 time signature. The piece consists of six measures. The first measure contains a quarter note G4, a quarter rest, and a quarter note F4. The second measure contains an eighth-note scale: G4, A4, B4, C5, B4, A4, G4. The third measure contains a quarter note F4, a quarter note E4, and a quarter note D4. The fourth measure contains a quarter note C4, a quarter rest, and a quarter note B3. The fifth measure contains an eighth-note scale: G4, A4, B4, C5, B4, A4, G4. The sixth measure contains a quarter note F4, a quarter rest, and a quarter note E4. A dynamic marking of *p* (piano) is placed below the first measure. The piece concludes with a first ending (1.) and a second ending (2.), both marked with repeat signs.

T

2. Menuetto

BK=1



Musical notation for BK=1, featuring a treble clef, 3/4 time signature, and dynamics markings of *mf*. The notation includes eighth and sixteenth notes with slurs and accents.

BK=2



Musical notation for BK=2, featuring a treble clef and dynamics markings of *f* and *p*. The notation includes quarter notes, eighth notes, and slurs.

BK=3



Musical notation for BK=3, featuring a treble clef and dynamics markings of *p* and *f*. The notation includes quarter notes, eighth notes, and slurs.

BK=4



Musical notation for BK=4, featuring a treble clef and dynamics markings of *cresc.* and *mf*. The notation includes quarter notes, eighth notes, and slurs.

BK=5



Musical notation for BK=5, featuring a treble clef and first/second endings. The notation includes quarter notes and rests.

BK=6



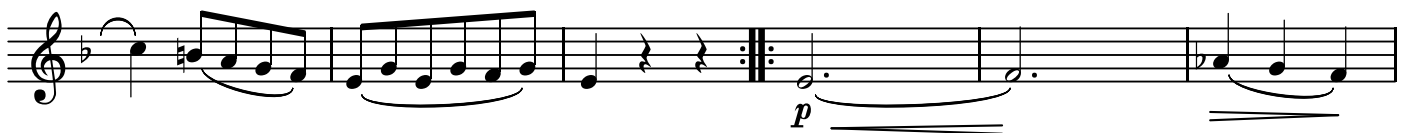
Musical notation for BK=6, featuring a treble clef, 3/4 time signature, and a dynamics marking of *p*. The notation includes quarter notes, eighth notes, and slurs.

BK=7



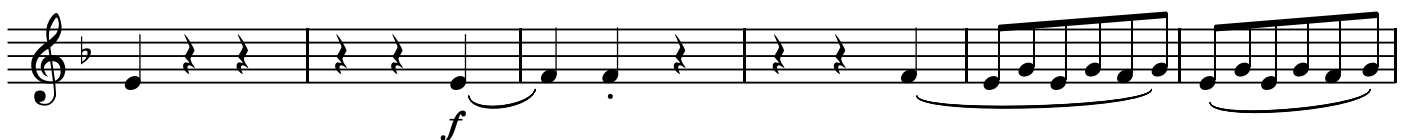
Musical notation for BK=7, featuring a treble clef and a dynamics marking of *f*. The notation includes quarter notes, eighth notes, and slurs.

BK=8



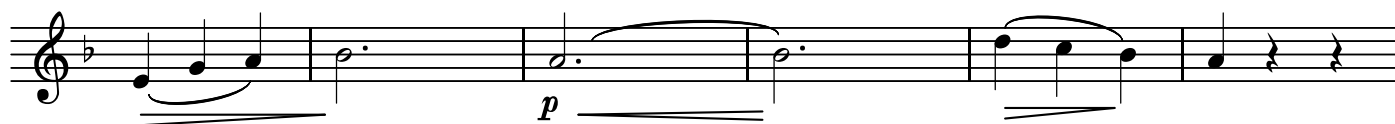
Musical notation for BK=8, featuring a treble clef and a dynamics marking of *p*. The notation includes quarter notes, eighth notes, and slurs.

BK=9



Musical notation for BK=9, featuring a treble clef and a dynamics marking of *f*. The notation includes quarter notes, eighth notes, and slurs.

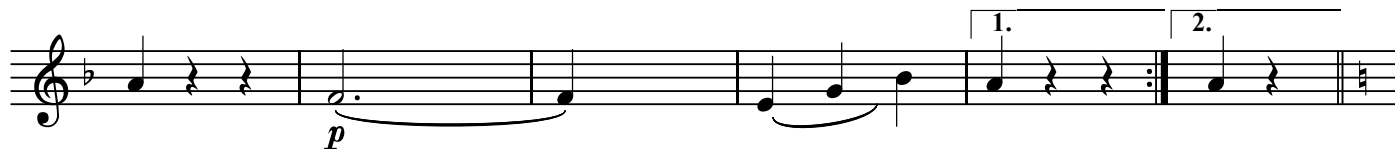
BK=10



BK=11



BK=12



GB

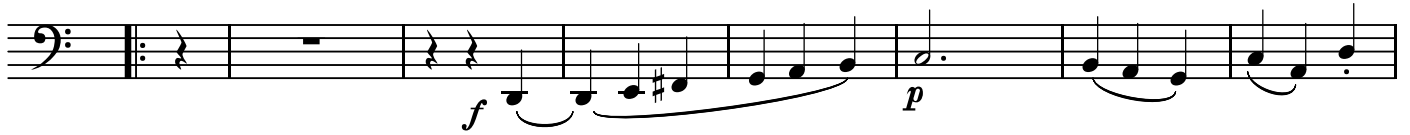
2. Menuetto

BK=1




Musical notation for BK=1, starting with a *mf* dynamic marking.

BK=2



Musical notation for BK=2, featuring dynamics *f* and *p*.

BK=3



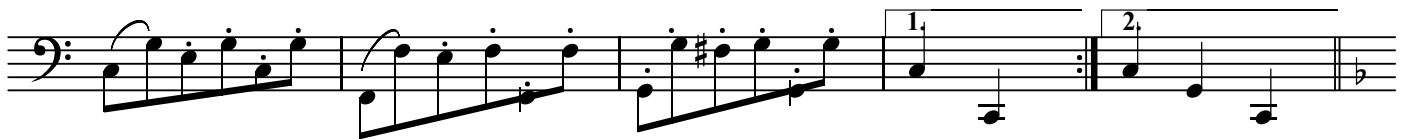
Musical notation for BK=3, featuring dynamics *p*, *f*, and *p*.

BK=4



Musical notation for BK=4, featuring dynamics *cresc.* and *mf*.

BK=5



Musical notation for BK=5, including first and second endings.

BK=6



Musical notation for BK=6, starting with a *p* dynamic marking.

BK=7



Musical notation for BK=7, featuring a *f* dynamic marking.

BK=8



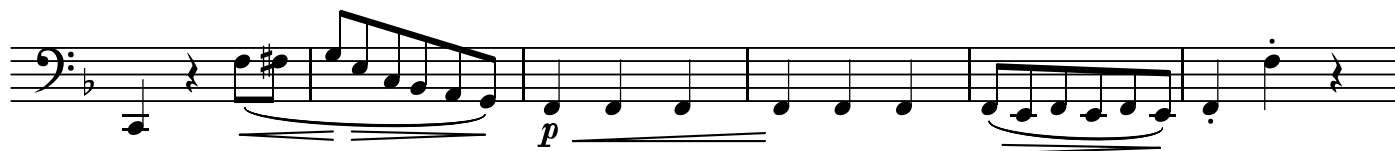
Musical notation for BK=8, featuring a *p* dynamic marking.

BK=9



Musical notation for BK=9, featuring a *f* dynamic marking.

BK=10



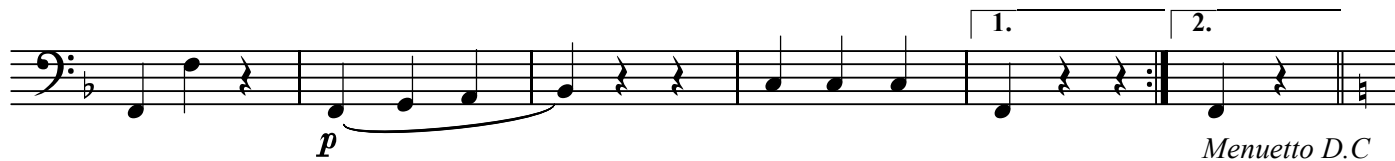
Musical notation for BK=10, bass clef, one flat. The piece begins with a half rest, followed by a quarter note G2. The next measure contains a sixteenth-note triplet (A2, B2, C3) with a slur and a hairpin crescendo. This is followed by a half note D3, a quarter note E3, a quarter note F3, a quarter note G3, a quarter note A3, a quarter note B3, a quarter note C4, and a quarter note D4. The final measure features a sixteenth-note triplet (E4, F4, G4) with a slur and a hairpin decrescendo, followed by a quarter note G4 and a half rest.

BK=11



Musical notation for BK=11, bass clef, one flat. The piece starts with a whole rest. The second measure has a quarter rest, followed by a quarter note G2. The third measure contains a sixteenth-note triplet (A2, B2, C3) with a slur and a hairpin crescendo, followed by a quarter note D3. The fourth measure has a quarter note E3, the fifth has a quarter note F3, the sixth has a quarter note G3, the seventh has a quarter note A3, and the eighth has a quarter note B3.

BK=12



Musical notation for BK=12, bass clef, one flat. The piece begins with a quarter note G2, followed by a quarter rest. The second measure has a quarter note A2, a quarter note B2, and a quarter note C3 with a slur and a hairpin crescendo. The third measure has a quarter note D3, a quarter rest, and a quarter rest. The fourth measure has a quarter note E3, a quarter note F3, and a quarter note G3. The fifth measure has a quarter note A3, a quarter note B3, and a quarter note C4. The sixth measure has a quarter note D4, a quarter rest, and a quarter rest. The seventh measure has a quarter note E4, a quarter note F4, and a quarter note G4. The eighth measure has a quarter note A4, a quarter note B4, and a quarter note C5. The piece concludes with a first ending (1.) and a second ending (2.).

*Menuetto D.C*