

A

5. Rondo

BK=1  
Allegro

Musical staff BK=1, treble clef, 2/4 time signature. The staff begins with a dynamic marking of *f*. The melody consists of eighth and sixteenth notes with slurs and accents. The staff concludes with a repeat sign and a fermata.

BK=2

Musical staff BK=2, treble clef. The staff begins with a dynamic marking of *f*. The melody continues with eighth and sixteenth notes, slurs, and accents. It concludes with a repeat sign and a fermata.

BK=3

Musical staff BK=3, treble clef. The staff begins with a dynamic marking of *p*. The melody features quarter notes and eighth notes, with a section of triplets marked with '3' and a dynamic marking of *p* at the end. It concludes with a repeat sign and a fermata.

BK=4

Musical staff BK=4, treble clef. The staff begins with a dynamic marking of *f*. The melody includes eighth and sixteenth notes with slurs and accents, and a section of triplets marked with '3'. It concludes with a dynamic marking of *p* and a repeat sign with a fermata.

BK=5

Musical staff BK=5, treble clef. The staff begins with a dynamic marking of *f*. The melody consists of eighth and sixteenth notes with slurs and accents. It concludes with a repeat sign and a fermata.

BK=6

Musical staff BK=6, treble clef. The staff begins with a dynamic marking of *f*. The melody continues with eighth and sixteenth notes, slurs, and accents. It concludes with a repeat sign and a fermata.

BK=7

Musical staff BK=7, treble clef. The staff begins with a dynamic marking of *p*. The melody features eighth and sixteenth notes with slurs and accents, and includes a key signature change to one sharp (F#). It concludes with a repeat sign and a fermata.

BK=8

Musical staff BK=8, treble clef. The staff begins with a dynamic marking of *f*. The melody continues with eighth and sixteenth notes, slurs, and accents, and includes a key signature change to one sharp (F#). It concludes with a dynamic marking of *p* and a repeat sign with a fermata.

BK=9

Musical staff BK=9, treble clef. The staff begins with a dynamic marking of *f*. The melody consists of eighth and sixteenth notes with slurs and accents. It concludes with a dynamic marking of *p* and a repeat sign with a fermata.

BK=10



BK=11



BK=12



BK=13



BK=14



BK=15



T

5. Rondo

BK=1



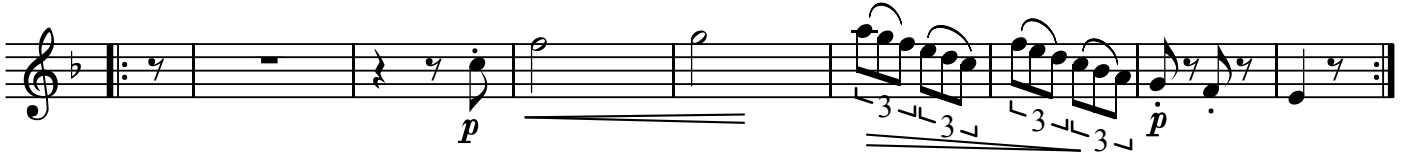
Musical notation for BK=1, starting with a treble clef and a 2/4 time signature. The piece begins with a forte (*f*) dynamic. The melody consists of eighth and sixteenth notes, with accents and slurs. The first measure is a repeat sign. The piece ends with a repeat sign.

BK=2



Musical notation for BK=2, starting with a treble clef. The piece begins with a forte (*f*) dynamic. The melody consists of eighth and sixteenth notes, with accents and slurs. The first measure is a repeat sign. The piece ends with a repeat sign.

BK=3



Musical notation for BK=3, starting with a treble clef and a key signature of one flat. The piece begins with a piano (*p*) dynamic. The melody consists of eighth and sixteenth notes, with accents and slurs. The first measure is a repeat sign. The piece ends with a repeat sign. There are triplets indicated by a '3' and a slur.

BK=4



Musical notation for BK=4, starting with a treble clef and a key signature of one flat. The piece begins with a forte (*f*) dynamic. The melody consists of eighth and sixteenth notes, with accents and slurs. The first measure is a repeat sign. The piece ends with a repeat sign. There is a piano (*p*) dynamic marking in the middle.

BK=5



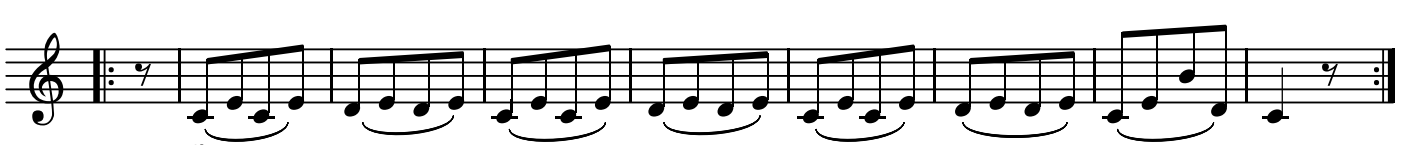
Musical notation for BK=5, starting with a treble clef. The piece begins with a forte (*f*) dynamic. The melody consists of eighth and sixteenth notes, with accents and slurs. The first measure is a repeat sign. The piece ends with a repeat sign.

BK=6



Musical notation for BK=6, starting with a treble clef. The piece begins with a forte (*f*) dynamic. The melody consists of eighth and sixteenth notes, with accents and slurs. The first measure is a repeat sign. The piece ends with a repeat sign.

BK=7



Musical notation for BK=7, starting with a treble clef. The piece begins with a piano (*p*) dynamic. The melody consists of eighth and sixteenth notes, with accents and slurs. The first measure is a repeat sign. The piece ends with a repeat sign.

BK=8



Musical notation for BK=8, starting with a treble clef. The piece begins with a forte (*f*) dynamic. The melody consists of eighth and sixteenth notes, with accents and slurs. The first measure is a repeat sign. The piece ends with a repeat sign. There is a piano (*p*) dynamic marking in the middle.

BK=9



Musical notation for BK=9, starting with a treble clef. The piece begins with a forte (*f*) dynamic. The melody consists of eighth and sixteenth notes, with accents and slurs. The first measure is a repeat sign. The piece ends with a repeat sign.

BK=10



BK=11



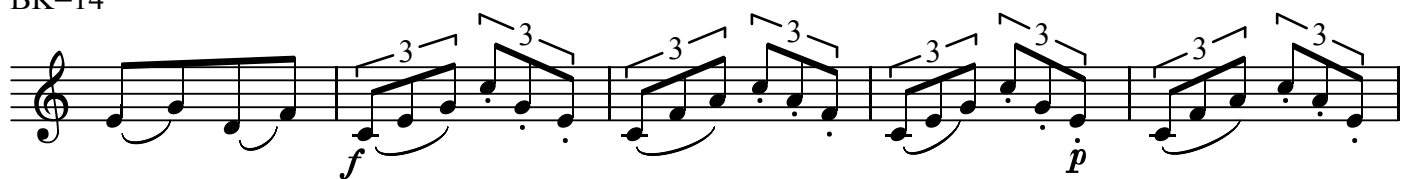
BK=12



BK=13



BK=14



BK=15



GB

5. Rondo

BK=1

First musical staff (BK=1) in bass clef, 2/4 time signature. It begins with a forte (*f*) dynamic. The melody consists of quarter and eighth notes, ending with a repeat sign.

BK=2

Second musical staff (BK=2) in bass clef, 2/4 time signature. It begins with a forte (*f*) dynamic. The melody features a half note followed by quarter notes, ending with a repeat sign.

BK=3

Third musical staff (BK=3) in bass clef, 2/4 time signature. It features a piano (*p*) dynamic and contains several triplet markings over eighth notes. The staff ends with a repeat sign.

BK=4

Fourth musical staff (BK=4) in bass clef, 2/4 time signature. It begins with a forte (*f*) dynamic and includes a piano (*p*) section with triplet markings. The staff ends with a repeat sign.

BK=5

Fifth musical staff (BK=5) in bass clef, 2/4 time signature. It begins with a forte (*f*) dynamic and features a melodic line with quarter and eighth notes, ending with a repeat sign.

BK=6

Sixth musical staff (BK=6) in bass clef, 2/4 time signature. It features a melodic line with quarter and eighth notes, ending with a repeat sign.

BK=7

Seventh musical staff (BK=7) in bass clef, 2/4 time signature. It begins with a piano (*p*) dynamic and features a melodic line with quarter notes, ending with a repeat sign.

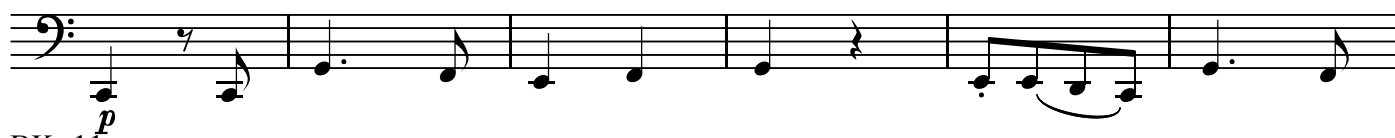
BK=8

Eighth musical staff (BK=8) in bass clef, 2/4 time signature. It begins with a forte (*f*) dynamic and includes a piano (*p*) section with a melodic line of quarter notes, ending with a repeat sign.

BK=9

Ninth musical staff (BK=9) in bass clef, 2/4 time signature. It begins with a forte (*f*) dynamic and features a melodic line with quarter and eighth notes, ending with a repeat sign.

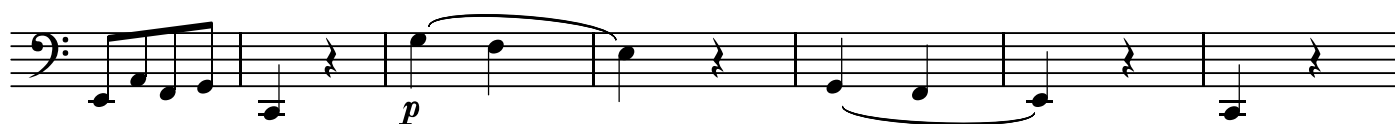
BK=10



BK=11



BK=12



BK=13



BK=14



BK=15

