



T

3. Adagio

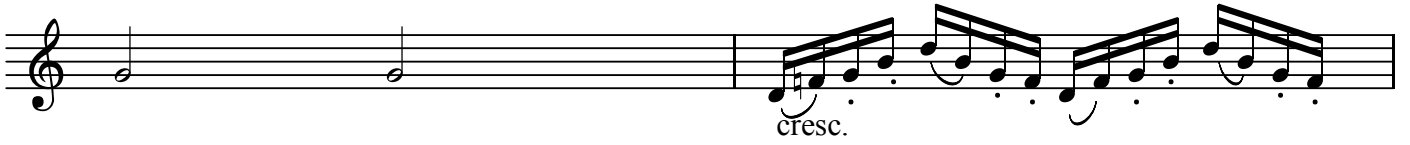
BK=1



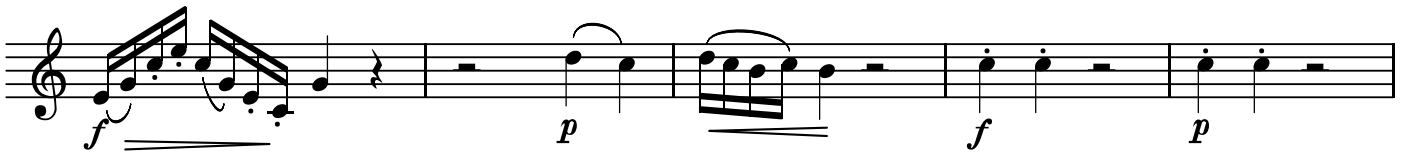
BK=2



BK=3



BK=4



BK=5



GB

3. Adagio

BK=1

First musical staff (BK=1) in bass clef, common time. It begins with a half rest followed by a half note G. The dynamics are marked *p* (piano).

BK=2

Second musical staff (BK=2) in bass clef, common time. It starts with a half note G (*f*), followed by a quarter note G (*p*), a quarter note A (*sfz*), and a quarter note B (*p*). A repeat sign follows, leading to a series of sixteenth-note triplets: G-A-B, A-B-C, B-C-D, C-D-E, D-E-F, and E-F-G, all marked *p*.

BK=3

Third musical staff (BK=3) in bass clef, common time. It continues the triplet pattern from the previous staff, marked *p*. The dynamics then change to *cresc.* (crescendo) for the final two measures.

BK=4

Fourth musical staff (BK=4) in bass clef, common time. It begins with a half note G (*f*), followed by a quarter rest, a quarter note A (*p*), a quarter note B, a quarter note C, a quarter note D, a quarter note E, a quarter note F, and a quarter note G (*p*).

BK=5

Fifth musical staff (BK=5) in bass clef, common time. It starts with a series of sixteenth-note triplets: G-A-B, A-B-C, B-C-D, and C-D-E, marked *f*. This is followed by a half note G, a quarter note A, a quarter note B, a quarter note C, and a quarter note D, all marked *p*.