

A

2. Menuetto

BK=1 Allegretto

Musical staff BK=1, treble clef, 3/4 time signature. Dynamics: *p* (piano) and *f* (forte).

BK=2

Musical staff BK=2, treble clef. Dynamics: *p* (piano).

BK=3

Musical staff BK=3, treble clef. Dynamics: *f* (forte) and *p* (piano).

BK=4

Musical staff BK=4, treble clef. Dynamics: *f* (forte).

BK=5

Musical staff BK=5, treble clef. Dynamics: *p* (piano). Includes first and second endings. Ends with "Fine".

BK=6

Musical staff BK=6, treble clef. Dynamics: *f* (forte), *p* (piano), *f* (forte), *p* (piano). Marked "Trio".

BK=7

Musical staff BK=7, treble clef. Dynamics: *f* (forte) and *p* (piano).

BK=8

Musical staff BK=8, treble clef. Dynamics: *f* (forte) and *p* (piano). Includes first and second endings.

T

2. Menuetto

BK=1



BK=2



BK=3



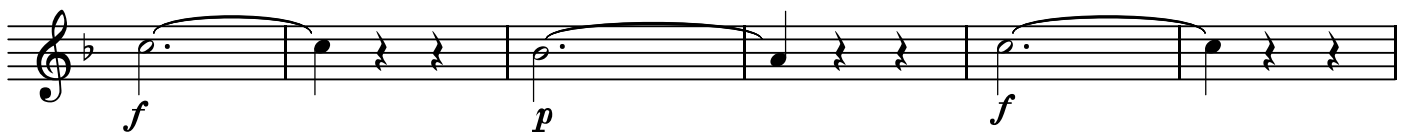
BK=4



BK=5



BK=6



BK=7



BK=8



GB

2. Menuetto

BK=1

Musical staff BK=1, bass clef, 3/4 time signature. The staff contains a sequence of notes starting with a half note G2, followed by a dotted quarter note G2, a quarter note F2, and a quarter note E2. This is followed by a half note D2, a quarter note C2, and a quarter note B1. The piece concludes with a quarter note A1, a quarter note G1, and a quarter note F1. Dynamics include *p* (piano) and *f* (forte).

BK=2

Musical staff BK=2, bass clef, 3/4 time signature. The staff contains a sequence of notes starting with a quarter note G2, a quarter note F2, and a quarter note E2. This is followed by a quarter note D2, a quarter note C2, and a quarter note B1. The piece concludes with a quarter note A1, a quarter note G1, and a quarter note F1. Dynamics include *p* (piano).

BK=3

Musical staff BK=3, bass clef, 3/4 time signature. The staff contains a sequence of notes starting with a quarter note G2, a quarter note F2, and a quarter note E2. This is followed by a quarter note D2, a quarter note C2, and a quarter note B1. The piece concludes with a quarter note A1, a quarter note G1, and a quarter note F1. Dynamics include *f* (forte) and *p* (piano).

BK=4

Musical staff BK=4, bass clef, 3/4 time signature. The staff contains a sequence of notes starting with a quarter note G2, a quarter note F2, and a quarter note E2. This is followed by a quarter note D2, a quarter note C2, and a quarter note B1. The piece concludes with a quarter note A1, a quarter note G1, and a quarter note F1. Dynamics include *p* (piano) and *f* (forte).

BK=5

Musical staff BK=5, bass clef, 3/4 time signature. The staff contains a sequence of notes starting with a quarter note G2, a quarter note F2, and a quarter note E2. This is followed by a quarter note D2, a quarter note C2, and a quarter note B1. The piece concludes with a quarter note A1, a quarter note G1, and a quarter note F1. Dynamics include *p* (piano). The staff ends with a first ending (1.) and a second ending (2.), both leading to a double bar line. The word "Fine" is written below the staff.

BK=6

Musical staff BK=6, bass clef, 3/4 time signature. The staff contains a sequence of notes starting with a quarter note G2, a quarter note F2, and a quarter note E2. This is followed by a quarter note D2, a quarter note C2, and a quarter note B1. The piece concludes with a quarter note A1, a quarter note G1, and a quarter note F1. Dynamics include *f* (forte) and *p* (piano).

BK=7

Musical staff BK=7, bass clef, 3/4 time signature. The staff contains a sequence of notes starting with a quarter note G2, a quarter note F2, and a quarter note E2. This is followed by a quarter note D2, a quarter note C2, and a quarter note B1. The piece concludes with a quarter note A1, a quarter note G1, and a quarter note F1. Dynamics include *p* (piano) and *f* (forte).

BK=8

Musical staff BK=8, bass clef, 3/4 time signature. The staff contains a sequence of notes starting with a quarter note G2, a quarter note F2, and a quarter note E2. This is followed by a quarter note D2, a quarter note C2, and a quarter note B1. The piece concludes with a quarter note A1, a quarter note G1, and a quarter note F1. Dynamics include *f* (forte) and *p* (piano). The staff ends with a first ending (1.) and a second ending (2.), both leading to a double bar line. The text "Menuetto D.C" is written below the staff.