

A

DIVERTIMENT KV439b-1 (KV229-1)
1. Allegro

W.A.Mozart

BK=1

Musical notation for BK=1, measures 1-4. The notation is in treble clef with a 3/4 time signature. It begins with a forte (*f*) dynamic, followed by a piano (*p*) dynamic, and ends with a forte (*f*) dynamic. The melody consists of eighth and sixteenth notes with various articulations.

BK=2

Musical notation for BK=2, measures 5-8. The notation is in treble clef. It begins with a piano (*p*) dynamic and features a long, sweeping melodic line with slurs and ties.

BK=3

Musical notation for BK=3, measures 9-12. The notation is in treble clef. It begins with a piano (*p*) dynamic and includes a crescendo (*cresc.*) marking. The melody features eighth notes and slurs.

BK=4

Musical notation for BK=4, measures 13-16. The notation is in treble clef. It begins with a forte (*f*) dynamic and consists of a series of eighth notes with slurs.

BK=5

Musical notation for BK=5, measures 17-20. The notation is in treble clef. It begins with a piano (*p*) dynamic and features a series of eighth notes with slurs.

BK=6

Musical notation for BK=6, measures 21-24. The notation is in treble clef. It begins with a piano (*p*) dynamic and features a series of eighth notes with slurs and ties.

BK=7

Musical notation for BK=7, measures 25-28. The notation is in treble clef. It begins with a piano (*p*) dynamic and includes a sforzando (*sfz*) marking. The melody features eighth notes and slurs.

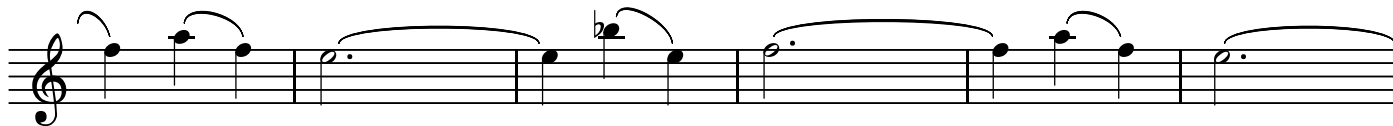
BK=8

Musical notation for BK=8, measures 29-32. The notation is in treble clef. It begins with a sforzando (*sfz*) marking, followed by forte (*f*), piano (*p*), and forte (*f*) dynamics. The melody features eighth notes and slurs.

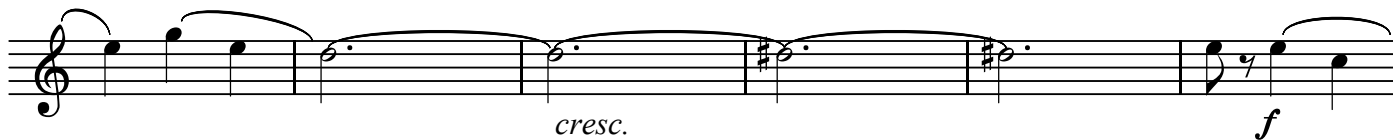
BK=9

Musical notation for BK=9, measures 33-36. The notation is in treble clef. It begins with a forte (*f*) dynamic and includes a piano (*p*) dynamic. The melody features eighth notes and slurs.

BK=10



BK=11



BK=12



BK=13



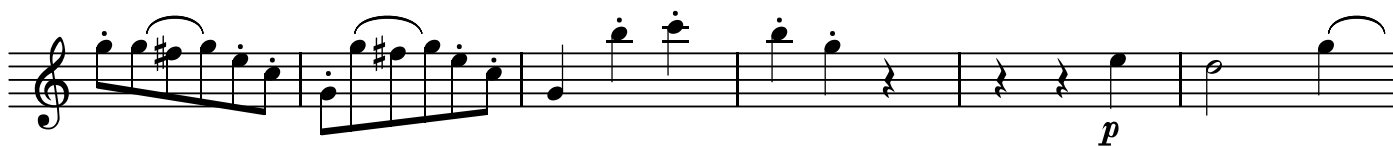
BK=14



BK=15



BK=16



BK=17



BK=18



BK=19



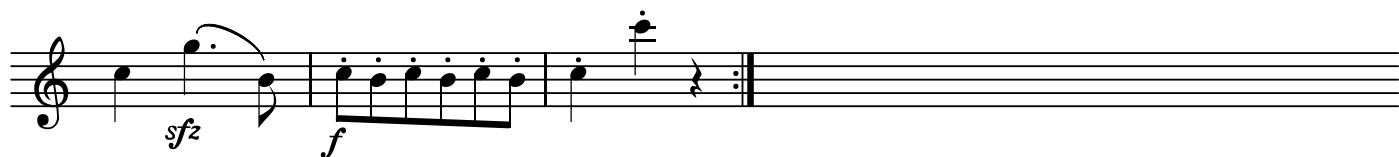
Musical notation for BK=19, featuring a treble clef and a key signature of one sharp (F#). The piece consists of six measures. The first measure contains a quarter note G4 with a fermata. The second measure contains a quarter note A4 with a fermata. The third measure contains a quarter note B4 with a fermata. The fourth measure contains a quarter note C5 with a fermata. The fifth measure contains a quarter note D5 with a fermata. The sixth measure contains a quarter note E5 with a fermata. Dynamics include *sfz* (sforzando) under the first measure, *p* (piano) under the second measure, and *f* (forte) under the fifth measure.

BK=20



Musical notation for BK=20, featuring a treble clef and a key signature of one sharp (F#). The piece consists of six measures. The first measure contains a quarter note G4 with a fermata. The second measure contains a quarter note A4 with a fermata. The third measure contains a quarter note B4 with a fermata. The fourth measure contains a quarter note C5 with a fermata. The fifth measure contains a quarter note D5 with a fermata. The sixth measure contains a quarter note E5 with a fermata. Dynamics include *p* (piano) under the second measure, *tr* (trill) above the fifth measure, and *sfz* (sforzando) under the sixth measure.

BK=21



Musical notation for BK=21, featuring a treble clef and a key signature of one sharp (F#). The piece consists of three measures. The first measure contains a quarter note G4 with a fermata. The second measure contains a quarter note A4 with a fermata. The third measure contains a quarter note B4 with a fermata. Dynamics include *sfz* (sforzando) under the first measure and *f* (forte) under the second measure.

T

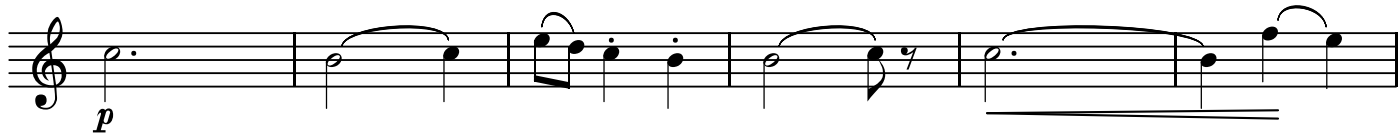
DIVERTIMENT KV439b-1 (KV229-1)
1. Allegro

W.A.Mozart

BK=1



BK=2



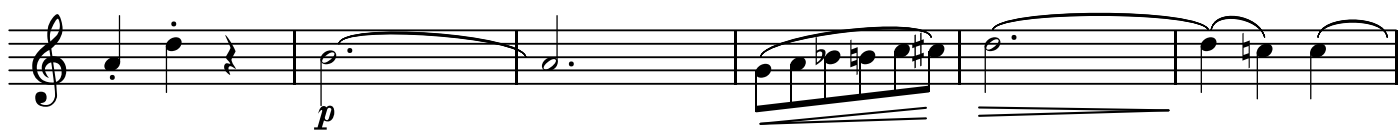
BK=3



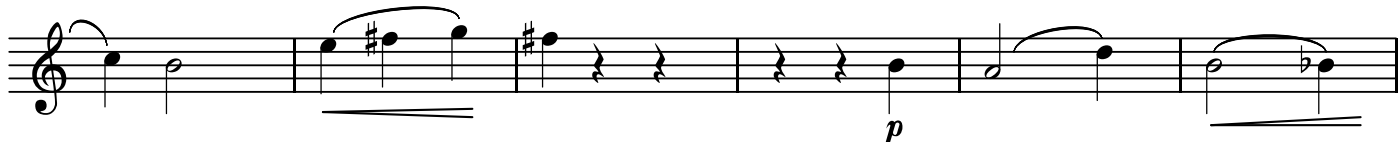
BK=4



BK=5



BK=6



BK=7



BK=8



BK=9



BK=10

Musical notation for BK=10, featuring a treble clef and a series of eighth-note patterns with slurs. The piece begins with a piano (*p*) dynamic marking.

BK=11

Musical notation for BK=11, featuring a treble clef and eighth-note patterns with slurs. The piece includes a crescendo (*cresc.*) and a fortissimo (*f*) dynamic marking.

BK=12

Musical notation for BK=12, featuring a treble clef and eighth-note patterns with slurs. The piece includes a diminuendo (*dim.*) and a fortissimo (*f*) dynamic marking.

BK=13

Musical notation for BK=13, featuring a treble clef and eighth-note patterns with slurs. The piece includes piano (*p*), fortissimo (*f*), and piano (*p*) dynamic markings.

BK=14

Musical notation for BK=14, featuring a treble clef and eighth-note patterns with slurs. The piece includes a piano (*p*) dynamic marking.

BK=15

Musical notation for BK=15, featuring a treble clef and eighth-note patterns with slurs. The piece includes piano (*p*) and crescendo (*cresc.*) dynamic markings.

BK=16

Musical notation for BK=16, featuring a treble clef and eighth-note patterns with slurs. The piece includes a piano (*p*) dynamic marking.

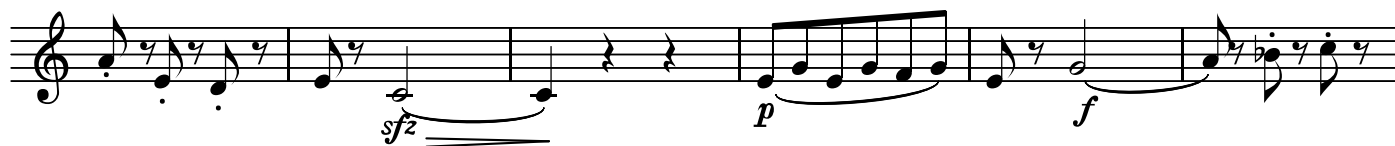
BK=17

Musical notation for BK=17, featuring a treble clef and eighth-note patterns with slurs.

BK=18

Musical notation for BK=18, featuring a treble clef and eighth-note patterns with slurs.

BK=19



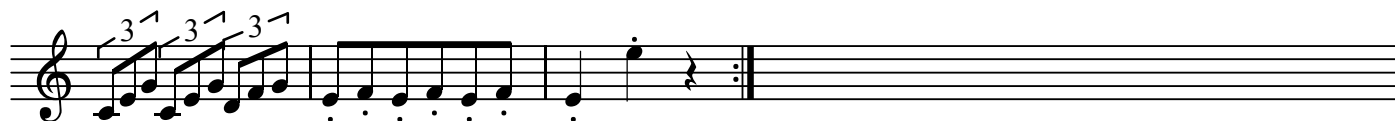
Musical notation for BK=19, featuring a treble clef and a 7/8 time signature. The piece begins with a series of eighth notes, followed by a dynamic marking of *sfz* (sforzando) over a pair of eighth notes. This is followed by a *p* (piano) dynamic marking over a quarter note, and then a *f* (forte) dynamic marking over a quarter note. The notation includes various note values and rests.

BK=20



Musical notation for BK=20, featuring a treble clef and a 7/8 time signature. The piece starts with a *p* (piano) dynamic marking over a quarter note. It continues with a series of eighth notes, followed by a *f* (forte) dynamic marking over a quarter note. The notation includes triplets and various note values.

BK=21



Musical notation for BK=21, featuring a treble clef and a 7/8 time signature. The piece begins with a series of eighth notes, followed by a *f* (forte) dynamic marking over a quarter note. The notation includes triplets and various note values.

GB

DIVERTIMENT KV439b-1 (KV229-1)
1. Allegro

W.A.Mozart

BK=1

First musical staff (BK=1) in bass clef, 3/4 time signature. It begins with a forte (*f*) dynamic. The melody consists of eighth and quarter notes, followed by a rest and a final eighth-note flourish.

BK=2

Second musical staff (BK=2) in bass clef. It begins with a piano (*p*) dynamic. The melody features a series of eighth notes with a slur, followed by a quarter note and a final eighth-note flourish.

BK=3

Third musical staff (BK=3) in bass clef. It features a forte (*f*) dynamic and a series of eighth notes with a slur, followed by a quarter note and a final eighth-note flourish.

BK=4

Fourth musical staff (BK=4) in bass clef. It features a forte (*f*) dynamic and a series of eighth notes with a slur, followed by a quarter note and a final eighth-note flourish.

BK=5

Fifth musical staff (BK=5) in bass clef. It begins with a piano (*p*) dynamic. The melody consists of a half note, followed by a quarter note and a final eighth-note flourish.

BK=6

Sixth musical staff (BK=6) in bass clef. The melody consists of eighth notes with a slur, followed by a quarter note and a final eighth-note flourish.

BK=7

Seventh musical staff (BK=7) in bass clef. The melody consists of eighth notes with a slur, followed by a quarter note and a final eighth-note flourish. It ends with a sforzando (*sf*) dynamic.

BK=8

Eighth musical staff (BK=8) in bass clef. It begins with a piano (*p*) dynamic, followed by a sforzando (*sfz*) dynamic, then a piano (*p*) dynamic, and ends with a forte (*f*) dynamic.

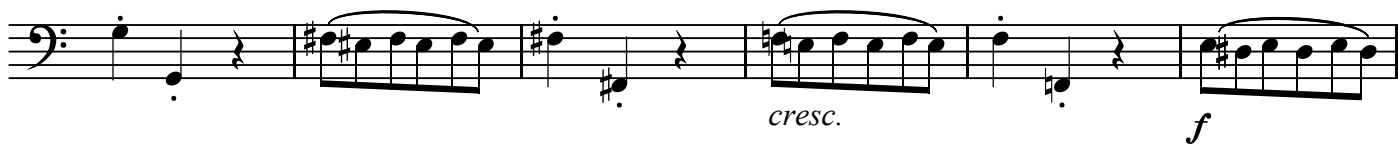
BK=9

Ninth musical staff (BK=9) in bass clef. It begins with a forte (*f*) dynamic, followed by a piano (*p*) dynamic, and ends with a forte (*f*) dynamic.

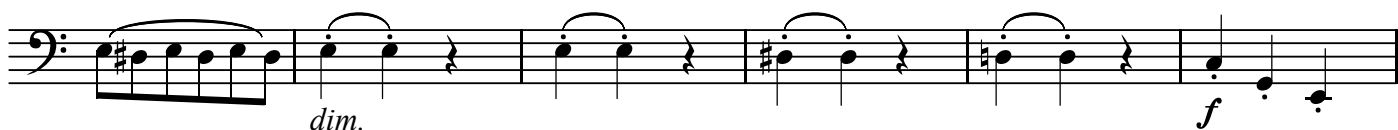
BK=10



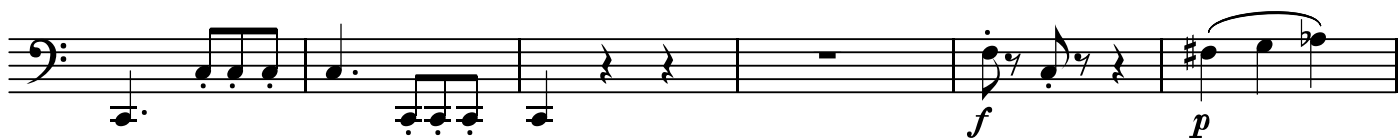
BK=11



BK=12



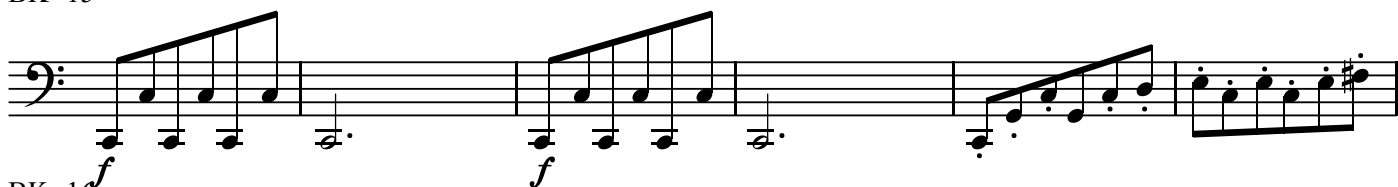
BK=13



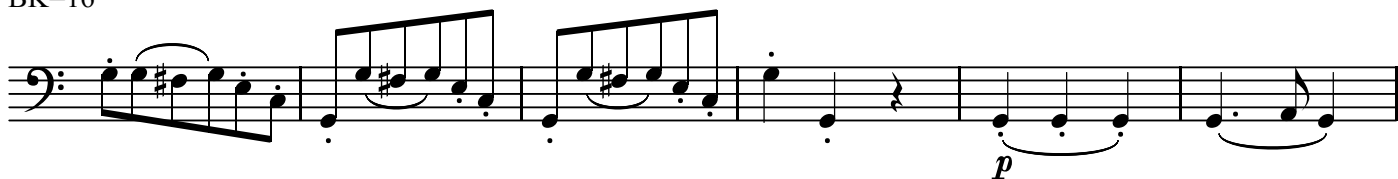
BK=14



BK=15



BK=16



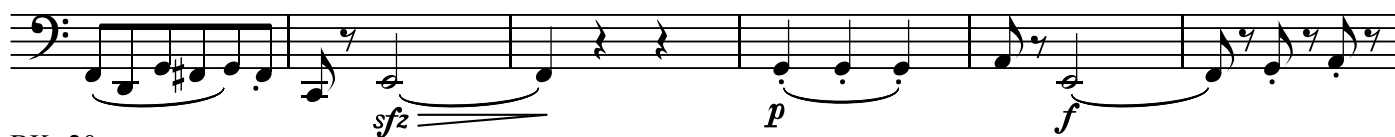
BK=17



BK=18



BK=19



Musical notation for BK=19, featuring a bass clef and a series of notes with dynamic markings *sfz*, *p*, and *f*.

BK=20



Musical notation for BK=20, featuring a bass clef and notes with dynamic markings *p* and *f*.

BK=21



Musical notation for BK=21, featuring a bass clef and notes with a repeat sign.