

SERENADE KV361 "GRAN PARTITA"

1.Largo - Allegro molt

W.A.Mozart

BK=1
Largo

Musical staff BK=1, starting with a treble clef, a key signature of one sharp (F#), and a common time signature (C). The music consists of a sequence of notes with dynamic markings *f* and *p* alternating every two measures.

Musical staff BK=2, starting with a treble clef, a key signature of one sharp (F#), and a common time signature (C). The staff contains rests for the first two measures, followed by a series of eighth notes with a slur.

Musical staff BK=3, starting with a treble clef, a key signature of one sharp (F#), and a common time signature (C). The music features a series of eighth notes with a slur, dynamic markings *p* and *cresc.*

Musical staff BK=4, starting with a treble clef, a key signature of one sharp (F#), and a common time signature (C). The music features a series of eighth notes with a slur, dynamic marking *f*, and a final note with a fermata.

Musical staff BK=5, starting with a treble clef, a key signature of one sharp (F#), and a common time signature (C). The tempo changes to *Allegro molto*. The staff begins with a repeat sign and contains a series of notes with dynamic marking *f*.

Musical staff BK=6, starting with a treble clef, a key signature of one sharp (F#), and a common time signature (C). The music consists of a series of notes with dynamic marking *p*.

Musical staff BK=7, starting with a treble clef, a key signature of one sharp (F#), and a common time signature (C). The music features a series of notes with a slur and dynamic marking *f*.

Musical staff BK=8, starting with a treble clef, a key signature of one sharp (F#), and a common time signature (C). The music features a series of notes with a slur and dynamic markings *fp* and *f*.

Musical staff BK=9, starting with a treble clef, a key signature of one sharp (F#), and a common time signature (C). The staff contains rests for the first two measures, followed by a series of notes.

Musical staff BK=10, starting with a treble clef, a key signature of one sharp (F#), and a common time signature (C). The staff contains rests for the first two measures, followed by a series of notes with dynamic marking *p*.

Musical staff BK=11, starting with a treble clef, a key signature of one sharp (F#), and a common time signature (C). The music features a series of notes with a slur and dynamic marking *f*.

Musical staff BK=12, starting with a treble clef, a key signature of one sharp (F#), and a common time signature (C). The music features a series of notes with a slur.

BK=25



BK=26



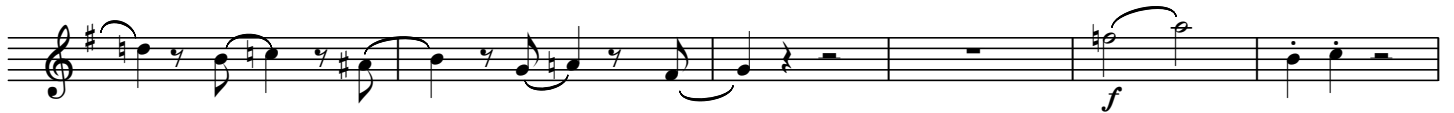
BK=27



BK=28



BK=29



BK=30



BK=31



BK=32



BK=33



BK=34



BK=35



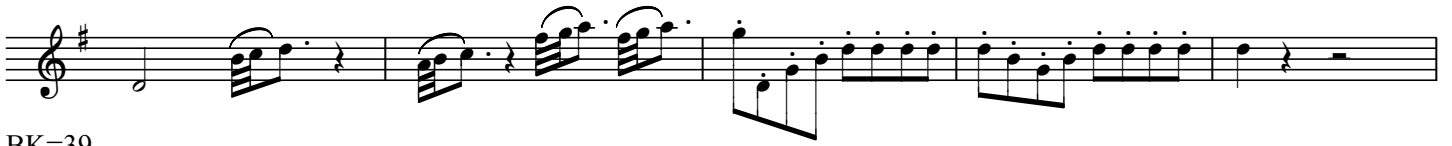
BK=36



BK=37



BK=38



BK=39



BK=40



BK=41



BK=42



BK=43



BK=44



SERENADE KV361 "GRAN PARTITA"

1.Largo - Allegro molt

W.A.Mozart

BK=1

BK=2

BK=3

BK=4

BK=5

BK=6

BK=7

BK=8

BK=9

BK=10

BK=11

BK=12

BK=25



BK=26



BK=27



BK=28



BK=29



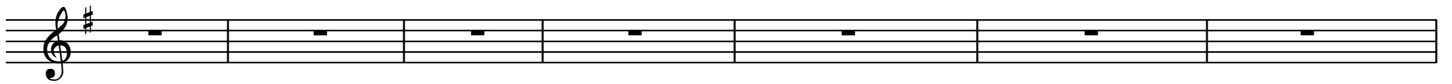
BK=30



BK=31



BK=32



BK=33



BK=34



BK=35



BK=36



BK=37



BK=38



BK=39



BK=40



BK=41



BK=42



BK=43



BK=44



SERENADE KV361 "GRAN PARTITA"

1.Largo - Allegro molt

W.A.Mozart

BK=1

BK=2

BK=3

BK=4

BK=5

BK=6

BK=7

BK=8

BK=9

BK=10

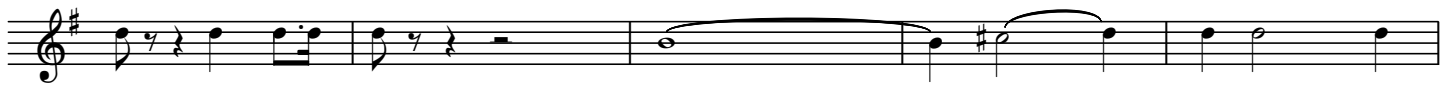
BK=11

BK=12

BK=13



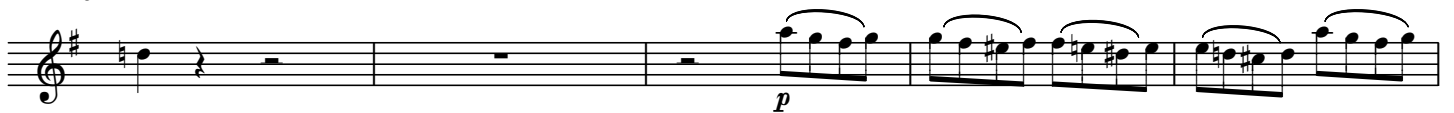
BK=14



BK=15



BK=16



BK=17



BK=18



BK=19



BK=20



BK=21



BK=22



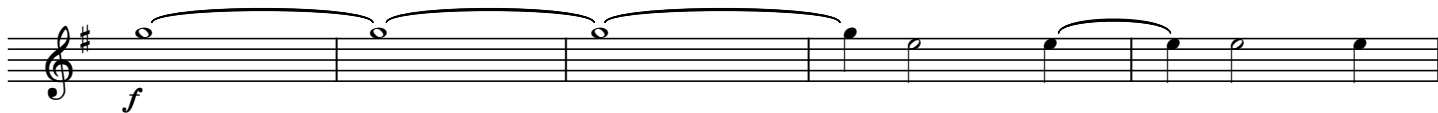
BK=23



BK=24



BK=25



BK=26



BK=27



BK=28



BK=29



BK=30



BK=31



BK=32



BK=33



BK=34



BK=35



BK=36



BK=37



BK=38



BK=39



BK=40



BK=41



BK=42



BK=43



BK=44



SERENADE KV361 "GRAN PARTITA"

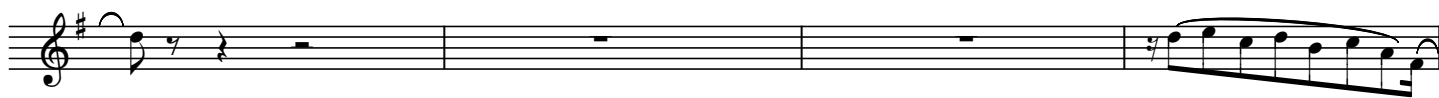
1.Largo - Allegro molt

W.A.Mozart

BK=1



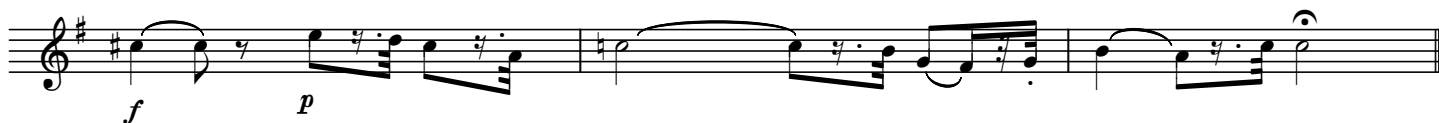
BK=2



BK=3



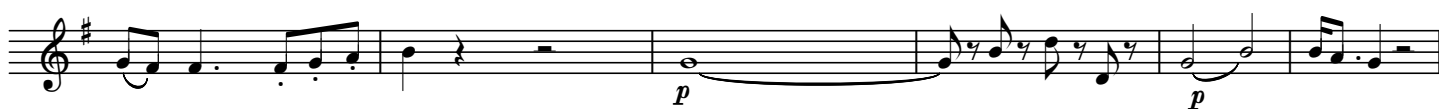
BK=4



BK=5



BK=6



BK=7



BK=8



BK=9



BK=10



BK=11



BK=12



BK=13



BK=14



BK=15



BK=16



BK=17



BK=18



BK=19



BK=20



BK=21



BK=22



BK=23



BK=24



BK=37



BK=38



BK=39



BK=40



BK=41



BK=42



BK=43



BK=44



SERENADE KV361 "GRAN PARTITA"

1.Largo - Allegro molt

W.A.Mozart

BK=1

BK=2

BK=3

BK=4

BK=5

BK=6

BK=7

BK=8

BK=9

BK=10

BK=11

BK=12

BK=25



BK=26



BK=27



BK=28



BK=29



BK=30



BK=31



BK=32



BK=33



BK=34



BK=35



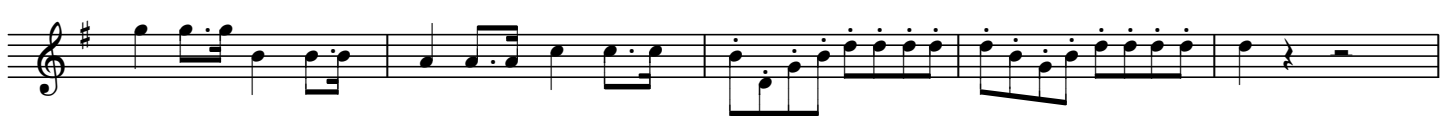
BK=36



BK=37



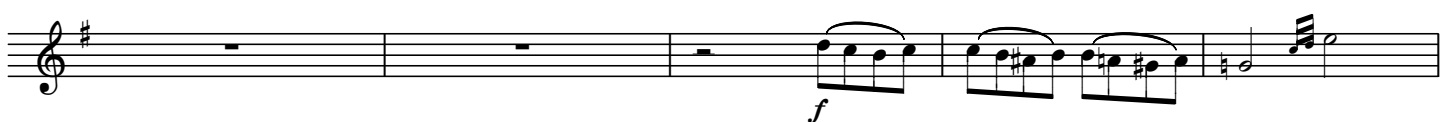
BK=38



BK=39



BK=40



BK=41



BK=42



BK=43



BK=44



SERENADE KV361 "GRAN PARTITA"

1.Largo - Allegro molt

W.A.Mozart

BK=1

BK=2

BK=3

BK=4

BK=5

BK=6

BK=7

BK=8

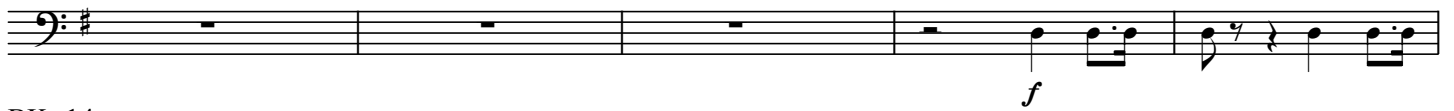
BK=9

BK=10

BK=11

BK=12

BK=13



BK=14



BK=15



BK=16



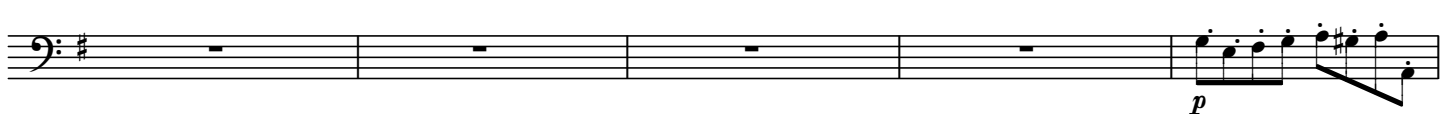
BK=17



BK=18



BK=19



BK=20



BK=21



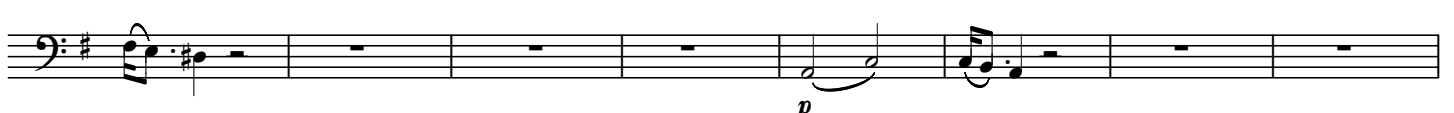
BK=22



BK=23



BK=24



BK=25

Musical notation for BK=25: Bass clef, key signature of one sharp (F#), 4/4 time signature. The piece consists of six measures. The first three measures feature a half-note melody with a slur and a dynamic marking of *f*. The last three measures continue with a half-note melody.

BK=26

Musical notation for BK=26: Bass clef, key signature of one sharp (F#), 4/4 time signature. The piece consists of six measures. The first four measures feature a half-note melody. The fifth and sixth measures are whole rests.

BK=27

Musical notation for BK=27: Bass clef, key signature of one sharp (F#), 4/4 time signature. The piece consists of six measures. The first three measures are whole rests. The last three measures feature a half-note melody with a dynamic marking of *p*.

BK=28

Musical notation for BK=28: Bass clef, key signature of one sharp (F#), 4/4 time signature. The piece consists of six measures. The first four measures feature a half-note melody with a dynamic marking of *f*. The fifth measure features a trill (tr) over a half note. The sixth measure is a whole rest.

BK=29

Musical notation for BK=29: Bass clef, key signature of one sharp (F#), 4/4 time signature. The piece consists of six measures. The first three measures are whole rests. The last three measures feature a half-note melody with dynamic markings of *p* and *f*.

BK=30

Musical notation for BK=30: Bass clef, key signature of one sharp (F#), 4/4 time signature. The piece consists of six measures. The first two measures are whole rests. The last four measures feature a half-note melody.

BK=31

Musical notation for BK=31: Bass clef, key signature of one sharp (F#), 4/4 time signature. The piece consists of six measures. The first four measures feature a half-note melody with dynamic markings of *fp*. The last two measures feature a half-note melody with a dynamic marking of *f*.

BK=32

Musical notation for BK=32: Bass clef, key signature of one sharp (F#), 4/4 time signature. The piece consists of six measures. The first two measures feature a half-note melody with a dynamic marking of *p*. The last four measures feature a half-note melody.

BK=33

Musical notation for BK=33: Bass clef, key signature of one sharp (F#), 4/4 time signature. The piece consists of six measures. The first two measures feature a half-note melody. The last four measures feature a half-note melody.

BK=34

Musical notation for BK=34: Bass clef, key signature of one sharp (F#), 4/4 time signature. The piece consists of six measures. The first four measures feature a half-note melody. The last two measures feature a half-note melody with a dynamic marking of *f*.

BK=35

Musical notation for BK=35: Bass clef, key signature of one sharp (F#), 4/4 time signature. The piece consists of six measures. The first two measures feature a half-note melody. The last four measures feature a half-note melody with a dynamic marking of *p*.

BK=36

Musical notation for BK=36: Bass clef, key signature of one sharp (F#), 4/4 time signature. The piece consists of six measures. The first two measures feature a half-note melody. The last four measures feature a half-note melody with a dynamic marking of *f*.

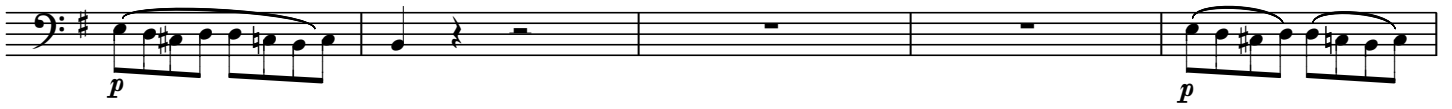
BK=37



BK=38



BK=39



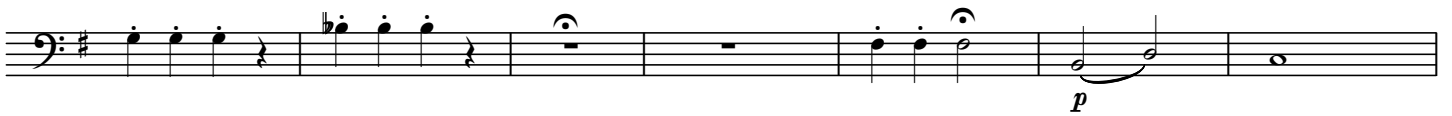
BK=40



BK=41



BK=42



BK=43



BK=44



SERENADE KV361 "GRAN PARTITA"

1.Largo - Allegro molt

W.A.Mozart

BK=1

First musical staff (BK=1) in bass clef, key of D major, 3/4 time. It contains three measures of music. The first measure starts with a forte (*f*) dynamic, followed by a piano (*p*) dynamic. The second measure starts with a forte (*f*) dynamic, followed by a piano (*p*) dynamic. The third measure starts with a forte (*f*) dynamic, followed by a piano (*p*) dynamic.

BK=2

Second musical staff (BK=2) in bass clef, key of D major, 3/4 time. It contains three measures of music. The first two measures are rests. The third measure starts with a forte (*f*) dynamic.

BK=3

Third musical staff (BK=3) in bass clef, key of D major, 3/4 time. It contains three measures of music. The first measure starts with a piano (*p*) dynamic. The second measure is a rest. The third measure starts with a crescendo (*cresc.*) dynamic.

BK=4

Fourth musical staff (BK=4) in bass clef, key of D major, 3/4 time. It contains three measures of music. The first measure starts with a forte (*f*) dynamic. The second measure is a rest. The third measure is a rest.

BK=5

Fifth musical staff (BK=5) in bass clef, key of D major, 3/4 time. It contains three measures of music. The first two measures are rests. The third measure starts with a forte (*f*) dynamic.

BK=6

Sixth musical staff (BK=6) in bass clef, key of D major, 3/4 time. It contains three measures of music. The first measure starts with a piano (*p*) dynamic. The second measure is a rest. The third measure starts with a piano (*p*) dynamic.

BK=7

Seventh musical staff (BK=7) in bass clef, key of D major, 3/4 time. It contains three measures of music. The first measure starts with a forte (*f*) dynamic. The second measure is a rest. The third measure is a rest.

BK=8

Eighth musical staff (BK=8) in bass clef, key of D major, 3/4 time. It contains three measures of music. The first measure starts with a forte piano (*fp*) dynamic. The second measure starts with a forte piano (*fp*) dynamic. The third measure starts with a forte (*f*) dynamic.

BK=9

Ninth musical staff (BK=9) in bass clef, key of D major, 3/4 time. It contains three measures of music. The first measure is a rest. The second measure is a rest. The third measure starts with a forte (*f*) dynamic.

BK=10

Tenth musical staff (BK=10) in bass clef, key of D major, 3/4 time. It contains three measures of music. The first measure starts with a piano (*p*) dynamic. The second measure is a rest. The third measure is a rest.

BK=11

Eleventh musical staff (BK=11) in bass clef, key of D major, 3/4 time. It contains three measures of music. The first two measures are rests. The third measure starts with a forte (*f*) dynamic.

BK=12

Twelfth musical staff (BK=12) in bass clef, key of D major, 3/4 time. It contains three measures of music. The first measure starts with a piano (*p*) dynamic. The second measure is a rest. The third measure is a rest.

BK=13



BK=14



BK=15



BK=16



BK=17



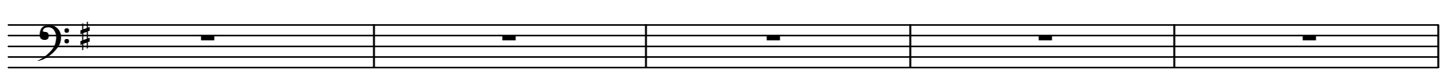
BK=18



BK=19



BK=20



BK=21



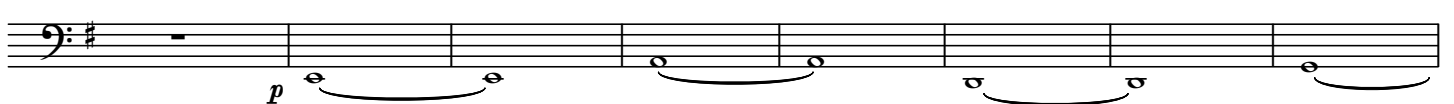
BK=22



BK=23



BK=24



BK=25



BK=26



BK=27



BK=28



BK=29



BK=30



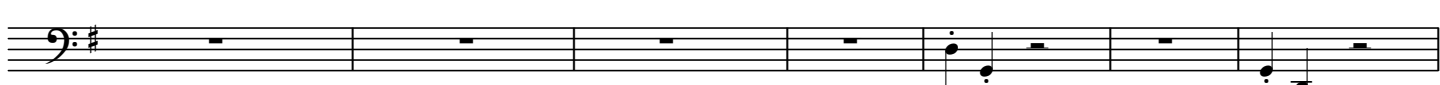
BK=31



BK=32



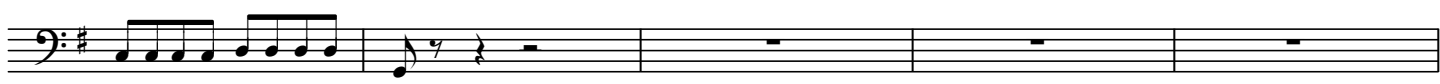
BK=33



BK=34



BK=35



BK=36



BK=37



BK=38



BK=39



BK=40



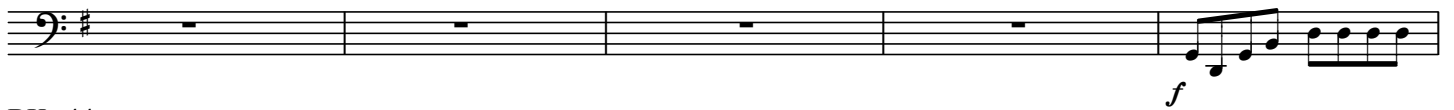
BK=41



BK=42



BK=43



BK=44

