

## DIVERTIMENT KV252

## 1. Andante

W.A.Mozart

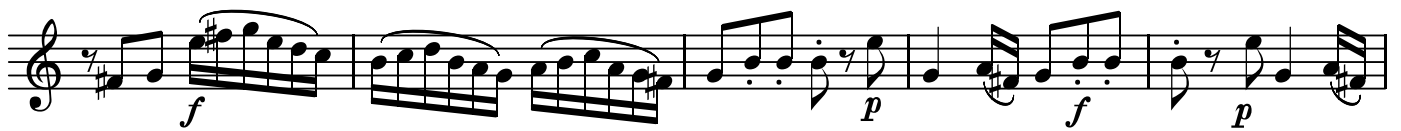
BK=1



BK=2



BK=3



BK=4



BK=5



BK=6



BK=7



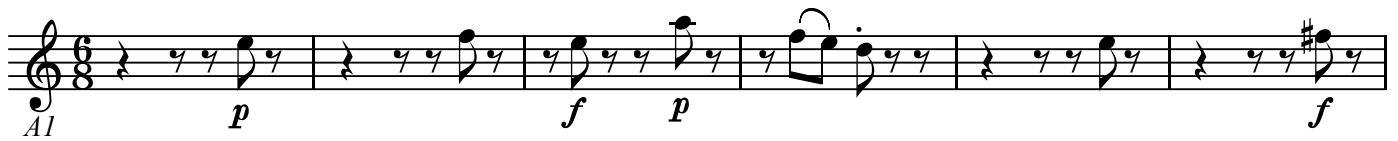
BK=8



DIVERTIMENT KV252  
1. Andante

W.A.Mozart

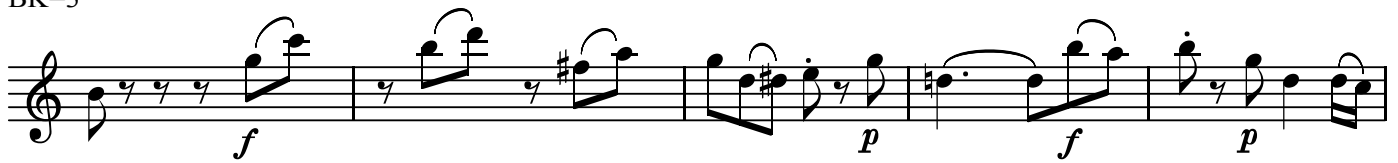
BK=1



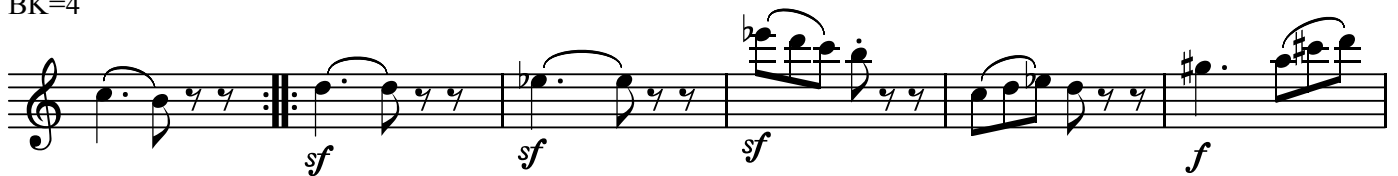
BK=2



BK=3



BK=4



BK=5



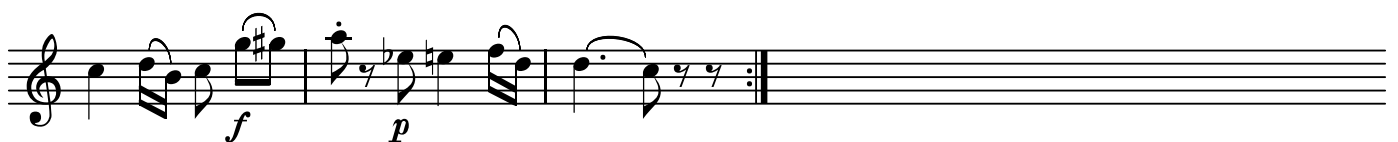
BK=6



BK=7



BK=8



DIVERTIMENT KV252  
1. Andante

W.A.Mozart

BK=1

Musical staff BK=1, treble clef, 6/8 time signature. The staff contains six measures of music. The first measure has a dynamic marking of *p*. The second measure has a dynamic marking of *f*. The third measure has a dynamic marking of *p*. The fourth measure has a dynamic marking of *f*. The fifth measure has a dynamic marking of *p*. The sixth measure has a dynamic marking of *f*. The letter 'A2' is written below the first measure.

BK=2

Musical staff BK=2, treble clef. The staff contains six measures of music. The first measure has a dynamic marking of *p*. The second measure has a dynamic marking of *f*. The third measure has a dynamic marking of *p*. The fourth measure has a dynamic marking of *f*. The fifth measure has a dynamic marking of *p*. The sixth measure has a dynamic marking of *f*.

BK=3

Musical staff BK=3, treble clef. The staff contains six measures of music. The first measure has a dynamic marking of *f*. The second measure has a dynamic marking of *p*. The third measure has a dynamic marking of *f*. The fourth measure has a dynamic marking of *p*. The fifth measure has a dynamic marking of *f*. The sixth measure has a dynamic marking of *p*.

BK=4

Musical staff BK=4, treble clef. The staff contains six measures of music. The first measure has a dynamic marking of *sf*. The second measure has a dynamic marking of *sf*. The third measure has a dynamic marking of *sf*. The fourth measure has a dynamic marking of *sf*. The fifth measure has a dynamic marking of *sf*. The sixth measure has a dynamic marking of *sf*.

BK=5

Musical staff BK=5, treble clef. The staff contains six measures of music. The first measure has a dynamic marking of *p*. The second measure has a dynamic marking of *f*. The third measure has a dynamic marking of *p*. The fourth measure has a dynamic marking of *f*. The fifth measure has a dynamic marking of *p*. The sixth measure has a dynamic marking of *f*.

BK=6

Musical staff BK=6, treble clef. The staff contains six measures of music. The first measure has a dynamic marking of *f*. The second measure has a dynamic marking of *p*. The third measure has a dynamic marking of *f*. The fourth measure has a dynamic marking of *p*. The fifth measure has a dynamic marking of *f*. The sixth measure has a dynamic marking of *f*.

BK=7

Musical staff BK=7, treble clef. The staff contains six measures of music. The first measure has a dynamic marking of *p*. The second measure has a dynamic marking of *f*. The third measure has a dynamic marking of *p*. The fourth measure has a dynamic marking of *f*. The fifth measure has a dynamic marking of *p*. The sixth measure has a dynamic marking of *f*.

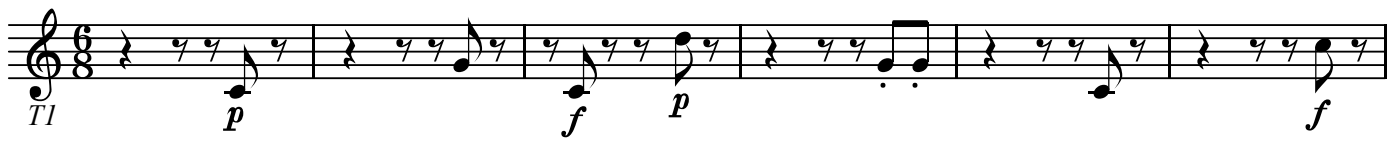
BK=8

Musical staff BK=8, treble clef. The staff contains six measures of music. The first measure has a dynamic marking of *p*. The second measure has a dynamic marking of *f*. The third measure has a dynamic marking of *p*. The fourth measure has a dynamic marking of *f*. The fifth measure has a dynamic marking of *p*. The sixth measure has a dynamic marking of *f*.

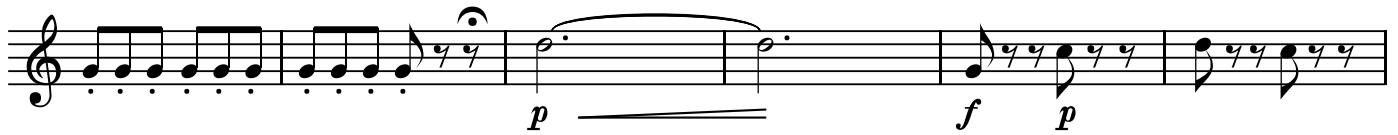
DIVERTIMENT KV252  
1. Andante

W.A.Mozart

BK=1



BK=2



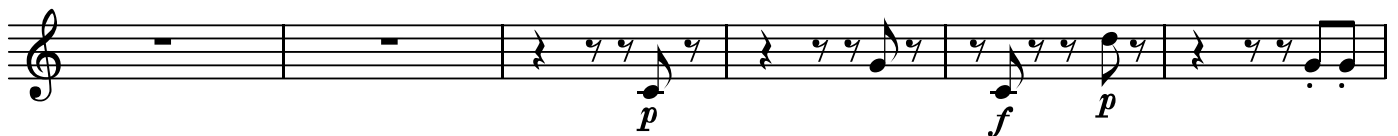
BK=3



BK=4



BK=5



BK=6



BK=7



BK=8



DIVERTIMENT KV252  
1. Andante

W.A.Mozart

BK=1

Musical staff for BK=1, treble clef, 6/8 time signature. The staff contains six measures of music. The first measure has a dynamic marking of *p*. The second measure has *f* and *p*. The fifth measure has *f*. The sixth measure has *f*. A *T2* marking is present below the first measure.

BK=2

Musical staff for BK=2, treble clef. The staff contains six measures of music. The first measure has a dynamic marking of *p*. The second measure has *f*. The fifth measure has *p*. The sixth measure has *p*.

BK=3

Musical staff for BK=3, treble clef. The staff contains six measures of music. The first measure has a dynamic marking of *f*. The second measure has *f*. The third measure has *f*. The fourth measure has *p*. The fifth measure has *f*. The sixth measure has *p*.

BK=4

Musical staff for BK=4, treble clef. The staff contains six measures of music. The first measure has a dynamic marking of *sf*. The second measure has *sf*. The third measure has *sf*. The fourth measure has *f*. The fifth measure has *f*. The sixth measure has *f*.

BK=5

Musical staff for BK=5, treble clef. The staff contains six measures of music. The first measure has a dynamic marking of *p*. The second measure has *p*. The third measure has *f*. The fourth measure has *p*. The fifth measure has *f*. The sixth measure has *f*.

BK=6

Musical staff for BK=6, treble clef. The staff contains six measures of music. The first measure has a dynamic marking of *f*. The second measure has *f*. The third measure has *f*. The fourth measure has *f*. The fifth measure has *p*. The sixth measure has *f*.

BK=7

Musical staff for BK=7, treble clef. The staff contains six measures of music. The first measure has a dynamic marking of *p*. The second measure has *p*. The third measure has *f*. The fourth measure has *f*. The fifth measure has *f*. The sixth measure has *p*.

BK=8

Musical staff for BK=8, treble clef. The staff contains six measures of music. The first measure has a dynamic marking of *f*. The second measure has *p*. The third measure has *p*. The fourth measure has *p*. The fifth measure has *p*. The sixth measure has *p*.

B

DIVERTIMENT KV252  
1. Andante

W.A.Mozart

BK=1

First musical staff (BK=1) in bass clef, 6/8 time signature. It begins with a whole rest followed by eighth notes. Dynamics include *p*, *f*, *p*, and *f*. A *B* (Basso) marking is present at the start.

BK=2

Second musical staff (BK=2) in bass clef. It features eighth notes and a half note with a slur. Dynamics include *p* and *f*.

BK=3

Third musical staff (BK=3) in bass clef. It contains eighth notes and quarter notes with slurs. Dynamics include *f*, *p*, *f*, and *p*.

BK=4

Fourth musical staff (BK=4) in bass clef. It features eighth notes and quarter notes with slurs. Dynamics include *sf*, *sf*, and *f*.

BK=5

Fifth musical staff (BK=5) in bass clef. It begins with a whole rest, followed by eighth notes and quarter notes with slurs. Dynamics include *f* and *p*.

BK=6

Sixth musical staff (BK=6) in bass clef. It features eighth notes and quarter notes with slurs. Dynamics include *f*, *p*, and *f*.

BK=7

Seventh musical staff (BK=7) in bass clef. It contains eighth notes and quarter notes with slurs. Dynamics include *p*, *f*, and *p*.

BK=8

Eighth musical staff (BK=8) in bass clef. It features eighth notes and quarter notes with slurs. Dynamics include *f* and *p*. The staff ends with a double bar line.