







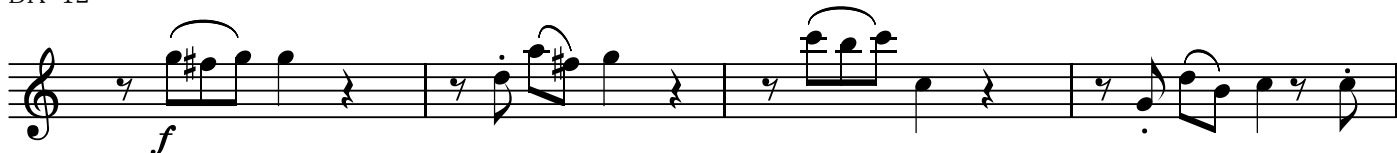
BK=10



BK=11



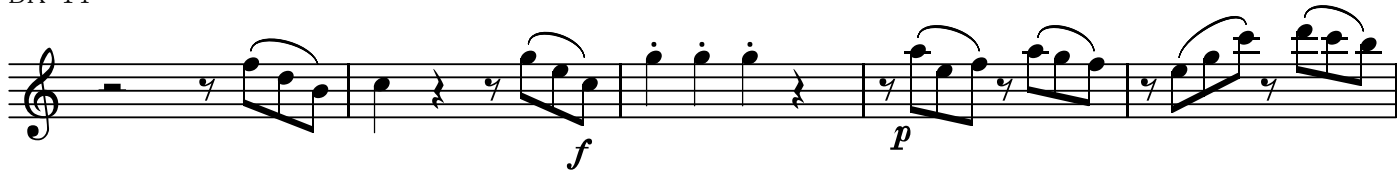
BK=12



BK=13



BK=14



BK=15



BK=16



DIVERTIMENT KV213  
1. Allegro spiritoso

W.A.Mozart

BK=1

Musical staff BK=1, treble clef, common time. The staff begins with a rest, followed by a series of eighth notes and quarter notes. A dynamic marking of *f* (forte) is placed below the first measure.

BK=2

Musical staff BK=2, treble clef, common time. The staff begins with a rest, followed by a series of eighth notes and quarter notes. A dynamic marking of *p* (piano) is placed below the fourth measure.

BK=3

Musical staff BK=3, treble clef, common time. The staff begins with a series of eighth notes, followed by a series of quarter notes. Dynamic markings of *f* (forte) and *p* (piano) are placed below the second and fifth measures, respectively.

BK=4

Musical staff BK=4, treble clef, common time. The staff begins with a series of half notes, followed by a series of quarter notes. Dynamic markings of *f* (forte) and *p* (piano) are placed below the fourth and sixth measures, respectively.

BK=5

Musical staff BK=5, treble clef, common time. The staff begins with a series of quarter notes, followed by a series of half notes. A dynamic marking of *f* (forte) is placed below the fourth measure.

BK=6

Musical staff BK=6, treble clef, common time. The staff begins with a series of eighth notes, followed by a series of half notes. A dynamic marking of *f* (forte) is placed below the first measure.

BK=7

Musical staff BK=7, treble clef, common time. The staff begins with a double bar line, followed by a series of quarter notes. A dynamic marking of *f* (forte) is placed below the second measure.

BK=8

Musical staff BK=8, treble clef, common time. The staff begins with a series of quarter notes, followed by a series of half notes. Dynamic markings of *p* (piano) and *f* (forte) are placed below the second and fifth measures, respectively.

BK=9

Musical staff BK=9, treble clef, common time. The staff begins with a series of quarter notes, followed by a series of eighth notes. A dynamic marking of *f* (forte) is placed below the first measure.

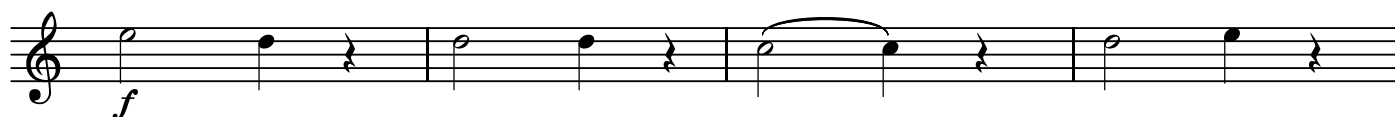
BK=10



BK=11



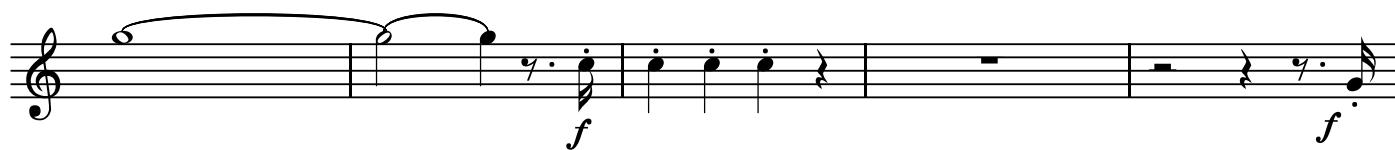
BK=12



BK=13



BK=14



BK=15



BK=16



T

DIVERTIMENT KV213  
1. Allegro spiritoso

W.A.Mozart

BK=1



BK=2



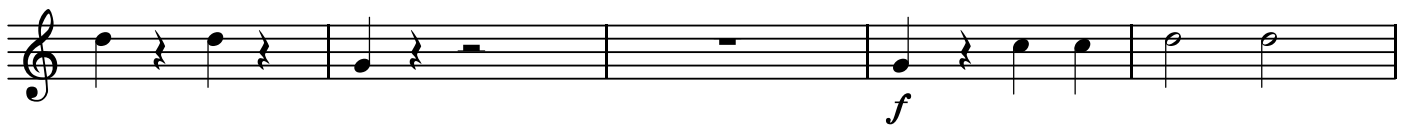
BK=3



BK=4



BK=5



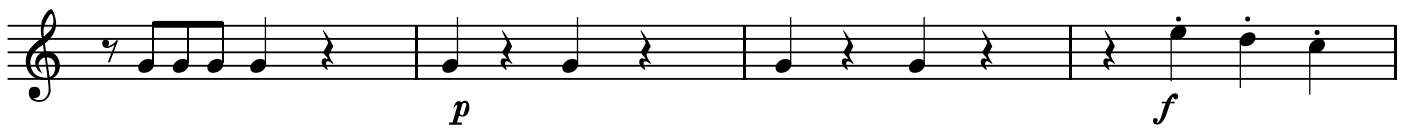
BK=6



BK=7



BK=8



BK=9



BK=10



BK=11



BK=12



BK=13



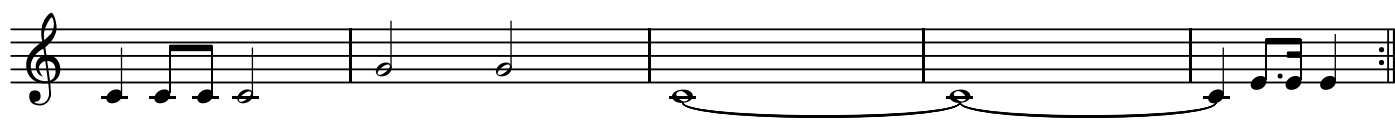
BK=14



BK=15



BK=16









GB

DIVERTIMENT KV213

1. Allegro spiritoso

W.A.Mozart

BK=1

First staff of music (BK=1) in bass clef, common time. It begins with a forte (*f*) dynamic. The melody consists of quarter and eighth notes, with a slur over the final two measures.

BK=2

Second staff of music (BK=2) in bass clef, common time. It begins with a piano (*p*) dynamic. The melody consists of quarter and eighth notes, with a slur over the final two measures.

BK=3

Third staff of music (BK=3) in bass clef, common time. It begins with a forte (*f*) dynamic and ends with a piano (*p*) dynamic. The melody consists of eighth and sixteenth notes, with a slur over the final two measures.

BK=4

Fourth staff of music (BK=4) in bass clef, common time. It begins with a forte (*f*) dynamic. The melody consists of quarter and eighth notes, with a slur over the final two measures.

BK=5

Fifth staff of music (BK=5) in bass clef, common time. It begins with a forte (*f*) dynamic. The melody consists of quarter and eighth notes, with a slur over the final two measures.

BK=6

Sixth staff of music (BK=6) in bass clef, common time. It begins with a forte (*f*) dynamic. The melody consists of eighth and sixteenth notes, with slurs over the final two measures. Dynamics include *sf* and *f*.

BK=7

Seventh staff of music (BK=7) in bass clef, common time. It begins with a forte (*f*) dynamic. The melody consists of quarter and eighth notes, with a slur over the final two measures.

BK=8

Eighth staff of music (BK=8) in bass clef, common time. It begins with a piano (*p*) dynamic. The melody consists of quarter and eighth notes, with a slur over the final two measures. Dynamics include *p* and *f*.

BK=9

Ninth staff of music (BK=9) in bass clef, common time. The melody consists of quarter and eighth notes, with a slur over the final two measures.

