

S1

2.Menuetto

BK=1



Musical notation for BK=1, featuring a treble clef, a key signature of one sharp (F#), and a 3/4 time signature. The melody consists of eighth and quarter notes, ending with a repeat sign.

SI

BK=2



Musical notation for BK=2, featuring a treble clef, a key signature of one sharp (F#), and a 3/4 time signature. The melody includes a repeat sign, a first ending, and a second ending.

BK=3



Musical notation for BK=3, featuring a treble clef, a key signature of one sharp (F#), and a 3/4 time signature. The melody includes a repeat sign and a first ending.

BK=4



Musical notation for BK=4, featuring a treble clef, a key signature of two sharps (F# and C#), and a 3/4 time signature. The melody includes a repeat sign and a first ending. The word *Trio* is written above the staff.

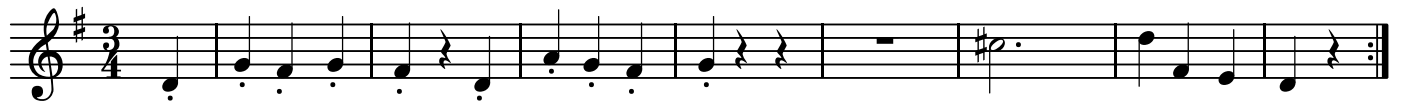
BK=5



Musical notation for BK=5, featuring a treble clef, a key signature of two sharps (F# and C#), and a 3/4 time signature. The melody includes a repeat sign and a first ending.

2.Menuetto

BK=1



Sf
BK=2



BK=3



BK=4



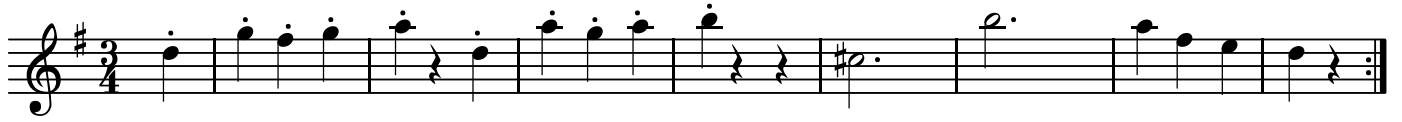
BK=5



A

2.Menuetto

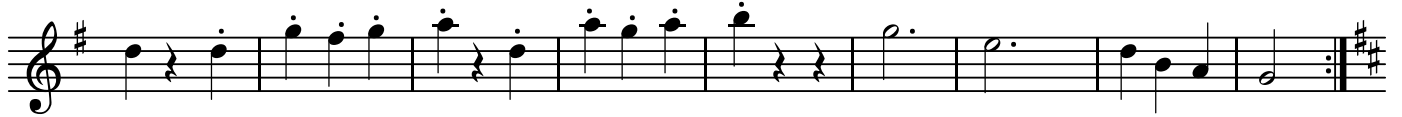
BK=1



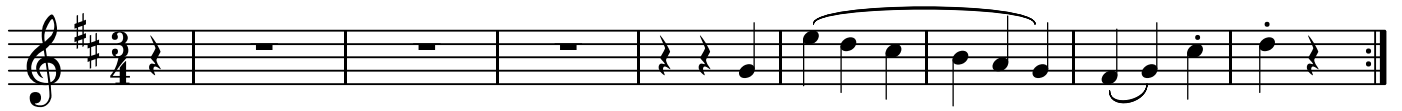
A
BK=2



BK=3



BK=4



BK=5



T

2.Menuetto

BK=1



Musical notation for BK=1, featuring a treble clef, a key signature of one sharp (F#), and a 3/4 time signature. The melody consists of eighth and quarter notes with slurs, ending with a repeat sign.

T
BK=2



Musical notation for BK=2, featuring a treble clef, a key signature of one sharp (F#), and a 3/4 time signature. The melody includes slurs and a repeat sign.

BK=3



Musical notation for BK=3, featuring a treble clef, a key signature of one sharp (F#), and a 3/4 time signature. The melody consists of eighth and quarter notes with slurs, ending with a repeat sign.

BK=4



Musical notation for BK=4, featuring a treble clef, a key signature of two sharps (F# and C#), and a 3/4 time signature. The melody includes slurs and a repeat sign.

BK=5



Musical notation for BK=5, featuring a treble clef, a key signature of two sharps (F# and C#), and a 3/4 time signature. The melody includes slurs and a repeat sign.

GB

2.Menuetto

BK=1



Musical notation for BK=1, bass clef, 3/4 time signature, key signature of one sharp (F#). The notation consists of a single staff with a series of notes and rests, ending with a double bar line and repeat dots.

BK=2



Musical notation for BK=2, bass clef, 3/4 time signature, key signature of one sharp (F#). The notation consists of a single staff with a series of notes, ending with a double bar line and repeat dots.

BK=3



Musical notation for BK=3, bass clef, 3/4 time signature, key signature of one sharp (F#). The notation consists of a single staff with a series of notes and rests, ending with a double bar line and repeat dots.

BK=4



Musical notation for BK=4, bass clef, 3/4 time signature, key signature of one sharp (F#). The notation consists of a single staff with a series of notes and rests, ending with a double bar line and repeat dots.

BK=5



Musical notation for BK=5, bass clef, 3/4 time signature, key signature of one sharp (F#). The notation consists of a single staff with a series of notes and rests, ending with a double bar line and repeat dots.

Menuetto D.C