

QUARTETT KV157

1. Allegro

BK=1

Musical staff BK=1, starting with a treble clef and a common time signature (C). The first measure is marked with a dynamic of *p* (piano) and includes a *S* (sforzando) marking. The staff contains a series of eighth and sixteenth notes.

BK=2

Musical staff BK=2, continuing the melody with a dynamic of *f* (forte) in the final measure.

BK=3

Musical staff BK=3, featuring a complex rhythmic pattern with many sixteenth notes.

BK=4

Musical staff BK=4, continuing the complex rhythmic pattern with many sixteenth notes.

BK=5

Musical staff BK=5, featuring a series of eighth notes and rests.

BK=6

Musical staff BK=6, featuring a trill (*tr*) and a series of sixteenth notes.

BK=7

Musical staff BK=7, featuring a trill (*tr*) and a series of sixteenth notes, with a dynamic of *p* (piano) in the final measure.

BK=8

Musical staff BK=8, featuring a series of whole notes with a dynamic of *p* (piano).

BK=9

Musical staff BK=9, featuring a series of sixteenth notes and rests.

BK=10

Musical staff BK=10, featuring a series of eighth notes with a dynamic of *f* (forte) and *p* (piano) alternating, ending with a dynamic of *p* (piano).

BK=11



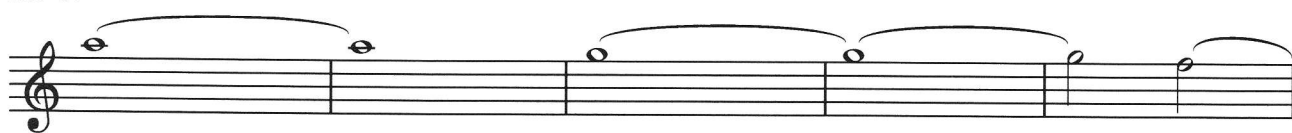
BK=12



BK=13



BK=14



BK=15



BK=16



BK=17



BK=18



BK=19



BK=20



BK=21



BK=22



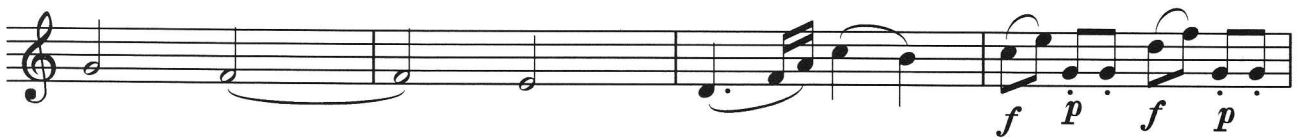
BK=23



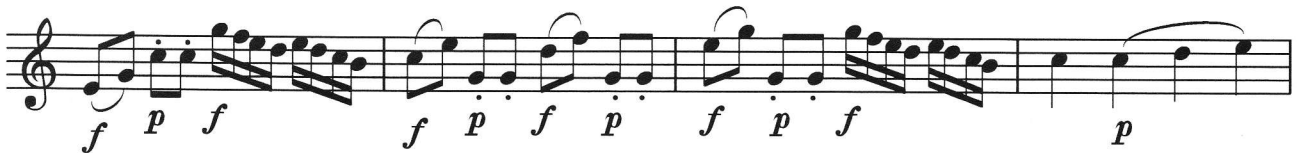
BK=24



BK=25



BK=26



BK=27



A

QUARTETT KV157

1. Allegro

BK=1

Musical staff BK=1, Treble clef, C major, 2/4 time. The staff begins with a dynamic marking of *p*. The melody consists of eighth and quarter notes with various articulations.

BK=2

Musical staff BK=2, Treble clef, C major, 2/4 time. The staff begins with a dynamic marking of *f*. The melody continues with eighth and quarter notes.

BK=3

Musical staff BK=3, Treble clef, C major, 2/4 time. The staff features a more complex rhythmic pattern with sixteenth notes and eighth notes.

BK=4

Musical staff BK=4, Treble clef, C major, 2/4 time. The staff continues the melodic line with eighth and quarter notes.

BK=5

Musical staff BK=5, Treble clef, C major, 2/4 time. The staff features a melodic line with some rests and eighth notes.

BK=6

Musical staff BK=6, Treble clef, C major, 2/4 time. The staff includes trills marked with *tr* and features eighth and quarter notes.

BK=7

Musical staff BK=7, Treble clef, C major, 2/4 time. The staff begins with a dynamic marking of *p*. The melody consists of eighth and quarter notes.

BK=8

Musical staff BK=8, Treble clef, C major, 2/4 time. The staff features a melodic line with eighth and quarter notes.

BK=9

Musical staff BK=9, Treble clef, C major, 2/4 time. The staff continues the melodic line with eighth and quarter notes.

BK=10

Musical staff BK=10, Treble clef, C major, 2/4 time. The staff begins with a dynamic marking of *f* and ends with a dynamic marking of *p*. The melody consists of eighth and quarter notes.

BK=11



BK=12



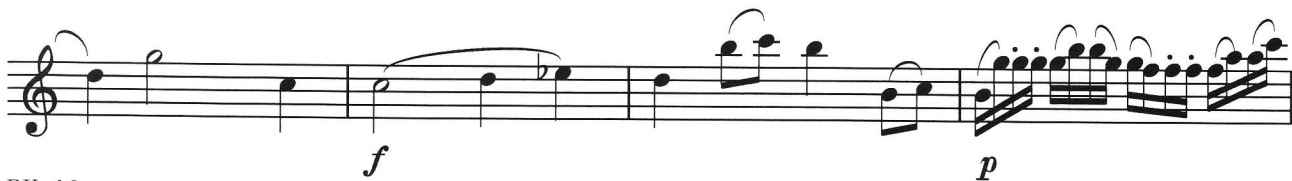
BK=13



BK=14



BK=15



BK=16



BK=17



BK=18



BK=19



BK=20



BK=21



BK=22



BK=23



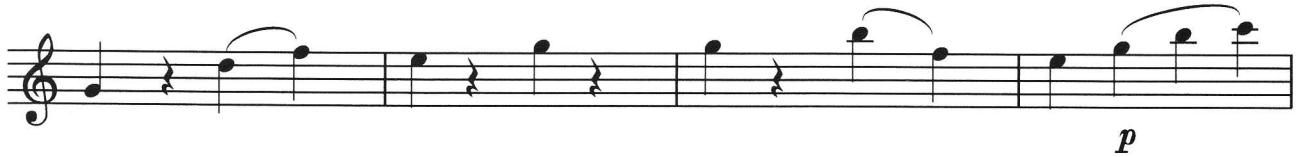
BK=24



BK=25



BK=26



BK=27



T

QUARTETT KV157

1. Allegro

BK=1

Musical staff for BK=1, starting with a treble clef, common time signature (C), and a dynamic marking of *p*. The staff contains a series of notes, including a half note, a quarter note, and several eighth notes, with some notes beamed together.

BK=2

Musical staff for BK=2, starting with a treble clef. The staff contains a series of notes, including a half note, a quarter note, and several eighth notes, with some notes beamed together. A dynamic marking of *f* is present below the staff.

BK=3

Musical staff for BK=3, starting with a treble clef. The staff contains a series of notes, including a half note, a quarter note, and several eighth notes, with some notes beamed together.

BK=4

Musical staff for BK=4, starting with a treble clef. The staff contains a series of notes, including a half note, a quarter note, and several eighth notes, with some notes beamed together.

BK=5

Musical staff for BK=5, starting with a treble clef. The staff contains a series of notes, including a half note, a quarter note, and several eighth notes, with some notes beamed together.

BK=6

Musical staff for BK=6, starting with a treble clef. The staff contains a series of notes, including a half note, a quarter note, and several eighth notes, with some notes beamed together. Trills are indicated by 'tr' above the notes.

BK=7

Musical staff for BK=7, starting with a treble clef. The staff contains a series of notes, including a half note, a quarter note, and several eighth notes, with some notes beamed together. A dynamic marking of *p* is present below the staff.

BK=8

Musical staff for BK=8, starting with a treble clef. The staff contains a series of notes, including a half note, a quarter note, and several eighth notes, with some notes beamed together.

BK=9

Musical staff for BK=9, starting with a treble clef. The staff contains a series of notes, including a half note, a quarter note, and several eighth notes, with some notes beamed together.

BK=10

Musical staff for BK=10, starting with a treble clef. The staff contains a series of notes, including a half note, a quarter note, and several eighth notes, with some notes beamed together. Dynamic markings of *f* and *p* are present below the staff.

BK=11



BK=12



BK=13



BK=14



BK=15



BK=16



BK=17



BK=18



BK=19



BK=20



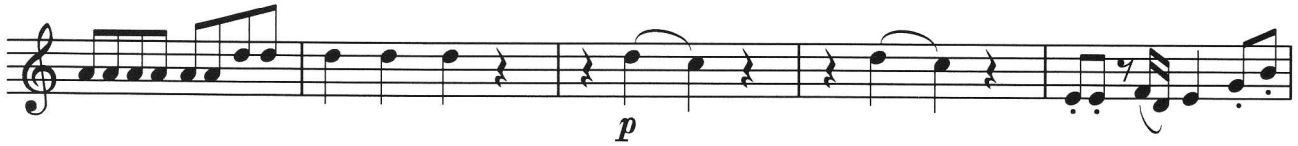
BK=21



BK=22



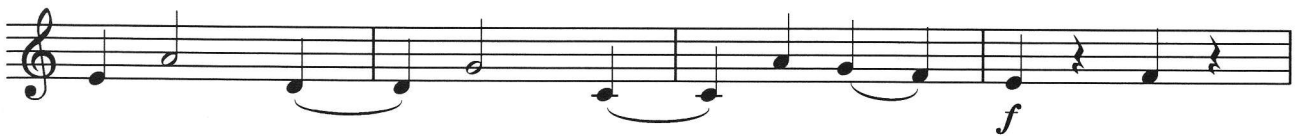
BK=23



BK=24



BK=25



BK=26



BK=27



B

QUARTETT KV157

1. Allegro

BK=1

First musical staff (BK=1) in bass clef, common time. It begins with a piano (*p*) dynamic. The staff contains a series of eighth-note patterns and rests.

BK=2

Second musical staff (BK=2) in bass clef, common time. It features a forte (*f*) dynamic. The staff contains a series of eighth-note patterns and rests.

BK=3

Third musical staff (BK=3) in bass clef, common time. It contains a series of eighth-note patterns and rests.

BK=4

Fourth musical staff (BK=4) in bass clef, common time. It contains a series of eighth-note patterns and rests.

BK=5

Fifth musical staff (BK=5) in bass clef, common time. It contains a series of eighth-note patterns and rests.

BK=6

Sixth musical staff (BK=6) in bass clef, common time. It contains a series of eighth-note patterns and rests.

BK=7

Seventh musical staff (BK=7) in bass clef, common time. It features a piano (*p*) dynamic. The staff contains a series of eighth-note patterns and rests.

BK=8

Eighth musical staff (BK=8) in bass clef, common time. It contains a series of eighth-note patterns and rests.

BK=9

Ninth musical staff (BK=9) in bass clef, common time. It contains a series of eighth-note patterns and rests.

BK=10

Tenth musical staff (BK=10) in bass clef, common time. It begins with a forte (*f*) dynamic and ends with a piano (*p*) dynamic. The staff contains a series of eighth-note patterns and rests.

BK=11



BK=12



BK=13



BK=14



BK=15



BK=16



BK=17



BK=18



BK=19



BK=20



BK=21



BK=22



BK=23



BK=24



BK=25



BK=26



BK=27

