

3.Molto Allegro

BK=1
Allegro

First musical staff (BK=1) in treble clef, 2/4 time signature. It begins with a forte (*f*) dynamic marking. The melody starts with a quarter note G4, followed by eighth notes A4, B4, C5, and a dotted quarter note B4. The piece is marked 'Allegro'.

BK=2

Second musical staff (BK=2) in treble clef, 2/4 time signature. The melody continues from the previous staff, starting with a quarter note G4 and eighth notes A4, B4, C5, and a dotted quarter note B4.

BK=3

Third musical staff (BK=3) in treble clef, 2/4 time signature. This staff features complex rhythmic patterns with many triplets and slurs. It starts with a quarter note G4 and eighth notes A4, B4, C5, and a dotted quarter note B4.

BK=4

Fourth musical staff (BK=4) in treble clef, 2/4 time signature. This staff is dominated by triplets and slurs, continuing the complex rhythmic patterns from the previous staff.

BK=5

Fifth musical staff (BK=5) in treble clef, 2/4 time signature. The melody continues with various rhythmic values and slurs.

BK=6

Sixth musical staff (BK=6) in treble clef, 2/4 time signature. The melody continues with various rhythmic values and slurs.

BK=7

Seventh musical staff (BK=7) in treble clef, 2/4 time signature. It begins with a piano (*p*) dynamic marking. The melody features slurs and various rhythmic values.

BK=8

Eighth musical staff (BK=8) in treble clef, 2/4 time signature. The melody continues with slurs and various rhythmic values.

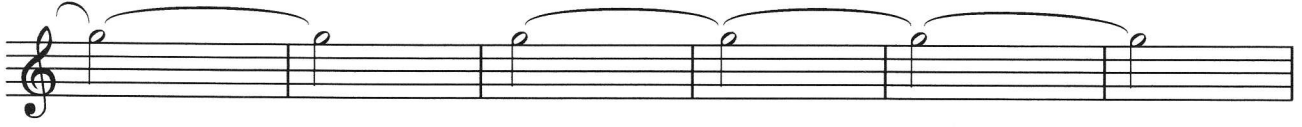
BK=9

Ninth musical staff (BK=9) in treble clef, 2/4 time signature. It features trills (*tr*) and a forte (*f*) dynamic marking. The melody continues with slurs and various rhythmic values.

BK=10

Tenth musical staff (BK=10) in treble clef, 2/4 time signature. The melody concludes with a quarter note G4, followed by eighth notes A4, B4, C5, and a dotted quarter note B4, ending with a fermata.

BK=11



BK=12



BK=13



BK=14



3.Molto Allegro

BK=1

First musical staff (BK=1) in treble clef, 2/4 time signature. It begins with a forte (*f*) dynamic marking. The melody consists of eighth and sixteenth notes with various accidentals, including a sharp sign.

BK=2

Second musical staff (BK=2) in treble clef, 2/4 time signature. It continues the melodic line from the first staff.

BK=3

Third musical staff (BK=3) in treble clef, 2/4 time signature. It features a more sparse melodic line with some rests and a sharp sign.

BK=4

Fourth musical staff (BK=4) in treble clef, 2/4 time signature. It contains several chords with a piano (*p*) dynamic marking.

BK=5

Fifth musical staff (BK=5) in treble clef, 2/4 time signature. It continues the melodic line with various accidentals.

BK=6

Sixth musical staff (BK=6) in treble clef, 2/4 time signature. It continues the melodic line with various accidentals.

BK=7

Seventh musical staff (BK=7) in treble clef, 2/4 time signature. It features a melodic line with a piano (*p*) dynamic marking.

BK=8

Eighth musical staff (BK=8) in treble clef, 2/4 time signature. It continues the melodic line with various accidentals.

BK=9

Ninth musical staff (BK=9) in treble clef, 2/4 time signature. It includes a trill (*tr*) and a forte (*f*) dynamic marking.

BK=10

Tenth musical staff (BK=10) in treble clef, 2/4 time signature. It concludes the piece with a melodic line and a forte (*f*) dynamic marking.

BK=11



BK=12



BK=13



BK=14



T

3. Molto Allegro

BK=1

Musical staff BK=1, Treble clef, 2/4 time signature. The staff contains a sequence of notes starting with a quarter rest, followed by eighth notes, and a dynamic marking *f* (forte) under the first eighth-note pair.

BK=2

Musical staff BK=2, Treble clef, 2/4 time signature. The staff contains a sequence of notes starting with a quarter rest, followed by eighth notes, and a dynamic marking *f* (forte) under the first eighth-note pair.

BK=3

Musical staff BK=3, Treble clef, 2/4 time signature. The staff contains a sequence of notes starting with a quarter rest, followed by eighth notes, and a dynamic marking *f* (forte) under the first eighth-note pair.

BK=4

Musical staff BK=4, Treble clef, 2/4 time signature. The staff contains a sequence of notes starting with a quarter rest, followed by eighth notes, and a dynamic marking *f* (forte) under the first eighth-note pair.

BK=5

Musical staff BK=5, Treble clef, 2/4 time signature. The staff contains a sequence of notes starting with a quarter rest, followed by eighth notes, and a dynamic marking *f* (forte) under the first eighth-note pair.

BK=6

Musical staff BK=6, Treble clef, 2/4 time signature. The staff contains a sequence of notes starting with a quarter rest, followed by eighth notes, and a dynamic marking *f* (forte) under the first eighth-note pair.

BK=7

Musical staff BK=7, Treble clef, 2/4 time signature. The staff contains a sequence of notes starting with a quarter rest, followed by eighth notes, and a dynamic marking *p* (piano) under the first eighth-note pair.

BK=8

Musical staff BK=8, Treble clef, 2/4 time signature. The staff contains a sequence of notes starting with a quarter rest, followed by eighth notes, and a dynamic marking *p* (piano) under the first eighth-note pair.

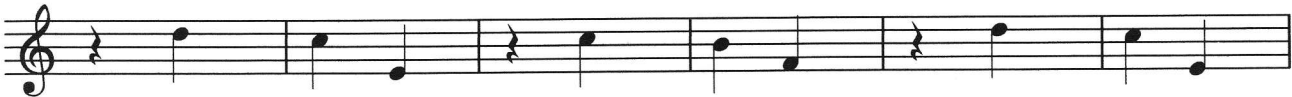
BK=9

Musical staff BK=9, Treble clef, 2/4 time signature. The staff contains a sequence of notes starting with a quarter rest, followed by eighth notes, and a dynamic marking *f* (forte) under the first eighth-note pair.

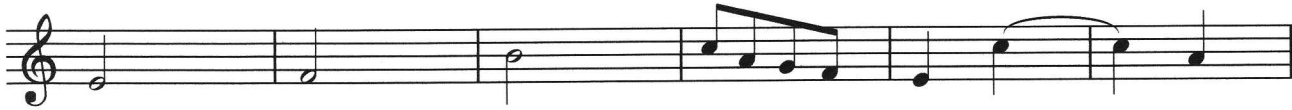
BK=10

Musical staff BK=10, Treble clef, 2/4 time signature. The staff contains a sequence of notes starting with a quarter rest, followed by eighth notes, and a dynamic marking *f* (forte) under the first eighth-note pair.

BK=11



BK=12



BK=13



BK=14



3.Molto Allegro

BK=1

Musical staff for BK=1, bass clef, 2/4 time signature. The staff begins with a fermata over the first measure, followed by a dynamic marking *f*. The notation includes eighth and sixteenth notes, some beamed together, and rests.

BK=2

Musical staff for BK=2, bass clef. The notation continues with eighth and sixteenth notes, some beamed together, and rests.

BK=3

Musical staff for BK=3, bass clef. The notation includes eighth notes, quarter notes, and rests.

BK=4

Musical staff for BK=4, bass clef. The notation includes quarter notes, eighth notes, and rests.

BK=5

Musical staff for BK=5, bass clef. The notation includes eighth and sixteenth notes, some beamed together, and rests.

BK=6

Musical staff for BK=6, bass clef. The notation includes eighth and sixteenth notes, some beamed together, and rests.

BK=7

Musical staff for BK=7, bass clef. The notation includes eighth notes, quarter notes, and rests. A dynamic marking *p* is present below the staff.

BK=8

Musical staff for BK=8, bass clef. The notation includes quarter notes, eighth notes, and rests.

BK=9

Musical staff for BK=9, bass clef. The notation includes quarter notes, eighth notes, and rests. A dynamic marking *f* is present below the staff.

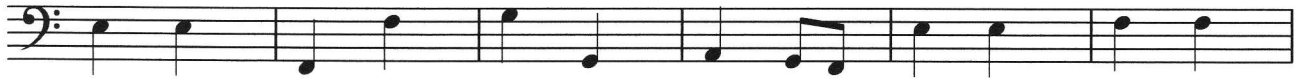
BK=10

Musical staff for BK=10, bass clef. The notation includes eighth and sixteenth notes, some beamed together, and rests.

BK=11



BK=12



BK=13



BK=14

