

2. Serenade

BK=1
Andante cantabile

Musical staff BK=1, starting with a treble clef, a key signature of one sharp (F#), and a common time signature (C). The staff contains a sequence of notes and rests, including a 'S' marking below the first measure.

BK=2

Musical staff BK=2, continuing the melody from the previous staff.

BK=3

Musical staff BK=3, continuing the melody.

BK=4

Musical staff BK=4, continuing the melody.

BK=5

Musical staff BK=5, continuing the melody.

BK=6

Musical staff BK=6, continuing the melody.

BK=7

Musical staff BK=7, continuing the melody.

BK=8

Musical staff BK=8, continuing the melody.

BK=9

Musical staff BK=9, continuing the melody and including a repeat sign (double bar line with two dots) in the second measure.

BK=10

Musical staff BK=10, continuing the melody.

BK=11



BK=12



BK=13



BK=14



BK=15



BK=16



BK=17



BK=18



BK=11



BK=12



BK=13



BK=14



BK=15



BK=16



BK=17



BK=18



T

2. Serenade

BK=1

Musical staff BK=1, starting with a treble clef, a key signature of one sharp (F#), and a common time signature (C). The staff contains a sequence of eighth notes, with the first measure being a whole rest. The word "simile" is written below the staff.

T
BK=2

Musical staff BK=2, continuing the sequence of eighth notes from the previous staff.

BK=3

Musical staff BK=3, continuing the sequence of eighth notes.

BK=4

Musical staff BK=4, continuing the sequence of eighth notes.

BK=5

Musical staff BK=5, continuing the sequence of eighth notes, with some notes marked with a flat (b).

BK=6

Musical staff BK=6, continuing the sequence of eighth notes.

BK=7

Musical staff BK=7, continuing the sequence of eighth notes.

BK=8

Musical staff BK=8, continuing the sequence of eighth notes.

BK=9

Musical staff BK=9, continuing the sequence of eighth notes, with a double bar line and repeat sign at the beginning of the staff.

BK=10

Musical staff BK=10, continuing the sequence of eighth notes.

BK=11



BK=12



BK=13



BK=14



BK=15



BK=16



BK=17



BK=18



B

2. Serenade

BK=1



BK=2



BK=3



BK=4



BK=5



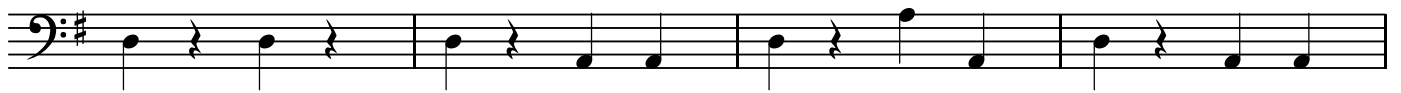
BK=6



BK=7



BK=8



BK=9



BK=10



BK=11



BK=12



BK=13



BK=14



BK=15



BK=16



BK=17



BK=18

