

QUARTET No. 17 (SERENADE)  
1. Presto

J.Haydn

BK=1

First musical staff (BK=1) in treble clef with a 3/8 time signature. It begins with a piano (*p*) dynamic and a fermata over the first two notes. The staff concludes with a forte (*f*) dynamic.

BK=2

Second musical staff (BK=2) in treble clef. It begins with a piano (*p*) dynamic and contains several rests.

BK=3

Third musical staff (BK=3) in treble clef, mostly consisting of rests, ending with a forte (*f*) dynamic.

BK=4

Fourth musical staff (BK=4) in treble clef, featuring a continuous sixteenth-note pattern that concludes with a piano (*p*) dynamic.

BK=5

Fifth musical staff (BK=5) in treble clef, featuring a melodic line with slurs and a final sixteenth-note flourish.

BK=6

Sixth musical staff (BK=6) in treble clef, featuring a melodic line with slurs. It begins with a forte (*f*) dynamic and ends with a piano (*p*) *dolce* dynamic.

BK=7

Seventh musical staff (BK=7) in treble clef, featuring a melodic line with slurs and a final note with a fermata.

BK=8

Eighth musical staff (BK=8) in treble clef, featuring a melodic line with slurs and a forte (*f*) dynamic.

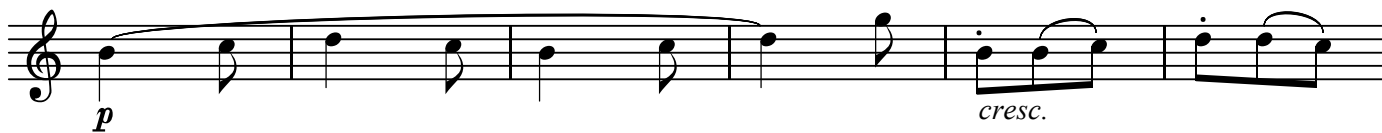
BK=9

Ninth musical staff (BK=9) in treble clef, featuring a melodic line with slurs and a final sixteenth-note flourish.

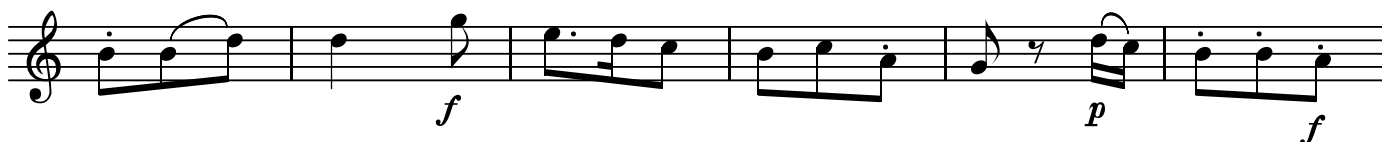
BK=10



BK=11



BK=12



BK=13



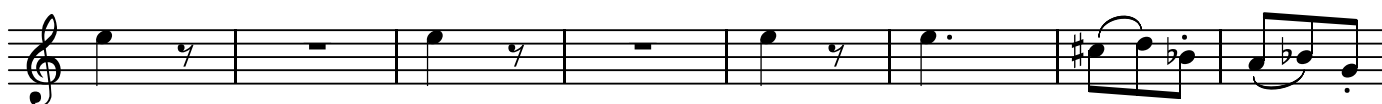
BK=14



BK=15



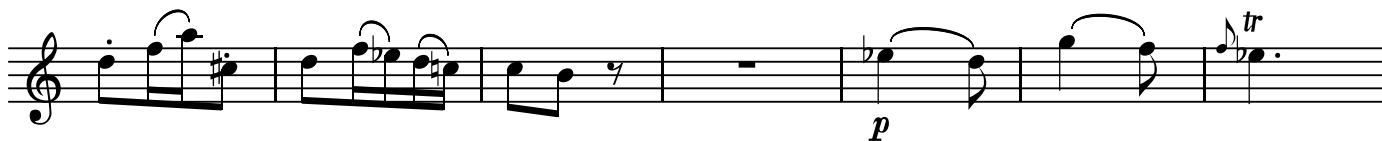
BK=16



BK=17



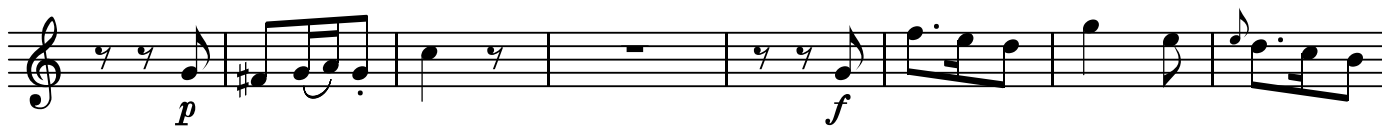
BK=18



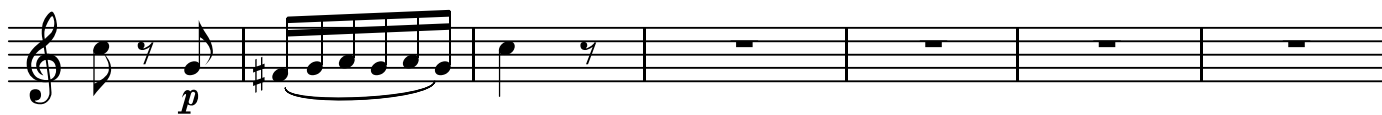
BK=19



BK=20



BK=21



BK=22



BK=23



BK=24



BK=25



BK=26



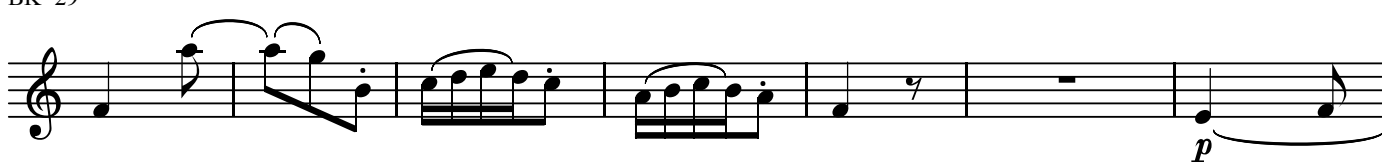
BK=27



BK=28



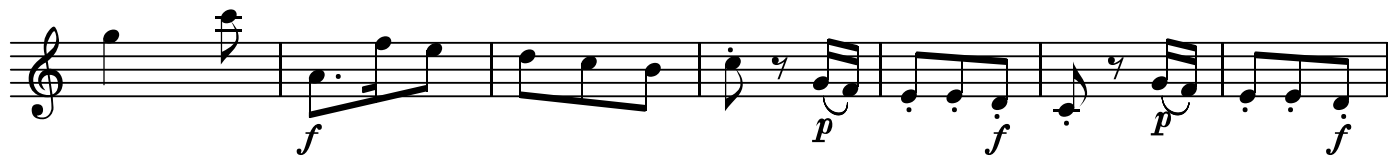
BK=29



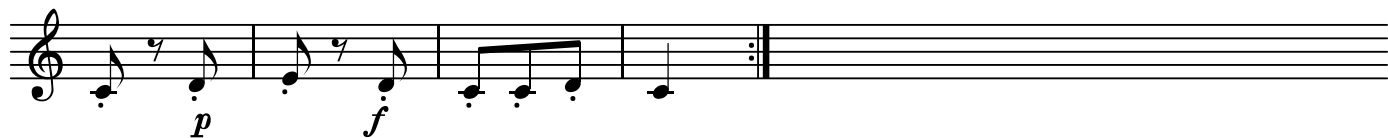
BK=30



BK=31



BK=32



QUARTET No. 17 (SERENADE)  
1. Presto

J.Haydn

BK=1

Musical staff for BK=1, starting with a treble clef and a 3/8 time signature. The staff contains a sequence of notes and rests. A dynamic marking of *f* is placed below the staff.

BK=2

Musical staff for BK=2, continuing the sequence of notes and rests. A dynamic marking of *f* is placed below the staff.

BK=3

Musical staff for BK=3, featuring a more complex melodic line with slurs and accents. Dynamic markings of *f* and *p* are present.

BK=4

Musical staff for BK=4, showing a melodic line with slurs and a dynamic marking of *p*.

BK=5

Musical staff for BK=5, consisting of a continuous eighth-note accompaniment pattern.

BK=6

Musical staff for BK=6, featuring a melodic line with slurs and a dynamic marking of *f*.

BK=7

Musical staff for BK=7, which is a completely blank staff.

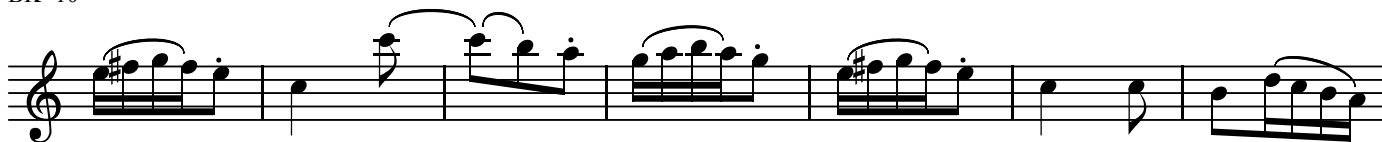
BK=8

Musical staff for BK=8, which is mostly blank with a few notes at the end and a dynamic marking of *f*.

BK=9

Musical staff for BK=9, featuring a melodic line with slurs and a dynamic marking of *f*.

BK=10



BK=11



BK=12



BK=13



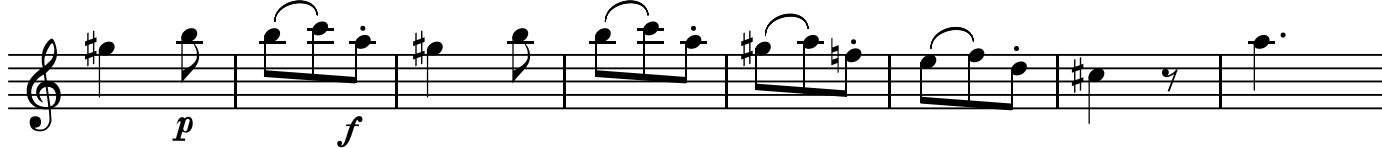
BK=14



BK=15



BK=16



BK=17



BK=18



BK=19



BK=20

Musical staff BK=20, starting with a rest followed by a series of notes including a dynamic marking *f*.

BK=21

Musical staff BK=21, starting with a rest followed by a series of notes including a dynamic marking *f*.

BK=22

Musical staff BK=22, featuring a series of notes with slurs and accents.

BK=23

Musical staff BK=23, featuring a series of notes with slurs and accents.

BK=24

Musical staff BK=24, featuring a series of notes with slurs and accents, including dynamic markings *p* and *f*.

BK=25

Musical staff BK=25, featuring a series of notes with slurs and accents, including a dynamic marking *p*.

BK=26

Musical staff BK=26, featuring a series of notes with slurs and accents.

BK=27

Musical staff BK=27, featuring a series of notes with slurs and accents, including a dynamic marking *f*.

BK=28

Musical staff BK=28, featuring a series of notes with slurs and accents.

BK=29

Musical staff BK=29, featuring a series of notes with slurs and accents, including a dynamic marking *p*.

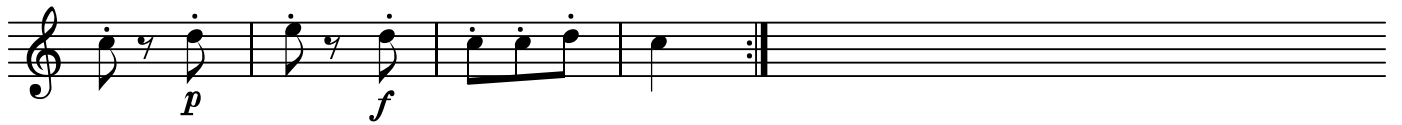
BK=30



BK=31



BK=32





T

# QUARTET No. 17 (SERENADE)

1. Presto

J.Haydn

BK=1

Musical staff for BK=1, starting with a treble clef and a 3/8 time signature. The staff contains a series of notes and rests, with a dynamic marking of *f* (forte) under the first measure.

BK=2

Musical staff for BK=2, continuing the melody with a dynamic marking of *f* (forte) under the first measure.

BK=3

Musical staff for BK=3, featuring dynamic markings of *f* (forte) and *p* (piano) throughout the staff.

BK=4

Musical staff for BK=4, featuring a dynamic marking of *p* (piano) under the first measure.

BK=5

Musical staff for BK=5, continuing the melodic line.

BK=6

Musical staff for BK=6, featuring dynamic markings of *f* (forte) and *p* (piano).

BK=7

Musical staff for BK=7, featuring a series of eighth notes and a dynamic marking of *f* (forte) at the end.

BK=8

Musical staff for BK=8, featuring a series of eighth notes and a dynamic marking of *f* (forte) at the end.

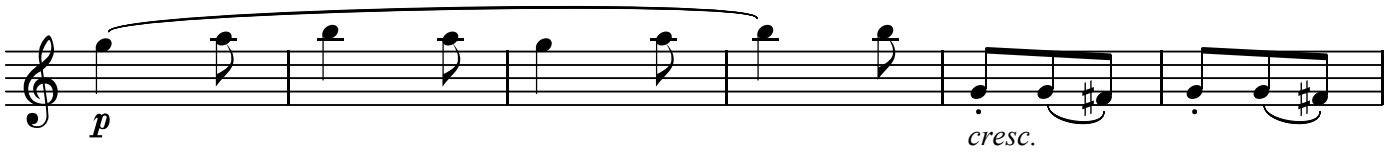
BK=9

Musical staff for BK=9, featuring a series of eighth notes and a dynamic marking of *f* (forte) at the end.

BK=10



BK=11



BK=12



BK=13



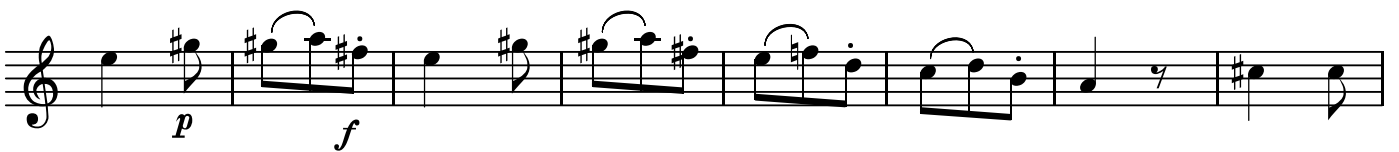
BK=14



BK=15



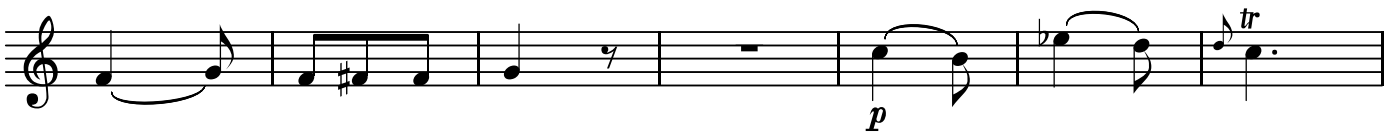
BK=16



BK=17



BK=18



BK=19





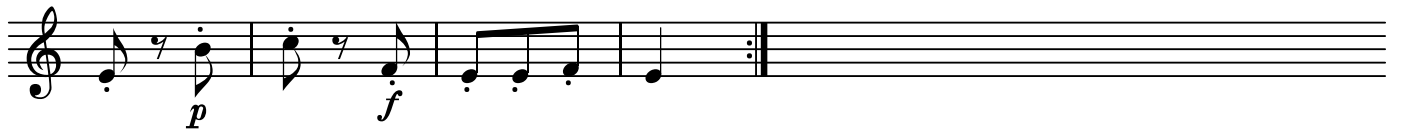
BK=30



BK=31



BK=32



QUARTET No. 17 (SERENADE)

1. Presto

J.Haydn

BK=1

First musical staff (BK=1) in bass clef, 3/8 time signature. It begins with a whole rest, followed by a quarter rest, then a quarter note G2, a quarter note A2, a quarter note B2, a quarter note C3, a quarter note D3, a quarter note E3, a quarter note F3, and a quarter note G3. A dynamic marking *f* is placed below the first quarter note. A *B* is written below the first measure.

BK=2

Second musical staff (BK=2) in bass clef, 3/8 time signature. It begins with a quarter note G2, a quarter note A2, a quarter note B2, a quarter note C3, a quarter note D3, a quarter note E3, a quarter note F3, and a quarter note G3. A dynamic marking *f* is placed below the first quarter note.

BK=3

Third musical staff (BK=3) in bass clef, 3/8 time signature. It begins with a quarter note G2, a quarter note A2, a quarter note B2, a quarter note C3, a quarter note D3, a quarter note E3, a quarter note F3, and a quarter note G3. Dynamic markings *f*, *p*, and *f* are placed below the first, third, and seventh quarter notes respectively.

BK=4

Fourth musical staff (BK=4) in bass clef, 3/8 time signature. It begins with a quarter note G2, a quarter note A2, a quarter note B2, a quarter note C3, a quarter note D3, a quarter note E3, a quarter note F3, and a quarter note G3. A dynamic marking *p* is placed below the fifth quarter note.

BK=5

Fifth musical staff (BK=5) in bass clef, 3/8 time signature. It begins with a quarter note G2, a quarter note A2, a quarter note B2, a quarter note C3, a quarter note D3, a quarter note E3, a quarter note F3, and a quarter note G3. The staff contains various melodic lines with slurs and accidentals.

BK=6

Sixth musical staff (BK=6) in bass clef, 3/8 time signature. It begins with a quarter note G2, a quarter note A2, a quarter note B2, a quarter note C3, a quarter note D3, a quarter note E3, a quarter note F3, and a quarter note G3. A dynamic marking *f* is placed below the first quarter note.

BK=7

Seventh musical staff (BK=7) in bass clef, 3/8 time signature. It begins with a whole rest, followed by a quarter rest, then a quarter note G2, a quarter note A2, a quarter note B2, a quarter note C3, a quarter note D3, a quarter note E3, a quarter note F3, and a quarter note G3.

BK=8

Eighth musical staff (BK=8) in bass clef, 3/8 time signature. It begins with a quarter note G2, a quarter note A2, a quarter note B2, a quarter note C3, a quarter note D3, a quarter note E3, a quarter note F3, and a quarter note G3. A dynamic marking *f* is placed below the eighth quarter note.

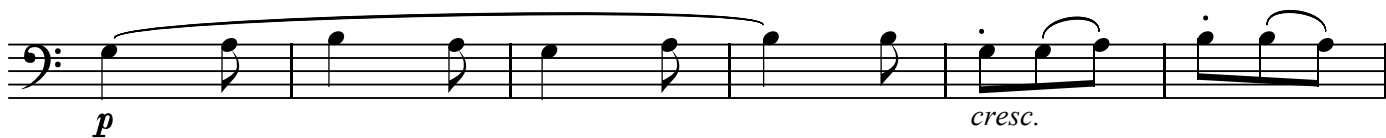
BK=9

Ninth musical staff (BK=9) in bass clef, 3/8 time signature. It begins with a quarter note G2, a quarter note A2, a quarter note B2, a quarter note C3, a quarter note D3, a quarter note E3, a quarter note F3, and a quarter note G3. The staff contains various melodic lines with slurs and accidentals.

BK=10



BK=11



BK=12



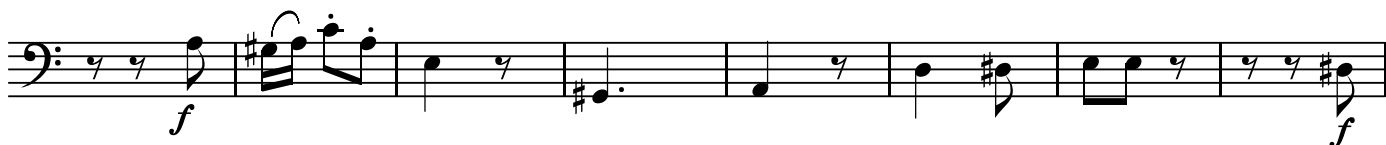
BK=13



BK=14



BK=15



BK=16



BK=17



BK=18



BK=19



BK=20



BK=21



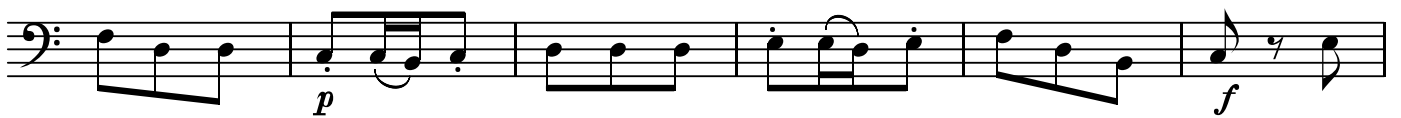
BK=22



BK=23



BK=24



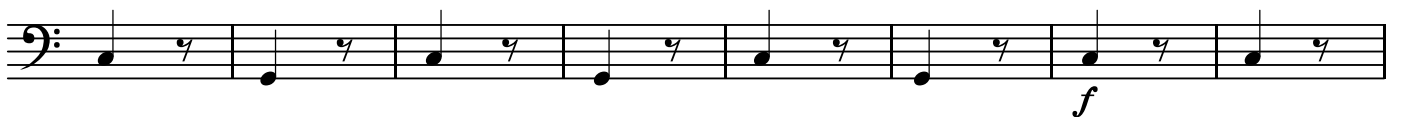
BK=25



BK=26



BK=27



BK=28



BK=29



BK=30



BK=31



BK=32

