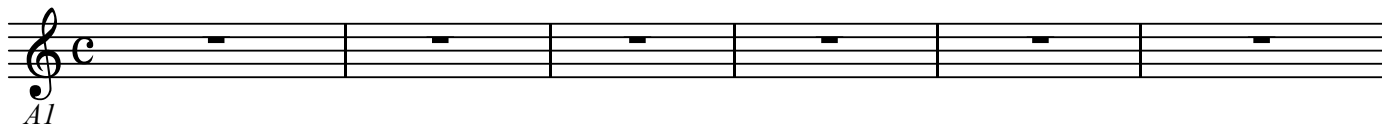


A1

60. アーメン

BK=1

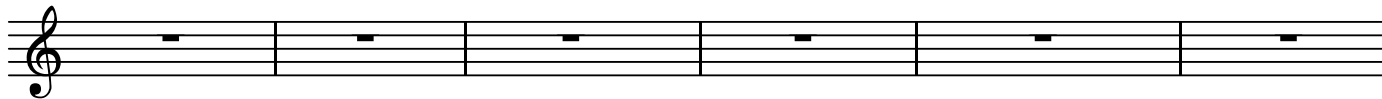


*A1*

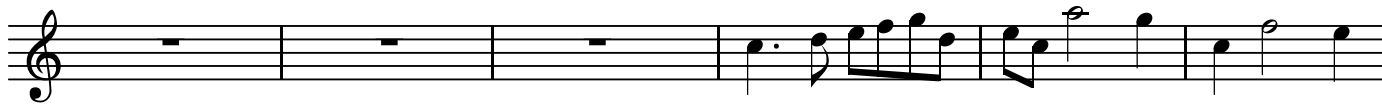
BK=2



BK=3



BK=4



BK=5



BK=6



BK=7



BK=8



BK=9



BK=10



BK=11



BK=12



BK=13



BK=14



BK=15

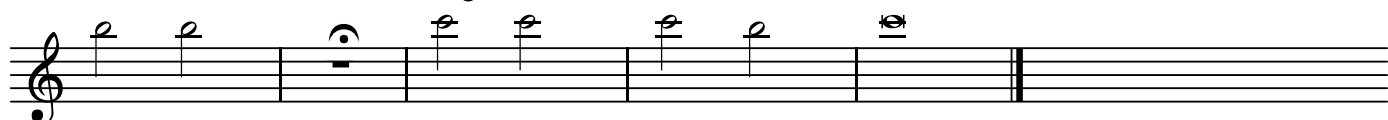


BK=16



BK=17

Adagio



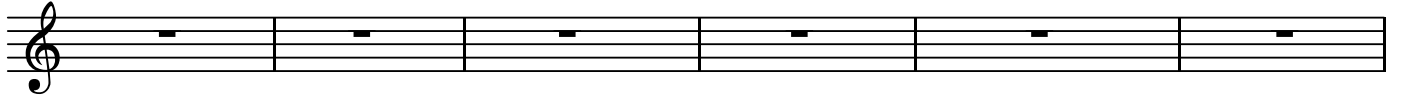
BK=1



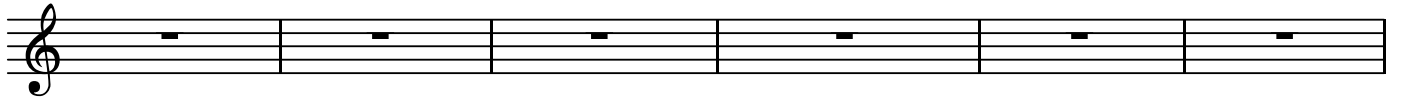
BK=2



BK=3



BK=4



BK=5



BK=6



BK=7



BK=8



BK=9



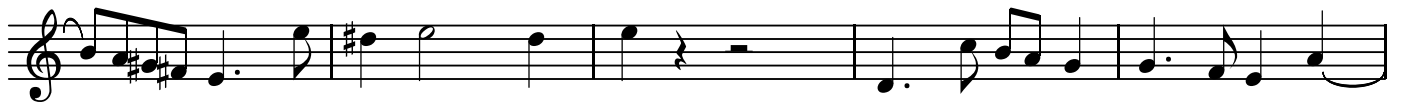
BK=10



BK=11



BK=12



BK=13



BK=14



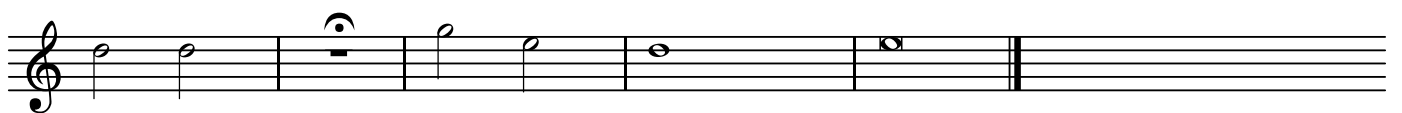
BK=15



BK=16



BK=17



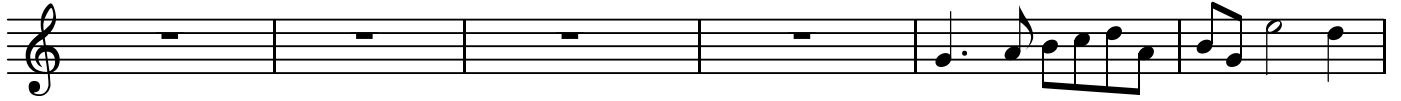
BK=1



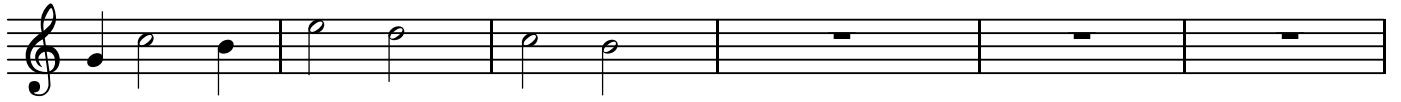
BK=2



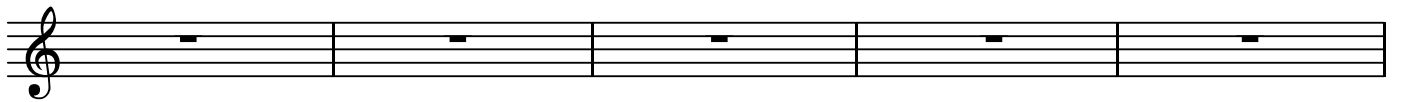
BK=3



BK=4



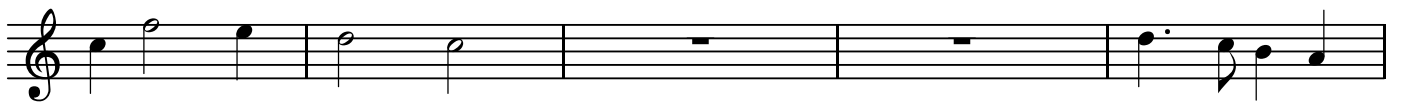
BK=5



BK=6



BK=7



BK=8



BK=9



BK=10



BK=11



BK=12



BK=13



BK=14



BK=15



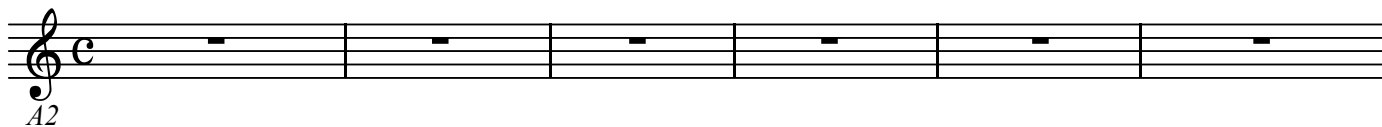
BK=16



BK=17

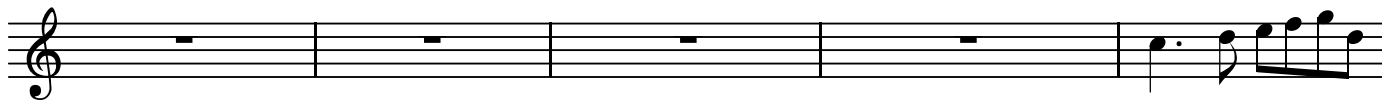


BK=1



A2

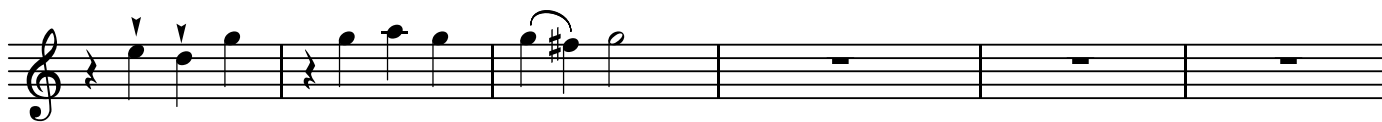
BK=2



BK=3



BK=4



BK=5



BK=6



BK=7



BK=8



BK=9



BK=10



BK=11



BK=12



BK=13



BK=14



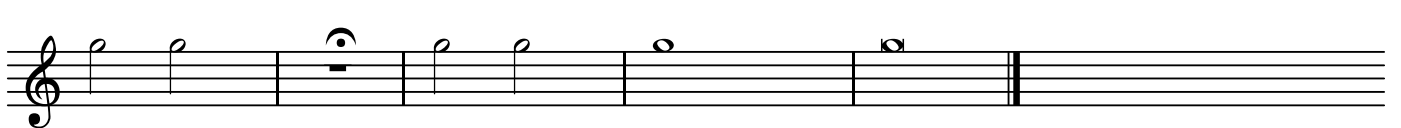
BK=15



BK=16

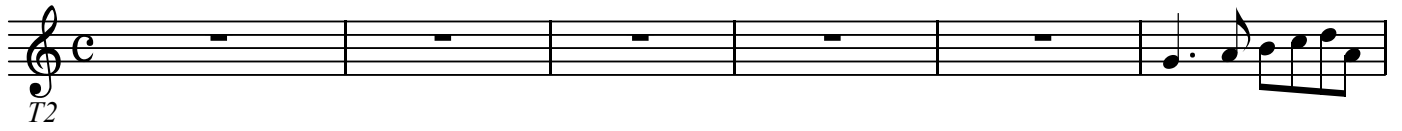


BK=17





BK=1



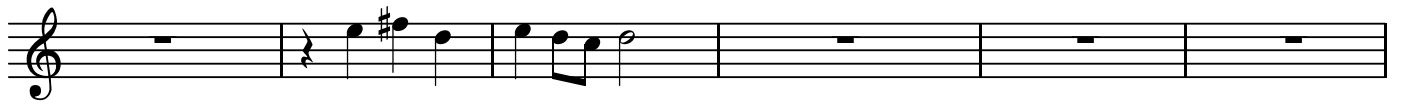
BK=2



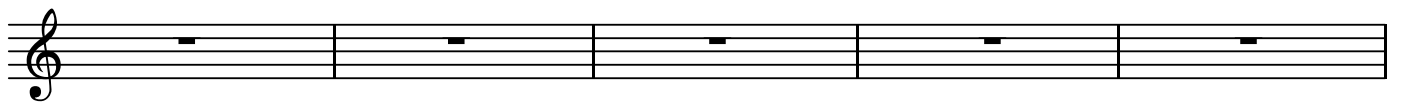
BK=3



BK=4



BK=5



BK=6



BK=7



BK=8



BK=9



BK=10



BK=11



BK=12



BK=13



BK=14



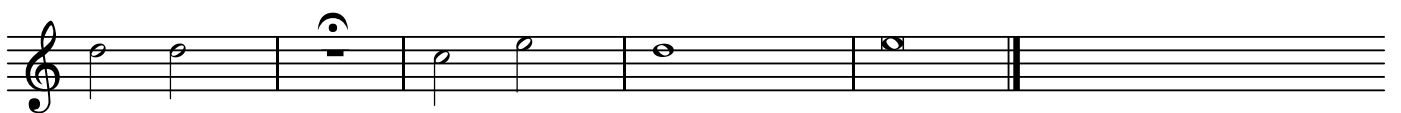
BK=15



BK=16



BK=17



BK=1

First musical staff in bass clef, common time signature. It begins with a dynamic marking 'B'. The melody consists of eighth and quarter notes, ending with a half note.

BK=2

Second musical staff in bass clef, common time signature. It features a series of eighth notes with accents, followed by quarter notes and a final half note.

BK=3

Third musical staff in bass clef, common time signature. It contains several measures of music, including quarter and eighth notes, with some rests.

BK=4

Fourth musical staff in bass clef, common time signature. It shows a few measures of music, primarily consisting of quarter notes and rests.

BK=5

Fifth musical staff in bass clef, common time signature. This staff contains only whole rests for all measures.

BK=6

Sixth musical staff in bass clef, common time signature. It begins with a whole rest, followed by a series of eighth and quarter notes.

BK=7

Seventh musical staff in bass clef, common time signature. It features a melodic line with eighth notes and a slur, followed by a whole rest and a final eighth note.

BK=8

Eighth musical staff in bass clef, common time signature. It contains a complex melodic line with eighth notes, slurs, and a sharp sign, ending with a half note.

BK=9

Ninth musical staff in bass clef, common time signature. It features a fast-moving melodic line with eighth notes and slurs.

BK=10

Tenth musical staff in bass clef, common time signature. It continues the fast-moving melodic line with eighth notes and slurs, ending with a half note.

BK=11



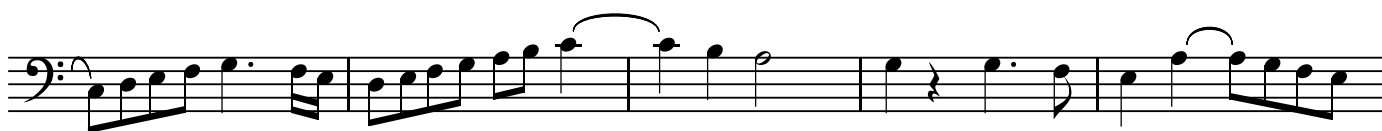
BK=12



BK=13



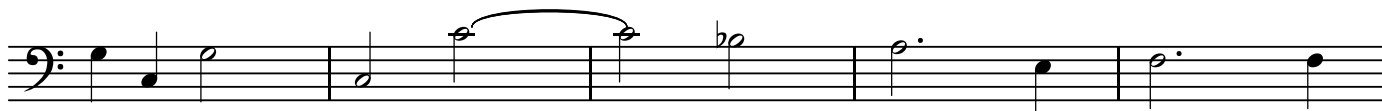
BK=14



BK=15



BK=16



BK=17

