

A1

13. 一人の嬰兒われらのために生まれたり

BK=1 Moderato



A1  
BK=2



BK=3



BK=4



BK=5



BK=6



BK=7



BK=8



BK=9



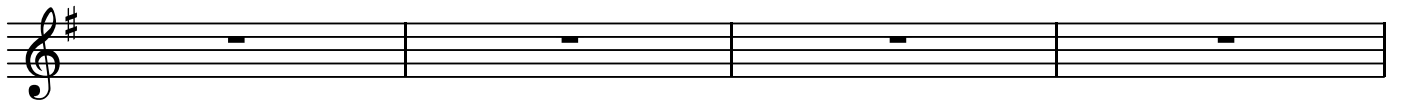
BK=10



BK=11



BK=12



BK=13



BK=14



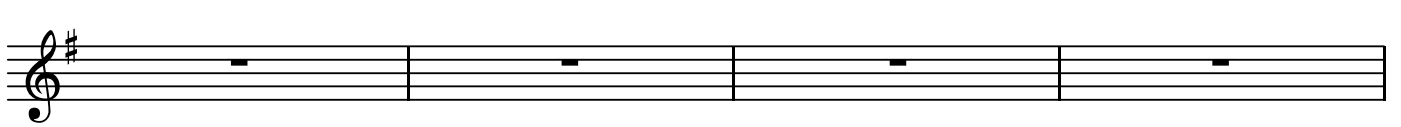
BK=15



BK=16



BK=17



BK=18



BK=19



BK=20



BK=21



BK=22



BK=23



BK=24



BK=25



BK=26



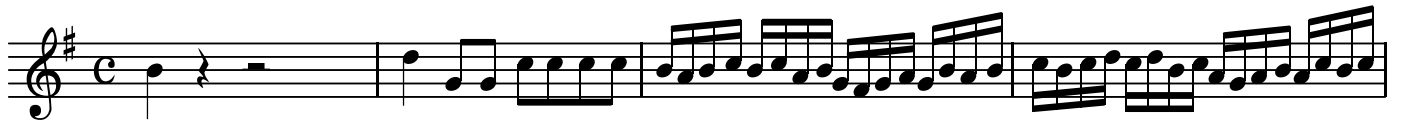
BK=27



T1

13. 一人の嬰兒われらのために生まれたり

BK=1



T1  
BK=2



BK=3



BK=4



BK=5



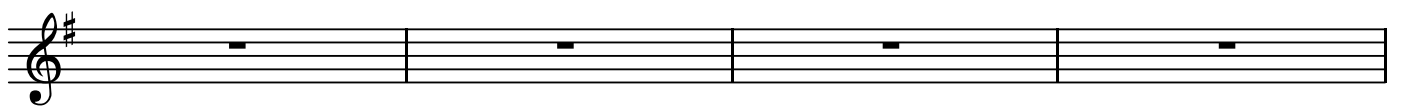
BK=6



BK=7



BK=8



BK=9



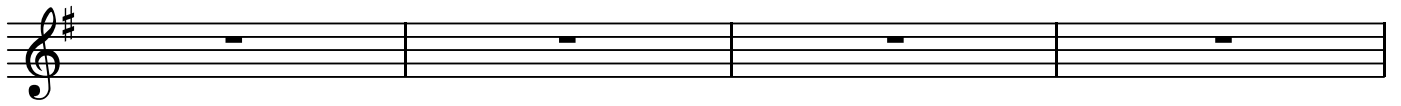
BK=10



BK=11



BK=12



BK=13



BK=14



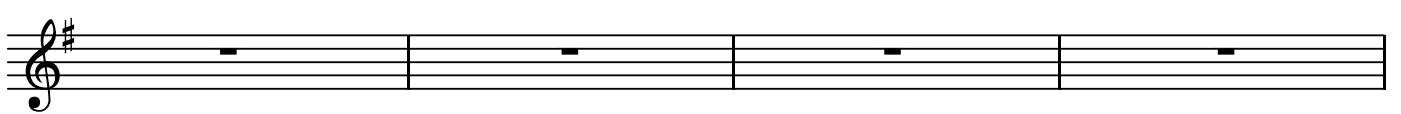
BK=15



BK=16



BK=17



BK=18



BK=19



BK=20



BK=21



BK=22



BK=23



BK=24



BK=25



BK=26

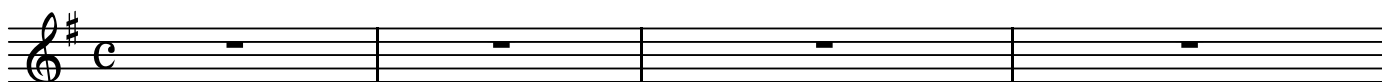


BK=27



13. 一人の嬰兒われらのために生まれたり

BK=1



S  
BK=2



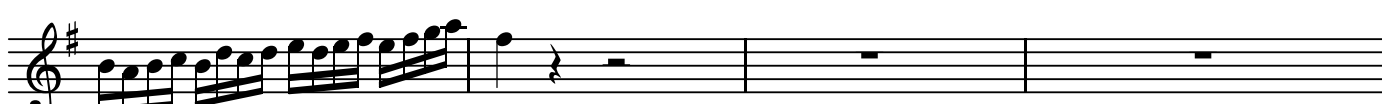
BK=3



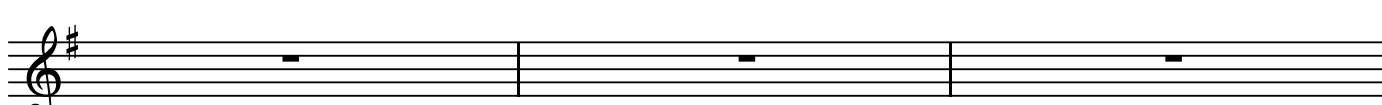
BK=4



BK=5



BK=6



BK=7



BK=8



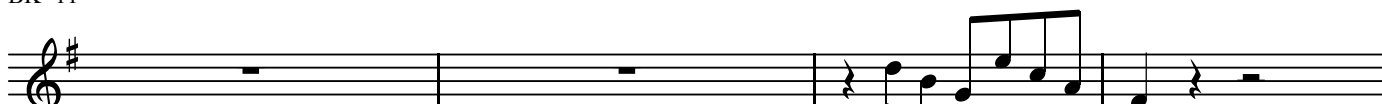
BK=9



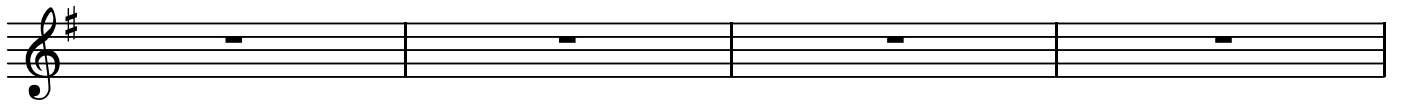
BK=10



BK=11



BK=12



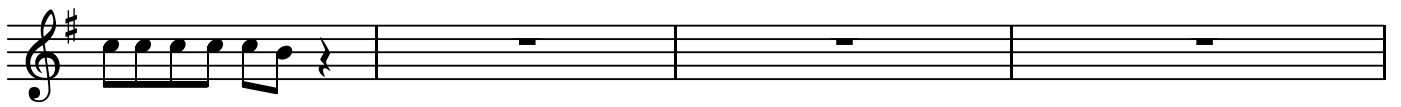
BK=13



BK=14



BK=15



BK=16



BK=17



BK=18



BK=19



BK=20



BK=21



BK=22





BK=23



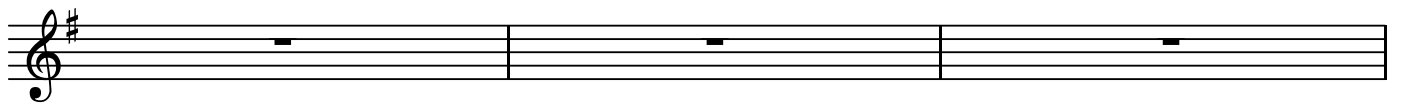
BK=24



BK=25



BK=26



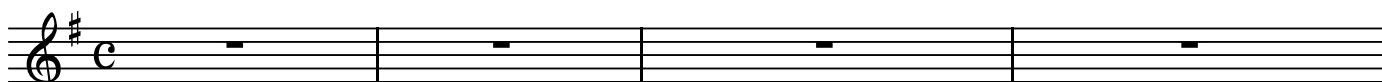
BK=27



A2

13. 一人の嬰兒われらのために生まれたり

BK=1



A2  
BK=2



BK=3



BK=4



BK=5



BK=6



BK=7



BK=8



BK=9



BK=10



BK=11



BK=12



BK=13



BK=14



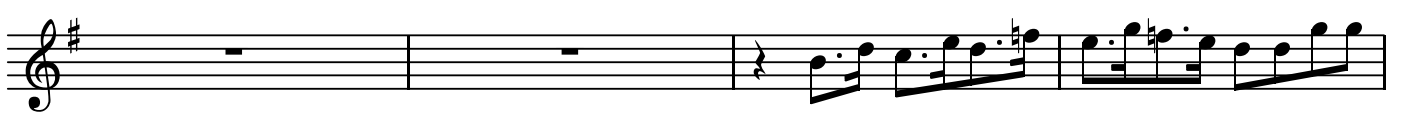
BK=15



BK=16



BK=17



BK=18



BK=19



BK=20



BK=21



BK=22



BK=23



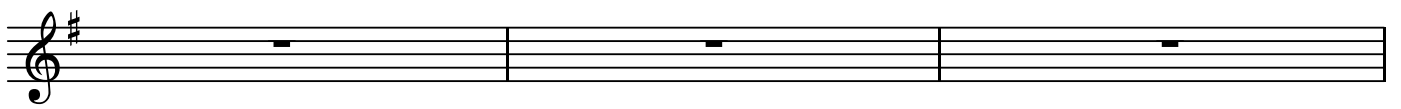
BK=24



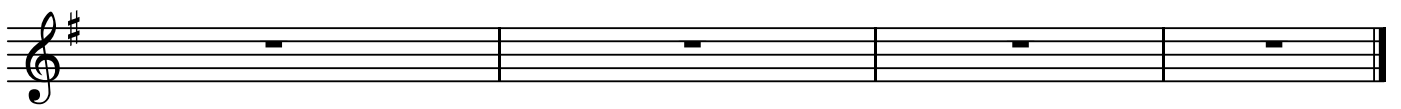
BK=25



BK=26

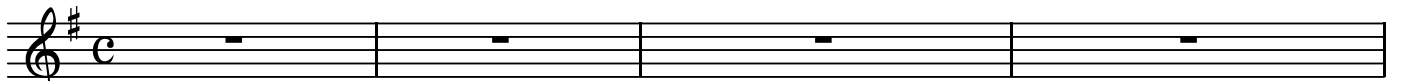


BK=27

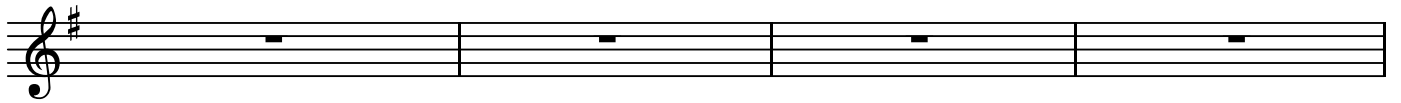


13. 一人の嬰兒われらのために生まれたり

BK=1



T2  
BK=2



BK=3



BK=4



BK=5



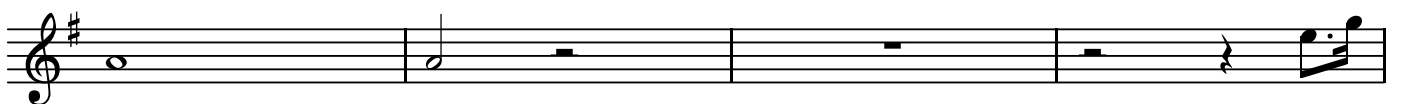
BK=6



BK=7



BK=8



BK=9



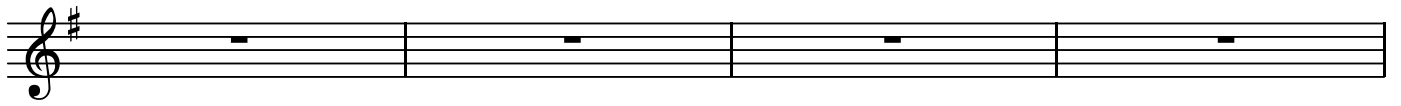
BK=10



BK=11



BK=12



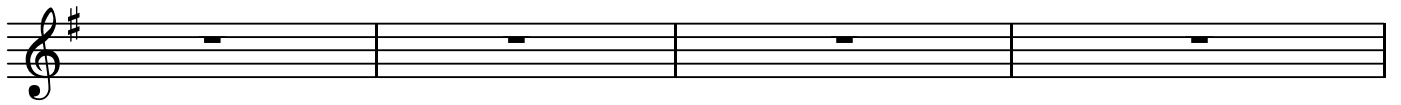
BK=13



BK=14



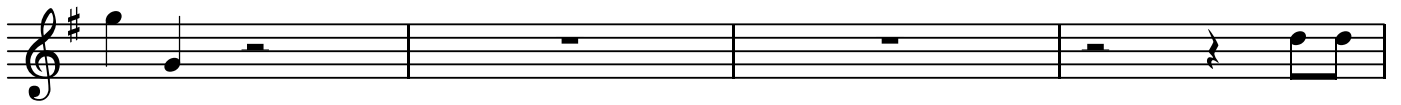
BK=15



BK=16



BK=17



BK=18



BK=19



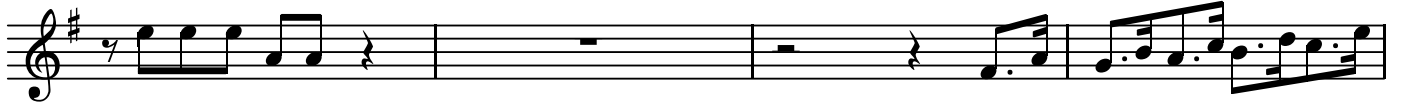
BK=20



BK=21



BK=22



BK=23



BK=24



BK=25



BK=26



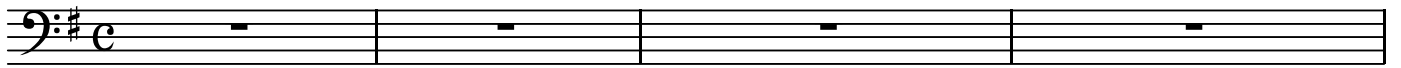
BK=27



B

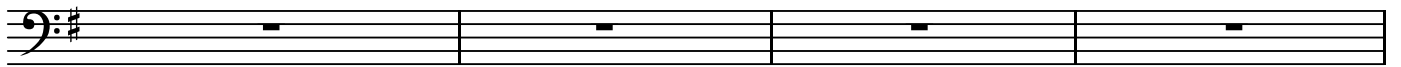
13. 一人の嬰兒われらのために生まれたり

BK=1



*B*

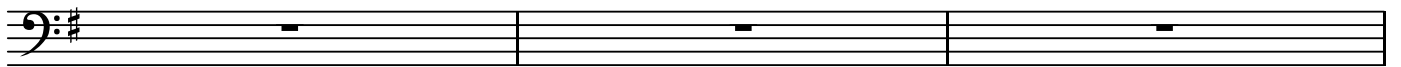
BK=2



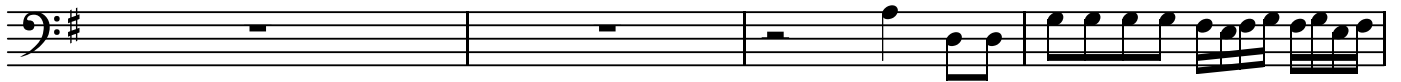
BK=3



BK=4



BK=5



BK=6



BK=7



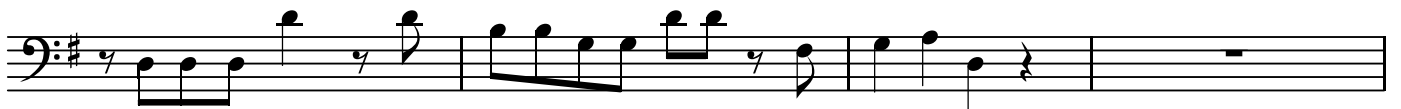
BK=8



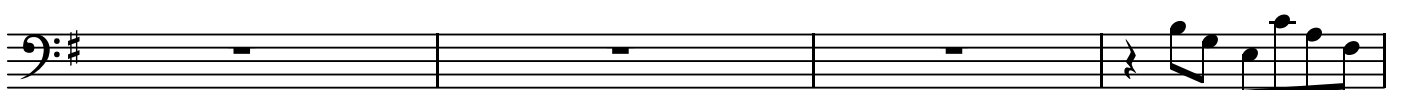
BK=9



BK=10



BK=11





BK=12



BK=13



BK=14



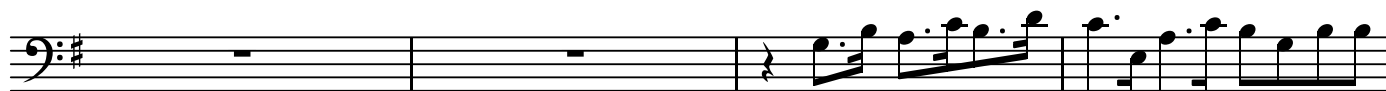
BK=15



BK=16



BK=17



BK=18



BK=19



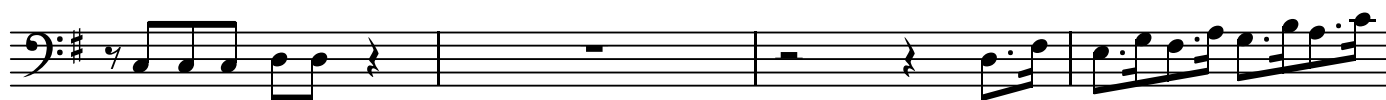
BK=20



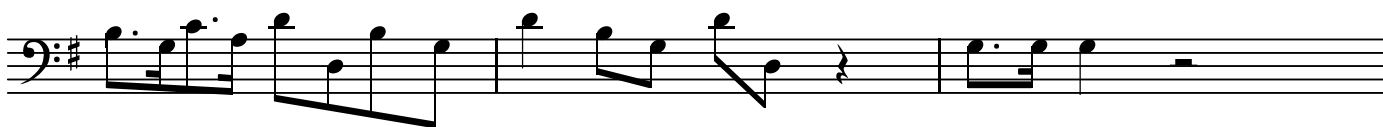
BK=21



BK=22



BK=23



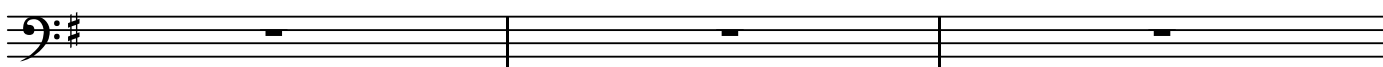
BK=24



BK=25



BK=26



BK=27



GB

13. 一人の嬰兒われらのために生まれたり

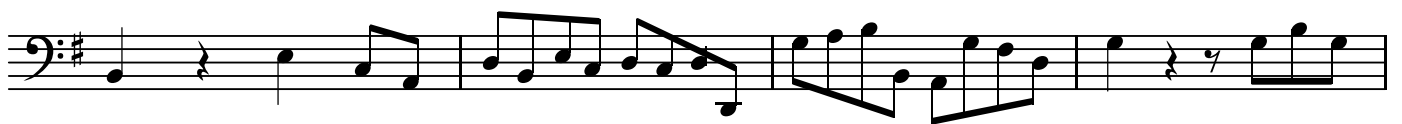
BK=1



Musical staff for BK=1, featuring a bass clef, a key signature of one sharp (F#), and a common time signature (C). The staff contains a sequence of eighth and sixteenth notes, with some rests.

GB

BK=2



Musical staff for BK=2, continuing the bass clef, one sharp key signature, and common time signature. It features a mix of eighth and sixteenth notes with rests.

BK=3



Musical staff for BK=3, continuing the bass clef, one sharp key signature, and common time signature. It features a mix of eighth and sixteenth notes with rests.

BK=4



Musical staff for BK=4, continuing the bass clef, one sharp key signature, and common time signature. It features a mix of eighth and sixteenth notes with rests.

BK=5



Musical staff for BK=5, continuing the bass clef, one sharp key signature, and common time signature. It features a mix of eighth and sixteenth notes with rests.

BK=6



Musical staff for BK=6, continuing the bass clef, one sharp key signature, and common time signature. It features a mix of eighth and sixteenth notes with rests.

BK=7



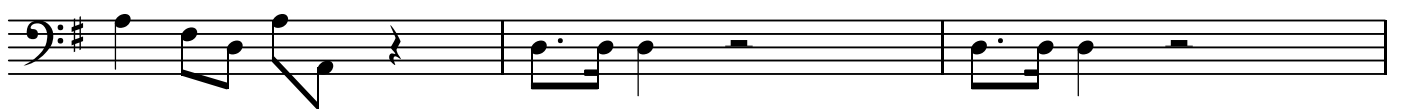
Musical staff for BK=7, continuing the bass clef, one sharp key signature, and common time signature. It features a mix of eighth and sixteenth notes with rests.

BK=8



Musical staff for BK=8, continuing the bass clef, one sharp key signature, and common time signature. It features a mix of eighth and sixteenth notes with rests.

BK=9



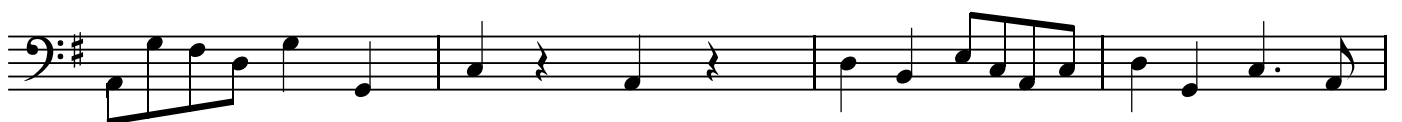
Musical staff for BK=9, continuing the bass clef, one sharp key signature, and common time signature. It features a mix of eighth and sixteenth notes with rests.

BK=10



Musical staff for BK=10, continuing the bass clef, one sharp key signature, and common time signature. It features a mix of eighth and sixteenth notes with rests.

BK=11

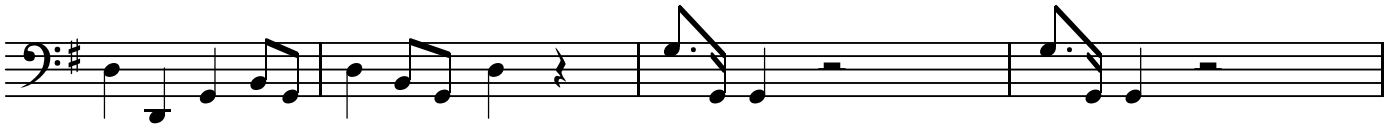


Musical staff for BK=11, continuing the bass clef, one sharp key signature, and common time signature. It features a mix of eighth and sixteenth notes with rests.

BK=12



BK=13



BK=14



BK=15



BK=16



BK=17



BK=18



BK=19



BK=20



BK=21



BK=22



BK=23



BK=24



BK=25



BK=26



BK=27

