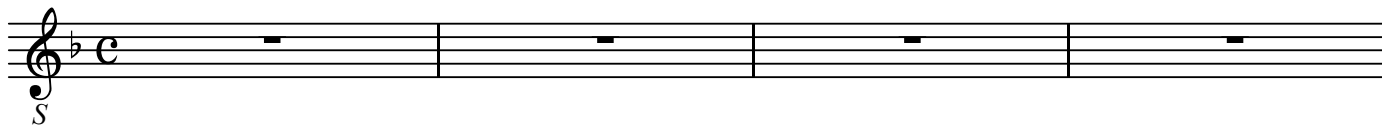


「メサイア」より  
3. Arie

G.F.Handel

BK=1

Andante



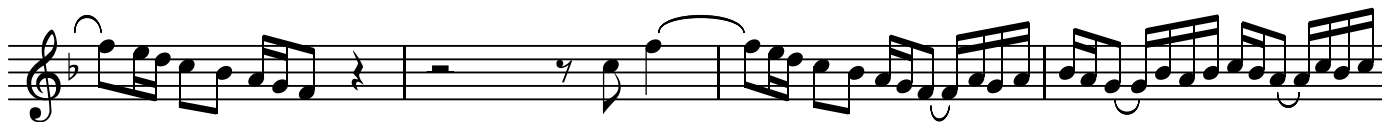
BK=2



BK=3



BK=4



BK=5



BK=6



BK=7



BK=8



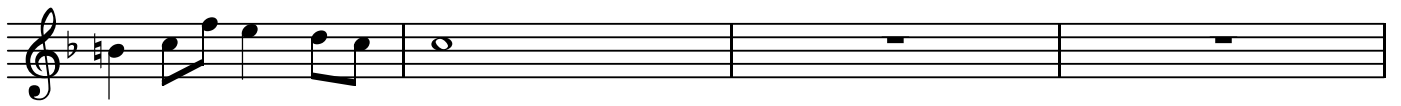
BK=9



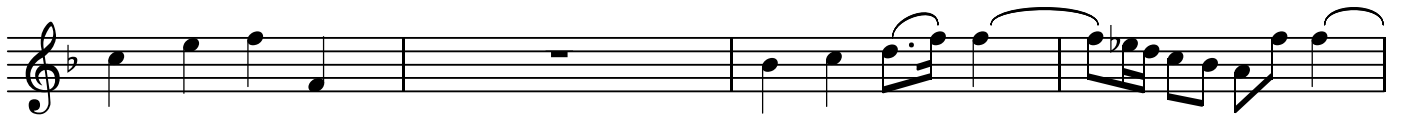
BK=10



BK=11



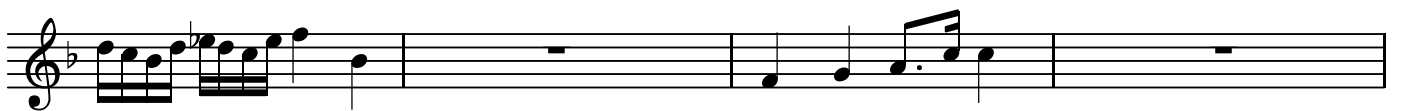
BK=12



BK=13



BK=14



BK=15



BK=16



BK=17



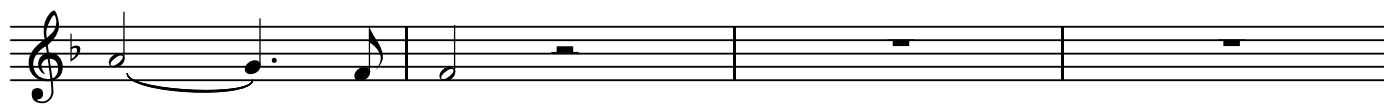
BK=18



BK=19



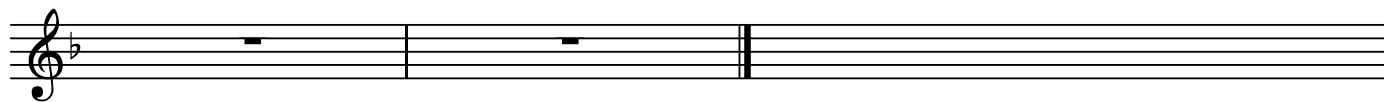
BK=20



BK=21



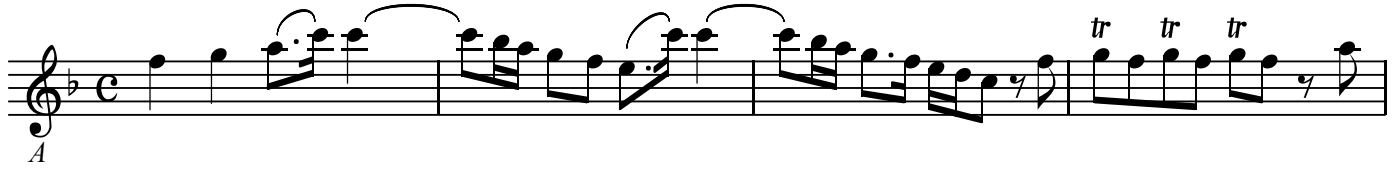
BK=22



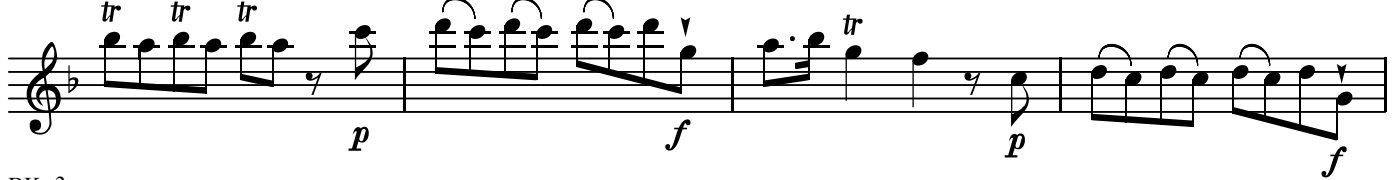
「メサイア」より  
3. Arie

G.F.Handel

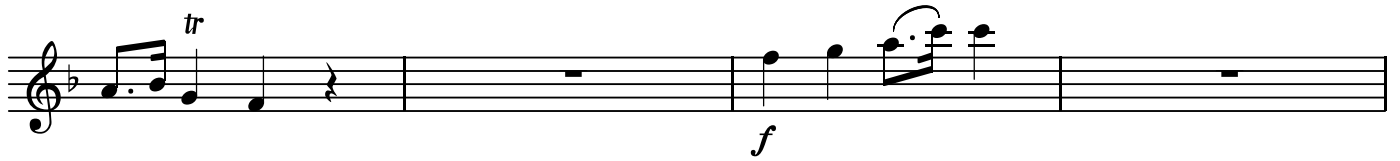
BK=1



BK=2



BK=3



BK=4



BK=5



BK=6



BK=7



BK=8



BK=9



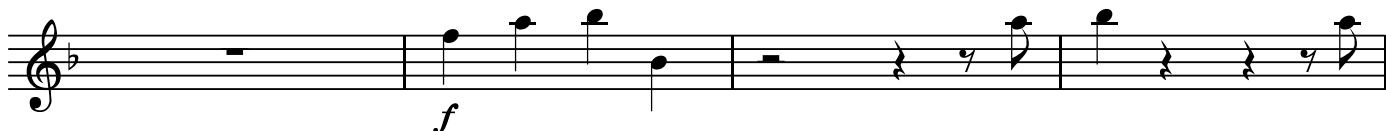
BK=10



BK=11



BK=12



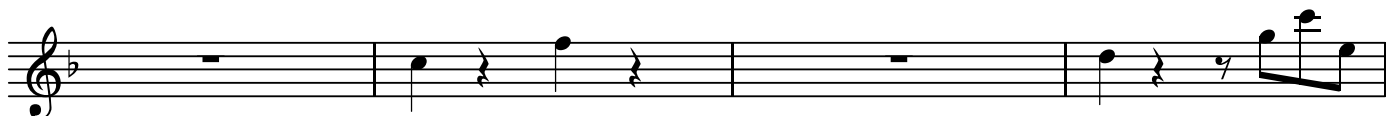
BK=13



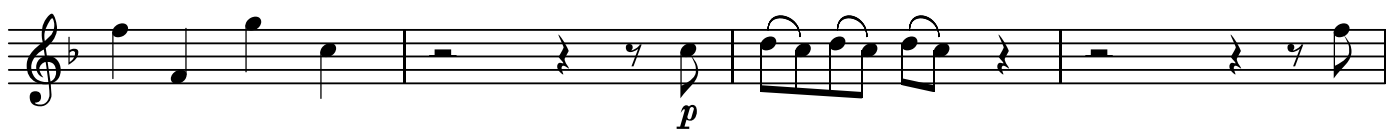
BK=14



BK=15



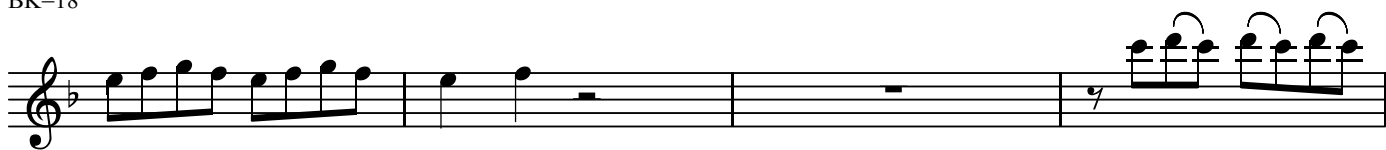
BK=16



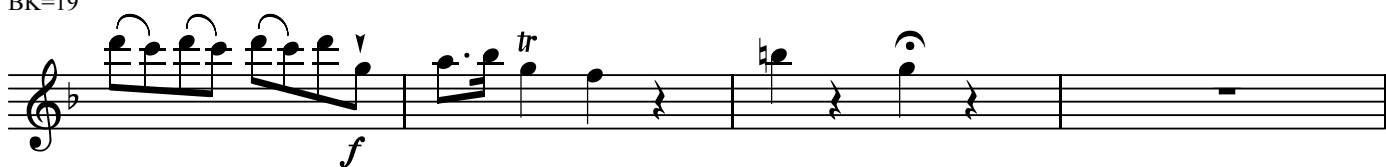
BK=17



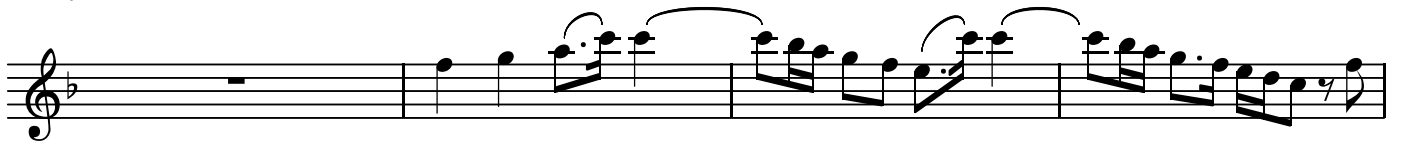
BK=18



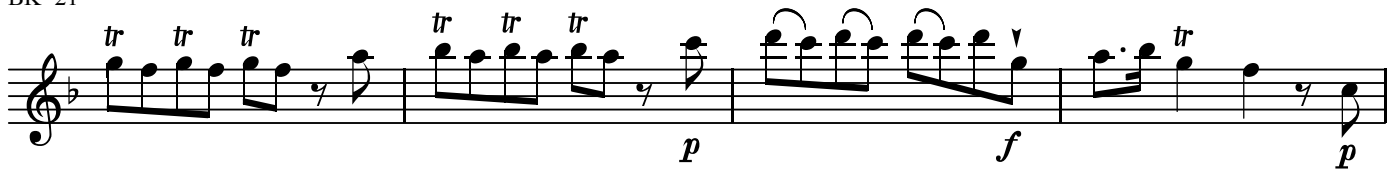
BK=19



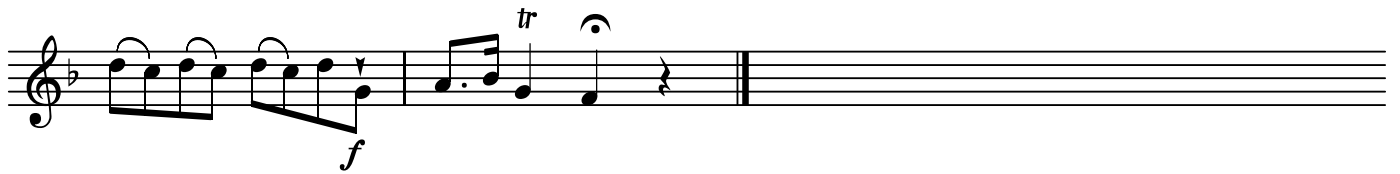
BK=20



BK=21



BK=22



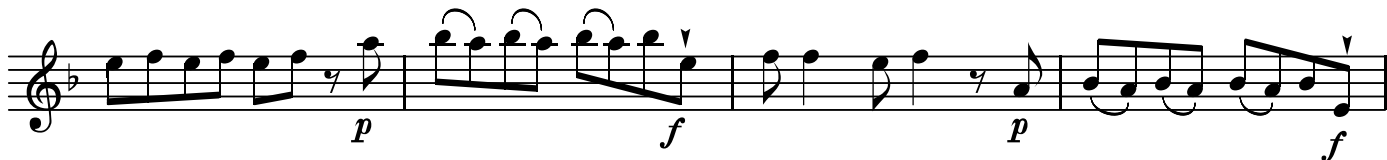
「メサイア」より  
3. Arie

G.F.Handel

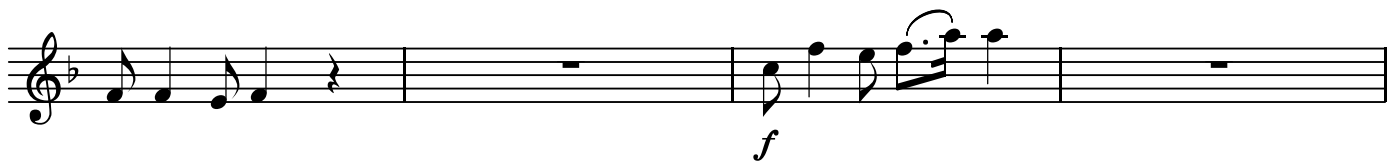
BK=1



BK=2



BK=3



BK=4



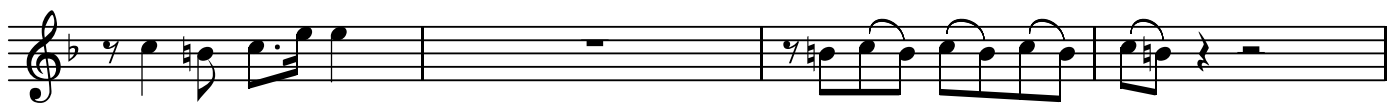
BK=5



BK=6



BK=7



BK=8



BK=9



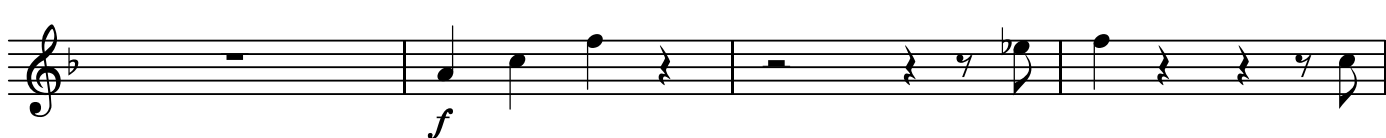
BK=10



BK=11



BK=12



BK=13



BK=14



BK=15



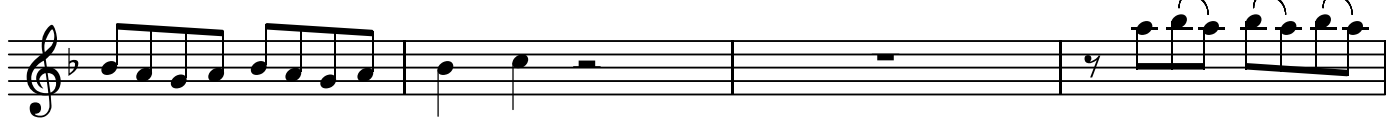
BK=16



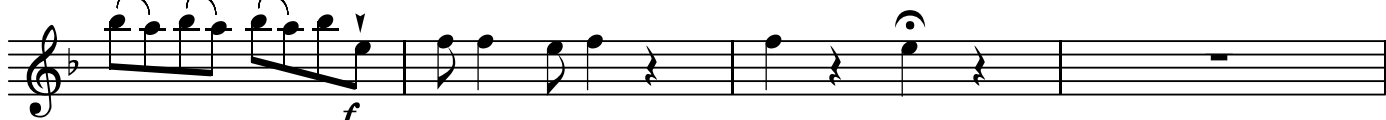
BK=17



BK=18

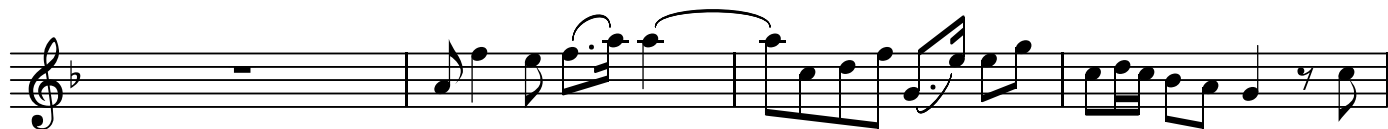


BK=19

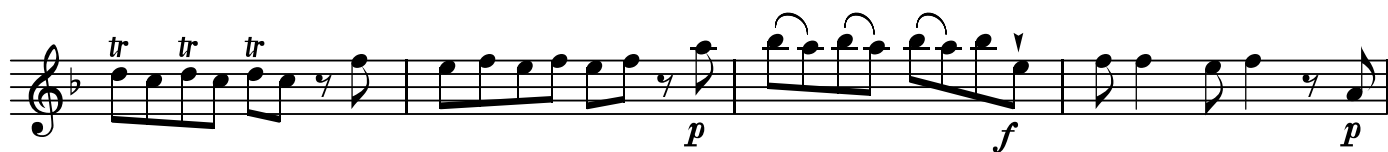




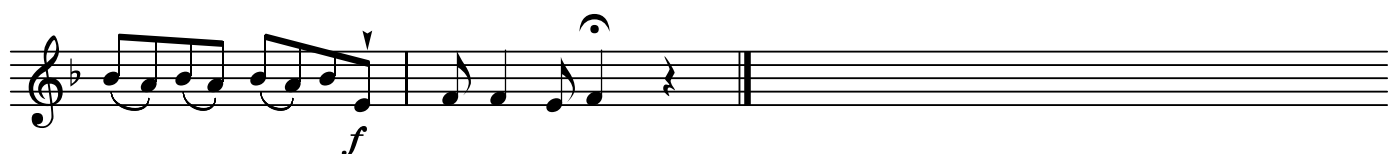
BK=20



BK=21



BK=22



「メサイア」より  
3. Arie

G.F.Handel

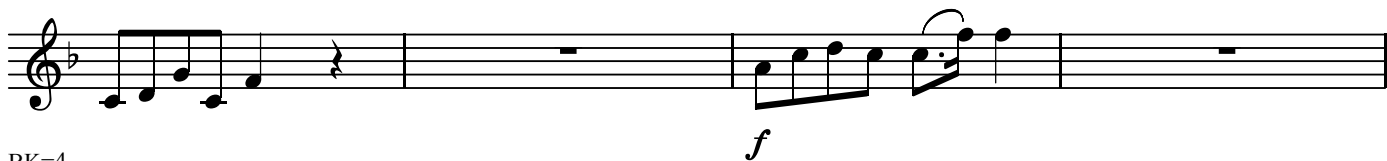
BK=1



T2  
BK=2



BK=3



BK=4



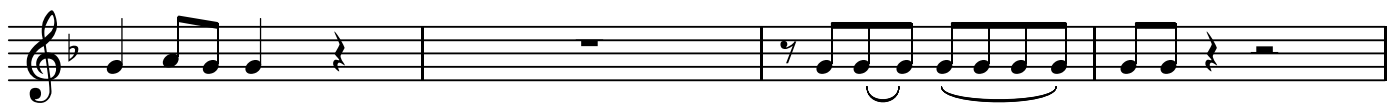
BK=5



BK=6



BK=7



BK=8



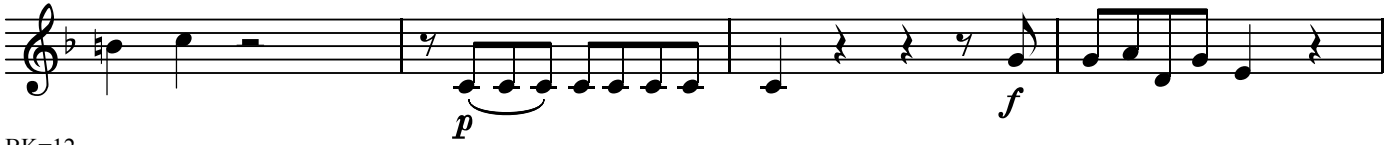
BK=9



BK=10



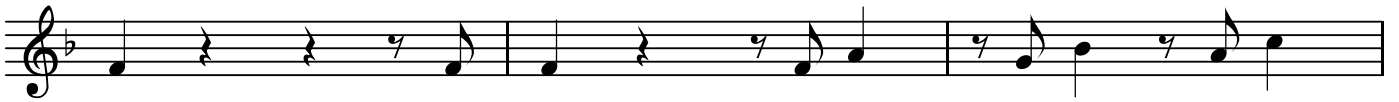
BK=11



BK=12



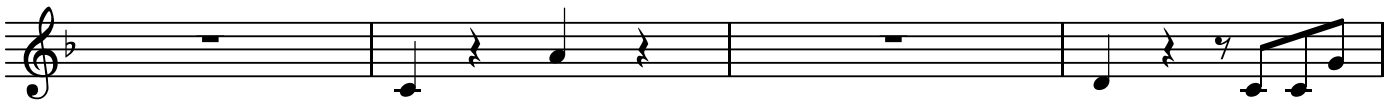
BK=13



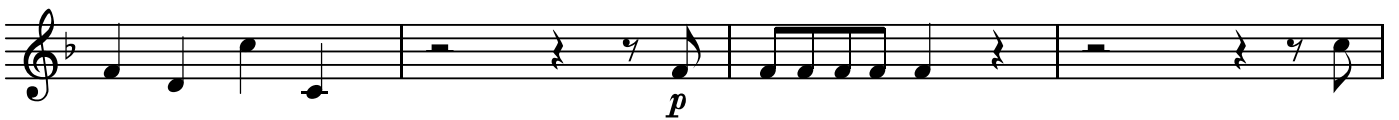
BK=14



BK=15



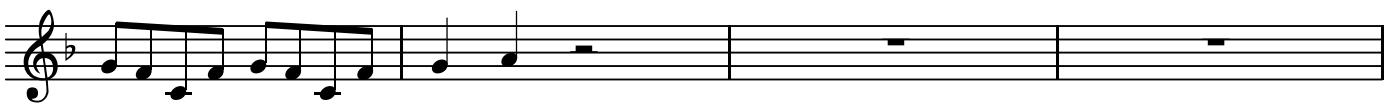
BK=16



BK=17



BK=18



BK=19



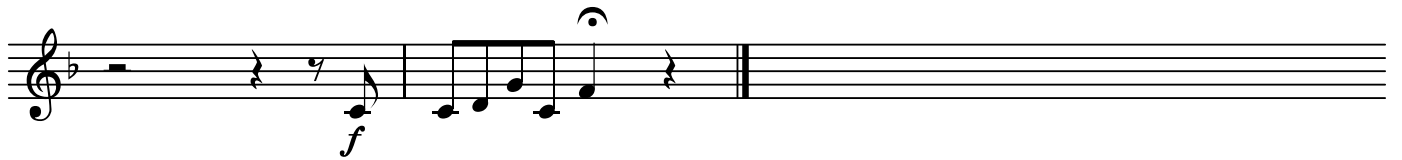
BK=20



BK=21



BK=22



GB

「メサイア」より  
3. Arie

G.F.Handel

BK=1



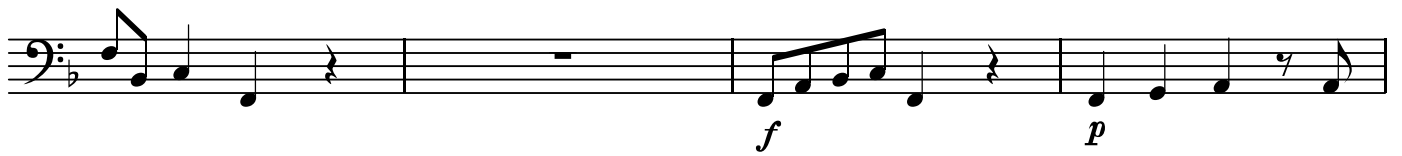
Musical notation for BK=1, featuring a bass clef, a key signature of one flat (B-flat), and a common time signature (C). The notation consists of a single staff with a series of eighth and sixteenth notes, starting with a G4 and moving upwards. A dynamic marking of *GB* is placed below the first measure.

BK=2



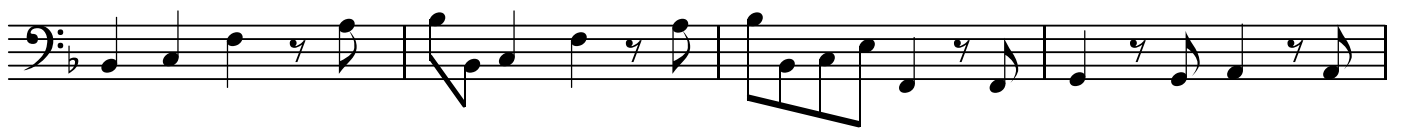
Musical notation for BK=2, featuring a bass clef, a key signature of one flat (B-flat), and a common time signature (C). The notation consists of a single staff with eighth and sixteenth notes, including rests. Dynamic markings of *f* are placed below the second and fourth measures.

BK=3



Musical notation for BK=3, featuring a bass clef, a key signature of one flat (B-flat), and a common time signature (C). The notation consists of a single staff with eighth and sixteenth notes, including rests. Dynamic markings of *f* and *p* are placed below the third and fourth measures.

BK=4



Musical notation for BK=4, featuring a bass clef, a key signature of one flat (B-flat), and a common time signature (C). The notation consists of a single staff with eighth and sixteenth notes, including rests.

BK=5



Musical notation for BK=5, featuring a bass clef, a key signature of one flat (B-flat), and a common time signature (C). The notation consists of a single staff with eighth and sixteenth notes, including rests.

BK=6



Musical notation for BK=6, featuring a bass clef, a key signature of one flat (B-flat), and a common time signature (C). The notation consists of a single staff with eighth and sixteenth notes, including rests.

BK=7



Musical notation for BK=7, featuring a bass clef, a key signature of one flat (B-flat), and a common time signature (C). The notation consists of a single staff with eighth and sixteenth notes, including rests.

BK=8



Musical notation for BK=8, featuring a bass clef, a key signature of one flat (B-flat), and a common time signature (C). The notation consists of a single staff with eighth and sixteenth notes, including rests.

BK=9

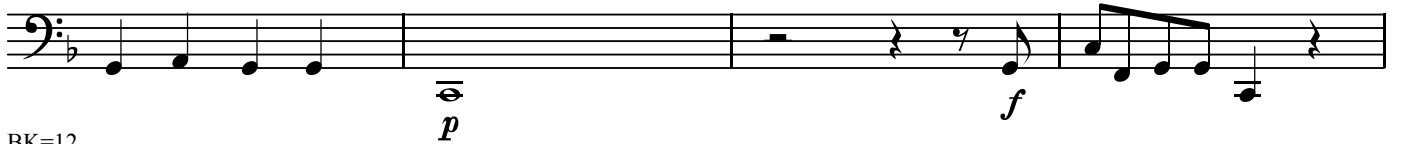


Musical notation for BK=9, featuring a bass clef, a key signature of one flat (B-flat), and a common time signature (C). The notation consists of a single staff with eighth and sixteenth notes, including rests.

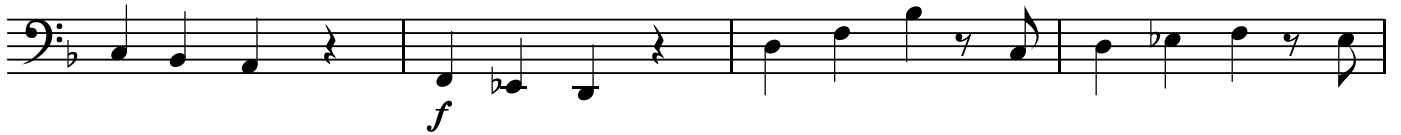
BK=10



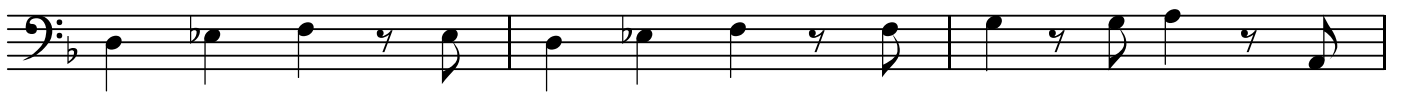
BK=11



BK=12



BK=13



BK=14



BK=15



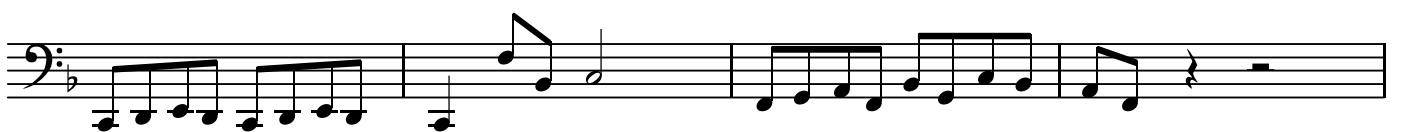
BK=16



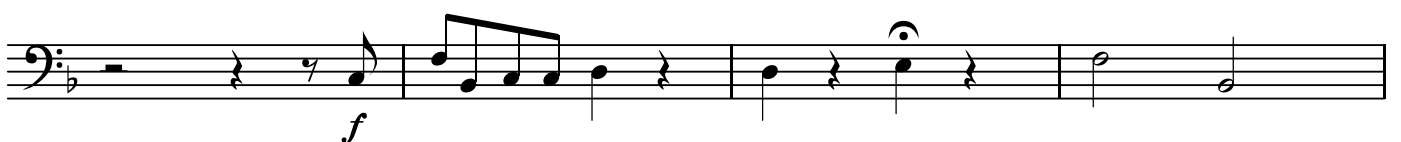
BK=17



BK=18



BK=19



BK=20



BK=21



BK=22

