

A1

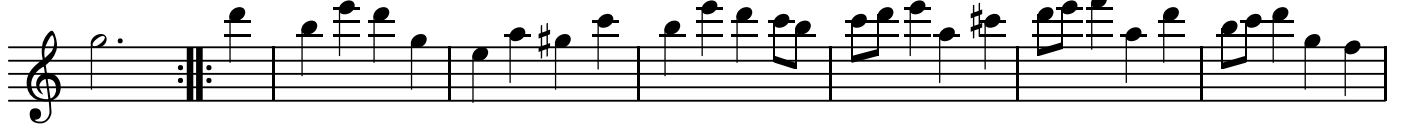
8. Bouree

BK=1

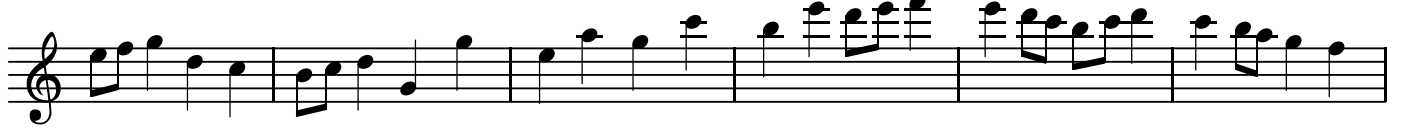


Al

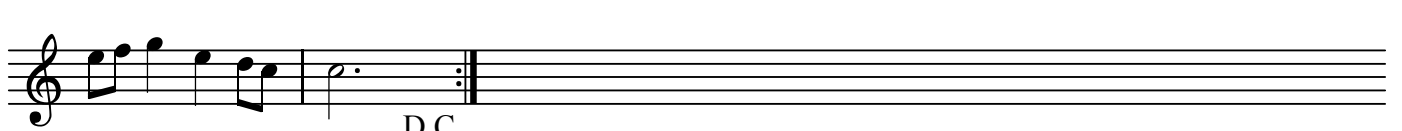
BK=2



BK=3



BK=4



D.C.

A2

8. Bouree

BK=1



Musical staff for BK=1, starting with a treble clef and a common time signature (C). The melody consists of a sequence of eighth and quarter notes.

BK=2



Musical staff for BK=2, starting with a treble clef and a common time signature (C). The melody includes a repeat sign and a sharp sign (#) on the eighth note of the second measure.

BK=3



Musical staff for BK=3, starting with a treble clef and a common time signature (C). The melody continues with eighth and quarter notes.

BK=4



Musical staff for BK=4, starting with a treble clef and a common time signature (C). The melody ends with a repeat sign and the instruction "D.C." below the staff.

T

8. Bouree

BK=1



BK=2



BK=3



BK=4



B

8. Bouree

BK=1



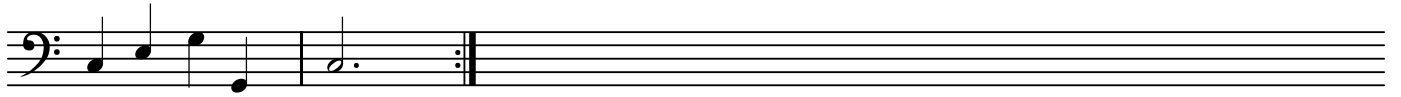
BK=2



BK=3



BK=4



D.C.