

S

4.Andante

BK=1



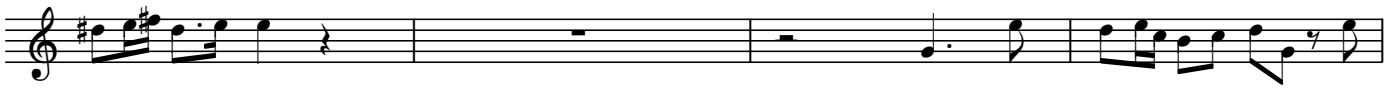
BK=2



BK=3



BK=4



BK=5



BK=6



BK=7



A1

4.Andante

BK=1



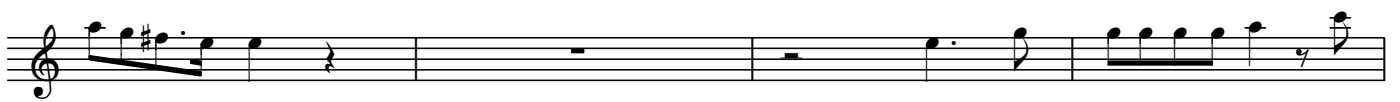
BK=2



BK=3



BK=4



BK=5



BK=6



BK=7



A2

4. Andante

BK=1

Musical staff for BK=1, featuring a treble clef, common time signature, and various rhythmic patterns including eighth and sixteenth notes, with trills marked 'tr'.

BK=2

Musical staff for BK=2, featuring a treble clef, common time signature, and various rhythmic patterns including eighth and sixteenth notes, with trills marked 'tr'.

BK=3

Musical staff for BK=3, featuring a treble clef, common time signature, and various rhythmic patterns including eighth and sixteenth notes, with trills marked 'tr'.

BK=4

Musical staff for BK=4, featuring a treble clef, common time signature, and various rhythmic patterns including eighth and sixteenth notes, with trills marked 'tr'.

BK=5

Musical staff for BK=5, featuring a treble clef, common time signature, and various rhythmic patterns including eighth and sixteenth notes, with trills marked 'tr'.

BK=6

Musical staff for BK=6, featuring a treble clef, common time signature, and various rhythmic patterns including eighth and sixteenth notes, with trills marked 'tr'.

BK=7

Musical staff for BK=7, featuring a treble clef, common time signature, and various rhythmic patterns including eighth and sixteenth notes, with trills marked 'tr'.

A3

4.Andante

BK=1



Musical staff for BK=1, featuring a treble clef, common time signature, and a melodic line with various note values and accidentals.

A3
BK=2



Musical staff for BK=2, featuring a treble clef, common time signature, and a melodic line with various note values and accidentals.

BK=3



Musical staff for BK=3, featuring a treble clef, common time signature, and a melodic line with various note values and accidentals.

BK=4



Musical staff for BK=4, featuring a treble clef, common time signature, and a melodic line with various note values and accidentals.

BK=5



Musical staff for BK=5, featuring a treble clef, common time signature, and a melodic line with various note values and accidentals.

BK=6



Musical staff for BK=6, featuring a treble clef, common time signature, and a melodic line with various note values and accidentals.

BK=7



Musical staff for BK=7, featuring a treble clef, common time signature, and a melodic line with various note values and accidentals, ending with a double bar line.

T

4.Andante

BK=1



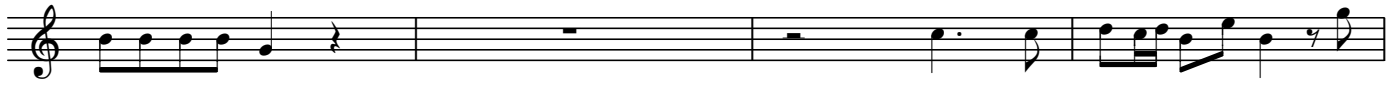
BK=2



BK=3



BK=4



BK=5



BK=6



BK=7



B

4.Andante

BK=1

First musical staff (BK=1) in bass clef, common time (C). It begins with a dynamic marking *B*. The melody consists of eighth and sixteenth notes, with some accidentals (sharps and naturals).

BK=2

Second musical staff (BK=2) in bass clef, common time. The melody continues with eighth and sixteenth notes, including some beamed sixteenth notes.

BK=3

Third musical staff (BK=3) in bass clef, common time. It features a measure with a whole rest followed by eighth notes, and includes a sharp sign in the key signature.

BK=4

Fourth musical staff (BK=4) in bass clef, common time. The melody continues with eighth notes and rests.

BK=5

Fifth musical staff (BK=5) in bass clef, common time. It includes a dotted quarter note and eighth notes.

BK=6

Sixth musical staff (BK=6) in bass clef, common time. It features a measure with a whole rest followed by eighth notes, and includes a sharp sign in the key signature.

BK=7

Seventh musical staff (BK=7) in bass clef, common time. It concludes the piece with a double bar line and a final whole note.