

S1

# 19. Coro

BK=1

Musical staff for BK=1, 3/4 time signature. The staff contains a melodic line with eighth and sixteenth notes, including a trill (tr) in the final measure. The dynamic marking *sl* is present below the staff.

BK=2

Musical staff for BK=2, 3/4 time signature. The staff contains a melodic line with eighth and sixteenth notes, including a repeat sign (double bar line with dots) in the second measure. The dynamic marking *sl* is present below the staff.

BK=3

Musical staff for BK=3, 3/4 time signature. The staff contains a melodic line with eighth and sixteenth notes, including a trill (tr) in the first measure. The dynamic marking *sl* is present below the staff.

BK=4

Musical staff for BK=4, 3/4 time signature. The staff contains a melodic line with eighth and sixteenth notes, including a repeat sign (double bar line with dots) in the final measure. The dynamic markings *p* and *f* are present below the staff.





T1

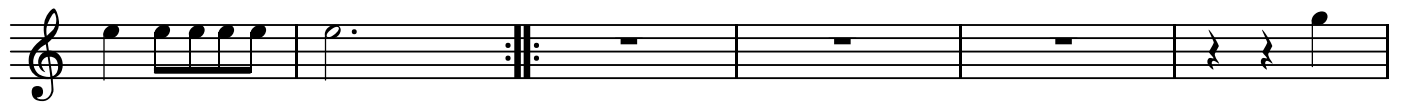
# 19. Coro

BK=1



Musical staff for BK=1, featuring a treble clef and a 3/4 time signature. The staff contains a sequence of notes with various articulations, including slurs and a trill (tr) in the final measure.

BK=2



Musical staff for BK=2, featuring a treble clef. The staff contains a sequence of notes, including a repeat sign (double bar line with dots) and a trill (tr) in the final measure.

BK=3



Musical staff for BK=3, featuring a treble clef. The staff contains a sequence of notes with various articulations, including slurs and a trill (tr) in the final measure.

BK=4



Musical staff for BK=4, featuring a treble clef. The staff contains a sequence of notes with dynamic markings *p* (piano) and *f* (forte), and a repeat sign (double bar line with dots) at the end.



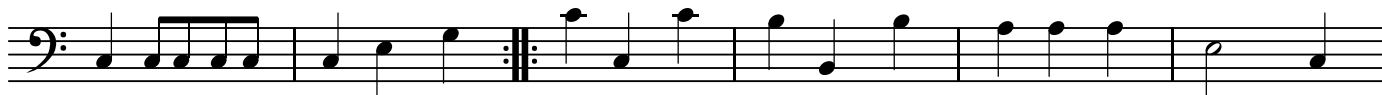
B

# 19. Coro

BK=1



BK=2



BK=3



BK=4

