

S

17. Menuetto

BK=1



Musical staff for BK=1, starting with a treble clef, a key signature of two flats (B-flat and E-flat), and a 3/4 time signature. The melody begins with a quarter note G4, followed by eighth notes A4, B4, and C5. It continues with a quarter note D5, a half note E5, and a quarter note F5. The piece concludes with a quarter note G5, a half note F5, and a quarter note E5.

S
BK=2



Musical staff for BK=2, continuing the melody from BK=1. It features a quarter note D5, a half note E5, and a quarter note F5. A repeat sign follows, leading to a quarter note G5, a half note F5, and a quarter note E5. The piece concludes with a quarter note D5, a half note C5, and a quarter note B4.

BK=3



Musical staff for BK=3, featuring trills. It starts with a quarter note G4, followed by eighth notes A4, B4, and C5. It continues with a quarter note D5, a half note E5, and a quarter note F5. The piece concludes with a quarter note G5, a half note F5, and a quarter note E5. The word "Fine" is written at the end of the staff.

BK=4



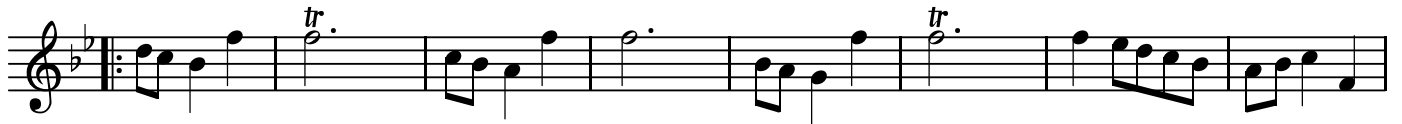
Musical staff for BK=4, continuing the melody. It starts with a quarter note G4, followed by eighth notes A4, B4, and C5. It continues with a quarter note D5, a half note E5, and a quarter note F5. The piece concludes with a quarter note G5, a half note F5, and a quarter note E5.

BK=5



Musical staff for BK=5, featuring a trill and first/second endings. It starts with a quarter note G4, followed by eighth notes A4, B4, and C5. It continues with a quarter note D5, a half note E5, and a quarter note F5. The piece concludes with a quarter note G5, a half note F5, and a quarter note E5. The word "Fine" is written at the end of the staff.

BK=6



Musical staff for BK=6, featuring trills. It starts with a quarter note G4, followed by eighth notes A4, B4, and C5. It continues with a quarter note D5, a half note E5, and a quarter note F5. The piece concludes with a quarter note G5, a half note F5, and a quarter note E5.

BK=7



Musical staff for BK=7, concluding the piece. It starts with a quarter note G4, followed by eighth notes A4, B4, and C5. It continues with a quarter note D5, a half note E5, and a quarter note F5. The piece concludes with a quarter note G5, a half note F5, and a quarter note E5. The word "D.C." is written at the end of the staff.

A

17. Menuetto

BK=1



BK=2



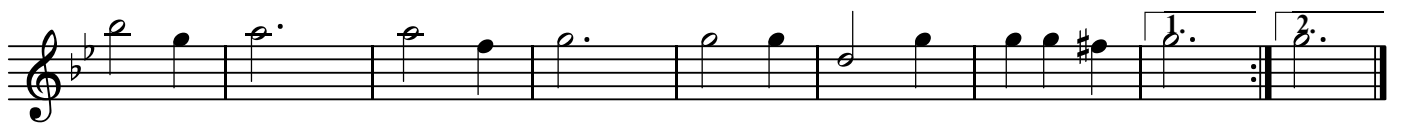
BK=3



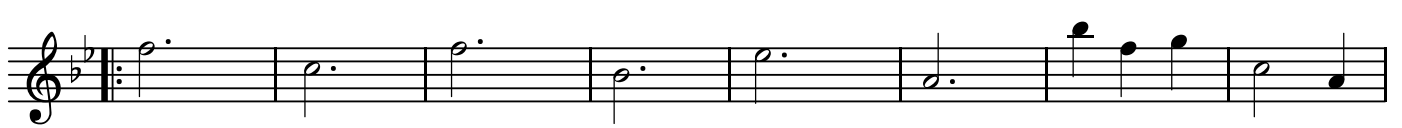
BK=4



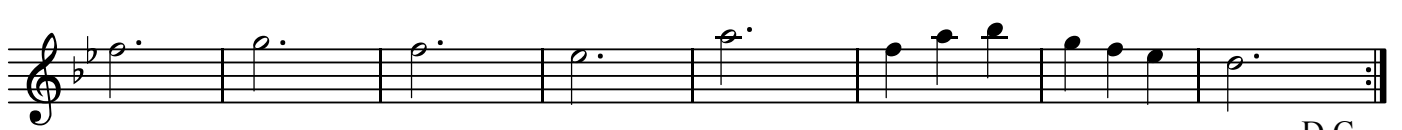
BK=5



BK=6



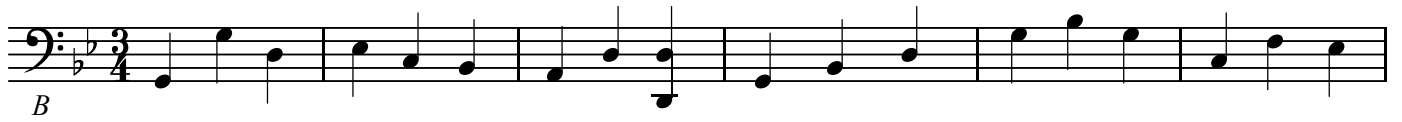
BK=7



B

17. Menuetto

BK=1



Musical staff for BK=1, starting with a bass clef, a key signature of two flats (B-flat and E-flat), and a 3/4 time signature. The staff contains a sequence of eighth and quarter notes. A dynamic marking 'B' is placed below the first few notes.

BK=2



Musical staff for BK=2, continuing the sequence of notes. It features a repeat sign (double bar line with two dots) after the first few notes.

BK=3



Musical staff for BK=3, continuing the sequence of notes. The staff ends with a repeat sign and the word 'Fine' written below the final note.

BK=4



Musical staff for BK=4, continuing the sequence of notes. This staff includes several beamed eighth notes.

BK=5



Musical staff for BK=5, continuing the sequence of notes. It features first and second endings, indicated by '1.' and '2.' above the final two measures.

BK=6



Musical staff for BK=6, continuing the sequence of notes. It begins with a repeat sign.

BK=7



Musical staff for BK=7, continuing the sequence of notes. The staff ends with a repeat sign and the word 'D.C.' (Da Capo) written below the final note.