

S1

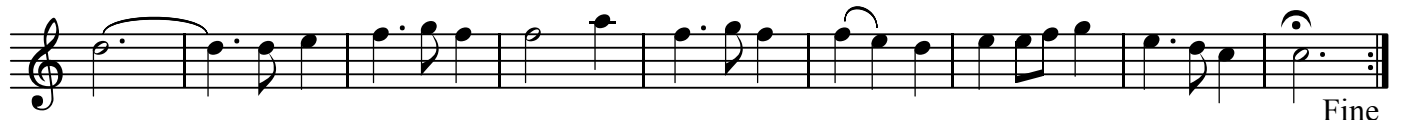
# 15.Lentment

BK=1



*S1*

BK=2



Fine

BK=3



BK=4



D.C.

S2

# 15.Lentment

BK=1



S2  
BK=2



BK=3



BK=4



A

# 15.Lentment

BK=1

Musical staff for BK=1, treble clef, 3/4 time signature. The melody begins with a quarter rest followed by an eighth rest and an eighth note, then continues with a series of quarter and eighth notes, including a dotted quarter note. An *A* dynamic marking is present at the start.

BK=2

Musical staff for BK=2, treble clef. The melody continues with quarter and eighth notes, some with slurs and phrasing marks. It concludes with a double bar line and the word *Fine*.

BK=3

Musical staff for BK=3, treble clef. It begins with a whole rest, followed by a quarter rest, an eighth rest, and an eighth note, then continues with quarter and eighth notes.

BK=4

Musical staff for BK=4, treble clef. The melody consists of a series of quarter notes, some with slurs, followed by eighth notes and a dotted quarter note. It ends with a double bar line and the marking *D.C.*

T1

# 15.Lentment

BK=1



Musical staff for BK=1, starting with a treble clef and a 3/4 time signature. The staff contains a melodic line with various note values, including quarter notes, eighth notes, and a half note, with some notes beamed together. There are rests at the beginning of the staff.

BK=2



Musical staff for BK=2, continuing the melodic line from BK=1. It ends with a double bar line and the word "Fine" written below the staff.

BK=3



Musical staff for BK=3, consisting of a single treble clef and a series of rests across the staff.

BK=4



Musical staff for BK=4, consisting of a single treble clef and a series of rests across the staff, ending with a double bar line and the text "D.C." below the staff.

T2

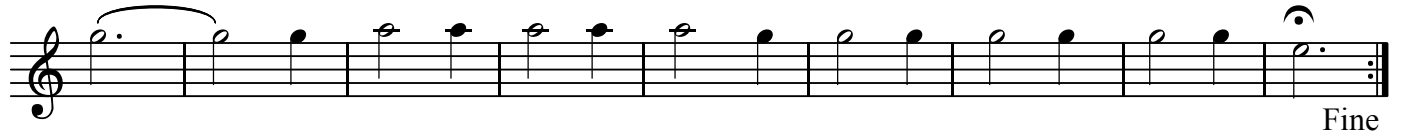
# 15.Lentment

BK=1



Musical staff for BK=1, featuring a treble clef and a 3/4 time signature. The staff contains a melodic line with a series of eighth and quarter notes, including a triplet of eighth notes. A fermata is placed over the final note of the staff.

BK=2



Musical staff for BK=2, featuring a treble clef. The staff contains a melodic line with a series of quarter notes, all of which are beamed together. A fermata is placed over the final note of the staff. The word "Fine" is written at the end of the staff.

BK=3



Musical staff for BK=3, featuring a treble clef. The staff contains a series of whole rests, indicating a section of silence.

BK=4



Musical staff for BK=4, featuring a treble clef. The staff contains a series of whole rests, indicating a section of silence. The text "D.C." is written at the end of the staff.

B

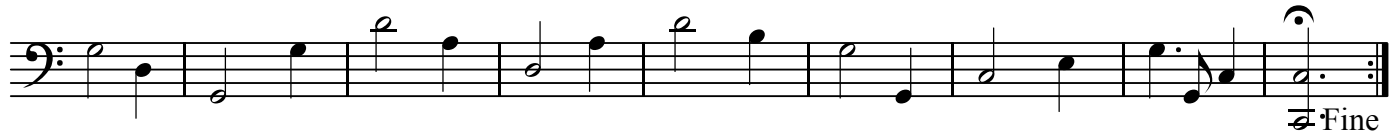
# 15.Lentment

BK=1



Musical notation for BK=1, starting with a bass clef and a 3/4 time signature. The piece begins with a dynamic marking of *B* (Basso). The melody consists of a series of eighth and quarter notes, with some notes marked with a *p* (piano) dynamic.

BK=2



Musical notation for BK=2, continuing the melody from BK=1. It features a series of quarter and eighth notes, with several notes marked with a *p* dynamic. The piece concludes with a double bar line and the word *Fine*.

BK=3



Musical notation for BK=3, starting with a rest for two measures followed by a 3/4 time signature. The melody continues with quarter and eighth notes.

BK=4



Musical notation for BK=4, continuing the melody. It includes a key signature change to one sharp (F#) and a dynamic marking of *p*. The piece ends with a double bar line and the instruction *D.C.* (Da Capo).