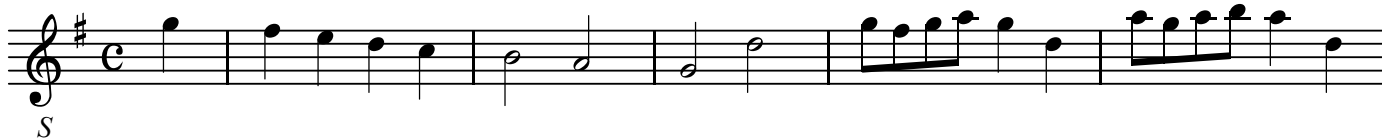


S

# 14.Aria

BK=1



Musical staff for BK=1, starting with a treble clef, a key signature of one sharp (F#), and a common time signature (C). The staff contains a sequence of notes: quarter notes G4, A4, B4, C5, followed by a half note G4, and then eighth notes G4, A4, B4, C5, D5, E5, F#5, G5, A5, B5, C6.

*S*

BK=2



Musical staff for BK=2, continuing the melody from BK=1. It begins with eighth notes G4, A4, B4, C5, D5, E5, F#5, G5, A5, B5, C6, followed by quarter notes G4, A4, B4, C5, D5, E5, F#5, G5, A5, B5, C6.

BK=3



Musical staff for BK=3, continuing the melody. It features quarter notes G4, A4, B4, C5, D5, E5, F#5, G5, A5, B5, C6, followed by a repeat sign and then quarter notes G4, A4, B4, C5, D5, E5, F#5, G5, A5, B5, C6.

BK=4



Musical staff for BK=4, continuing the melody. It features quarter notes G4, A4, B4, C5, D5, E5, F#5, G5, A5, B5, C6, followed by eighth notes G4, A4, B4, C5, D5, E5, F#5, G5, A5, B5, C6, and then quarter notes G4, A4, B4, C5, D5, E5, F#5, G5, A5, B5, C6.

BK=5



Musical staff for BK=5, continuing the melody. It features eighth notes G4, A4, B4, C5, D5, E5, F#5, G5, A5, B5, C6, followed by quarter notes G4, A4, B4, C5, D5, E5, F#5, G5, A5, B5, C6.

BK=6



Musical staff for BK=6, continuing the melody. It features eighth notes G4, A4, B4, C5, D5, E5, F#5, G5, A5, B5, C6, followed by quarter notes G4, A4, B4, C5, D5, E5, F#5, G5, A5, B5, C6, and ends with a fermata over a quarter note G4. The staff concludes with a double bar line and a key signature change to one flat (Bb).

Fine

BK=7



Musical staff for BK=7, continuing the melody in the new key signature of one flat (Bb). It features quarter notes G4, A4, B4, C5, D5, E5, F#5, G5, A5, B5, C6, followed by eighth notes G4, A4, B4, C5, D5, E5, F#5, G5, A5, B5, C6, and then quarter notes G4, A4, B4, C5, D5, E5, F#5, G5, A5, B5, C6. Trills (tr) are indicated above the eighth notes G4 and C6.

BK=8



Musical staff for BK=8, continuing the melody. It features eighth notes G4, A4, B4, C5, D5, E5, F#5, G5, A5, B5, C6, followed by quarter notes G4, A4, B4, C5, D5, E5, F#5, G5, A5, B5, C6, and then quarter notes G4, A4, B4, C5, D5, E5, F#5, G5, A5, B5, C6.

BK=9



Musical staff for BK=9, continuing the melody. It features quarter notes G4, A4, B4, C5, D5, E5, F#5, G5, A5, B5, C6, followed by eighth notes G4, A4, B4, C5, D5, E5, F#5, G5, A5, B5, C6, and then quarter notes G4, A4, B4, C5, D5, E5, F#5, G5, A5, B5, C6.

BK=10



Musical staff for BK=10, continuing the melody. It features quarter notes G4, A4, B4, C5, D5, E5, F#5, G5, A5, B5, C6, followed by eighth notes G4, A4, B4, C5, D5, E5, F#5, G5, A5, B5, C6, and then quarter notes G4, A4, B4, C5, D5, E5, F#5, G5, A5, B5, C6. The staff concludes with a double bar line.

D.C.

A1

# 14.Aria

BK=1



*Al*  
BK=2



BK=3



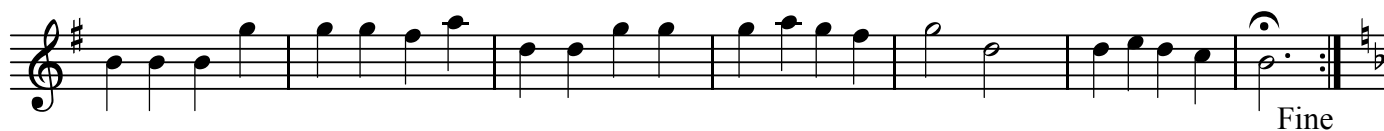
BK=4



BK=5



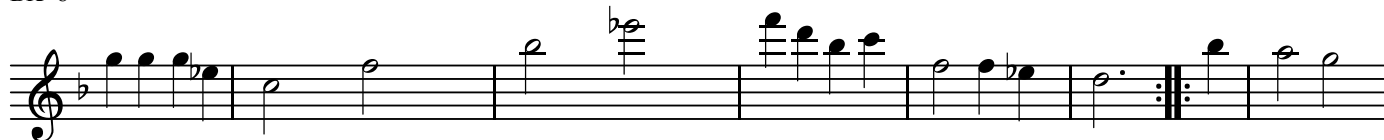
BK=6



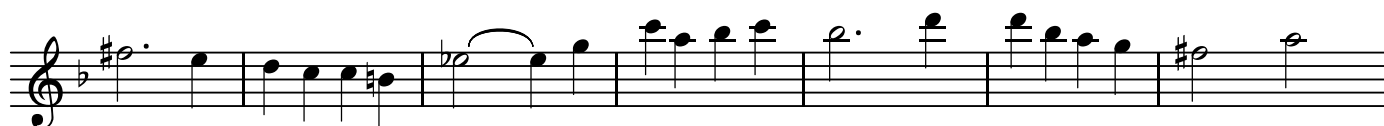
BK=7



BK=8



BK=9



BK=10



D.C.

14.Aria

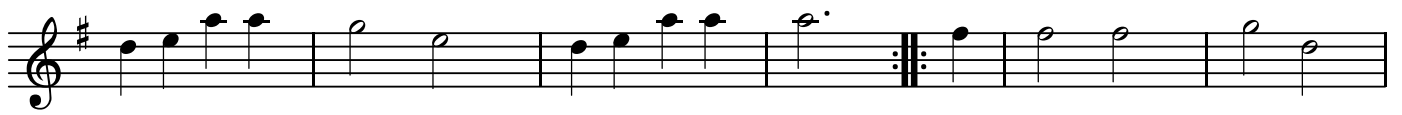
BK=1



BK=2



BK=3



BK=4



BK=5



BK=6



BK=7



BK=8



BK=9



BK=10



B

14.Aria

BK=1



First musical staff (BK=1) in bass clef with a sharp key signature and common time. The notation begins with a dynamic marking *B* (Basso). The melody consists of eighth and quarter notes, followed by a repeat sign at the end of the line.

BK=2



Second musical staff (BK=2) continuing the melody from BK=1. It ends with a sharp sign on the final note.

BK=3



Third musical staff (BK=3) featuring a repeat sign and a first ending bracket. The melody includes a sharp sign on the second measure.

BK=4



Fourth musical staff (BK=4) continuing the melodic line with eighth and quarter notes.

BK=5



Fifth musical staff (BK=5) continuing the melody.

BK=6



Sixth musical staff (BK=6) featuring a fermata over the final note. The staff concludes with the instruction *Fine*.

BK=7



Seventh musical staff (BK=7) in a different key signature (one flat). It begins with a fermata and includes eighth-note runs.

BK=8



Eighth musical staff (BK=8) in the same key signature as BK=7, featuring a repeat sign.

BK=9



Ninth musical staff (BK=9) continuing the melody with various accidentals (sharps and flats).

BK=10



Tenth musical staff (BK=10) featuring a fermata and a sharp sign. The staff concludes with the instruction *D.C.* (Da Capo).