

S1

12.Hornpipe

BK=1



Musical staff for BK=1, starting with a treble clef and a 3/2 time signature. The melody begins with a half note G4, followed by a dotted half note G4 with a trill (tr) above it. The staff continues with eighth and quarter notes, ending with a quarter rest.

S1

BK=2



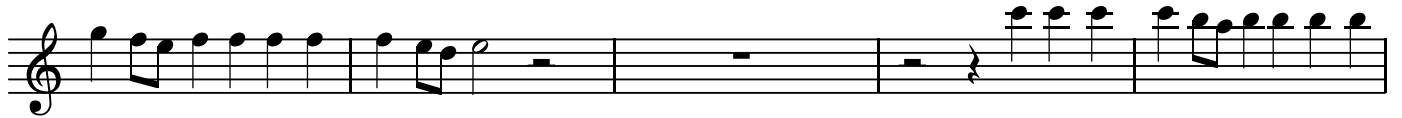
Musical staff for BK=2, starting with a treble clef. The melody begins with a quarter rest, followed by eighth notes. It features a dotted half note with a trill (tr) above it, and ends with a quarter rest.

BK=3



Musical staff for BK=3, starting with a treble clef. The staff begins with two measures of whole rests, followed by a melody of eighth and quarter notes, ending with a quarter rest.

BK=4



Musical staff for BK=4, starting with a treble clef. The melody consists of eighth notes, followed by a quarter rest, and ends with a series of eighth notes.

BK=5



Musical staff for BK=5, starting with a treble clef. The melody features a series of eighth notes, a dotted half note with a slur above it, and continues with eighth and quarter notes.

BK=6



Musical staff for BK=6, starting with a treble clef. The melody consists of eighth notes, followed by a quarter rest, and continues with eighth and quarter notes.

BK=7



Musical staff for BK=7, starting with a treble clef. The melody consists of eighth notes, followed by a quarter rest, and continues with eighth and quarter notes, ending with a double bar line and repeat dots.

Fine

BK=8



Musical staff for BK=8, starting with a treble clef. The melody consists of eighth notes, followed by a quarter rest, and continues with eighth and quarter notes, ending with a sharp sign (#).

BK=9



Musical staff for BK=9, starting with a treble clef. The melody consists of eighth notes, followed by a quarter rest, and continues with eighth and quarter notes, ending with a sharp sign (#).

BK=10



BK=11



BK=12



BK=13



BK=14



BK=15



S2

12.Hornpipe

BK=1



S2
BK=2



BK=3



BK=4



BK=5



BK=6



BK=7



Fine

BK=8



BK=9



BK=10



BK=11



BK=12



BK=13



BK=14



BK=15



BK=10



BK=11



BK=12



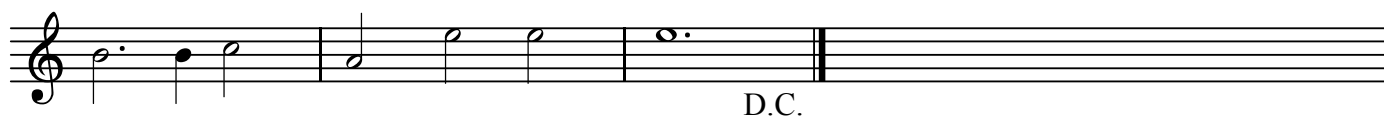
BK=13



BK=14



BK=15



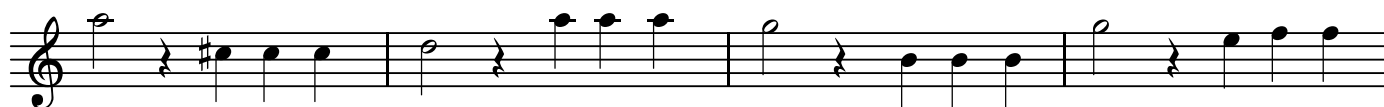
BK=10



BK=11



BK=12



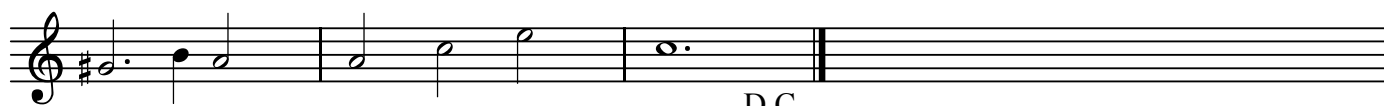
BK=13



BK=14



BK=15

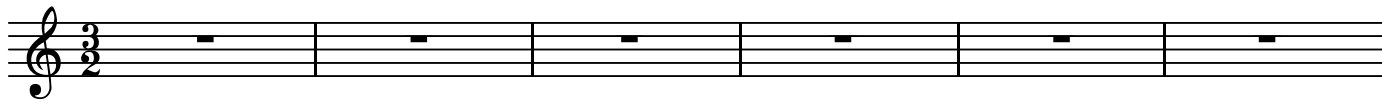


D.C.

T2

12.Hornpipe

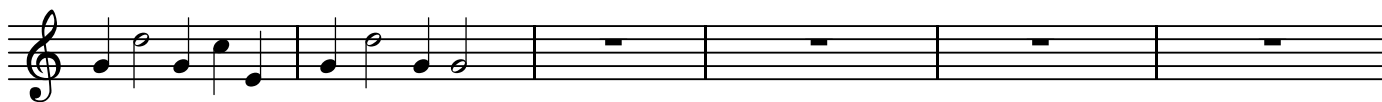
BK=1



T2
BK=2



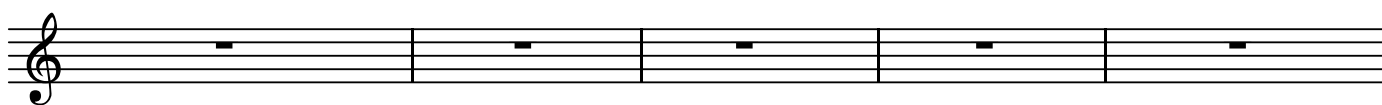
BK=3



BK=4



BK=5



BK=6



BK=7

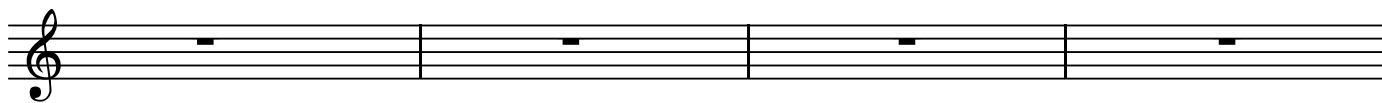


Fine

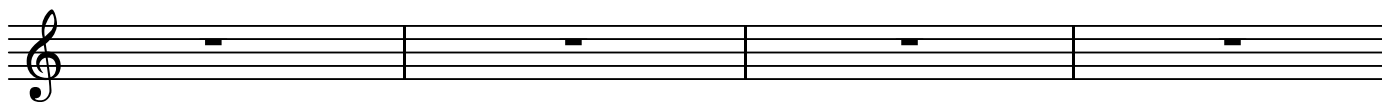
BK=8



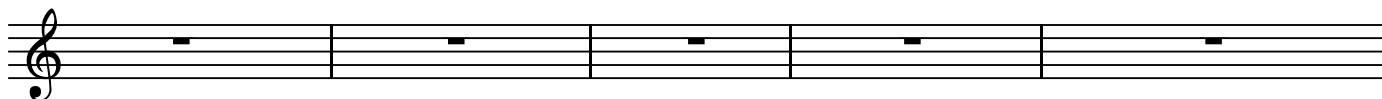
BK=9



BK=10



BK=11



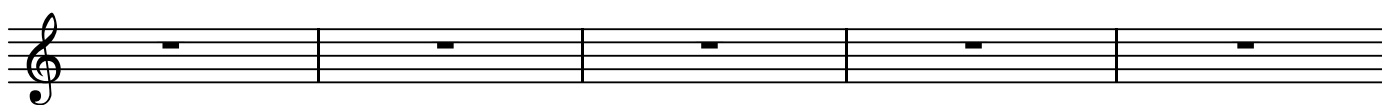
BK=12



BK=13



BK=14



BK=15



D.C.

B

12.Hornpipe

BK=1



Musical staff for BK=1, starting with a bass clef, a 3/2 time signature, and a dynamic marking of *B*. The staff contains a sequence of eighth and quarter notes.

BK=2



Musical staff for BK=2, continuing the melody with a slur over the final two notes.

BK=3



Musical staff for BK=3, consisting of five measures of whole rests.

BK=4



Musical staff for BK=4, continuing the melody with eighth and quarter notes.

BK=5



Musical staff for BK=5, continuing the melody with eighth and quarter notes.

BK=6



Musical staff for BK=6, consisting of three measures of whole rests followed by a melodic phrase.

BK=7



Musical staff for BK=7, continuing the melody with eighth and quarter notes, ending with a double bar line and repeat dots. The word "Fine" is written below the staff.

BK=8



Musical staff for BK=8, continuing the melody with eighth and quarter notes.

BK=9



Musical staff for BK=9, continuing the melody with eighth and quarter notes.

