

3.La Paix

BK=1

Musical staff for BK=1, featuring a treble clef, a 12/8 time signature, and a dynamic marking of *sf*. The staff contains three measures of music with eighth and sixteenth notes, some beamed together, and a fermata over the final note of the first measure.

BK=2

Musical staff for BK=2, featuring a treble clef and a 12/8 time signature. The staff contains three measures of music with eighth and sixteenth notes, some beamed together, and a fermata over the final note of the first measure.

BK=3

Musical staff for BK=3, featuring a treble clef and a 12/8 time signature. The staff contains three measures of music with eighth and sixteenth notes, some beamed together, and trills marked with *tr*. A repeat sign is present at the end of the second measure.

BK=4

Musical staff for BK=4, featuring a treble clef and a 12/8 time signature. The staff contains three measures of music with eighth and sixteenth notes, some beamed together, and a fermata over the final note of the first measure.

BK=5

Musical staff for BK=5, featuring a treble clef and a 12/8 time signature. The staff contains three measures of music with eighth and sixteenth notes, some beamed together, and a fermata over the final note of the first measure.

BK=6

Musical staff for BK=6, featuring a treble clef and a 12/8 time signature. The staff contains three measures of music with eighth and sixteenth notes, some beamed together, and a fermata over the final note of the first measure.

BK=1



S2  
BK=2



BK=3



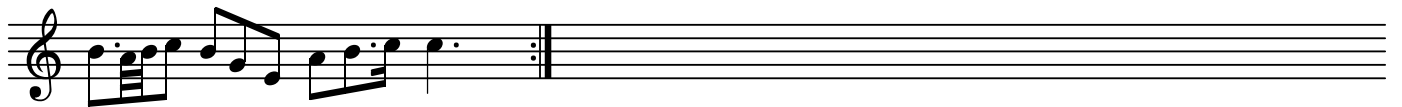
BK=4



BK=5



BK=6



T1


3.La Paix

BK=1



Musical staff for BK=1, featuring a treble clef, a 12/8 time signature, and a melodic line with eighth and sixteenth notes. A trill (tr) is indicated above the first measure.

BK=2



Musical staff for BK=2, featuring a treble clef and a melodic line with eighth notes and slurs.

BK=3



Musical staff for BK=3, featuring a treble clef, a melodic line with eighth notes, and trills (tr) above the first and second measures. A repeat sign is present at the end of the staff.

BK=4



Musical staff for BK=4, featuring a treble clef and a melodic line with eighth notes and slurs.

BK=5



Musical staff for BK=5, featuring a treble clef and a melodic line with eighth notes and slurs.

BK=6



Musical staff for BK=6, featuring a treble clef, a melodic line with eighth notes, and a repeat sign at the end of the staff.

T2

3.La Paix

BK=1



*T2*  
BK=2



BK=3



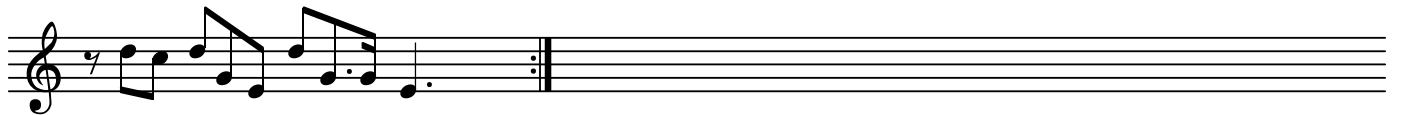
BK=4



BK=5



BK=6



B

3.La Paix

BK=1



Musical notation for BK=1, featuring a bass clef, a 12/8 time signature, and a dynamic marking of *B*. The notation consists of a single staff with a series of eighth and sixteenth notes, some beamed together, and a few dotted notes.

BK=2



Musical notation for BK=2, featuring a bass clef. The notation includes a complex rhythmic pattern with many beamed sixteenth notes, followed by a few dotted notes.

BK=3



Musical notation for BK=3, featuring a bass clef. The notation consists of a series of eighth and sixteenth notes, with a repeat sign (double bar line with two dots) in the middle.

BK=4



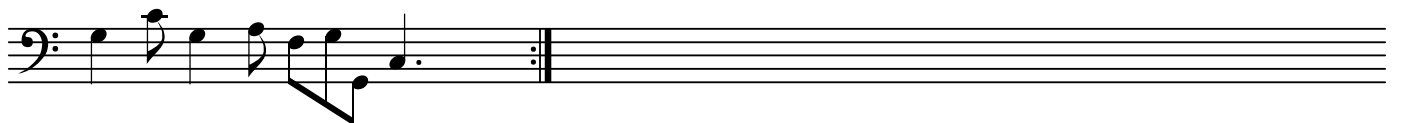
Musical notation for BK=4, featuring a bass clef. The notation includes a series of eighth and sixteenth notes, with a flat symbol (*b*) under a note in the first measure.

BK=5



Musical notation for BK=5, featuring a bass clef. The notation includes a series of eighth and sixteenth notes, with trill markings (*tr*) above two of the notes in the final measure.

BK=6



Musical notation for BK=6, featuring a bass clef. The notation consists of a series of eighth and sixteenth notes, ending with a repeat sign (double bar line with two dots).